

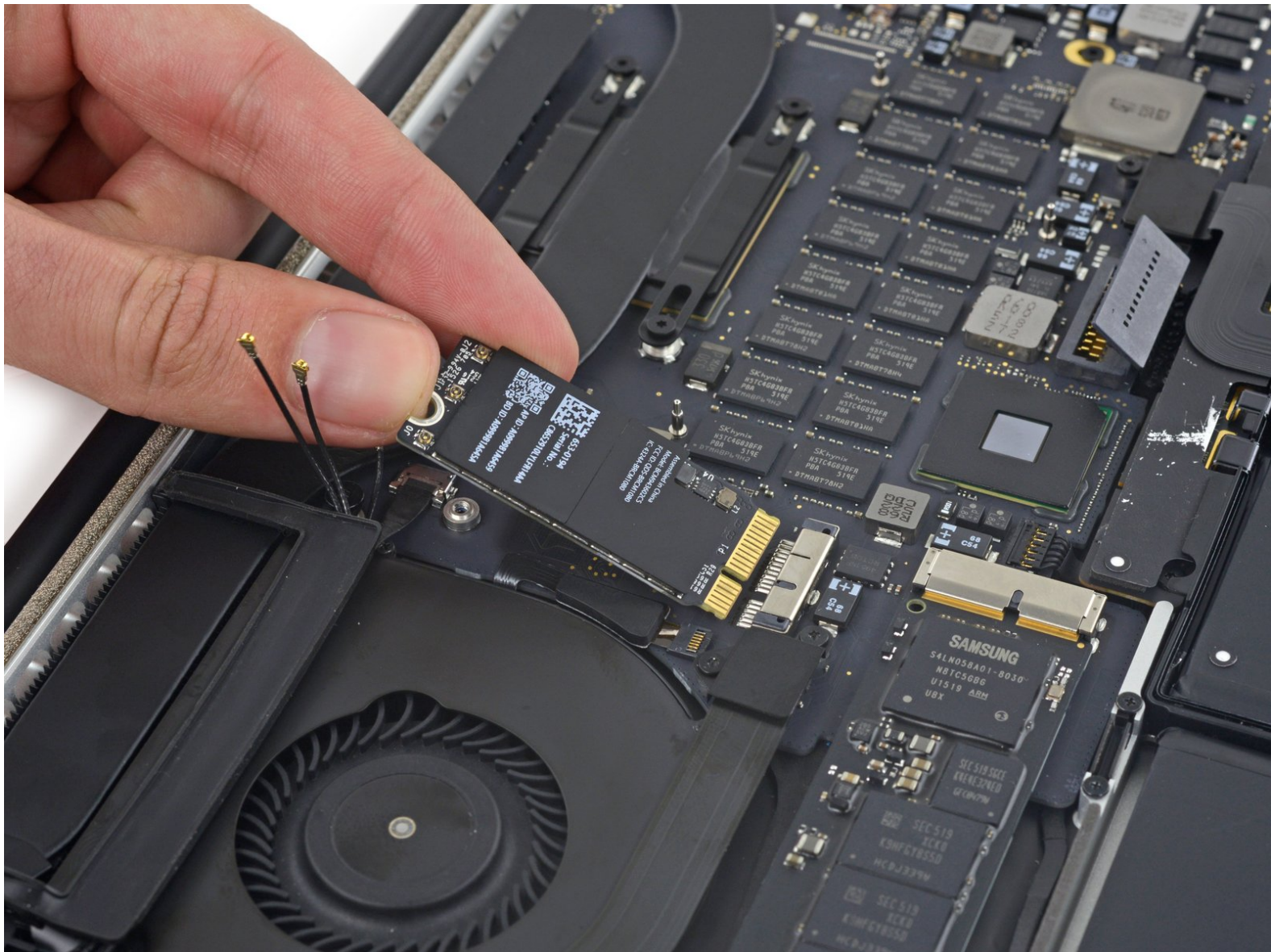


MacBook Pro 15" Retina Display Mid 2015

AirPort Board Replacement

Replace the AirPort Board in your MacBook Pro 15" Retina Display Mid 2015.

Written By: Andrew Optimus Goldheart



INTRODUCTION

Having wireless (Wi-Fi or Bluetooth) connectivity issues? Use this guide to replace the AirPort board.



TOOLS:

- [T5 Torx Screwdriver](#) (1)
- [Spudger](#) (1)
- [P5 Pentalobe Screwdriver Retina MacBook Pro and Air](#) (1)



PARTS:

- [MacBook Pro 13" Retina \(Early 2015\) Airport/Bluetooth Board](#) (1)

Step 1 — Lower Case



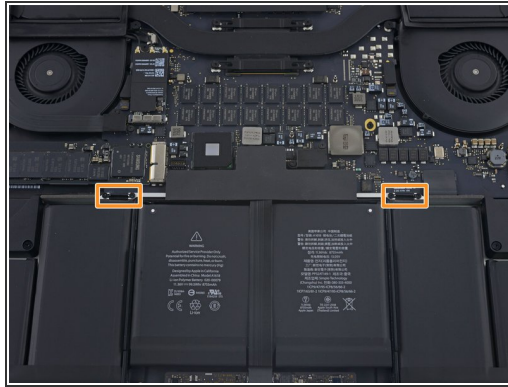
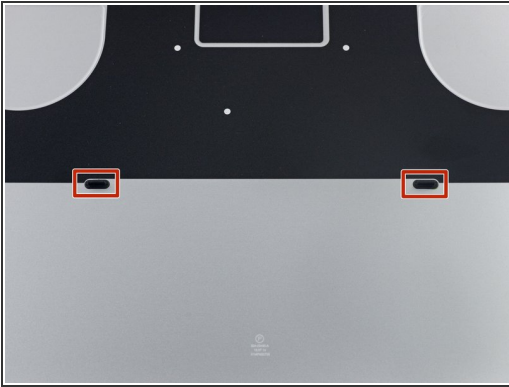
- Remove the following P5 pentalobe screws securing the lower case to the MacBook Pro:
 - Eight 3.1 mm
 - Two 2.3 mm



Step 2



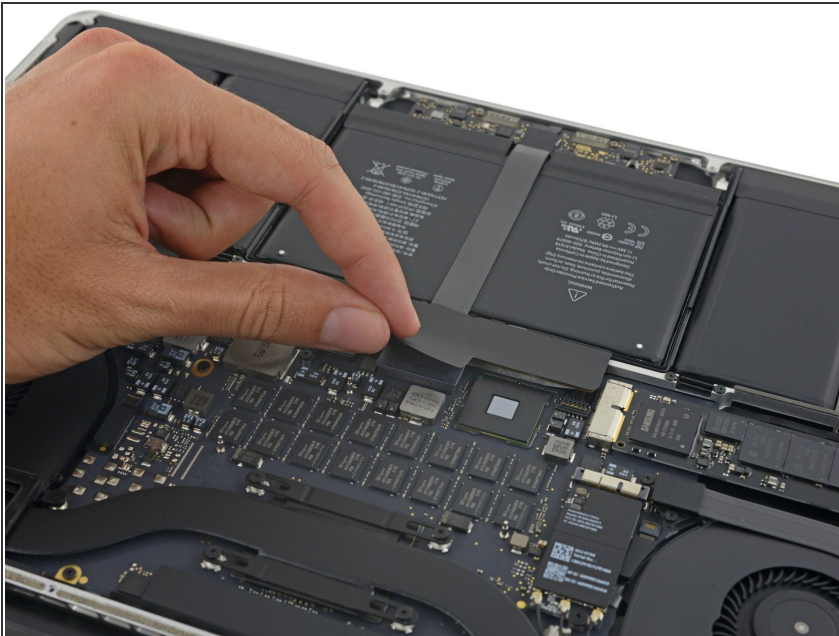
- Lifting from the edge nearest the clutch cover, lift the lower case off the MacBook Pro.

Step 3



-  The lower case has two plastic pegs (red) that fit into plastic clips in the upper case (orange).
-  During reassembly, gently push down the center of the lower case to reattach the case to its two plastic clips.

Step 4 — Battery Connector



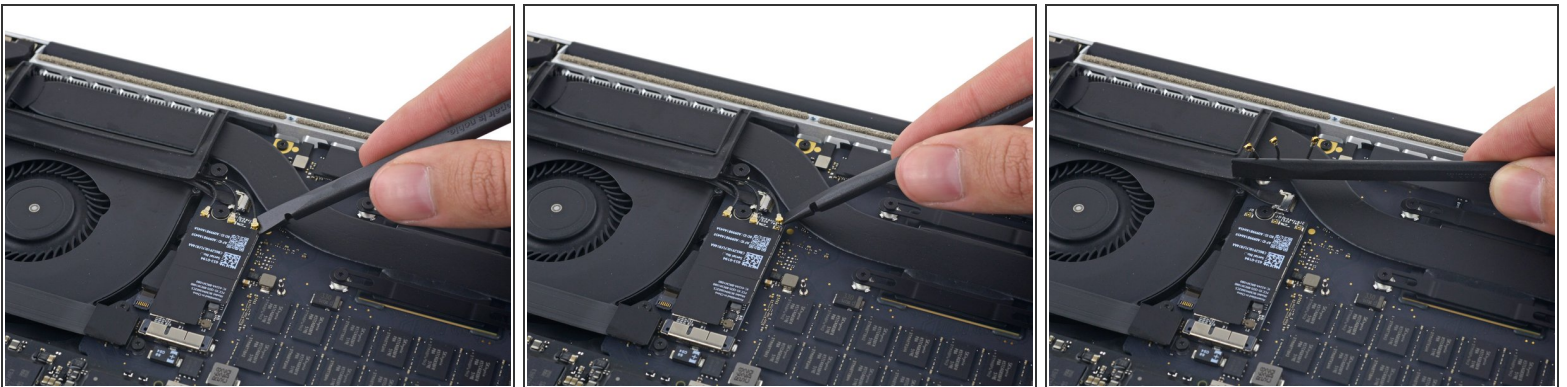
- Peel back the sticker covering the battery connector.

Step 5




- Gently lift each side of the battery connector to pry the connector out of its socket on the logic board.
- Bend the connector back toward the battery, ensuring that the battery connector doesn't accidentally make contact with the logic board.

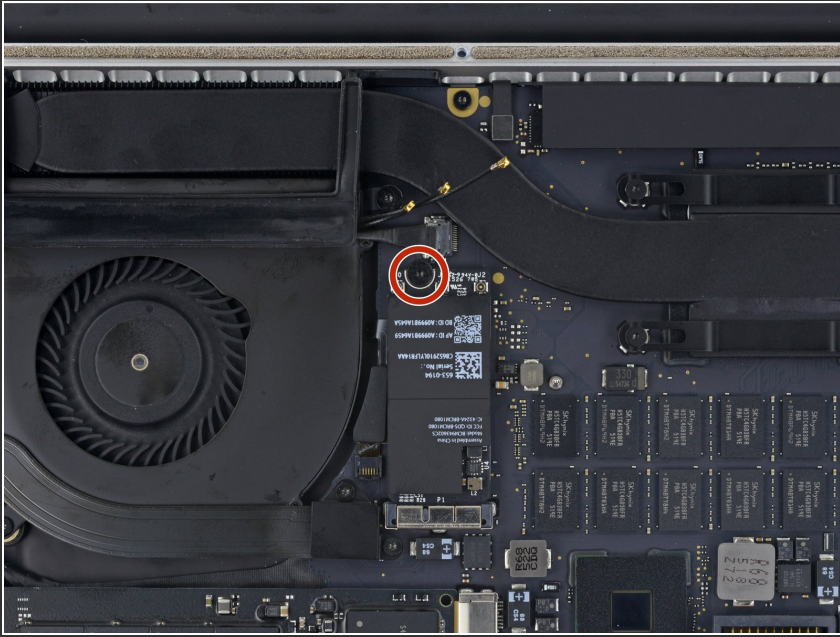
Step 6 — AirPort Board



- Disconnect the three airport Antenna cable connectors from their sockets on the AirPort board and bend them up and out of the way.

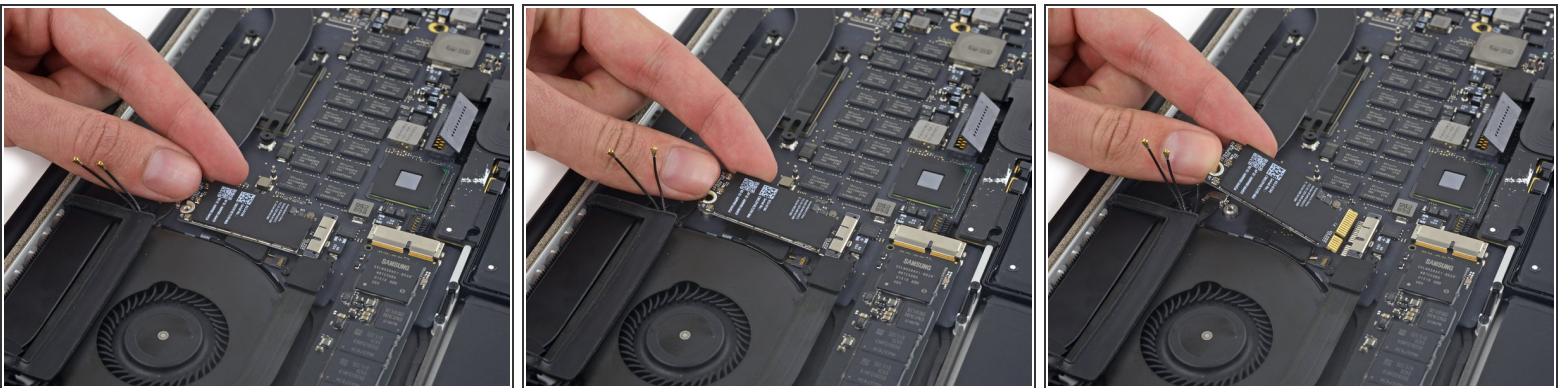
 Be careful to pry only against each connector, and not its cable or socket.

Step 7



- Remove the single 2.9 mm T5 Torx screw securing the AirPort board.

Step 8



- Lift the end of the AirPort board up enough to pass over the heat sink directly behind it.
 - ⚠ Do not lift the AirPort board too high, or you could damage the contacts or socket.
- Pull the AirPort board straight out of its socket on the logic board.
 - ⓘ There is a slightly adhesive thermal pad beneath the AirPort board. Be sure to reapply this when reinstalling the board, or transfer it to your replacement board.

To reassemble your device, follow these instructions in reverse order.

This document was generated on 2020-11-28 04:54:11 AM (MST).

