



# Samsung NX30 Screen Replacement

Replace a cracked or broken screen.

Written By: Julia Kilcup



## INTRODUCTION

The replacement of your screen takes a little work. With the right equipment though it is not too difficult to do. Just be ready to unscrew a lot of screws.



### TOOLS:

- [iFixit Opening Tools](#) (1)
- [Phillips #00 Screwdriver](#) (1)
- [Magnetic Project Mat](#) (1)



### PARTS:

- [11 Phillips head screws 4mm long](#) (1)



## Step 1 — Battery



- Flip the camera over so that the bottom of the camera is up.
- Push the battery switch towards the back of the camera.

## Step 2



- Locate the blue switch above the battery pack.
- Slide the blue switch into the camera in the direction of the arrow on the switch. When the switch has been pushed in the battery will spring up.

### Step 3



- Pull the battery out.

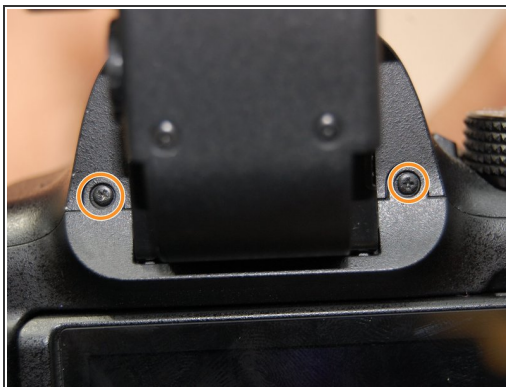
### Step 4 — Screen



- Unscrew the nine 4mm Phillips head screws surrounding the body of the camera. They are located on the bottom of the camera and both sides of the camera.

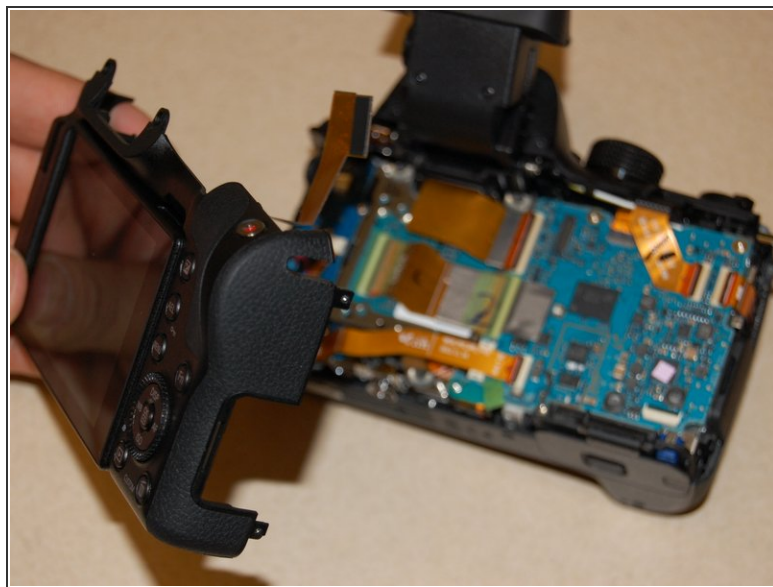


## Step 5



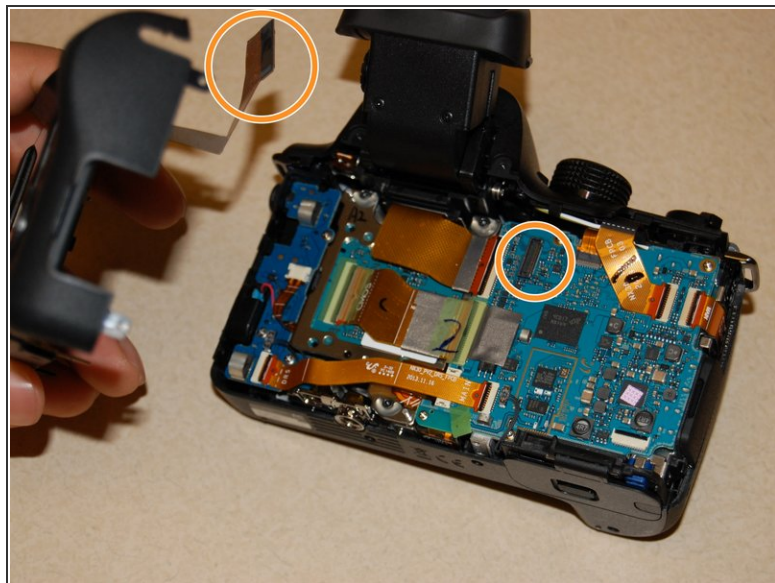
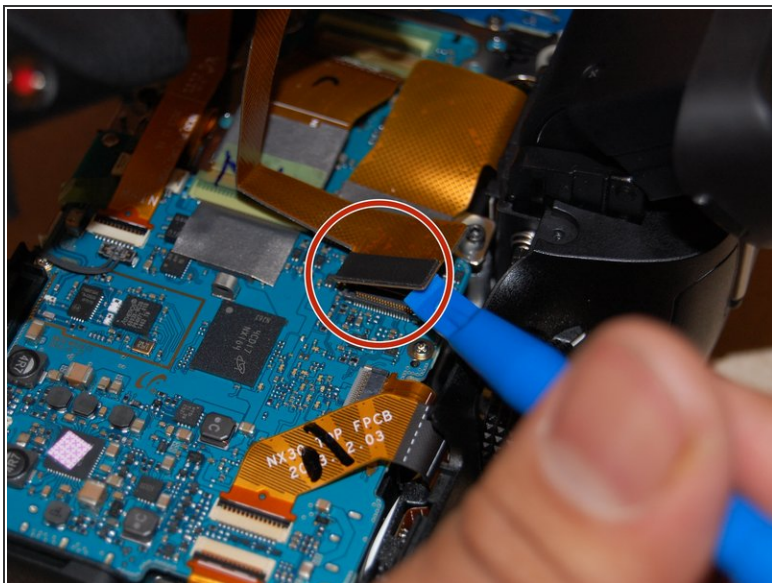
- Pull the viewer out from the camera and then up.
- Unscrew the two black 4mm Phillips head screws under it.

## Step 6



- Once the screws are all removed, place the camera face down, with the screen facing up.
  - Pry open the body using the plastic opening tool.
- ⚠ Gently open the body.

## Step 7



- Then use the plastic opening tool to dislodge the Ribbon Cable, located near the top of the camera, from the Circuit Board.
- The Ribbon Cable will be disconnected from the Circuit Board when you are done.

To reassemble your device, follow these instructions in reverse order.