



# Opening Procedure

Follow this guide to open an iPhone 6s and...

Written By: Evan Noronha



# INTRODUCTION

Follow this guide to open an iPhone 6s and access internal components for repair or replacement.

## TOOLS:


[P2 Pentalobe Screwdriver iPhone](#) (1)


[Suction Handle](#) (1)

[Spudger](#) (1)

## Step 1 — Pentalobe Screws



 Before disassembling your iPhone, discharge the battery below 25%. A charged lithium-ion battery can catch fire and/or explode if accidentally punctured.

 Power off your iPhone before beginning disassembly.

- Remove the two 3.4 mm P2 Pentalobe screws on the bottom edge of the iPhone, on either side of the Lightning connector.

## Step 2 — Opening Procedure



- If you don't have an [Anti-Clamp](#), follow the next three steps to use a suction handle.
- Apply mild heat to the lower edge of the iPhone using an [iOpener](#) or hair dryer for about a minute.
- ① Heat softens the adhesive securing the display, making it easier to open.

### Step 3



- ① Opening the display on the 6s separates a thin strip of adhesive around the perimeter of the display. If you prefer to replace the adhesive, have a set of new adhesive strips ready before you continue. It's possible to complete the repair without replacing the adhesive, and you probably won't notice any difference in functionality.
- Apply a suction cup to the lower left corner of the display assembly.
  - Take care **not** to place the suction cup over the home button.
- ① If your display is badly cracked, [covering it with a layer of clear packing tape](#) may allow the suction cup to adhere. Alternatively, very strong tape may be used instead of the suction cup. If all else fails, you can superglue the suction cup to the broken screen.

## Step 4



- Pull up on the suction cup with firm, constant pressure to create a slight gap between the front panel and rear case.
  - ① Take your time and apply firm, constant force. The display assembly is a much tighter fit than most devices and is held down with adhesive.
- ⚠ Pulling too hard may damage the display assembly. Apply just enough pressure to create a small gap between the display assembly and the rear case.**
- ① If you have any trouble, heat the front of the iPhone using an iOpener, hair dryer, or heat gun until it's slightly too hot to touch. This will help soften the adhesive securing the edges of the display.



## Step 5



ⓘ There is a notch on the underside of the display, just above the headphone jack. This is the safest place to begin prying the phone open.

- Place the flat edge of a spudger into the gap between the screen and rear case, directly above the headphone jack.

## Step 6



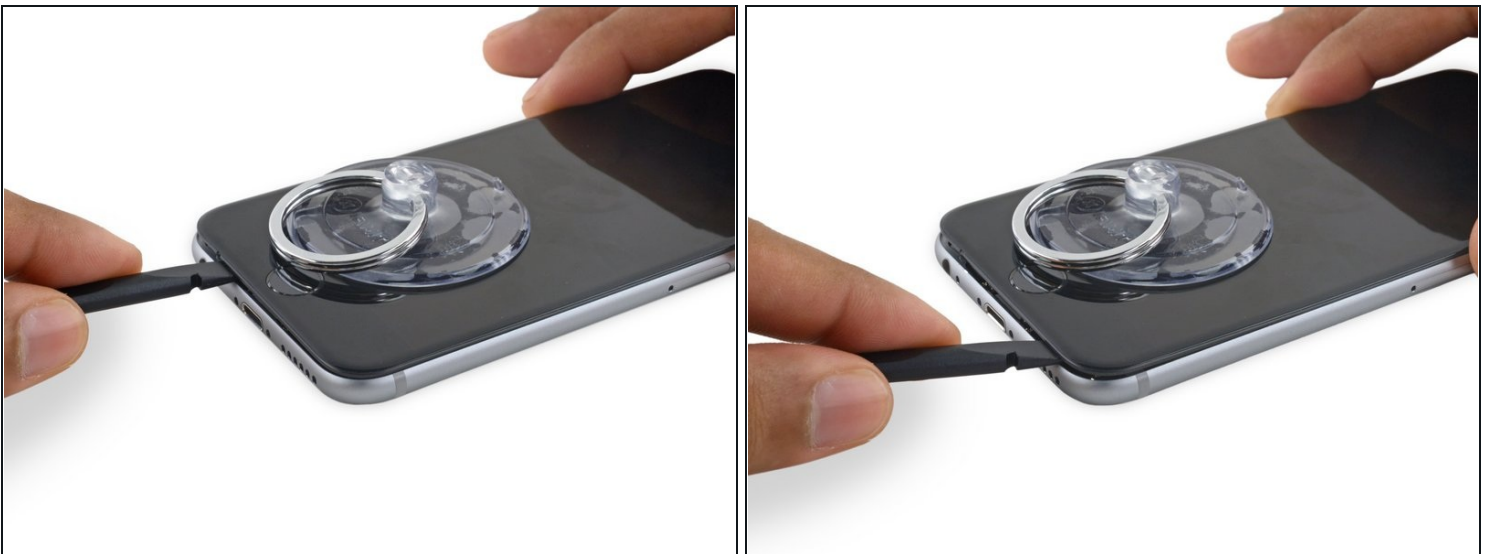
- Twist the spudger to widen the gap between the front panel assembly and the rest of the phone.

## Step 7



- Insert the flat end of the spudger on the left side of the phone, between the display assembly and rear case.
- Slide the spudger up the side of the phone to separate the adhesive and pop the clips free.

## Step 8



- Remove the spudger and reinsert it on the bottom edge, where you pried the phone open.
- Slide the spudger to the right, along the bottom edge of the phone.

## Step 9



- Slide the spudger up the right side to continue separating the adhesive and popping the display clips free from the iPhone.

## Step 10

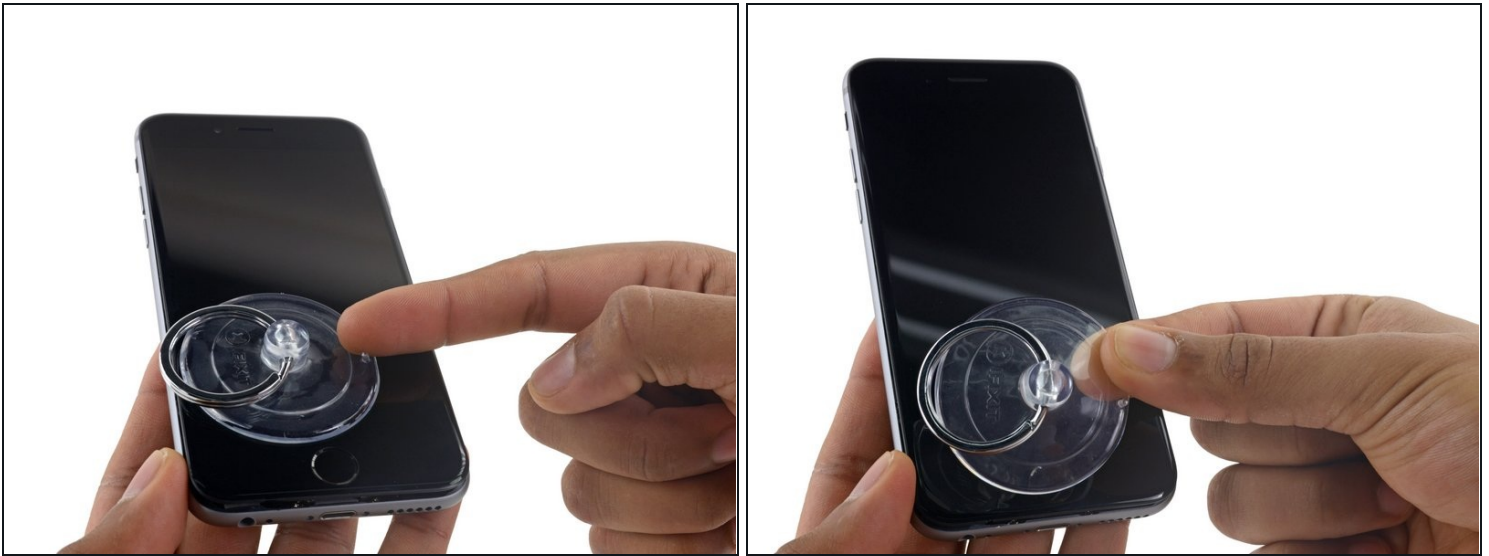


- Use the suction cup to open the display, breaking the last of the adhesive.

⚠ Don't open the display more than 90°, as it is still connected at the top by three cables that may break if stretched.



## Step 11



- Pull up on the nub on the top side of the suction cup to remove it from the front panel.

## Step 12



- Gently grasp the display assembly and lift it up to open the phone, using the clips at the top of the front panel as a hinge.
- Open the display to about a 90° angle, and lean it against something to keep it propped up while you're working on the phone.
  - Add a rubber band to keep the display securely in place while you work. This prevents undue strain on the display cables.
- ⓘ In a pinch, you can use an unopened canned beverage to hold the display.

---

To reassemble your device, follow these instructions in reverse order.