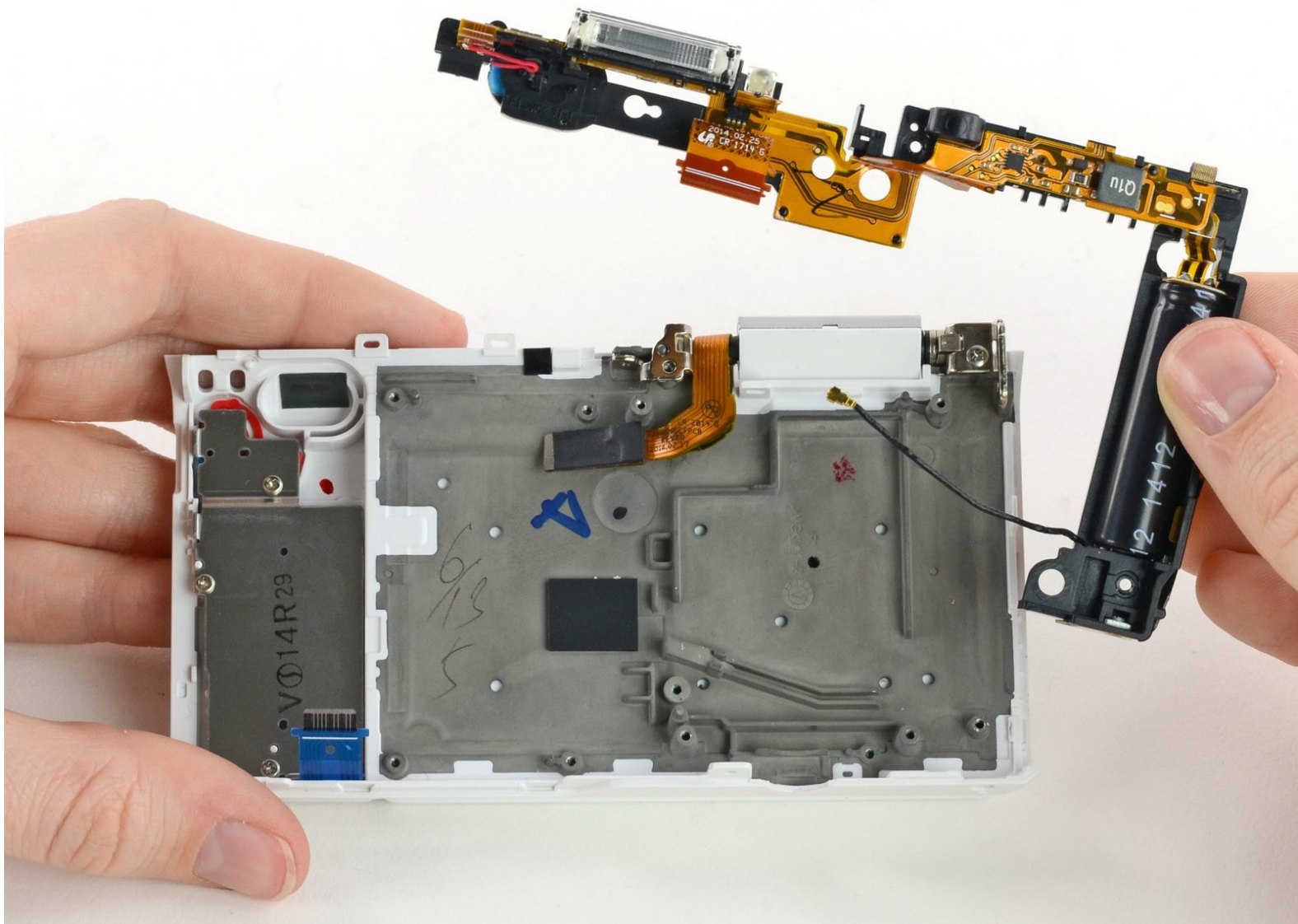




# Samsung NX Mini Flash Assembly Replacement

This guide will show you how to replace the flash assembly in the Samsung NX Mini

Written By: Kelsea Weber



---

## INTRODUCTION

This guide will show you how to remove the flash assembly in the Samsung NX Mini. The flash assembly includes the capacitor, so be sure to discharge the capacitor prior to removal. Learn more about discharging capacitors [here](#).



### TOOLS:

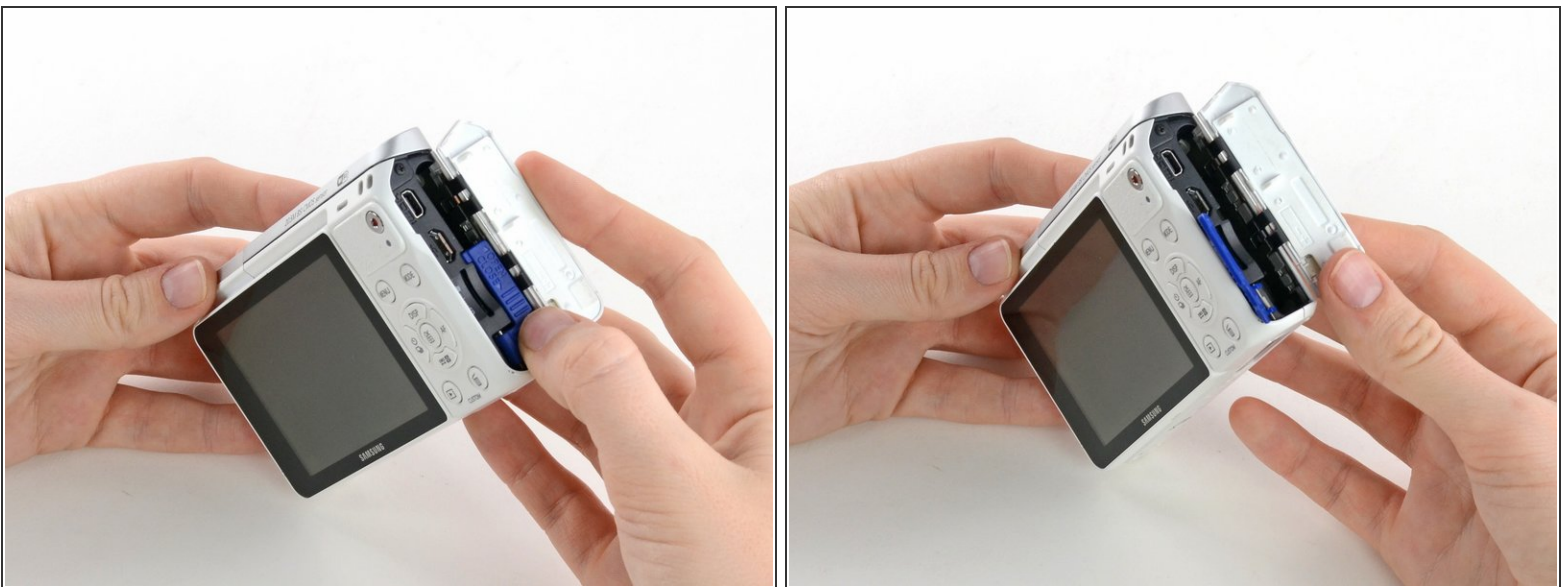
- [Phillips #00 Screwdriver](#) (1)
  - [Spudger](#) (1)
  - [Tweezers](#) (1)
  - [Magnetic Project Mat](#) (1)
-


## Step 1 — Battery



- Orient the camera so the button panel and LCD are facing you.
- Use a spudger or fingernail to open the battery compartment on the right side of the camera.

## Step 2



- Push the blue trapdoor to the left to release the battery, and remove the battery.
-  There is no battery shown in this photo.



### Step 3 — Front Case



- Use a Phillips #00 screwdriver to remove the 4 mm screw inside the battery compartment.

### Step 4



- Remove the 4 mm Phillips #00 screw hiding in the external flash port.

## Step 5



- Remove the four 5 mm Phillips #00 screws from the lens assembly.

## Step 6



- Remove the metal lens mount by hand or with tweezers.
- ⚠ Be careful not to touch the sensor in the center of the lens assembly.

## Step 7



- Use tweezers to remove the inner metal ring.

## Step 8



- Use a Phillips #00 screwdriver to remove the three 4 mm screws from the bottom of the case.

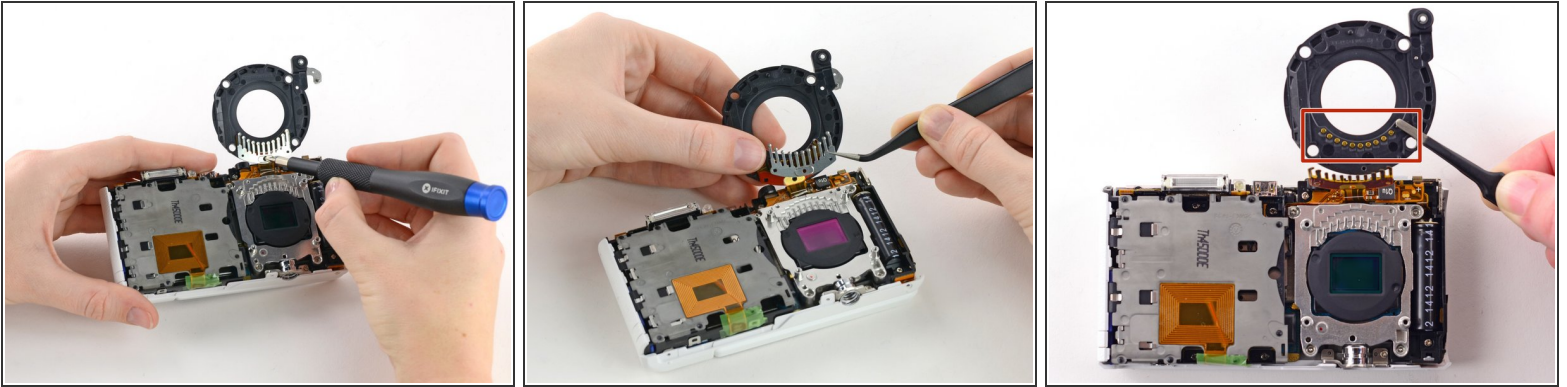
## Step 9



- Use your hands to slowly pull the front casing away from the camera.
- ⓘ The case is attached with multiple clips that may make a cracking noise as you pull it away from the camera.



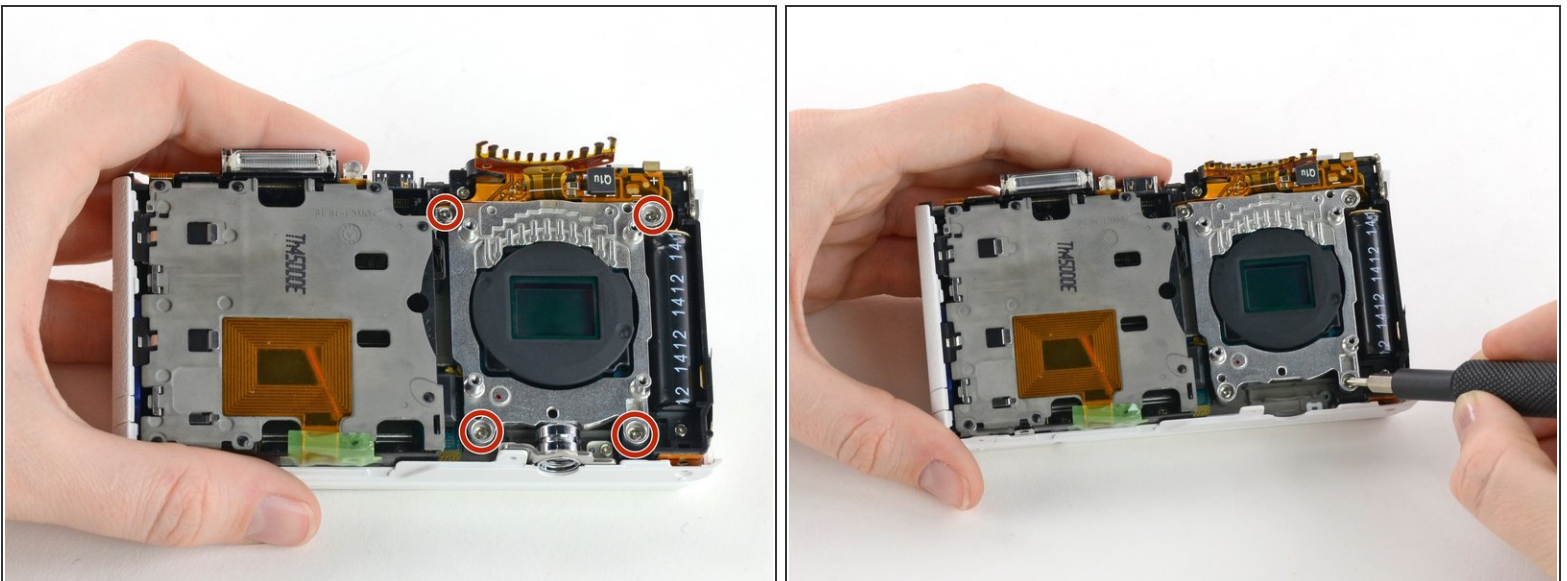
## Step 10 — Sensor



- Gently flip the sensor cover back to expose the screw attaching the sensor cover to the ribbon cable.
- Use a Phillips #00 screwdriver to remove the 3 mm screw from the sensor cover.
- Use tweezers to remove the metal contact cover. Be sure to carefully remove the cover so the gold contacts remain in place.

⚠ The gold lens contacts lying beneath the ribbon cable become loose when the screw and contact cover are removed.

## Step 11

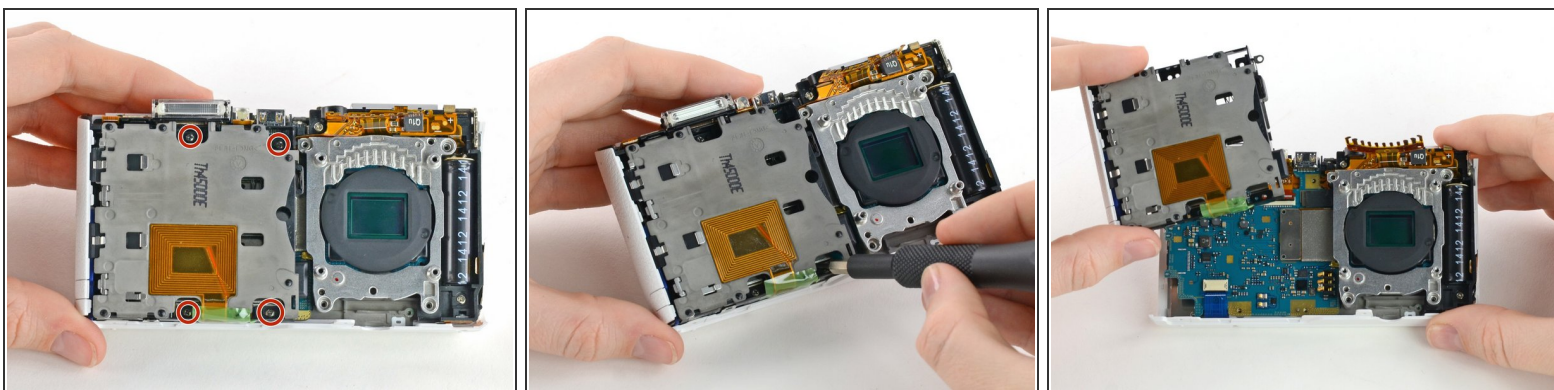


- Remove the four 4 mm Phillips #00 screws holding the sensor mount in place.

This document was generated on 2021-03-07 12:52:18 AM (MST).

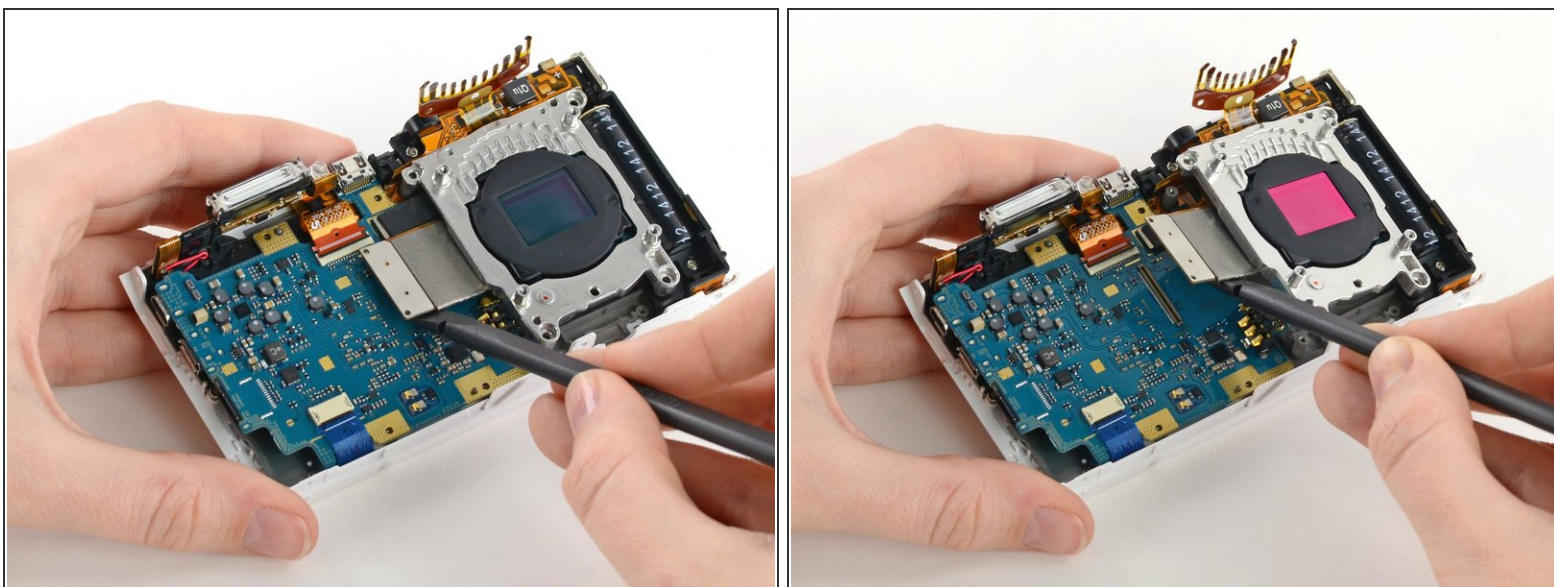


## Step 12



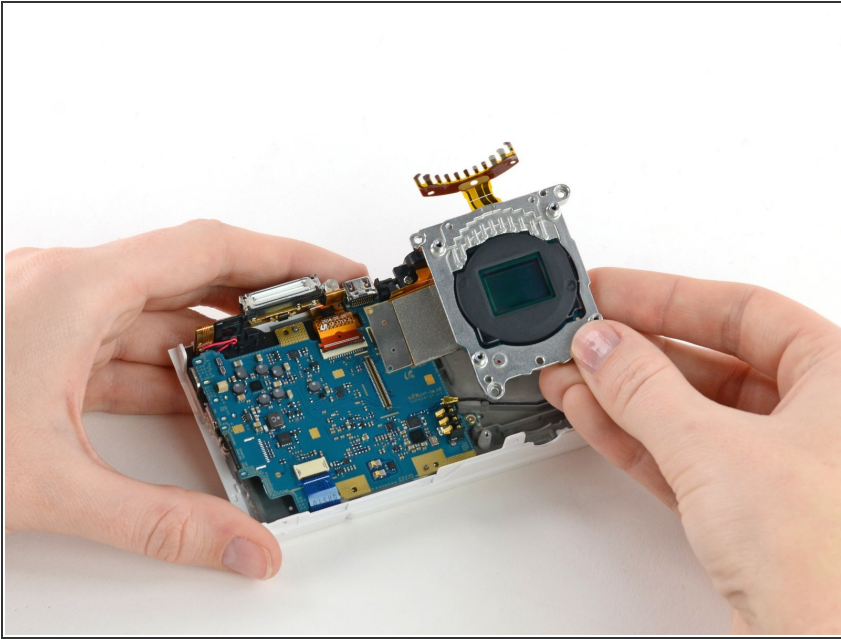
- Remove the four 4 mm Phillips #00 screws securing the battery compartment to the mother board.
- Remove the battery compartment.

## Step 13



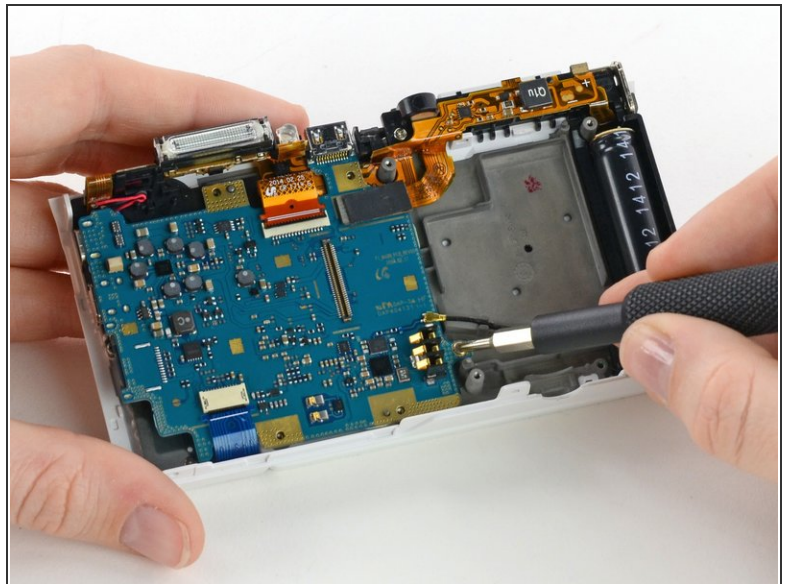
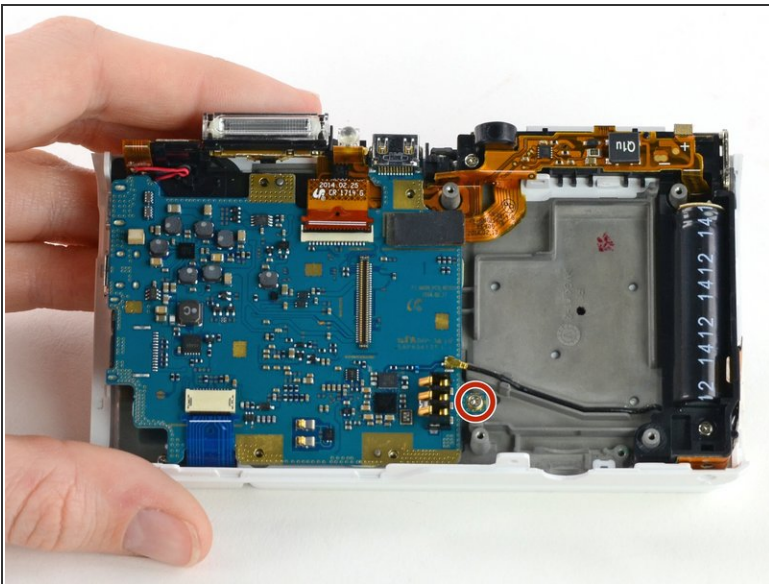
- Use a spudger to disconnect the ribbon cable connecting the image sensor to the motherboard.

## Step 14



- Gently remove the sensor mount from the camera case.

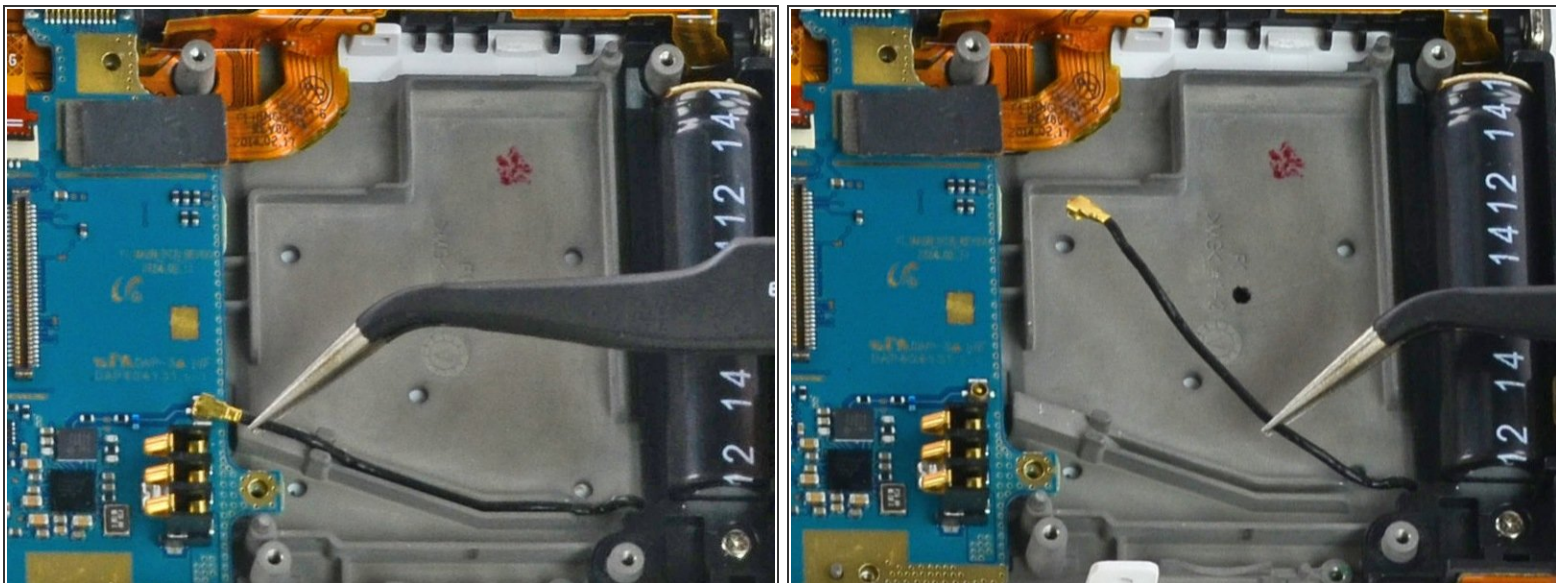
## Step 15 — Motherboard



- Use a Phillips #00 screwdriver to remove the 3 mm screw located below the wifi antenna.

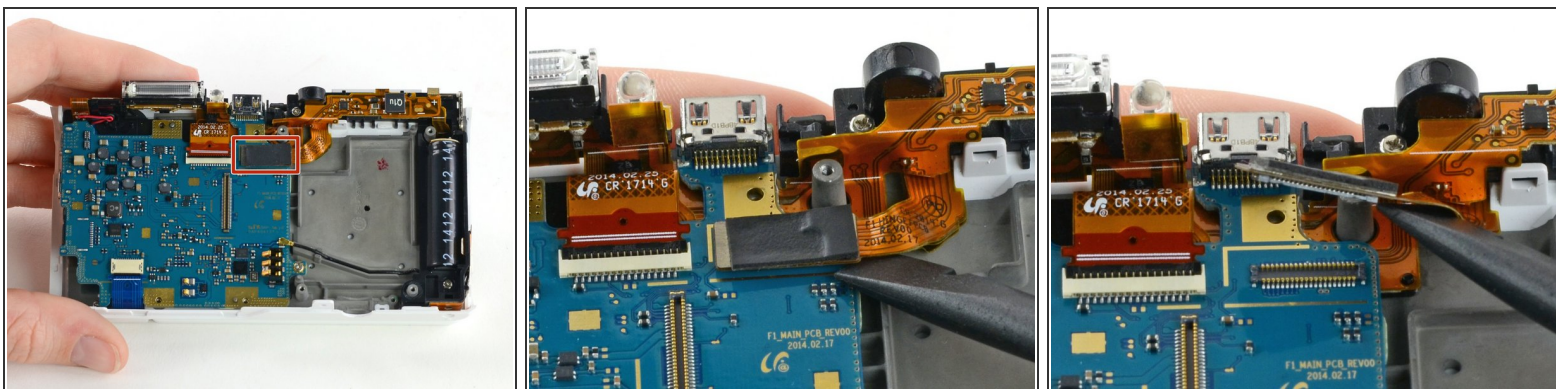


## Step 16



- Use tweezers to disconnect the wifi antenna from the motherboard.

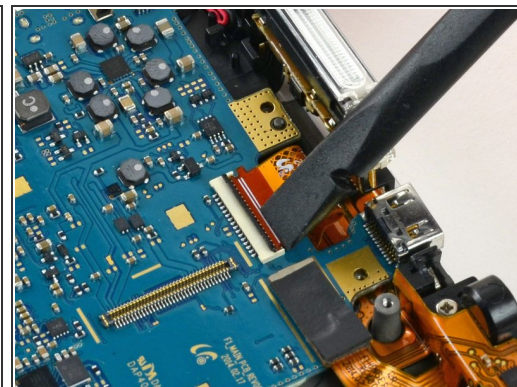
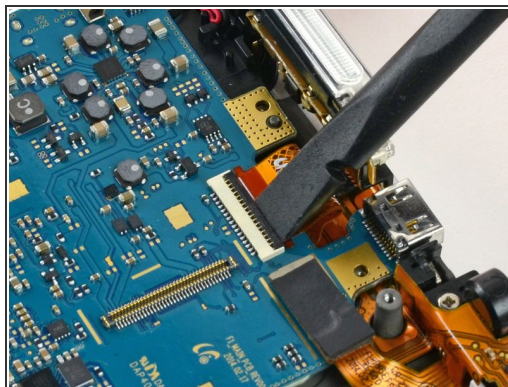
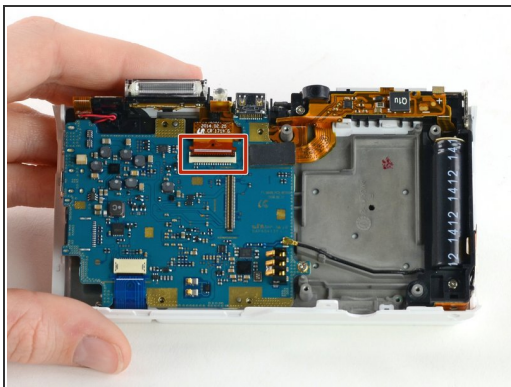
## Step 17



- Use a spudger to disconnect the LCD ribbon cable by prying it straight up from the motherboard.

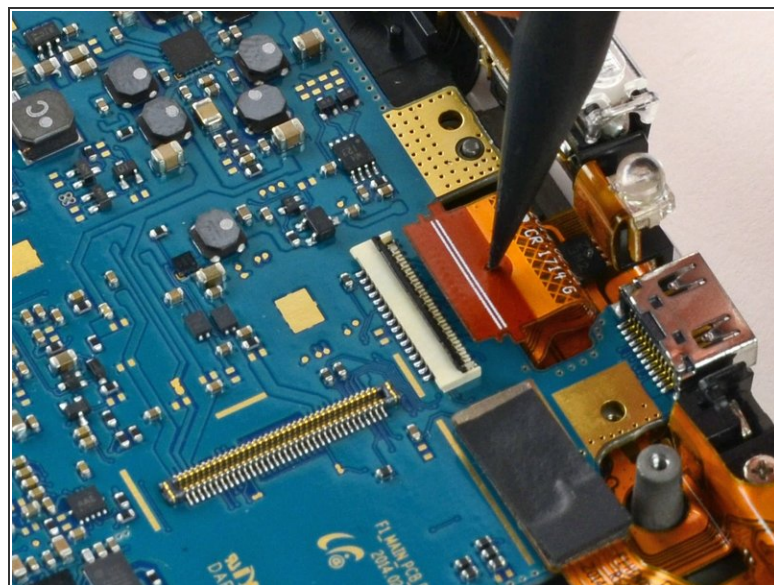
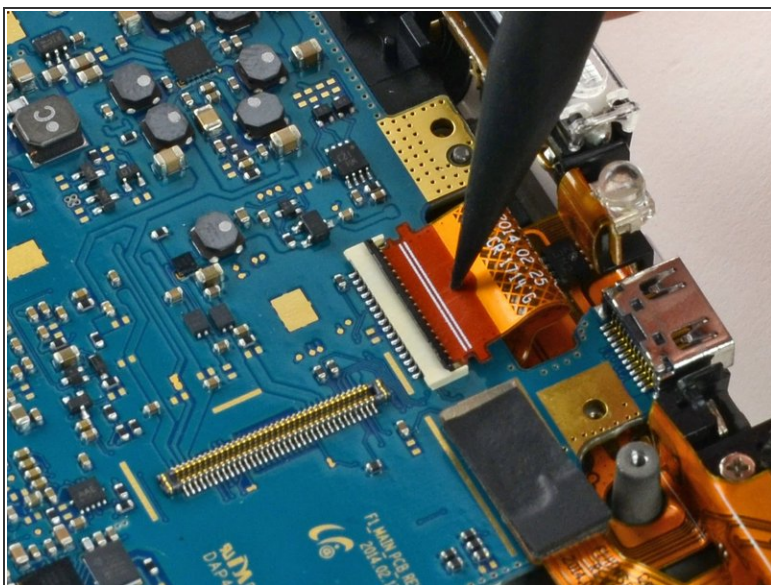


## Step 18



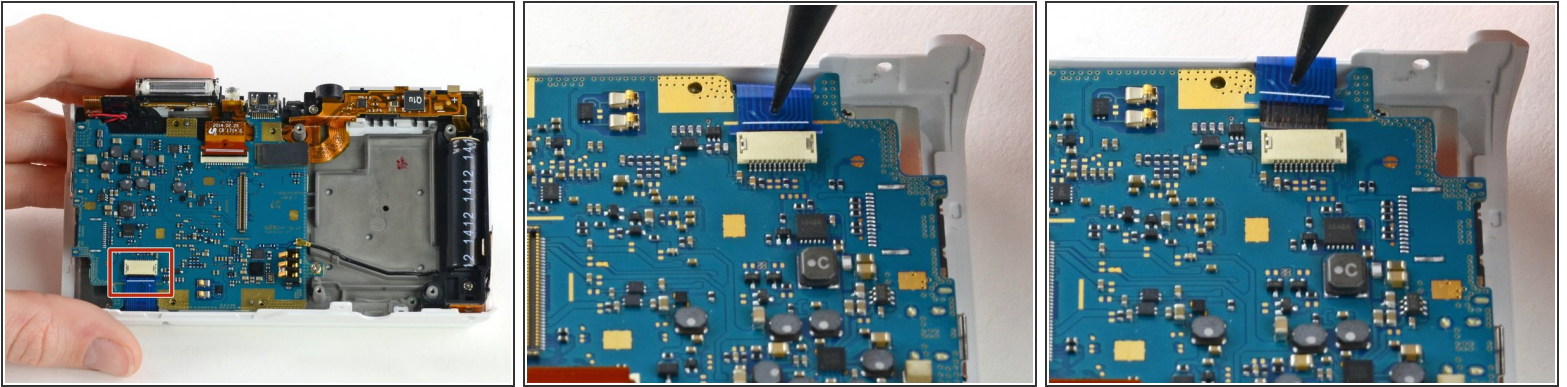
- Use a spudger to unlock the topmost ZIF connector by flipping open the black flap.

## Step 19



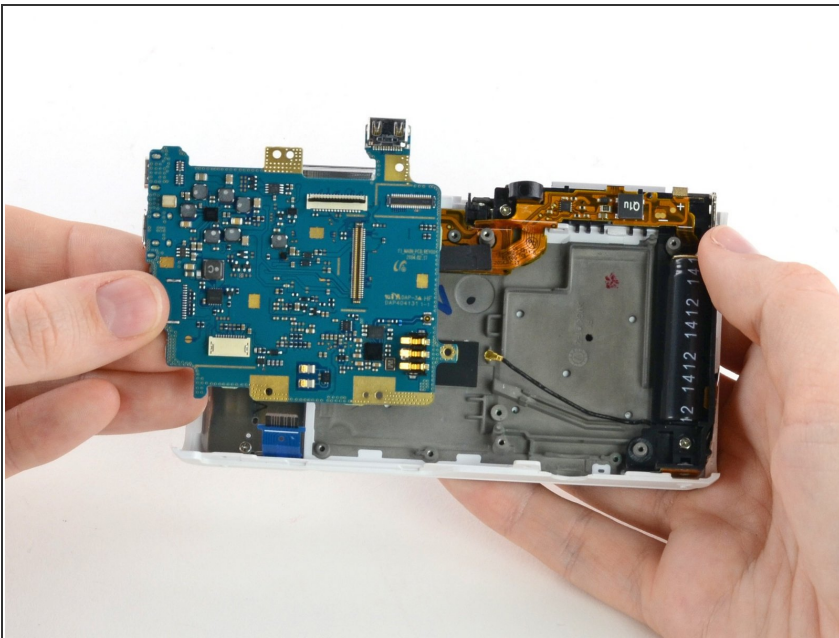
- Insert the pointed end of a spudger into the hole in the middle of the ribbon cable.
- Gently pull the spudger back to slide the ribbon cable out of its connector.

## Step 20



- Disconnect the blue ribbon cable from the motherboard.
- Insert the pointed end of a spudger into the hole in the top of the ribbon.
- Gently pull the ribbon from the connector.

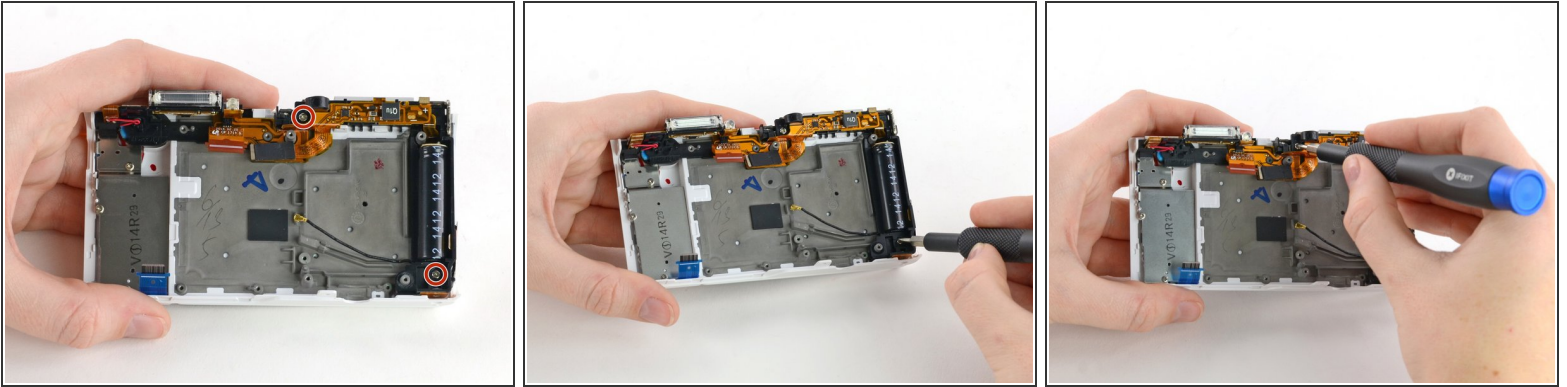
## Step 21



- Remove the motherboard from the camera.

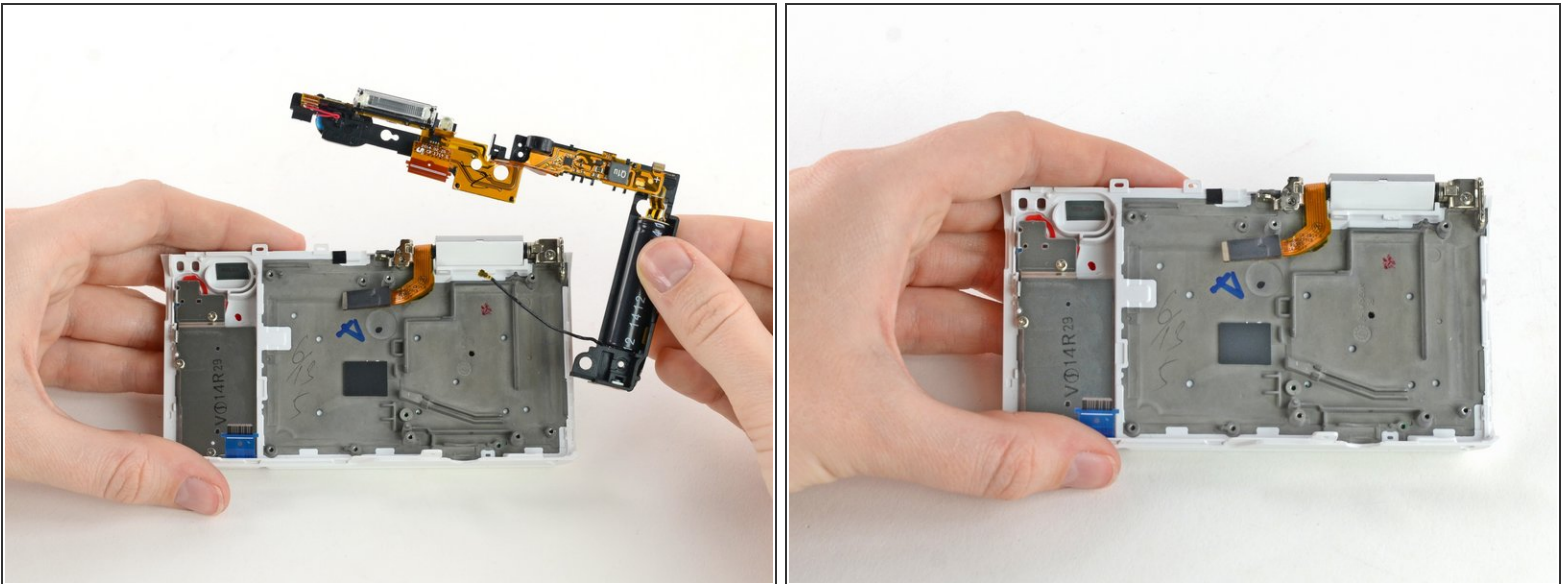


## Step 22 — Flash Assembly



- Use a Phillips #00 screwdriver to remove the two 5 mm screws holding the flash assembly to the camera case.

## Step 23



- Remove the flash assembly by gently pulling it away from the case.
- ⓘ You may need to use a spudger to release some of the clips holding the assembly in place.
- ⚠ Avoid touching the ends of the capacitor (the large black cylinder on the right). Capacitors that haven't been discharged may cause electric shock. Learn how to discharge a capacitor [here](#).



To reassemble your device, follow these instructions in reverse order.