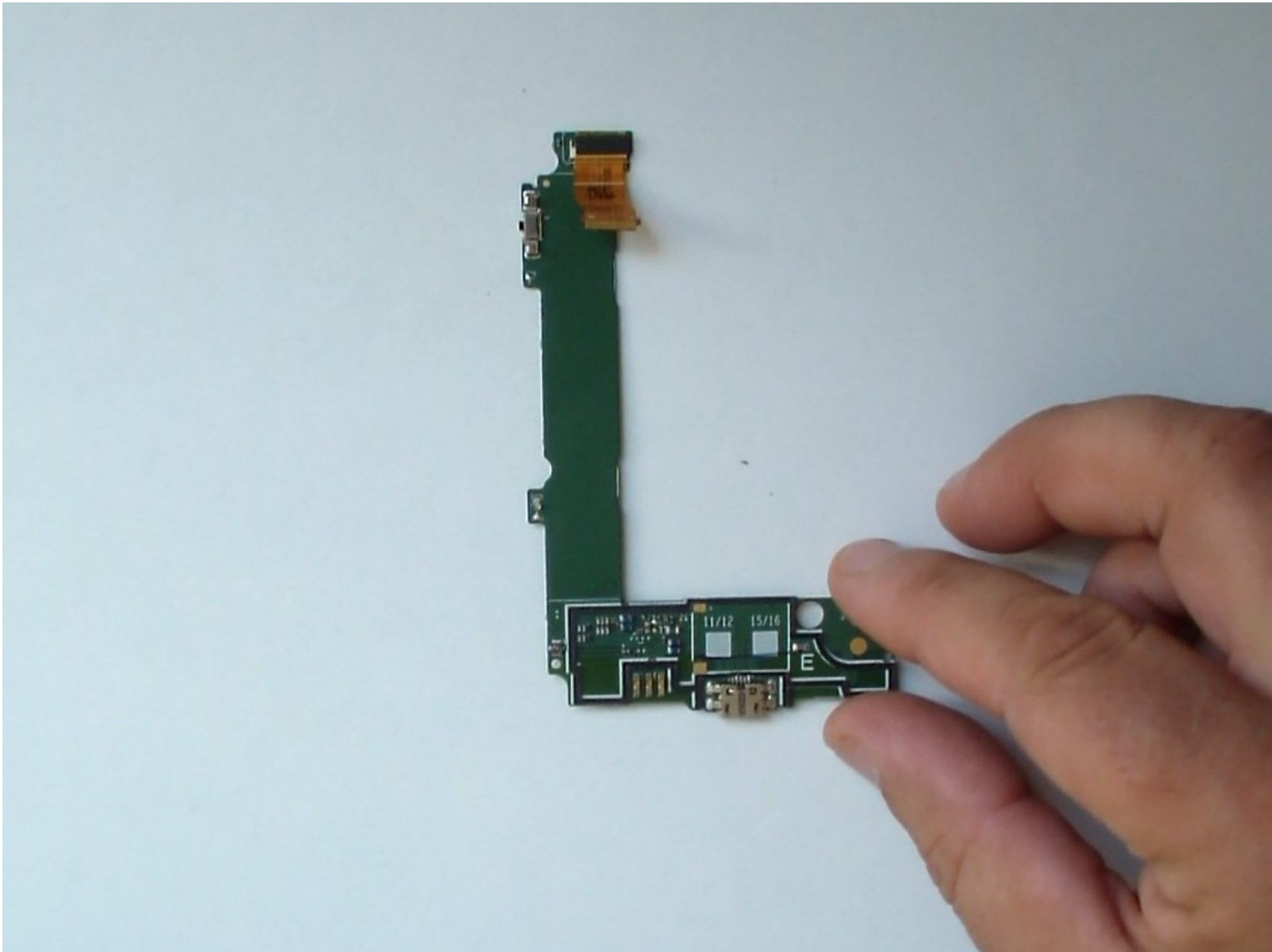




# Microsoft Lumia 535 Charging Port Dock and Microphone Flex Replacement

Microsoft Lumia 535 Charging Port Dock and Microphone Flex Replacement

Written By: ZFix



## INTRODUCTION

Lumia 535

RM-1090 / RM-1091/ RM-1089 / RM-1092

If you have a problem with the charging port or the microphone you have to change Microsoft Lumia 535 Charging Port Dock and Microphone Flex.

[video: <https://www.youtube.com/watch?v=ykqv8C324UA>]

---

### TOOLS:

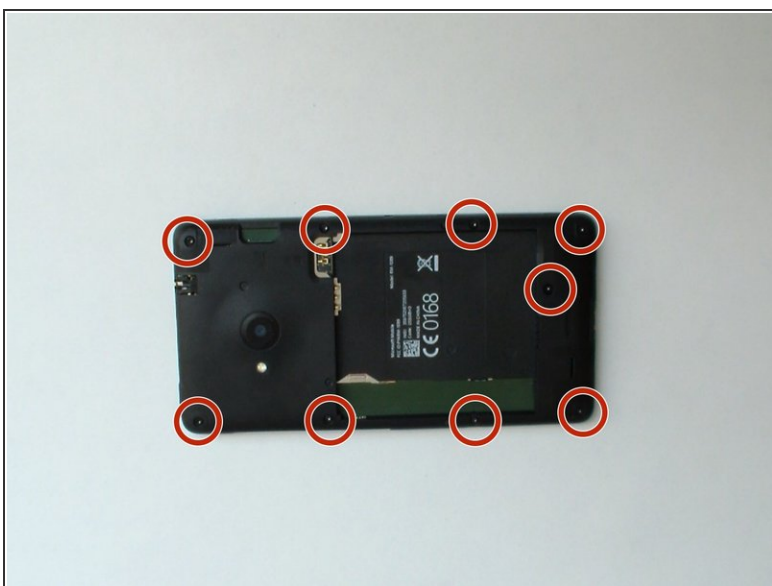
- [T4 Torx Screwdriver](#) (1)
  - [Tweezers](#) (1)
  - [Heat Gun](#) (1)
  - [iFixit Opening Tools](#) (1)
  - [Plastic Cards](#) (1)
-

## Step 1 — Back Cover / Rear Case



- Turn off the phone.
- Remove the battery and any SIM and memory cards.

## Step 2



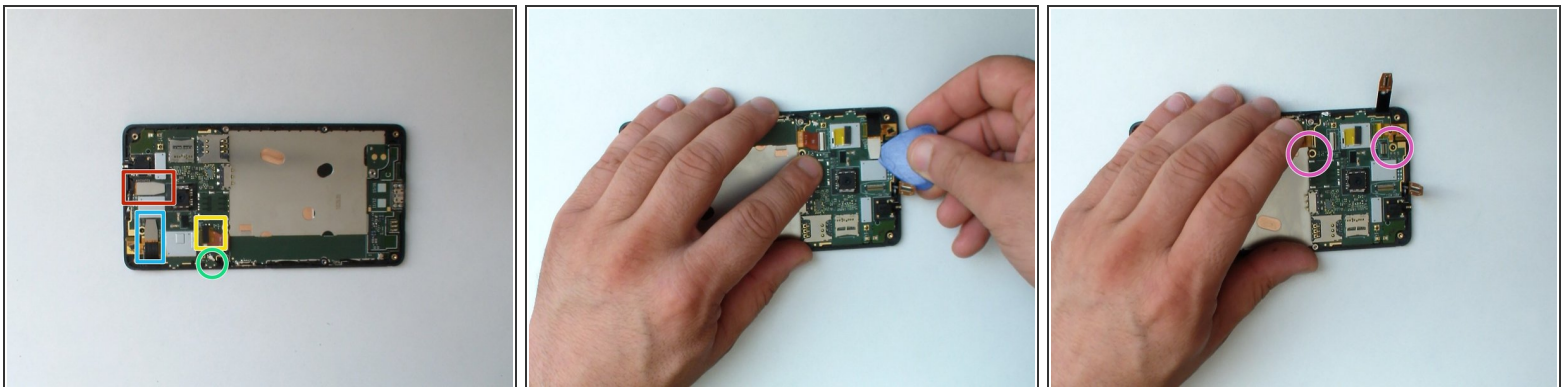
- With a screwdriver Torx T4 remove the 9x screws.

### Step 3



- With a plastic opening tool separate the back cover from the middle frame.

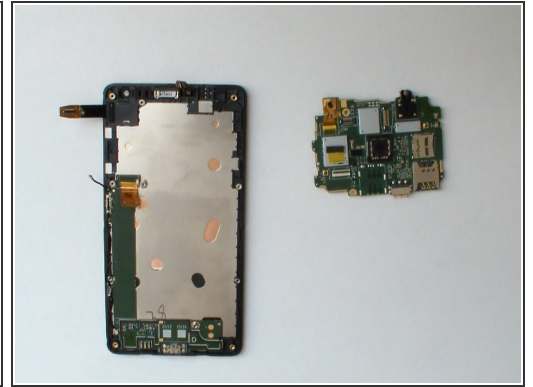
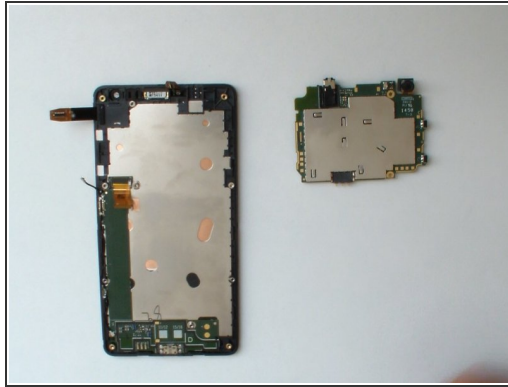
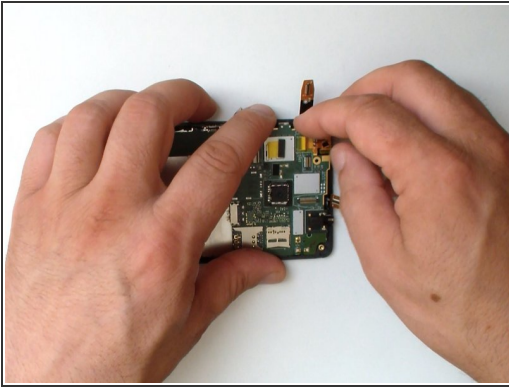
### Step 4 — Logic board



- Disconnect:
  - Touch screen flex cable
  - LCD Display flex cable
  - Charging Dock board flex cable - remove the foam and tape, then flip up the black lock before easing out the flex.
  - Coaxial antenna cable - take your time here, be sure to pull the metal connector and not the cable or you risk pulling the cable from the connector.
- Remove the 2x Torx T4 screws.

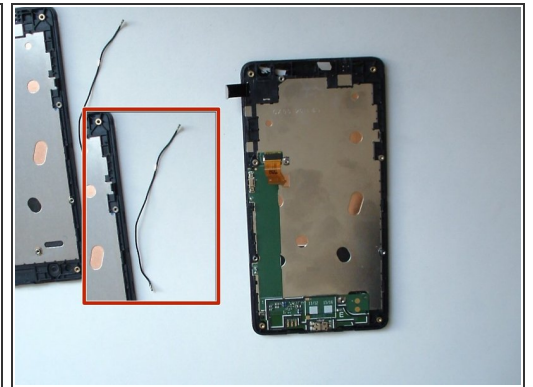
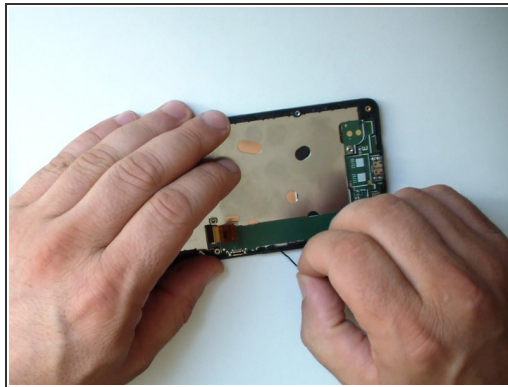
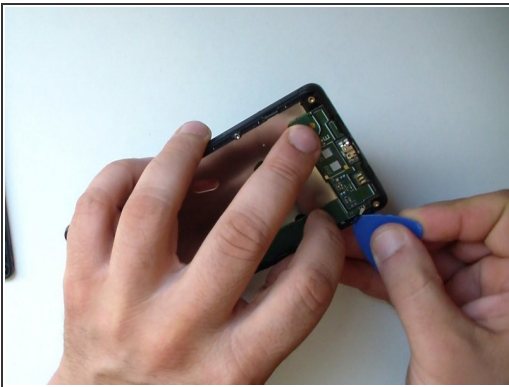


## Step 5



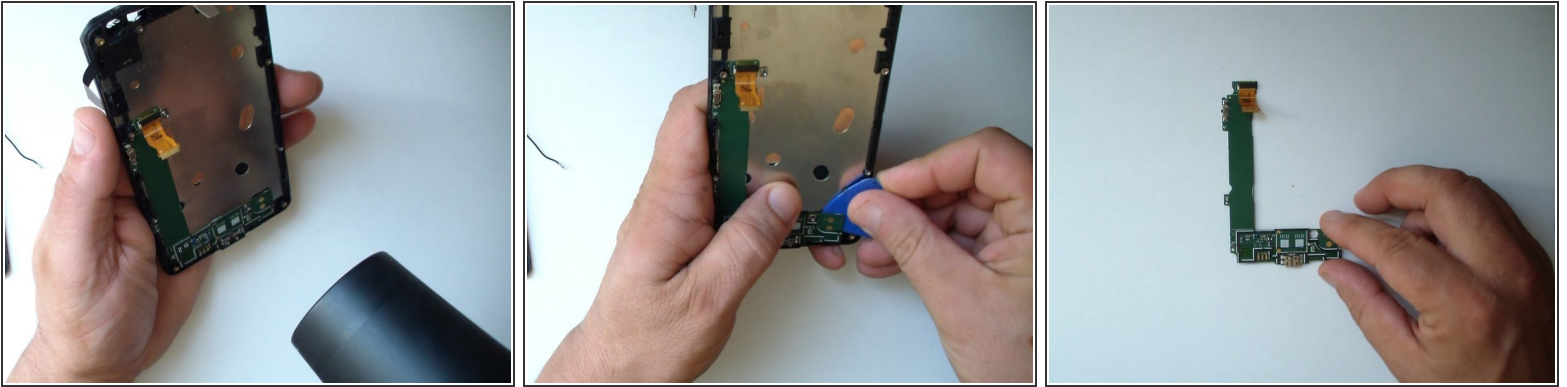
- Insert wisdom here.

## Step 6 — Charging Port Dock and Microphone Flex



- Disconnect the coaxial antenna cable.
- The cable is attached at several points to the frame and to the board. Gently remove it.

## Step 7



- The board is glued to the main frame by adhesive tape.
- Use a hot gun or hair dryer and warm the board.
- Now you can easily separate the board from the main frame.

⚠ For the separation process use only plastic tools.

To reassemble your device, follow these instructions in reverse order.