



Upgrading the SSD

Written By: Felice Suglia





TOOLS:

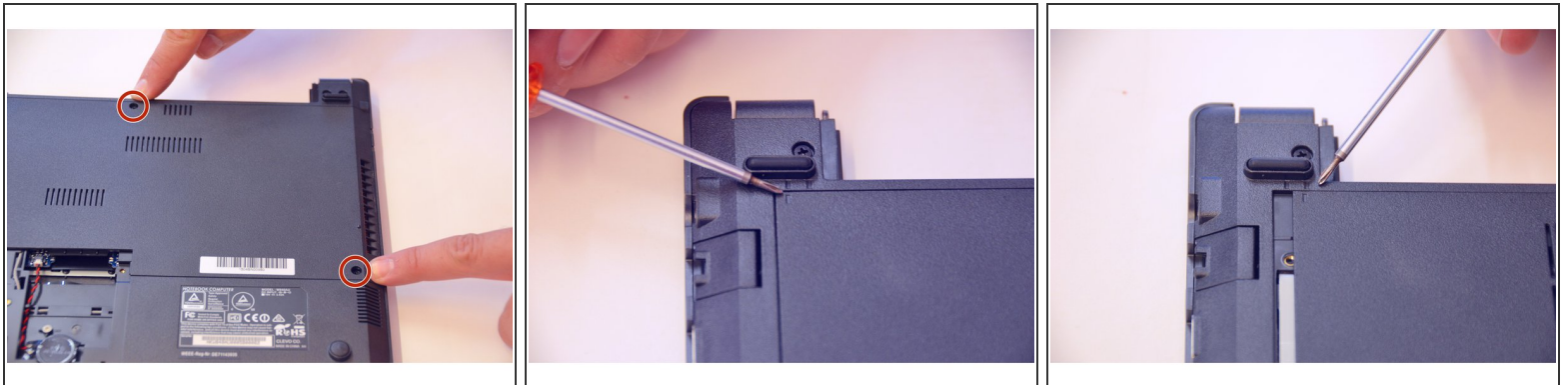
- [Phillips #0 Screwdriver](#) (1)
-

Step 1 — Battery



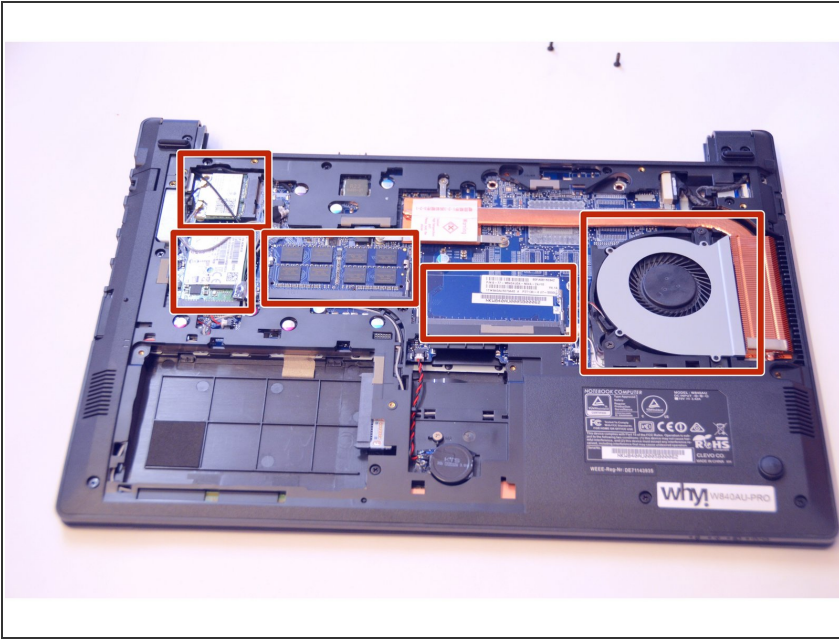
- Open the latch on the right side that secures the battery in place.
- Open the latch on the left side that secures the battery in place.
- Now remove the battery.

Step 2 — Main access cover



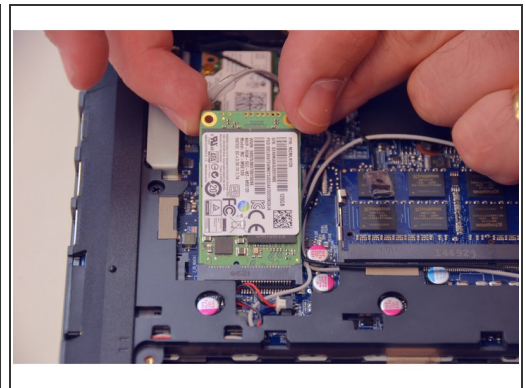
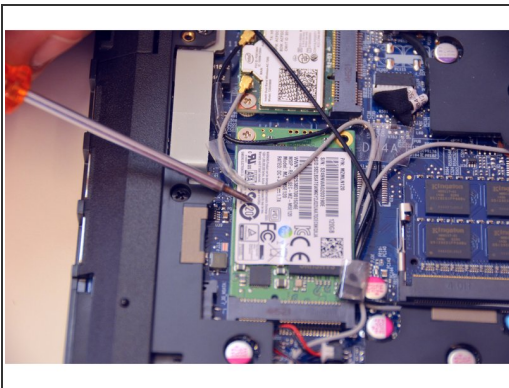
- Using a Philips-head screwdriver remove highlighted screws.
- Look at the marking to see how to remove the access cover.
- Remove the access cover as shown by the marker.

Step 3



- You now have access to all components of this laptop.

Step 4 — PCIe SSD



- This is where you'll find the PCIe SSD.
- Remove the fastening screw with the Philips-head screwdriver.
- Remove the PCIe SSD.

Step 5



- This is what the PCIe SSD looks like.

To put the device back together, follow the steps in reverse order.