



# Nikon Coolpix S220 Battery and Memory Card Replacement

If the battery is dead or the memory card is...

Written By: Shauna



# INTRODUCTION

If the battery is dead or the memory card is full, it must be changed or charged. In order to accomplish either they must be removed. This guide will show the reader how to simply remove either one.

---

## ⚙️ PARTS:

[Nikon Coolpix S220 Battery](#) (1)

[16 GB SD Card](#) (1)

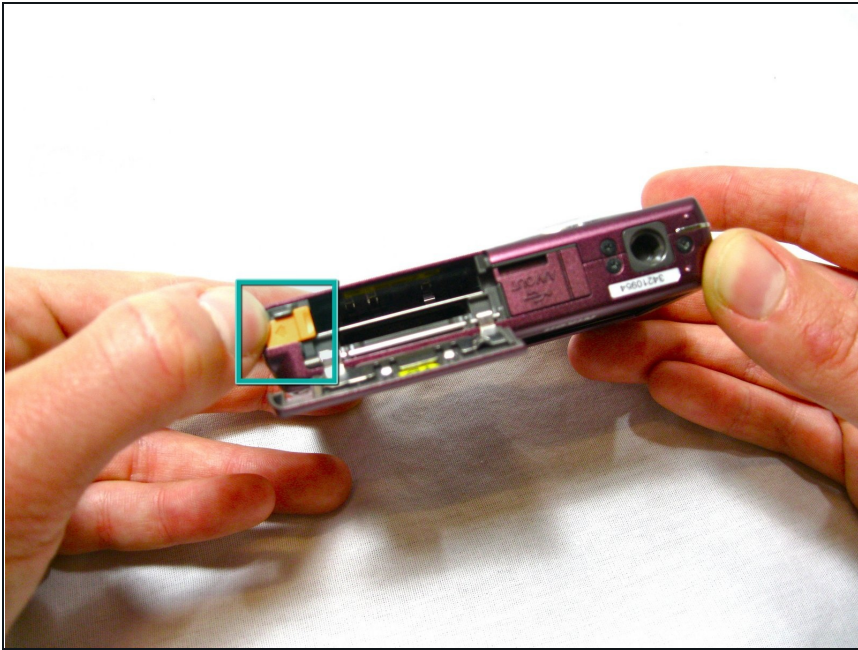
---

### Step 1 — Battery and Memory Card



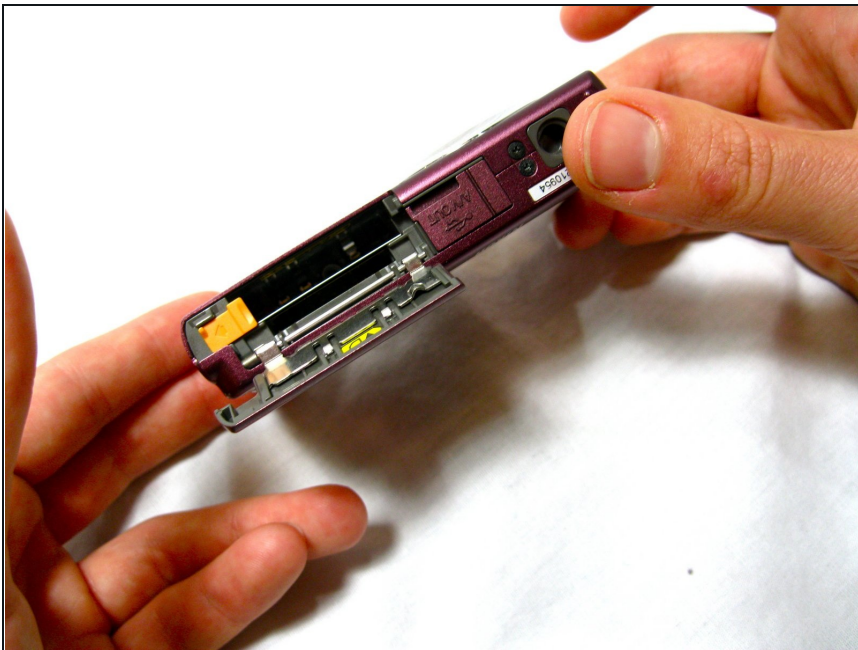
- Slide the battery and memory card cover (located on the bottom of the camera) to release it.

## Step 2



- To release battery you must slide the orange hatch, once doing so the battery will pop up.
- Remove with [tweezers](#) or your fingers.

## Step 3



- To release the memory card, simply push down on the memory card and it will pop up as the battery did.
- You will be able to remove with your fingers.

---

To reassemble your device, follow these instructions in reverse order.

