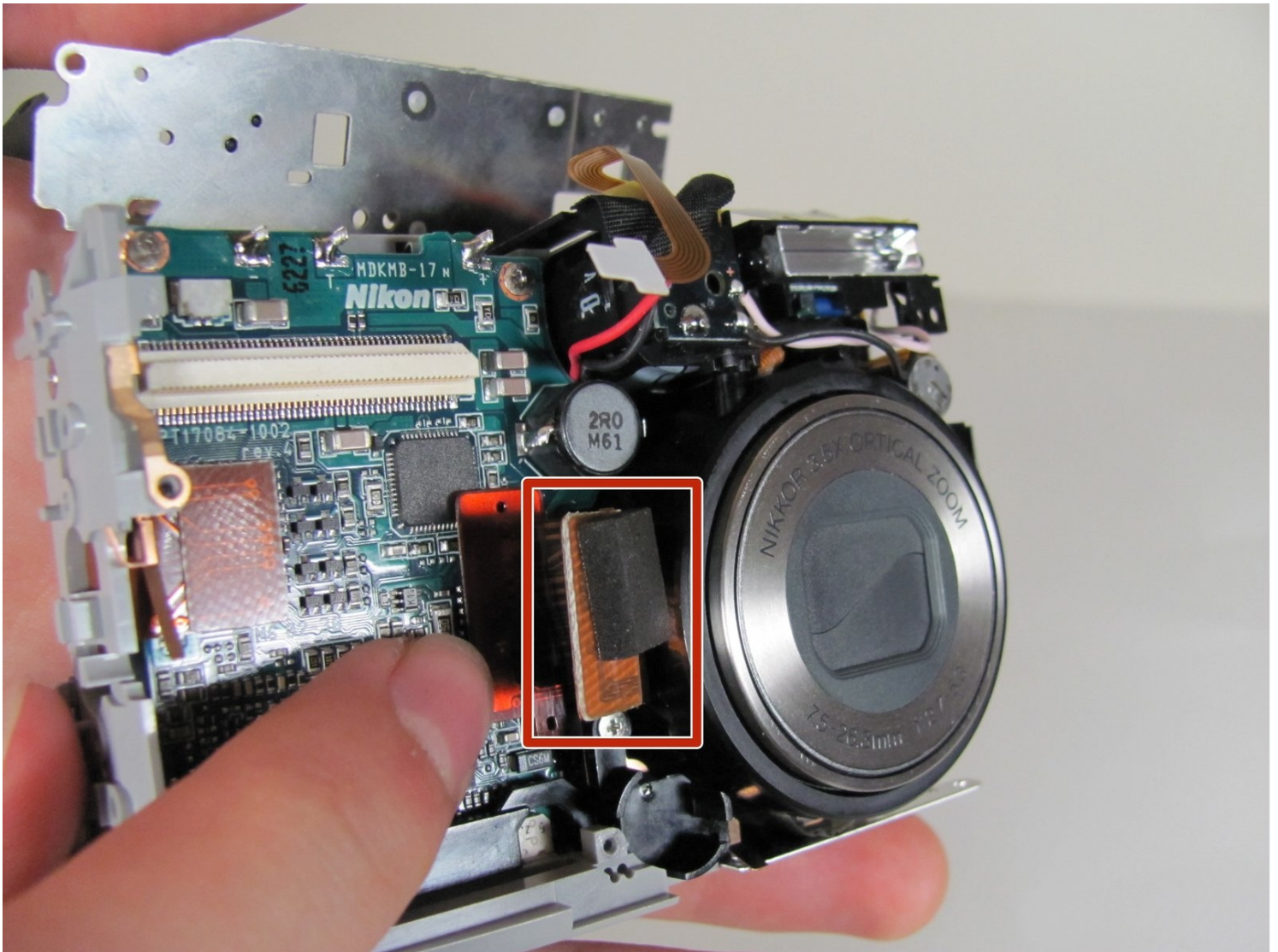




Nikon Coolpix P4 Lens Replacement

This guide provides simple step-by-step...

Written By: Luke Baumann



INTRODUCTION

This guide provides simple step-by-step instructions explaining how to replace the lens of a Nikon COOLPIX P4. The lens on this digital camera allows users to zoom in and out and is protected by a shutter. The camera itself is a basic compact point-and-shoot model.

WARNING: The lens is made of glass. There is a risk of scratches, cracks, or other damage to the glass, so caution should be exercised when handling the lens.

The lens of the Nikon COOLPIX P4 may need to be replaced if there are lens errors, cracks or damage, lens housing problems, or other issues that render the camera faulty and/or inoperable. This is a beginner-friendly guide. No special skills are required to complete this guide, only a basic understanding of how to use a screwdriver and handle a camera.

WARNING: This replacement guide involves disassembling parts of the Nikon COOLPIX P4 in order to complete the lens replacement. Wires, cables, and the motherboard will be exposed. As with disassembling any electronic device, there is potential risk of damage. Specifically, in Step 10, there is potential for device damage, so extra care must be taken.

TOOLS:

Phillips #00 Screwdriver (1)

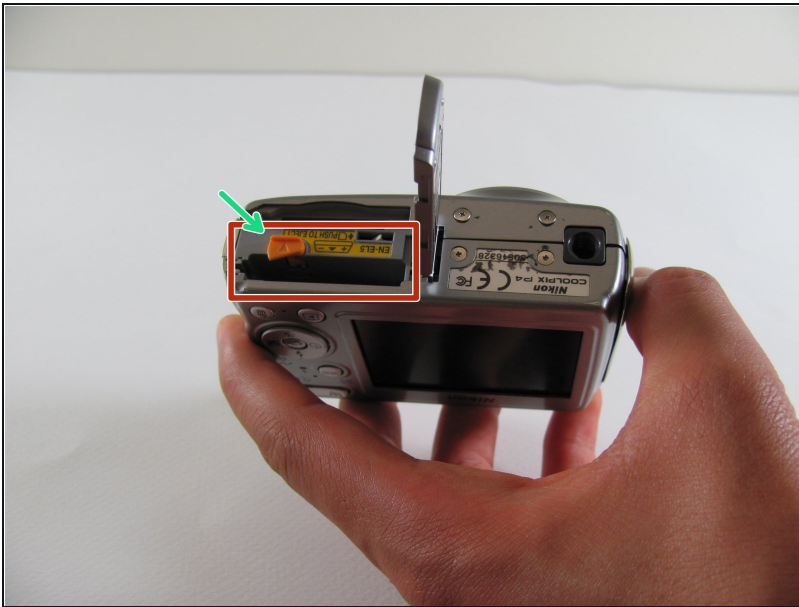
Anti-Static Project Tray (1)

Step 1 — Battery



- Flip the camera upside down (have the side with the buttons facing away from you)
- Look for the side with the triangle icon with three lines in it, this is the battery door. Add pressure and slide this door slightly until it clicks and pops open.

Step 2



- Once the door clicks, you can open it to reveal the slots holding the memory card and the battery.
- Focusing on the larger slot, this holds the battery. Push the orange tab away from the slot, this will eject the old battery if one was previously inside.
- Once this slot is open, you can place the new battery inside.

★ Make sure to close the orange tab to secure it in place!

Step 3 — LCD Screen



- Remove the four 2.2 mm screws located on the bottom of the camera.

Step 4



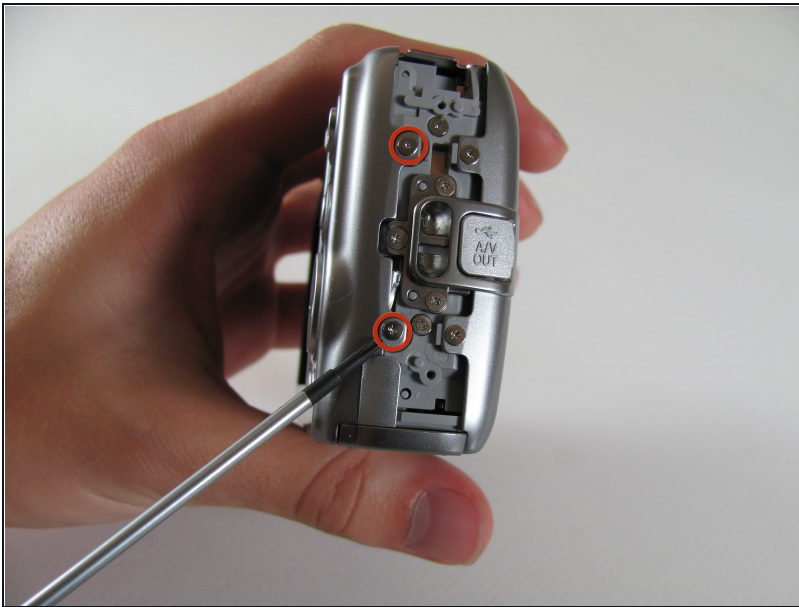
- Remove the two 2.9 mm screws from the side panel.
- Remove the side panel.

Step 5



- Remove the two 5 mm screws from the right side panel.
- Remove the panel from the right side.
- Remove the single 2.1 mm screw set underneath the panel.

Step 6



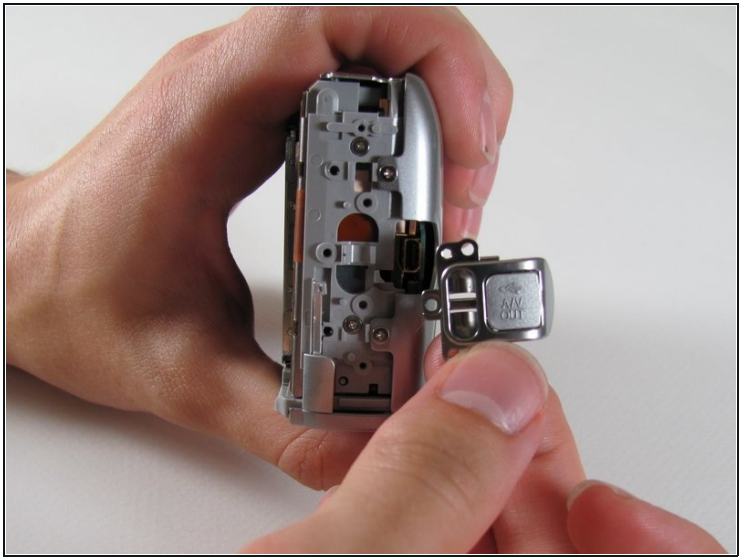
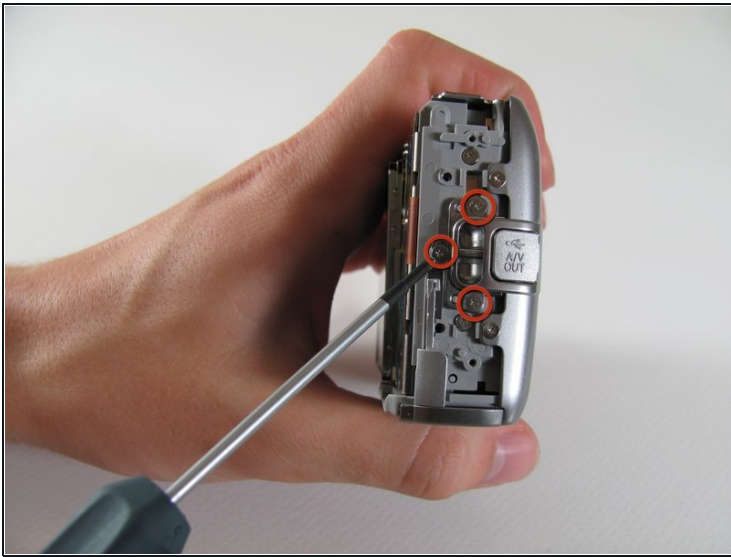
- Remove the two 4.8 mm screws attaching the back panel to the body on the left side.

Step 7



- Gently pull off the back cover.

Step 8



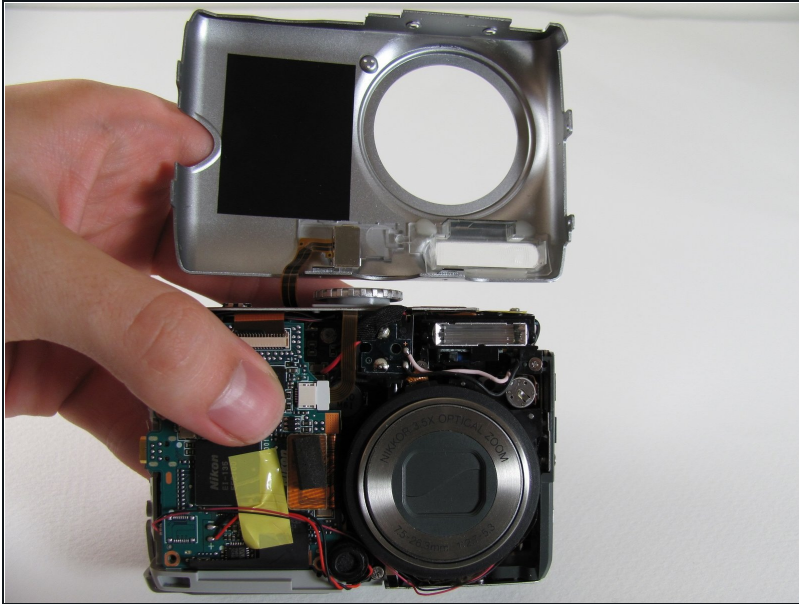
- Remove the three 4.8 mm screws from the A/V out tab on the left side.
- Remove the tab.

Step 9



- Remove the two 4.6 mm screws attaching the front panel to the body on the left side.

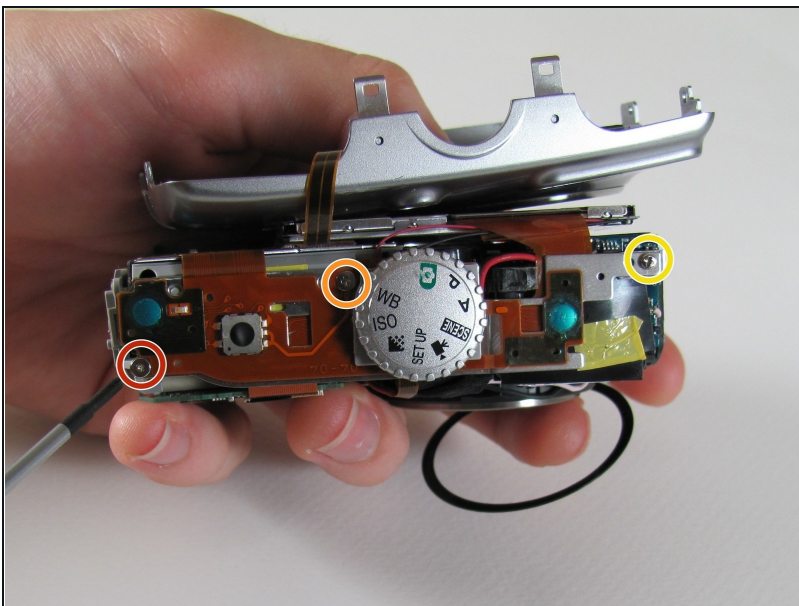
Step 10



- Flip up the front panel.

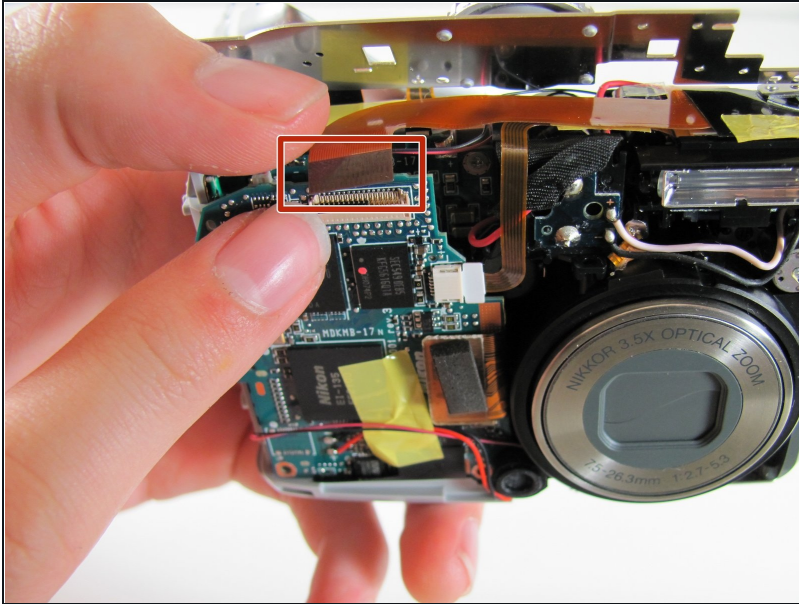
⚠ Potential for device damage.
There should be wires still
attaching the panel to the body.
**DO NOT TRY TO PULL OFF
COMPLETELY.**

Step 11



- Remove the 2.2 mm screw.
- Remove the 2.9 mm screw.
- Remove the 2.1 mm screw.

Step 12



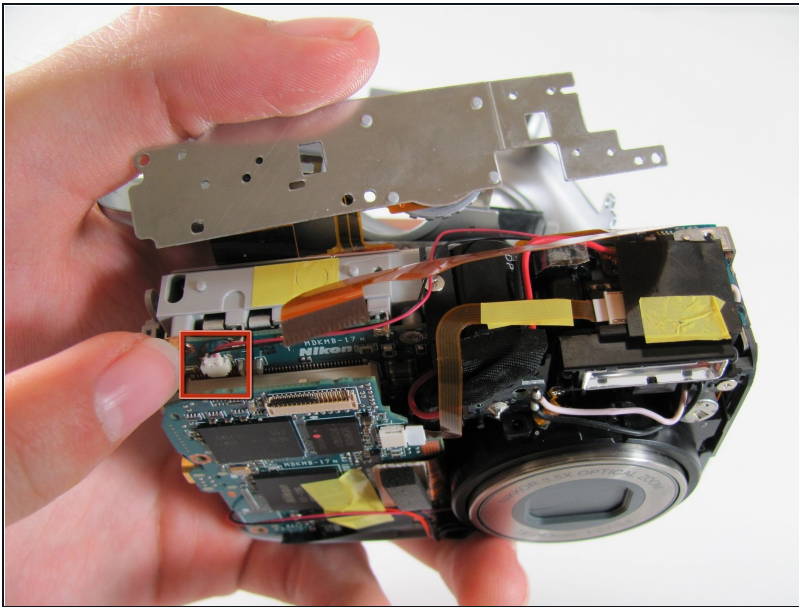
- Carefully pull the orange LCD connector up and out of the port.
- ⓘ Be careful to pull vertically while pushing the black tab upwards

Step 13



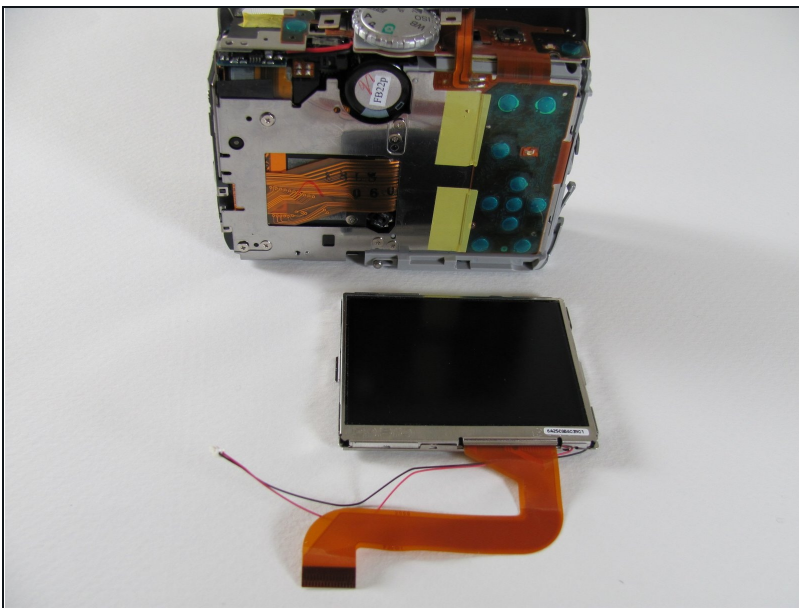
- Remove the 3.1 mm screw below the LCD.

Step 14



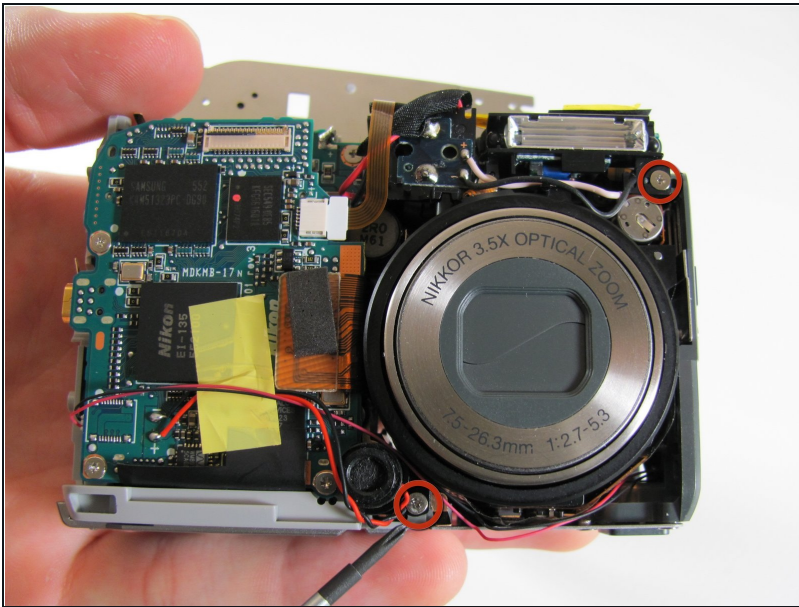
- Carefully pull out the plug connecting the LCD to the motherboard.

Step 15



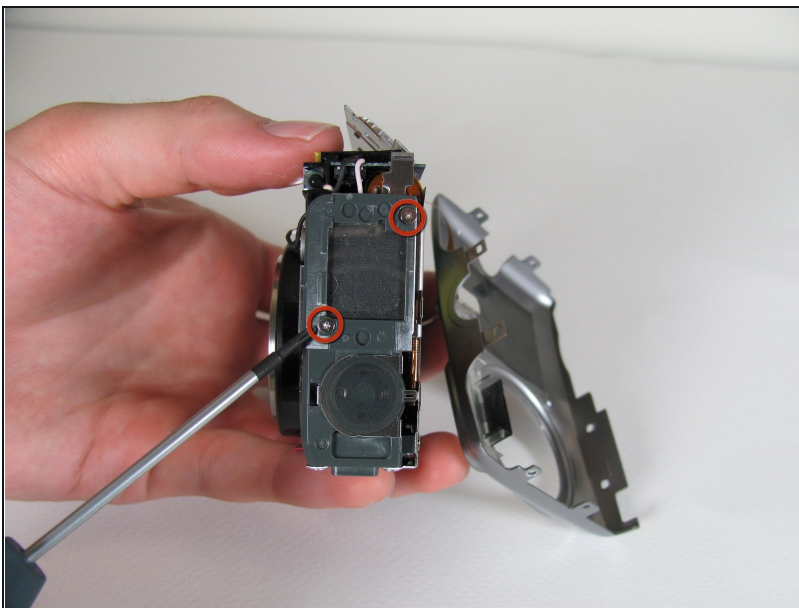
- Remove the LCD from the camera body.

Step 16 — Motherboard



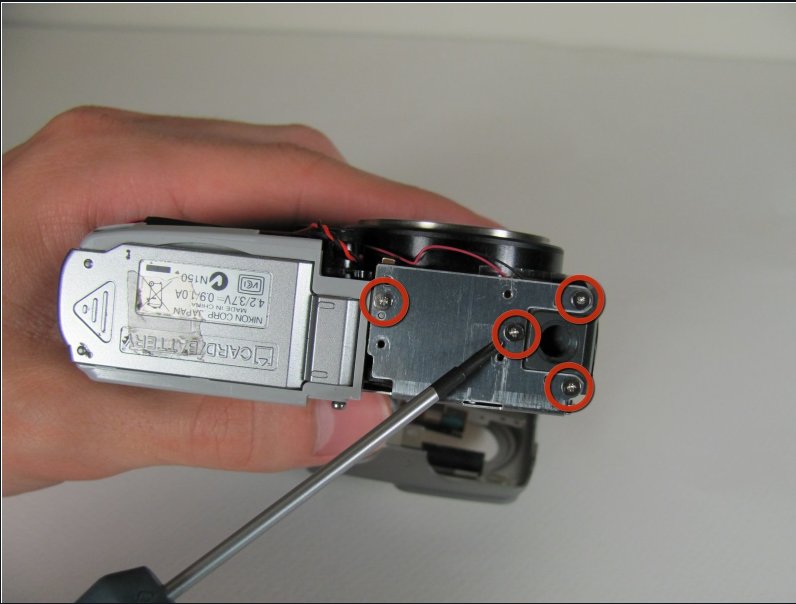
- Remove the two screws on the opposite sides of the flash.

Step 17



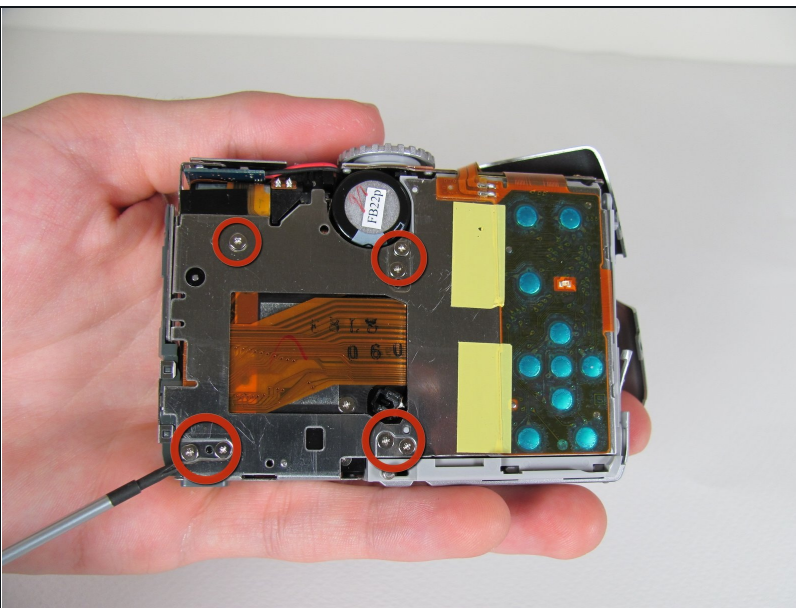
- Remove the two 2.9 mm screws on the right side of the camera.

Step 18



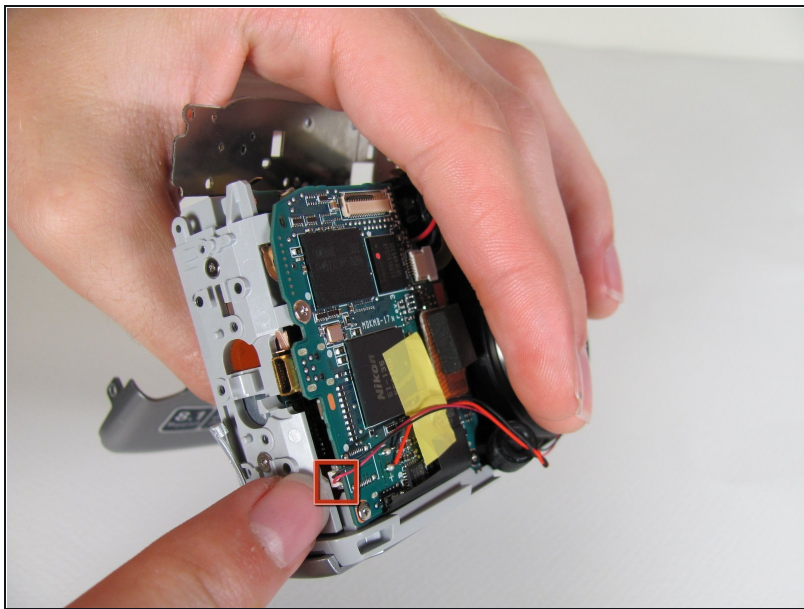
- Remove the four screws on the bottom of the camera.

Step 19



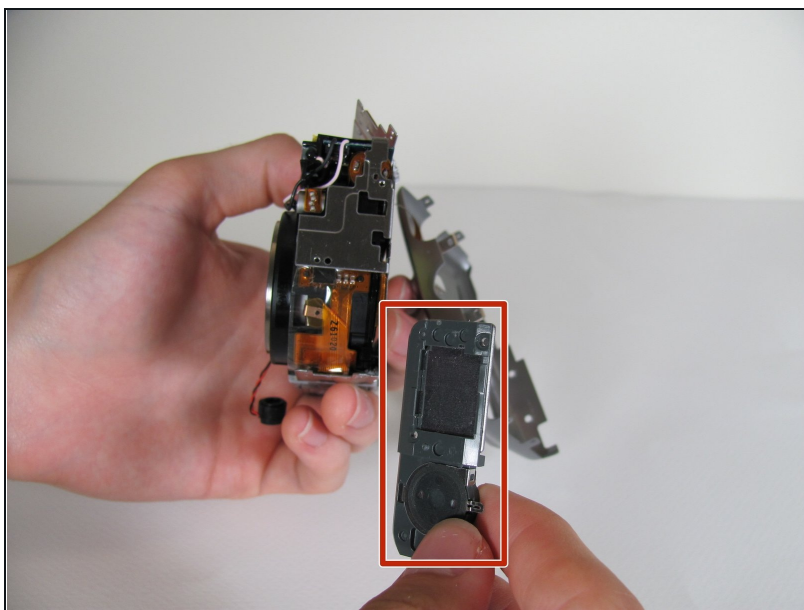
- Remove the seven 2.8 mm screws from the back of the camera.

Step 20



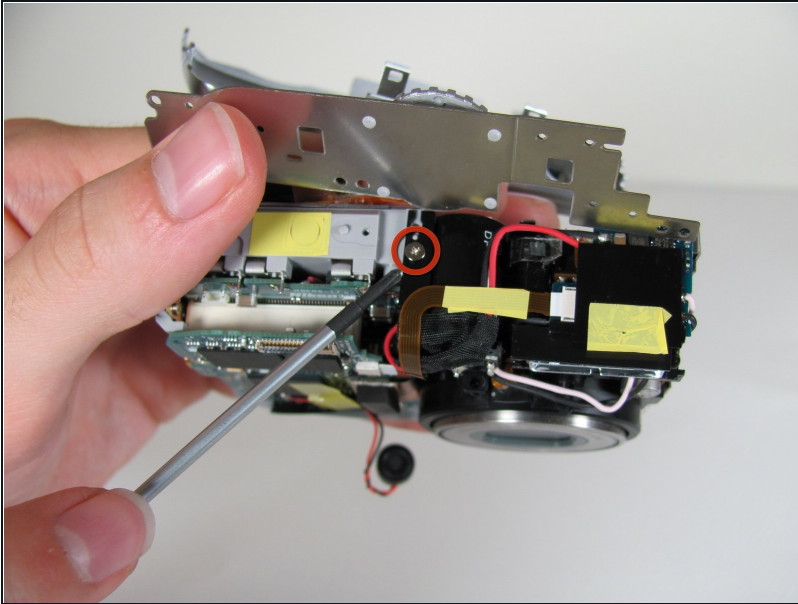
- Detach the cable that connects the lens to the left side of the motherboard.
- ① Firmly grasp the base of the cable and gently pull it from the socket.

Step 21



- Remove the right panel.

Step 22



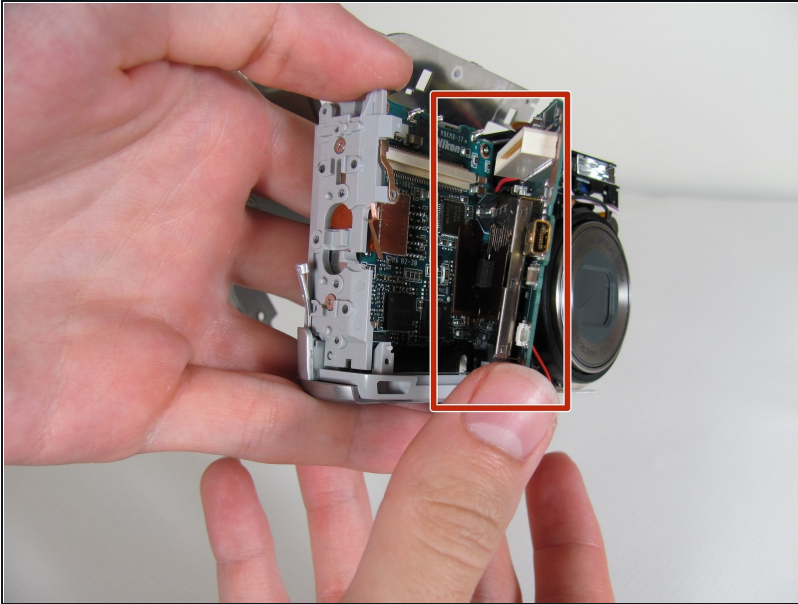
- Remove the 2.8 mm screw from the top of the camera.

Step 23



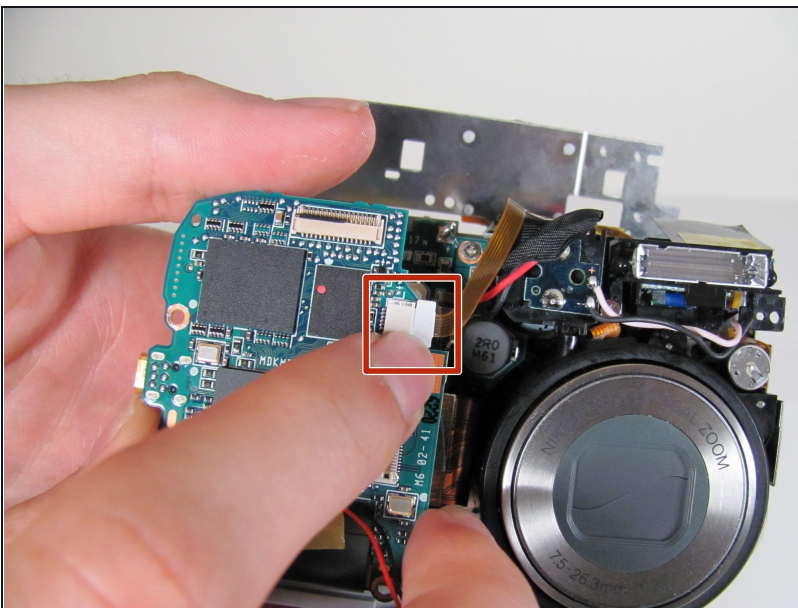
- Remove the three 2.8 mm screws from the motherboard.
- Detach the orange tab with the foam on top.
 - ⓘ It should click out of place.

Step 24



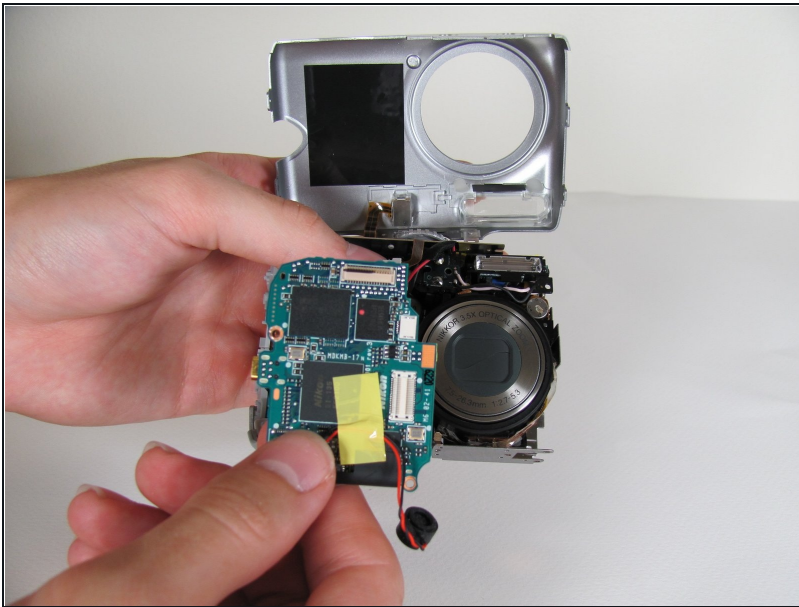
- Remove the motherboard by pulling it up and out of the port.

Step 25



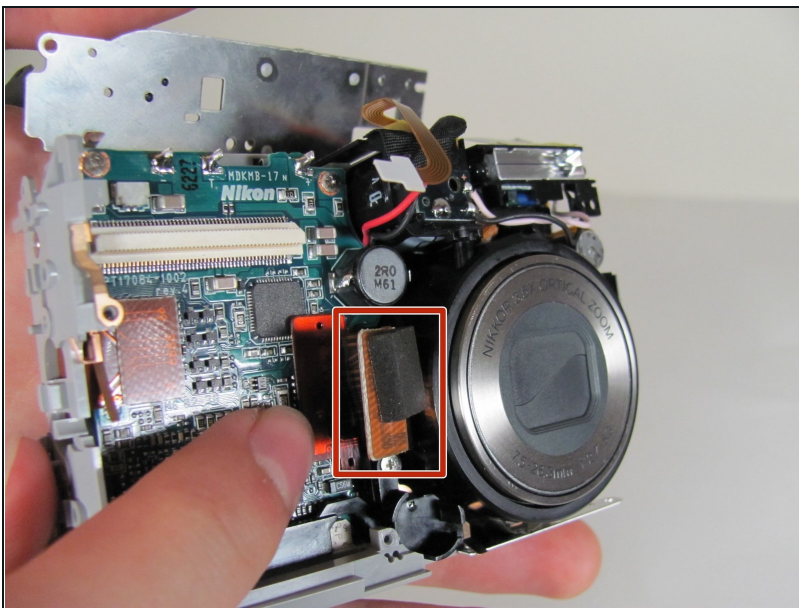
- Carefully remove the tab that connects the flash to the motherboard from the port by gently pulling the connector to the right and out of its port.

Step 26



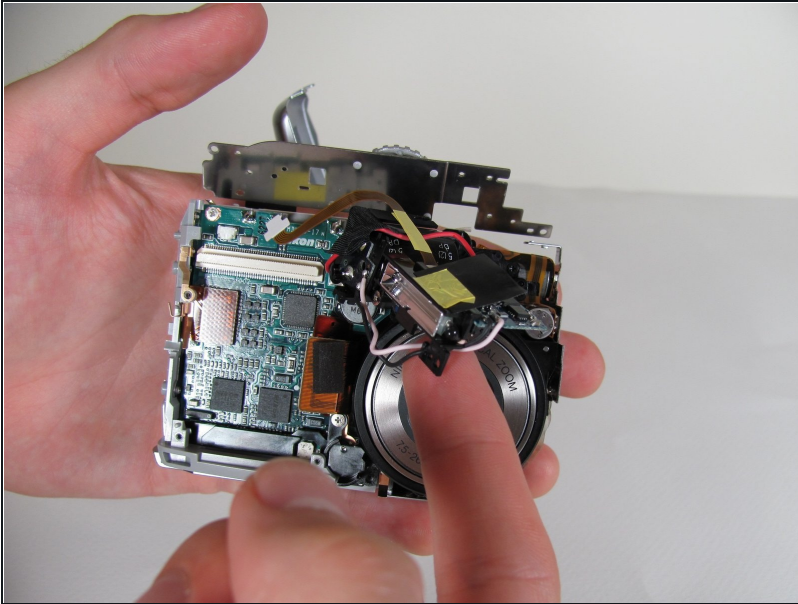
- Fully remove the motherboard from the camera body.

Step 27 — Lens



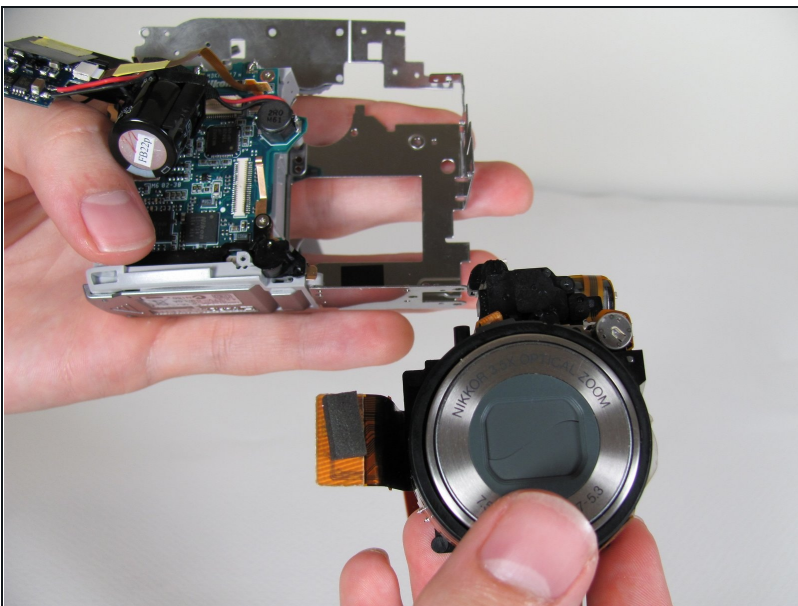
- Locate the orange plug on the right side of the lens.
- Carefully snap the plug out of place.
- ⓘ This piece is meant to snap in and out of place easily!

Step 28



- Once the orange piece detaches, gently pull up the flash unit from its place in the camera.
- ① The flash unit will still be attached to the camera by a separate cord.

Step 29



- Remove the lens from the rest of the camera.

To reassemble your device, follow these instructions in reverse order.