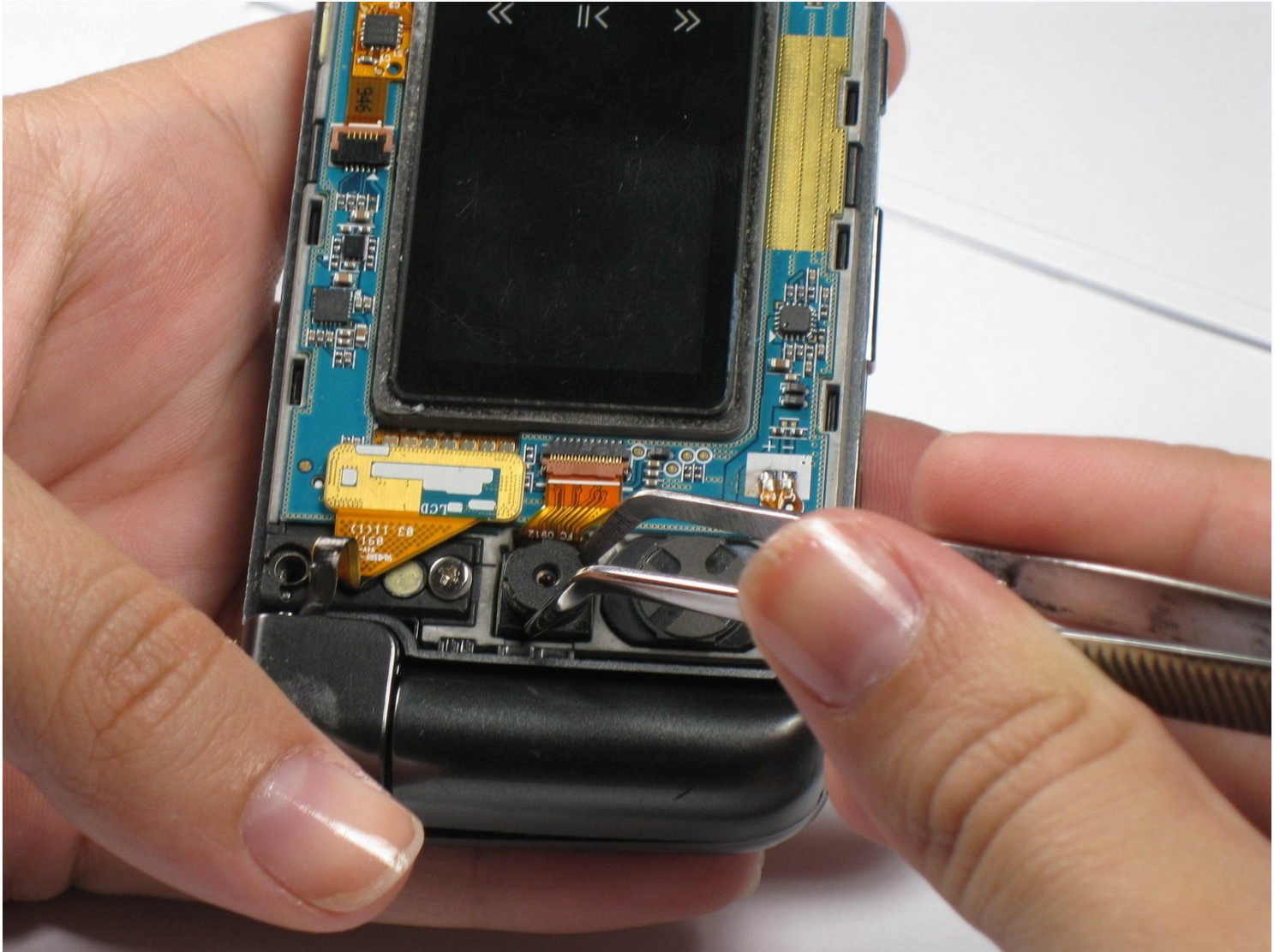




Samsung Alias 2 Camera Replacement

This guide shows you how to remove a broken...

Written By: Chris



INTRODUCTION

This guide shows you how to remove a broken camera and install a new camera.

TOOLS:

[Phillips #00 Screwdriver](#) (1)

[iFixit Opening Tool](#) (1)

[Tweezers](#) (1)

Step 1 — Battery



- Push down on the back cover of the phone, then remove the back cover.

Step 2



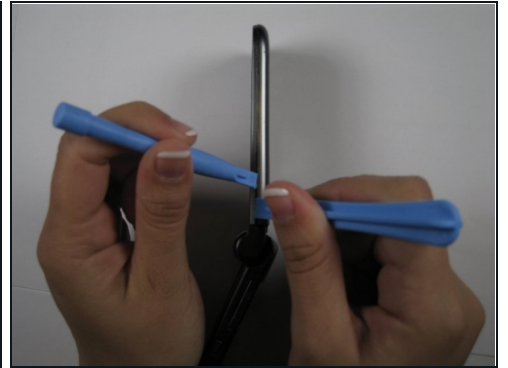
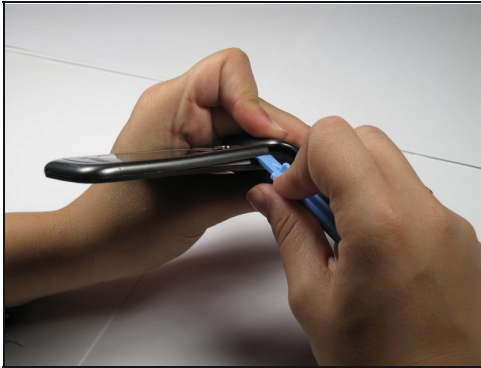
- Remove the battery.

Step 3 — Camera



- Remove the (2) 4.1 mm screws on screen.

Step 4



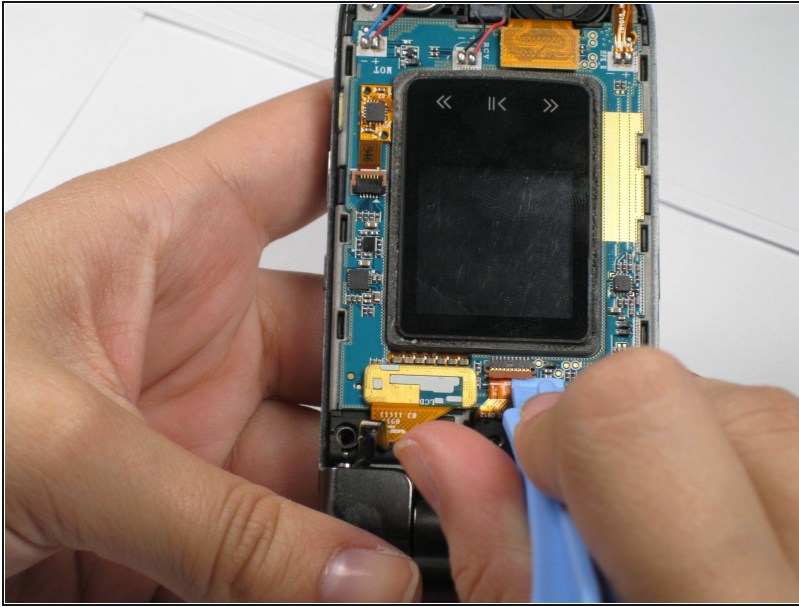
- Remove front outside casing with plastic opening tools.

Step 5



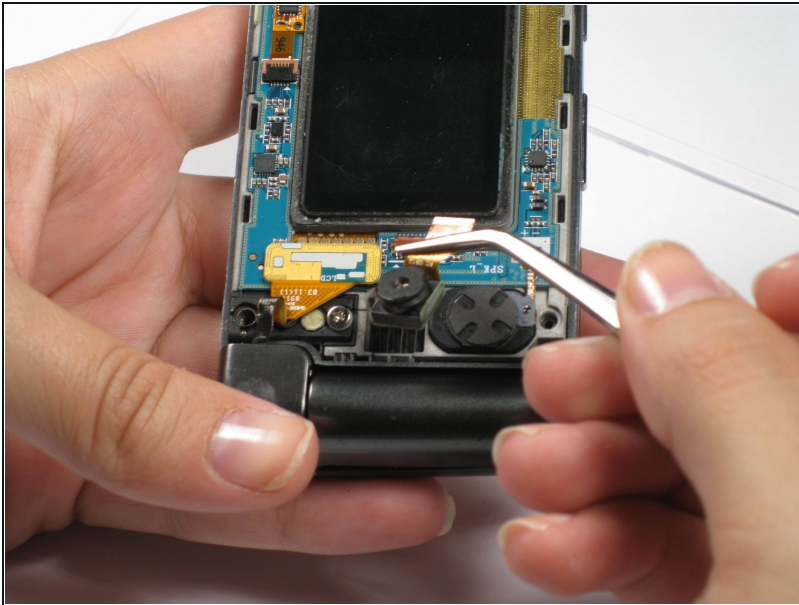
- Use [tweezers](#) to remove the camera from its holding slot.

Step 6



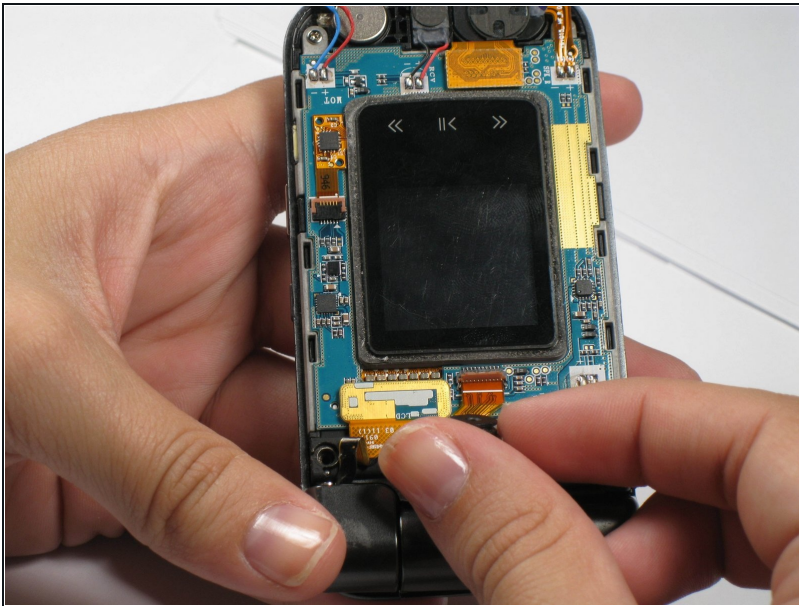
- Use a plastic opening tool to lift the tab that holds the camera ribbon in place.

Step 7



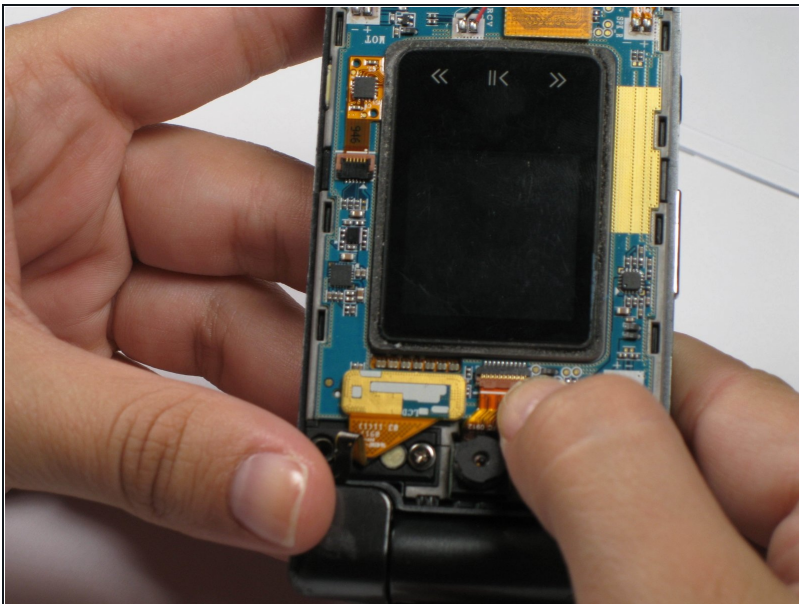
- Use tweezers to remove the camera.

Step 8



- Slide ribbon of new camera under the same tab.

Step 9



- Close the tab down onto the new camera ribbon.

Step 10



- Use tweezers to put the new camera into the camera slot that previously held the old camera.

⚠ WARNING: Do not touch the camera lens as it will easily scratch or smudge.

To reassemble your device, follow these instructions in reverse order.