



Apple Cinema Display M8149 Voltage Inverter Replacement

This guide will show you how to replace the...

Written By: Brett Murphy



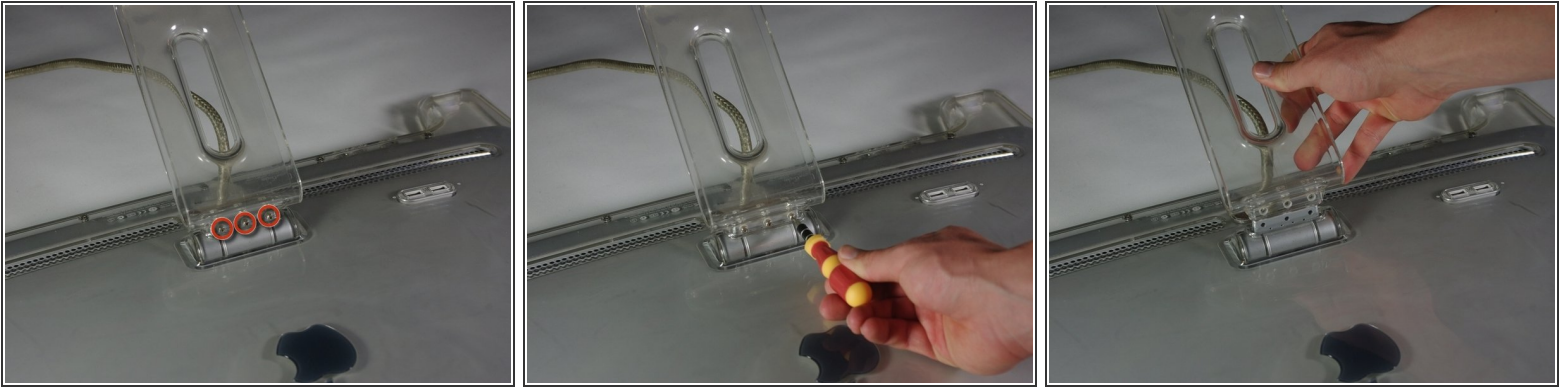
INTRODUCTION

This guide will show you how to replace the Voltage Inverter Board. The tools required for this section are the supurger and the PH 2 screwdriver.

TOOLS:

- [Phillips #2 Screwdriver](#) (1)
-

Step 1 — Control Boards



 Before starting, make sure the display is unplugged.

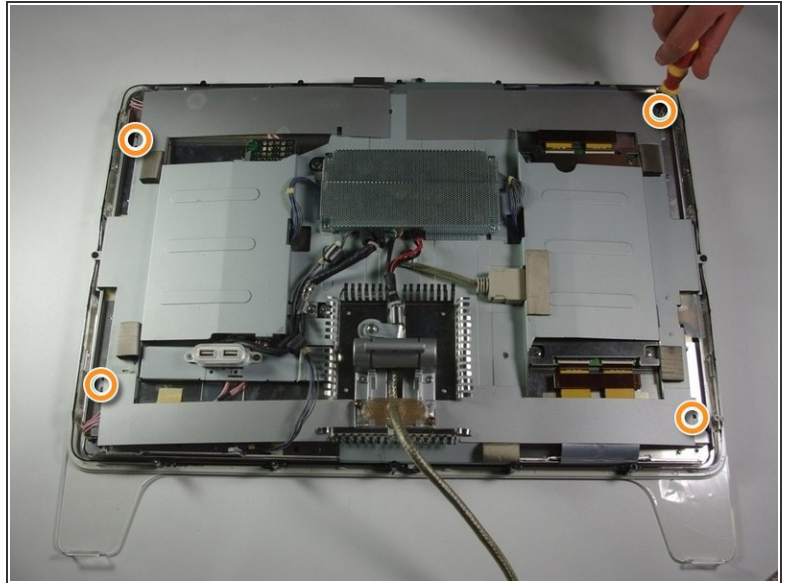
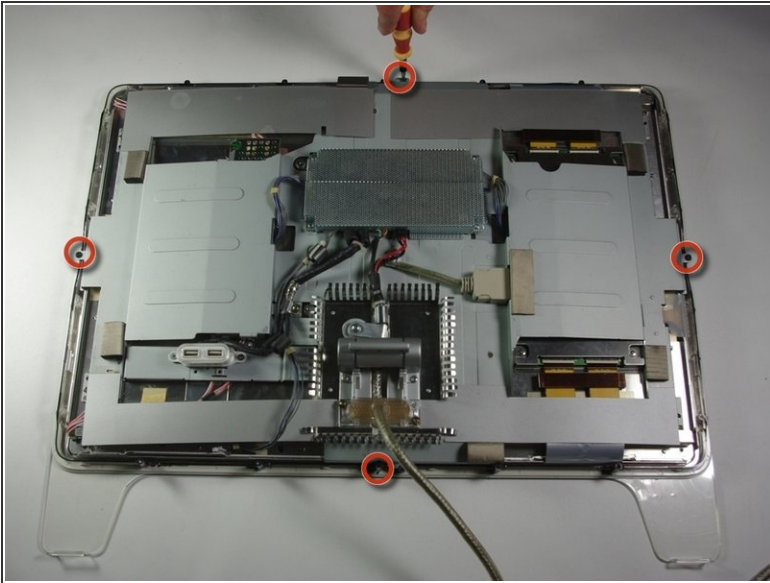
- Place the Cinema Display so that it is lying on its face and the feet are pointed away from you.
- Remove the three screws (9.52 x 4.43mm) that connect the back foot to the hinge using the Hex Key.
- Remove the back foot from the hinge mount by grabbing the foot and pulling upwards.

Step 2



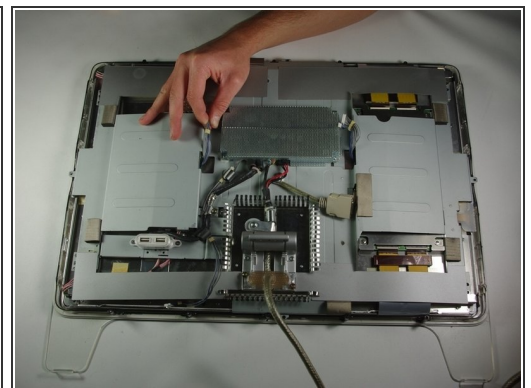
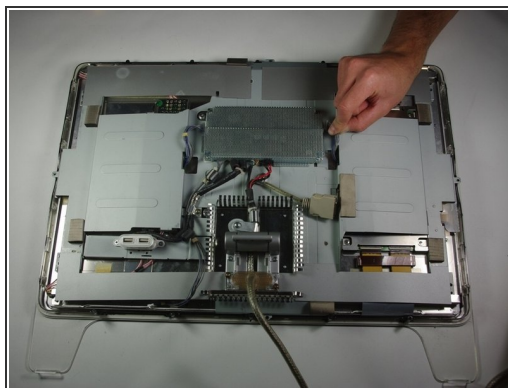
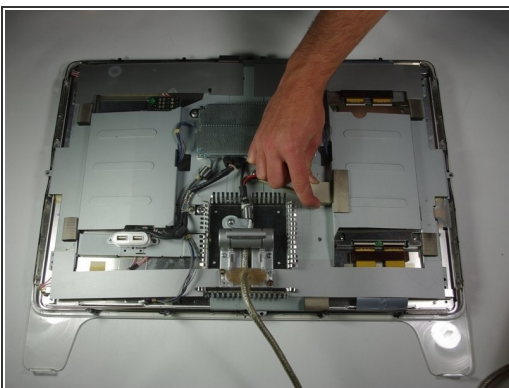
- Remove the eighteen (5.25 x 4.43 mm) screws around the edge of the backplate using the Hex key.
- Disconnect the small white connector leading to the display's Power button.
- Gently lift the backplate off of the display. Completely remove the backplate and set it aside.

Step 3



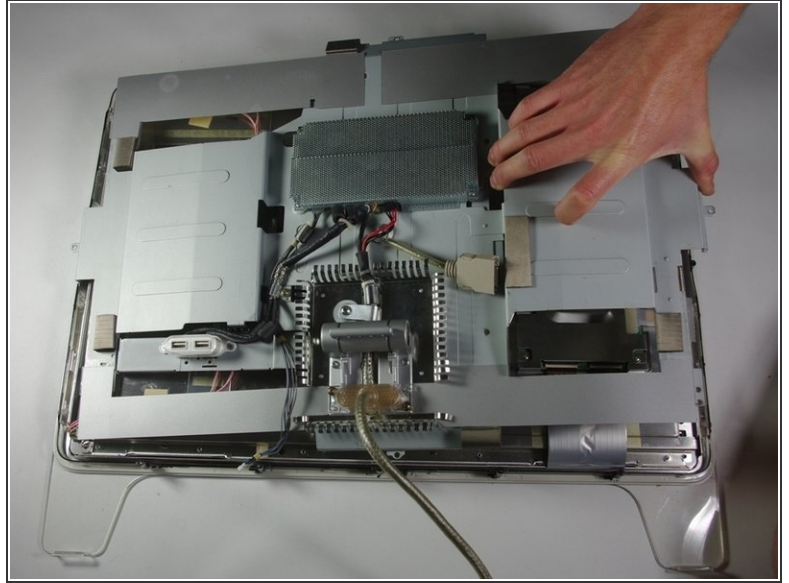
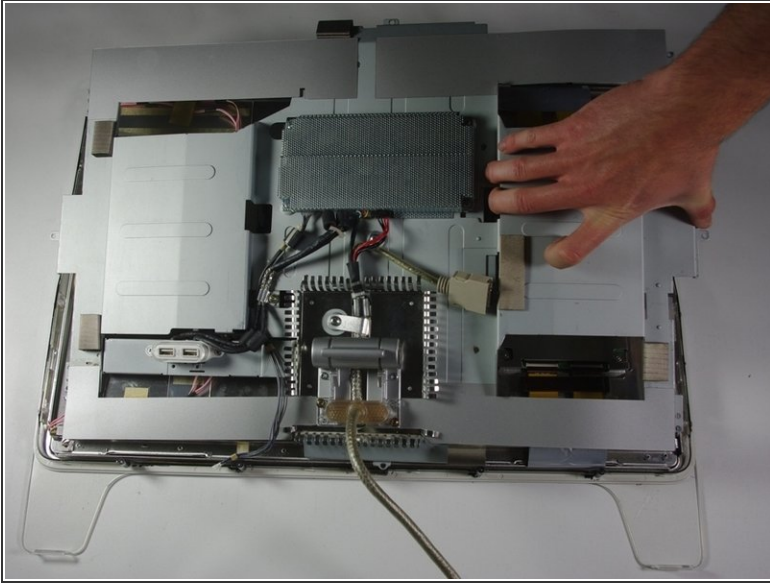
- Use a Phillips #2 screwdriver to remove the four (9.52 x 3.43 mm) screws on the outer rim of the metal cover.
- Next, remove the four cover (11.91 x 2.89 mm) screws located at the corners of the metal cover using the Phillips #2 screwdriver.

Step 4



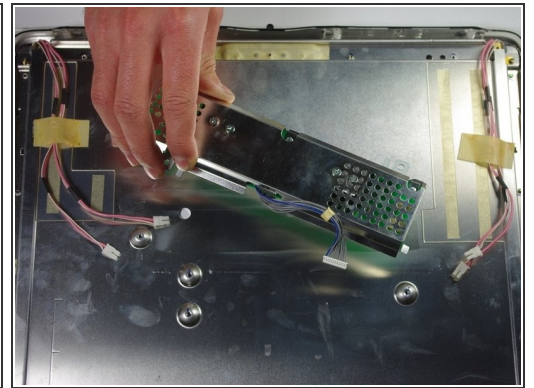
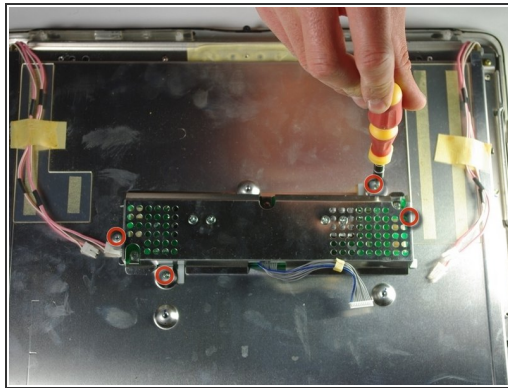
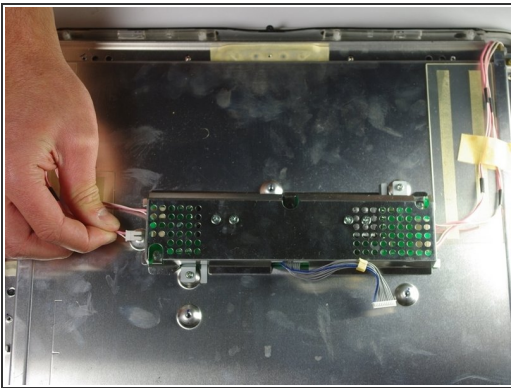
- Unplug the large brown plug in the center-right, that connects the control board to the rest of the display.
- Unplug the blue and gray plug on the right side of the control board. Repeat with the left side.

Step 5



- Gently lift the large metal cover which spans across the back of the whole display.

Step 6 — Voltage Inverter



- Turn your attention to the left side of the cinema display.
- Using your fingers, unplug the small white plugs with pink wires from the top and bottom of the circuit board.
- Using the PH 2 screw driver, remove the four screws (6.9 x 2.55 mm) holding down the circuit board.
- Remove the circuit board by gently lifting it from the display.

To reassemble your device, follow these instructions in reverse order.