



Fujitsu Siemens Esprimo Mobile v5515 CMOS

Battery Replacement

Fairly easy task on this particular model. Only things you need are a small philips screwdriver (PH1 or PH2), a small flathead screwdriver (2mm) and a new CR2032 battery.

Written By: Nicola Nascimento



INTRODUCTION

Fairly easy task on this particular model. Only things you need are a small philips screwdriver (PH1 or PH2), a small flathead screwdriver (2mm) and a new CR2032 battery.



TOOLS:

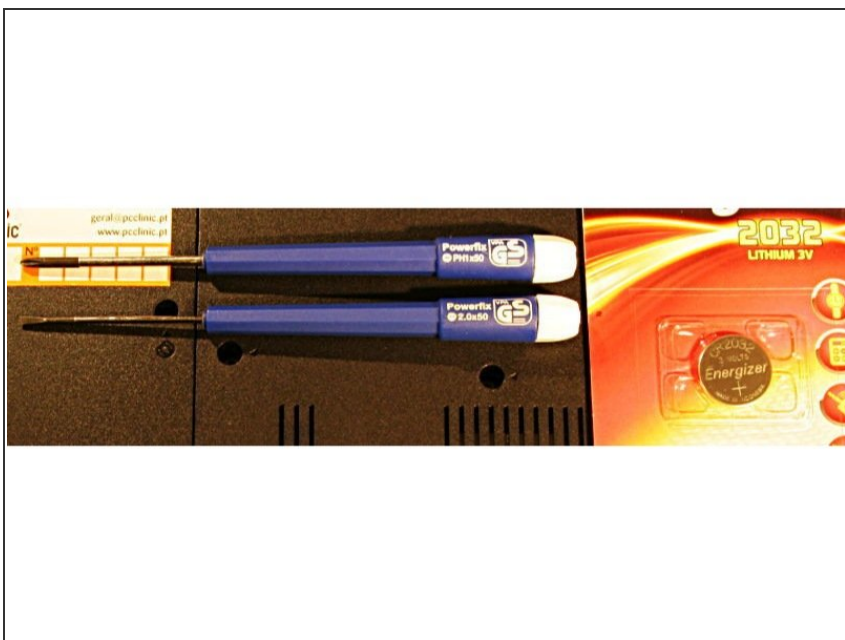
- [Phillips #1 Screwdriver](#) (1)



PARTS:

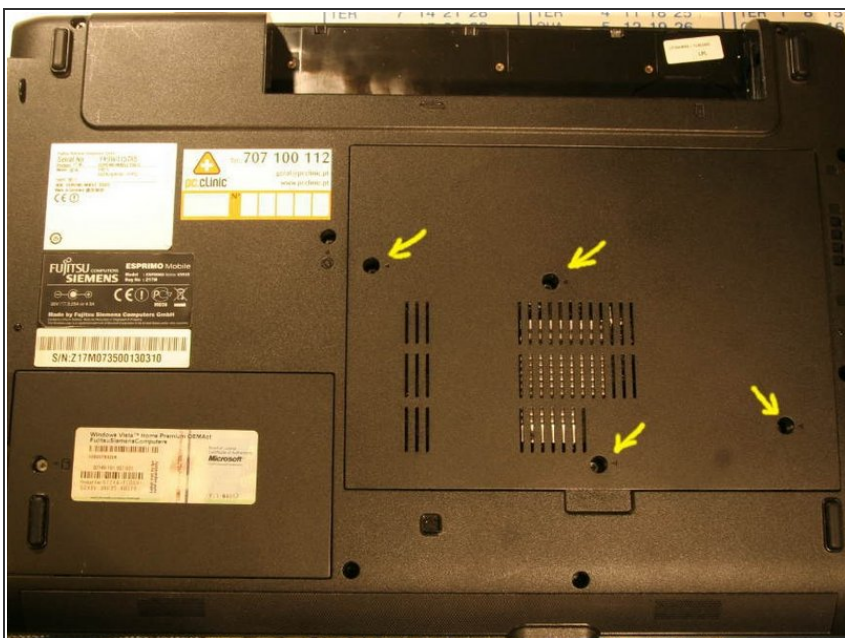
- [CR2032 Lithium Battery](#) (1)

Step 1 — CMOS Battery



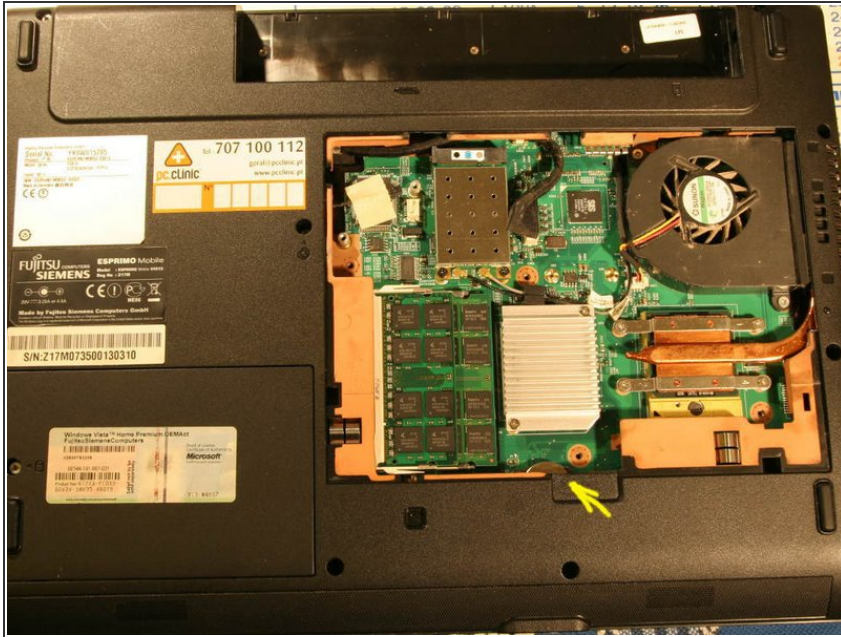
- Turn the laptop upside down and prepare the tools needed and the battery.

Step 2



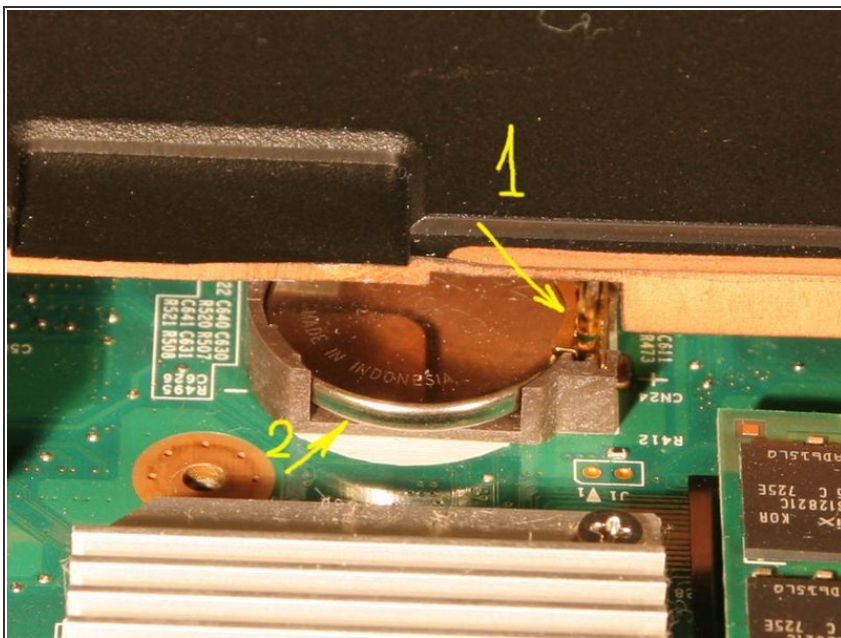
- Remove the 4 philips screws that secure the back cover.

Step 3



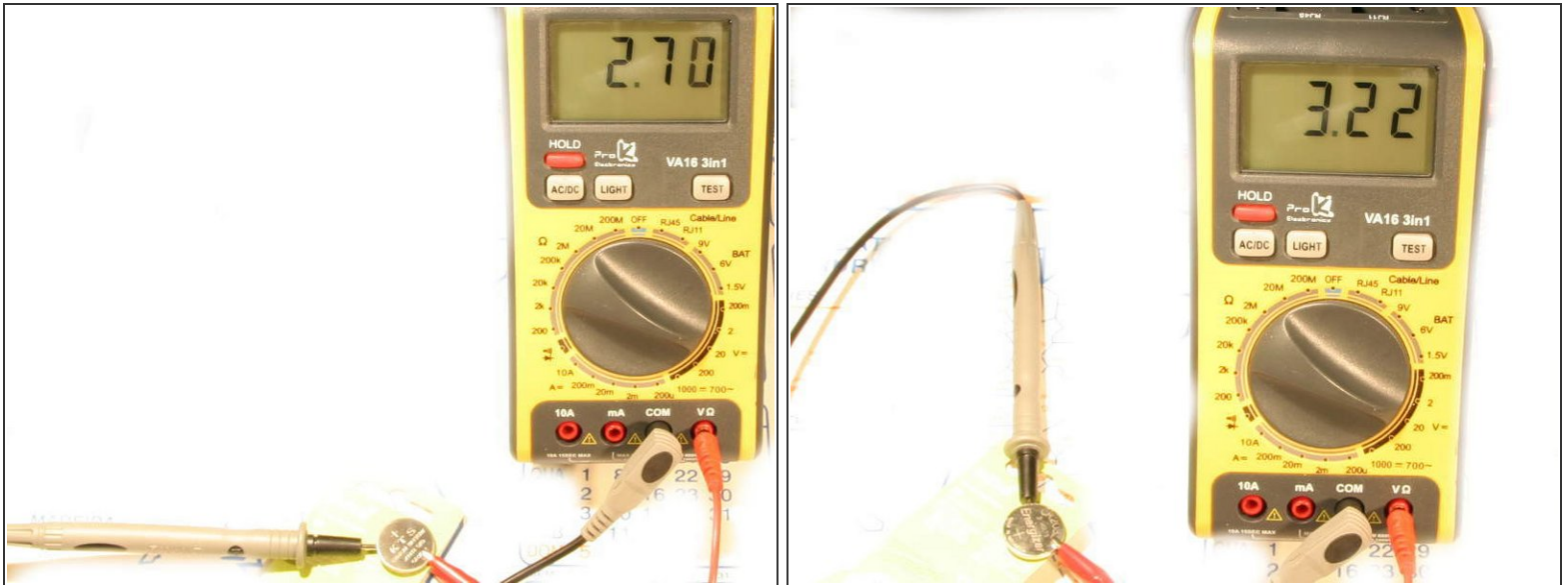
- With the cover removed, we can see the battery.

Step 4



- Turn the laptop around so you can see and access the battery. Release the battery with the flat screwdriver (1), then gently push it upward (2). Be careful not to let it slip into the laptop case or you will have to disassemble it completely.

Step 5



- If you have a multimeter, check the old battery. A good one should read 3 V or higher. A fresh one reads 3.2 V or more.
- In this case, the old was really bad, at only 2.7 V.
- The replacement one is good, 3.22 V.

To reassemble your device, follow these instructions in reverse order.