



# Microsoft Lumia 435 LCD Display Replacement

Microsoft Lumia 435 LCD Display Replacement

Written By: ZFix



# INTRODUCTION

How to disassemble Microsoft Lumia 435 and change / replace the broken LCD Display.

[video: <https://www.youtube.com/watch?v=clB1BsoegqQ>]



## TOOLS:

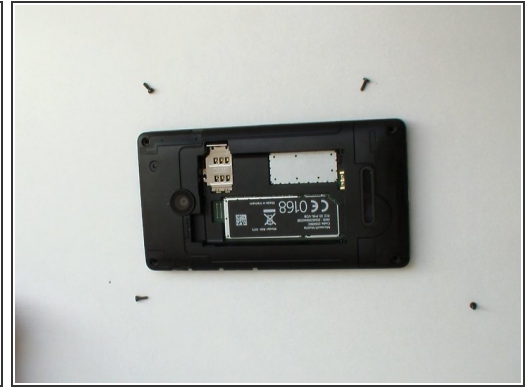
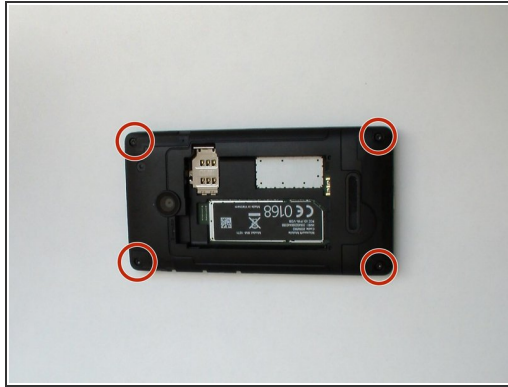
- [iFixit Opening Picks set of 6](#) (1)
- [T6 Torx Screwdriver](#) (1)
- [Tweezers](#) (1)
- [Heat Gun](#) (1)



## PARTS:

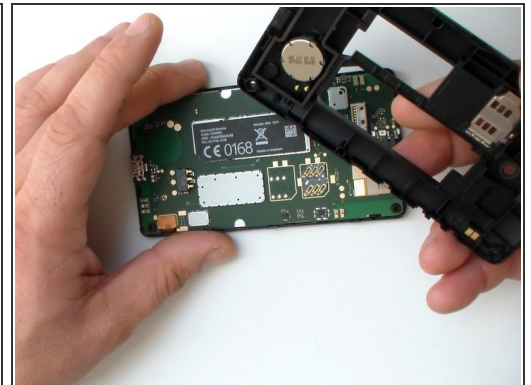
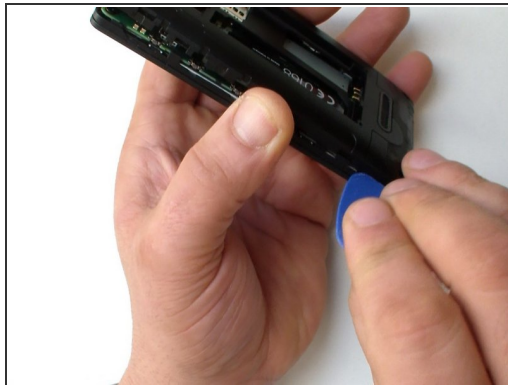
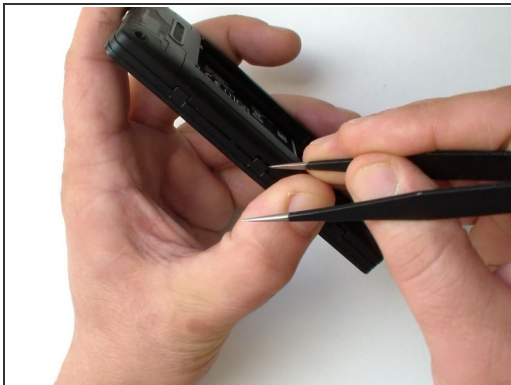
- [Microsoft Lumia 435 LCD Display](#) (1)

## Step 1 — Back Cover



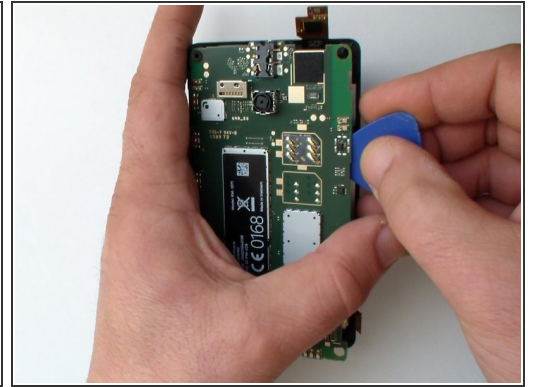
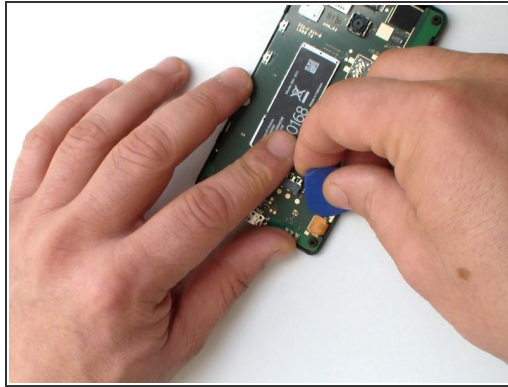
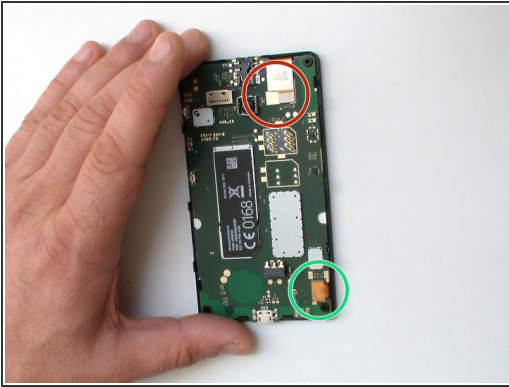
- Switch off the phone.
- Remove the battery and any inserted SIM and memory cards.
- Use a screwdriver Torx T6 and remove the 4x black screws.

## Step 2



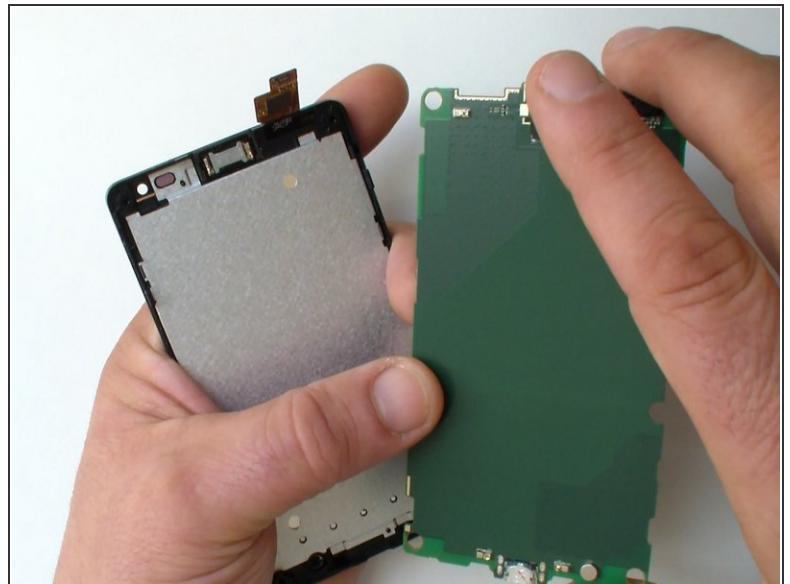
- There are several plastic locking clips hold the back cover to the frame.
- Use a tool with a sharp edge to unlock them and a plastic tool to separate the back cover.

## Step 3 — Logic board



- Unhook:
  - the touch screen flex cable
  - the LCD Display flex cable
- Use a plastic tool lift up and remove the Logic board.

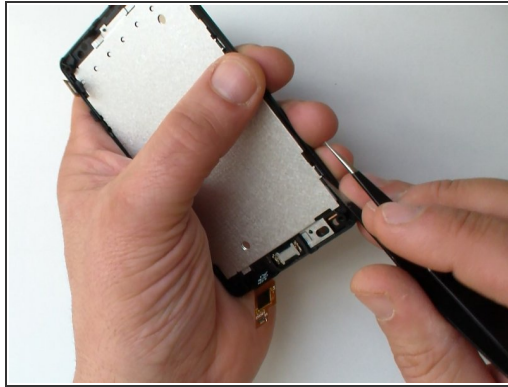
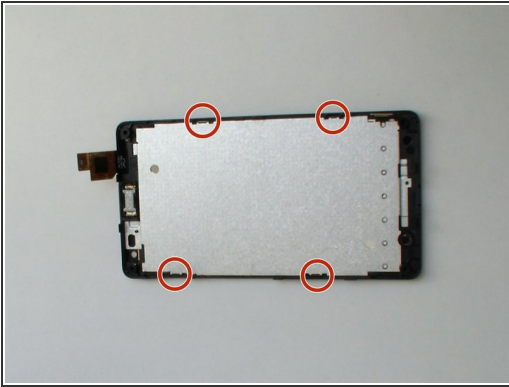
## Step 4



- This is the logic board / main board - a front and rear view.

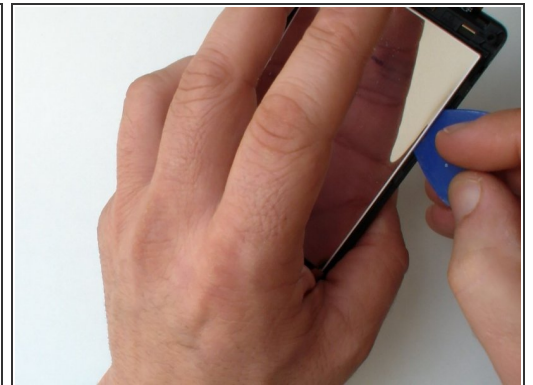
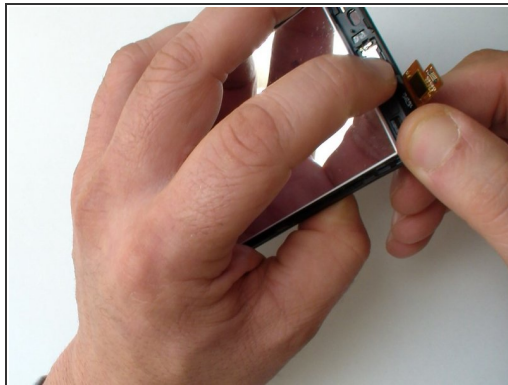


## Step 5 — LCD Display



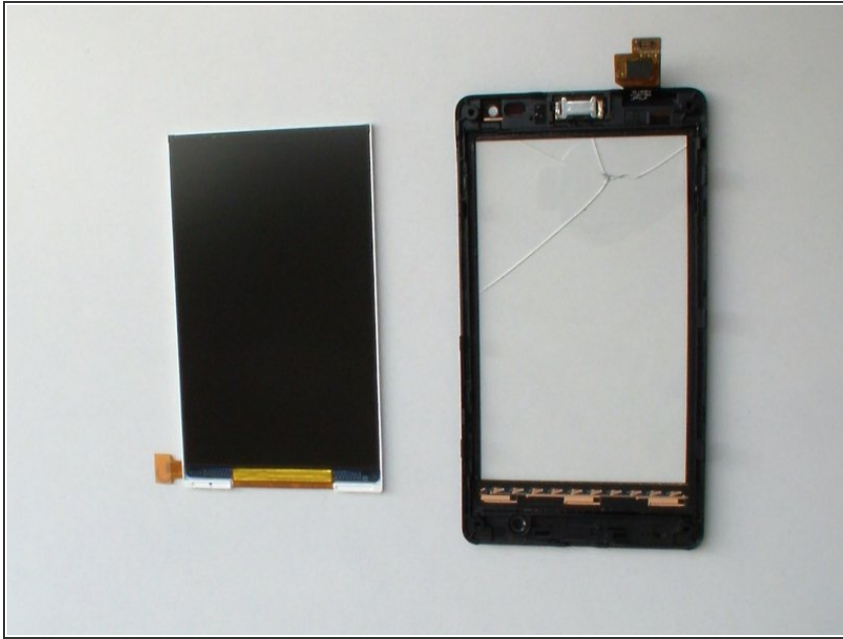
- The Display metal shield is locked to the frame by 4x locking clips.
- Use a tool with a sharp tip and carefully unlock them and remove the shield.

## Step 6



- The display is stuck to the touch screen glass with a double-sided adhesive tape.
- Use a hair dryer or hot air gun and warm the glass to make the adhesive softer.
- ⚠ Distort the frame a little and use a thin plastic tool to separate the display from the frame.

## Step 7



- The display is very fragile, do the separation very carefully.

To reassemble your device, follow these instructions in reverse order.