



Nokia Lumia 520 Battery Replacement

This is a guide to help you replace your phone's battery.

Written By: Kobina Faibille



INTRODUCTION

Battery draining quickly? It may be time for a new one. Use this guide to help you replace your phone's battery.



TOOLS:

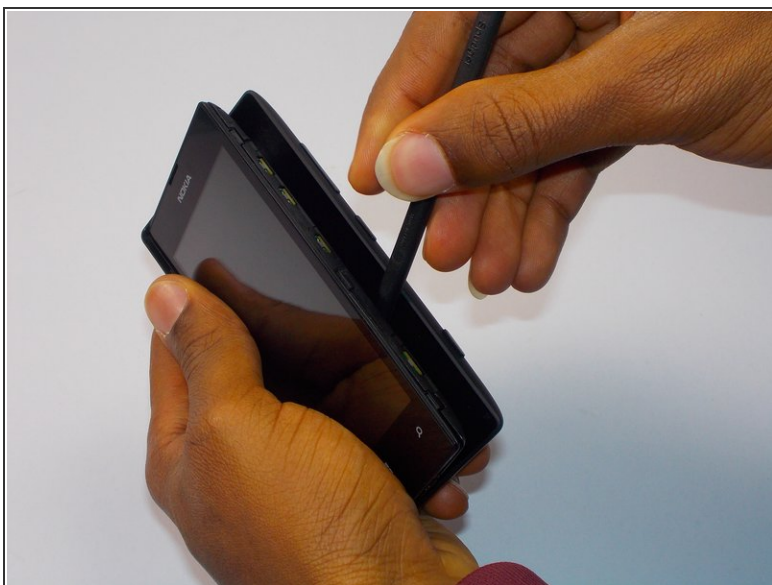
- [Spudger](#) (1)
-

Step 1 — Battery



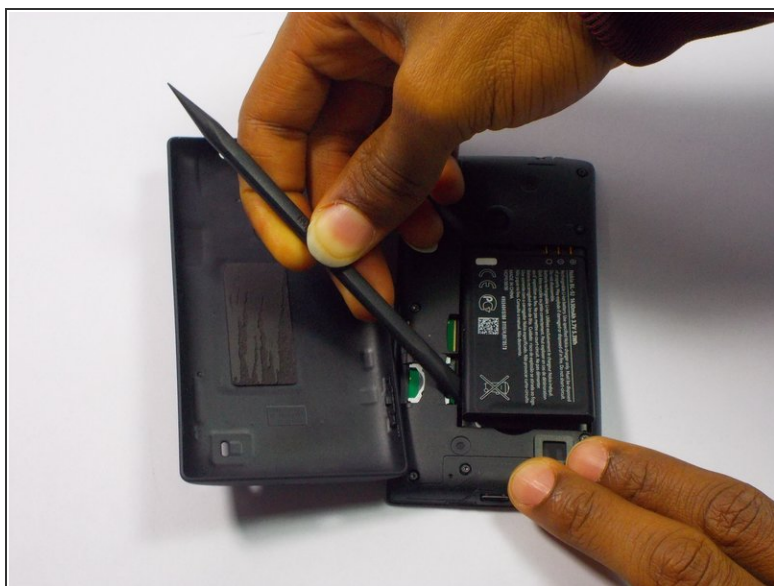
- Insert the spudger into the crevice located between the back cover of the phone and the body of the phone.

Step 2



- Lift the spudger gently to open the back cover of the phone.

Step 3



- Insert the spudger into the space between the batter and the battery holder to remove the battery.

To reassemble your device, follow these instructions in reverse order.