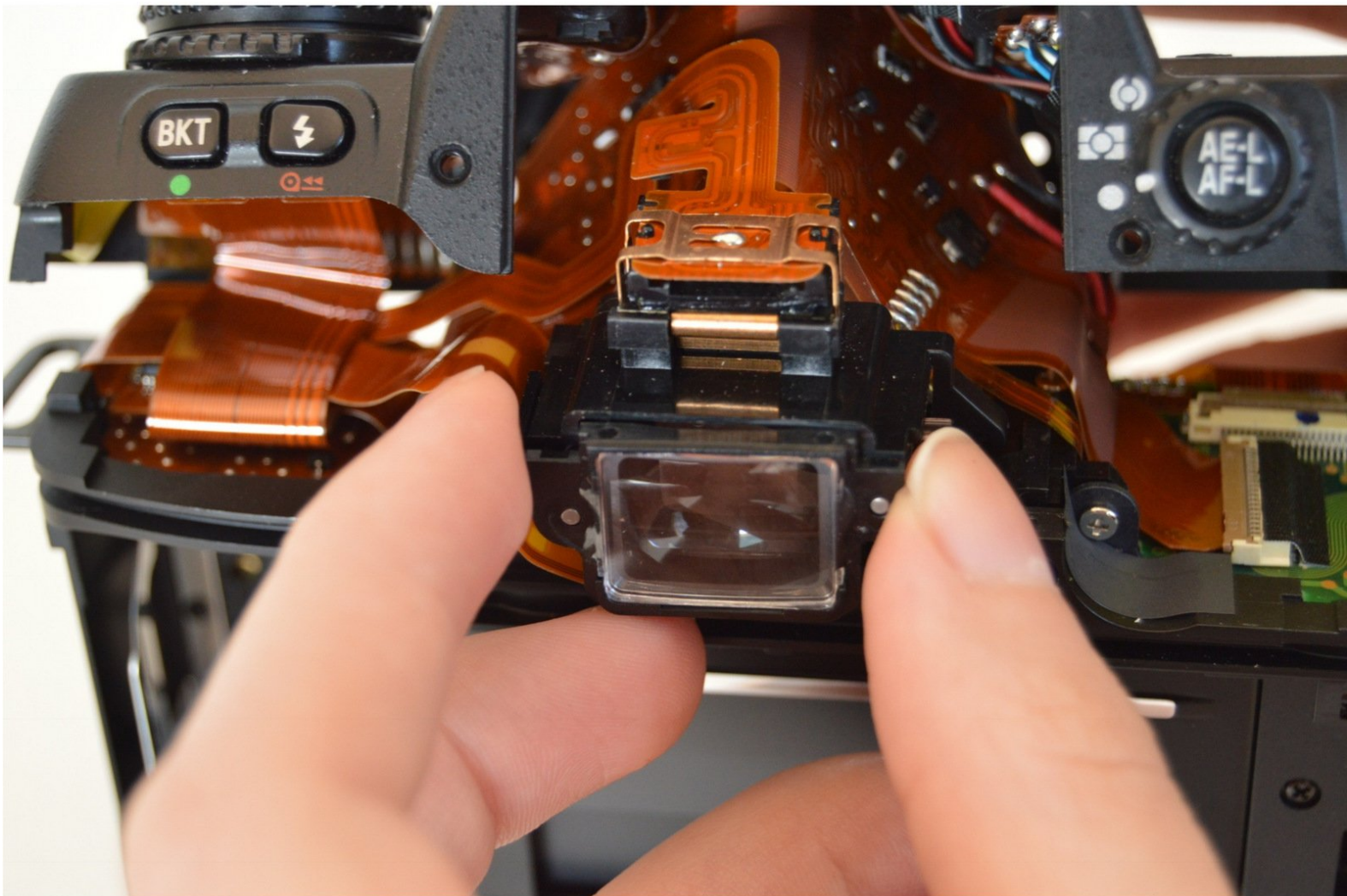




# Nikon N80 Viewfinder Replacement

This is a guide for replacing the viewfinder in your Nikon N80 Camera.

Written By: Maegan Vloria



---

## INTRODUCTION

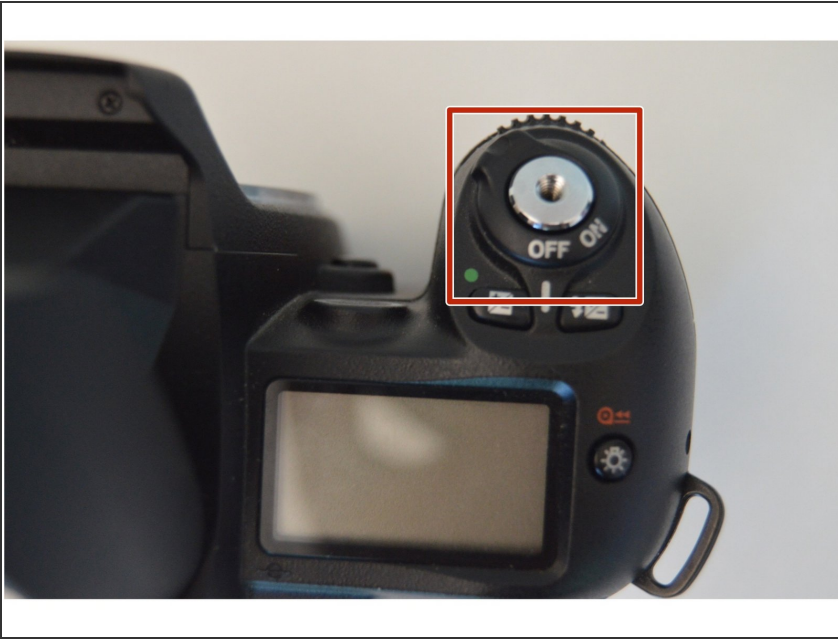
Is the viewfinder of your camera cracked or broken? Instead of just discarding an otherwise good camera, you can replace the viewfinder. This guide will explain how to replace the viewfinder in a Nikon N80/F80 Camera.



### TOOLS:

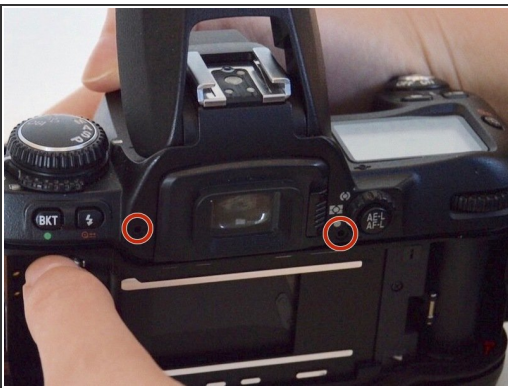
- [Phillips #00 Screwdriver](#) (1)
-

## Step 1 — Viewfinder



- Make sure the On/Off switch is in the Off position.

## Step 2



- Remove the four 4.8mm screws on the top section of the camera using a PH00 Phillips screwdriver.

**i** Two are located by the viewfinder and the other two are on each side of the camera.

### Step 3



- Rotate the camera so the bottom plate is accessible.
- Remove the seven 4.8mm screws on the bottom plate of the camera using a PH00 Phillips screwdriver.
- Separate the bottom plate.

### Step 4



- Remove the five silver 4.8mm screws on the lens mount using a PH00 Phillips screwdriver.
- Extract the lens mount.

## Step 5



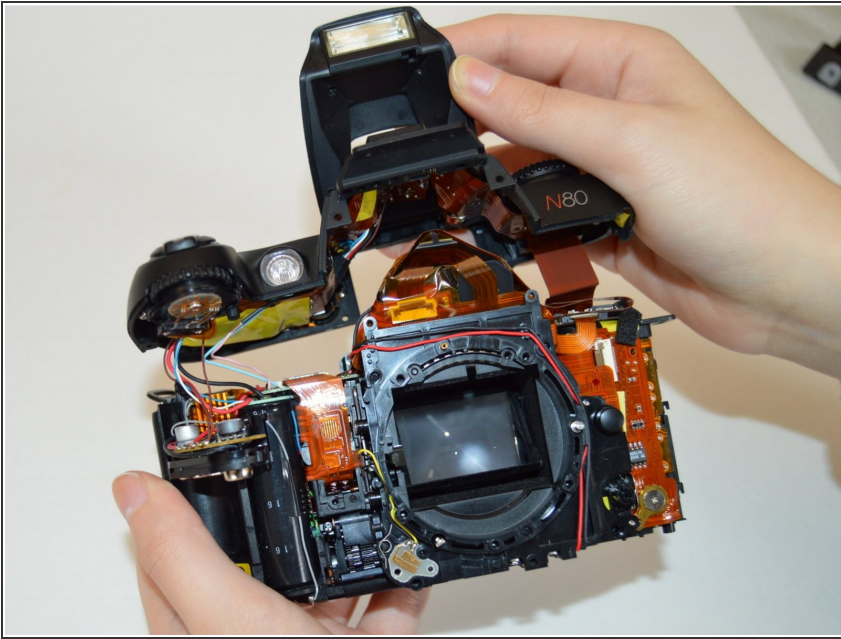
- Remove the seven 4.8mm screws on front camera plate using a PH00 Phillips screwdriver.
- ⓘ One is located on the battery chamber side of the camera, two are next to the film door release lever, two are located below the "Nikon" logo, and the last two are located above the "Nikon" logo in the Speedlight compartment.

## Step 6



- Separate the three front camera plates from the camera.

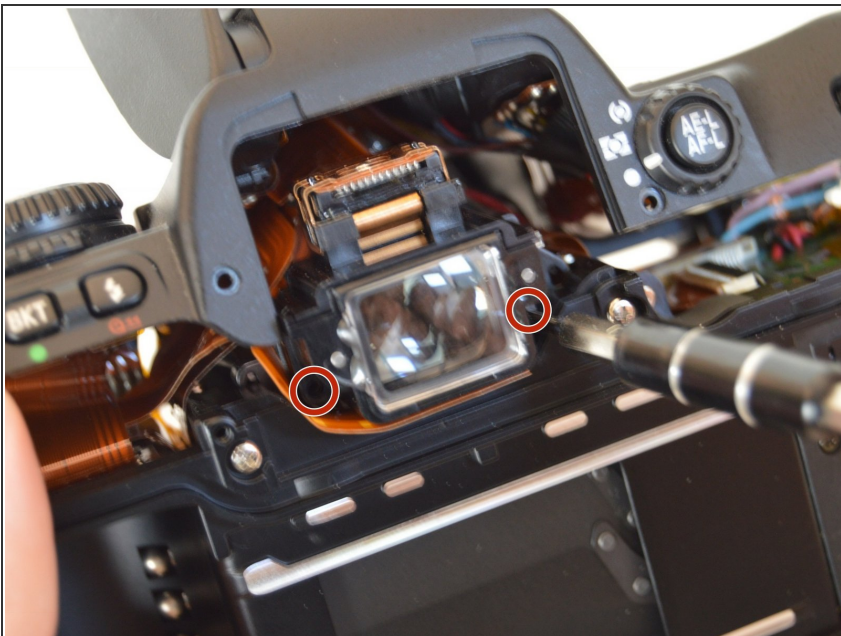
## Step 7



- Gently disconnect the top section of the camera from the body.

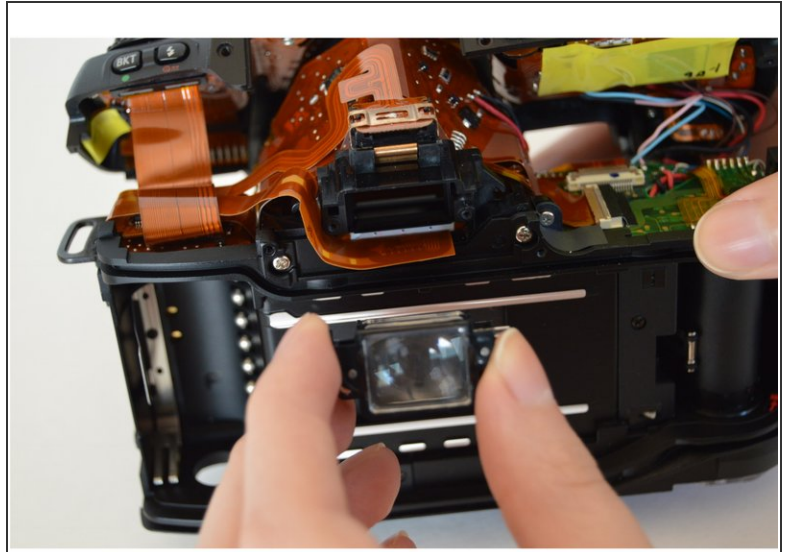
⚠ Don't pull the top section off too hard or the wire and ribbon within the camera may disconnect.

## Step 8



- Remove the two 4.8mm screws next to the viewfinder with a PH00 Phillips screwdriver.

## Step 9



- Pull out the viewfinder gently.

To reassemble your device, follow these instructions in reverse order.