



Hamilton Beach 70740 Base Removal

This guide will show you how to remove the base of your food processor.

Written By: David Gedeon



INTRODUCTION

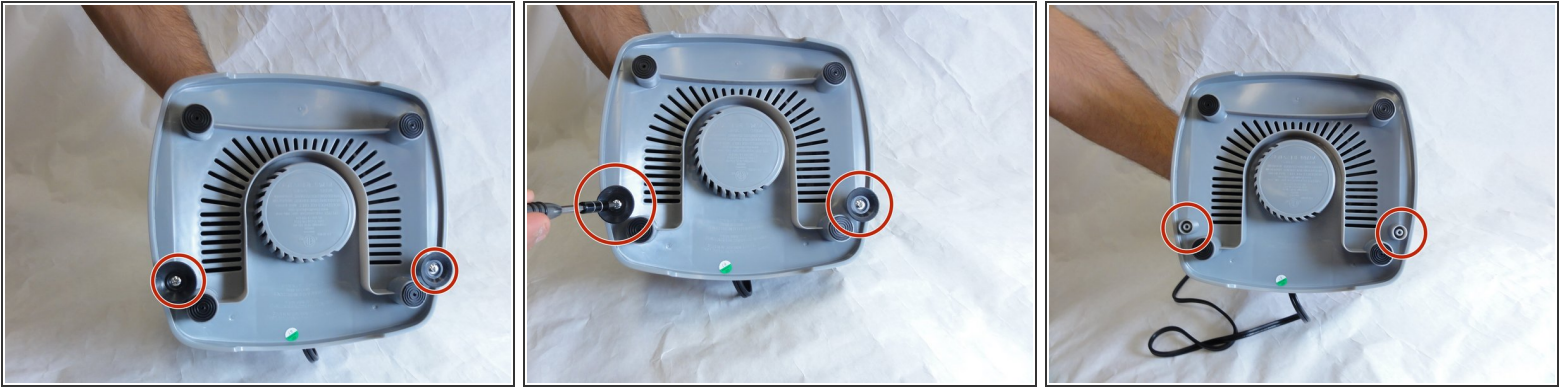
Removing the base of your food processor is necessary for additional repairs and cleaning.



TOOLS:

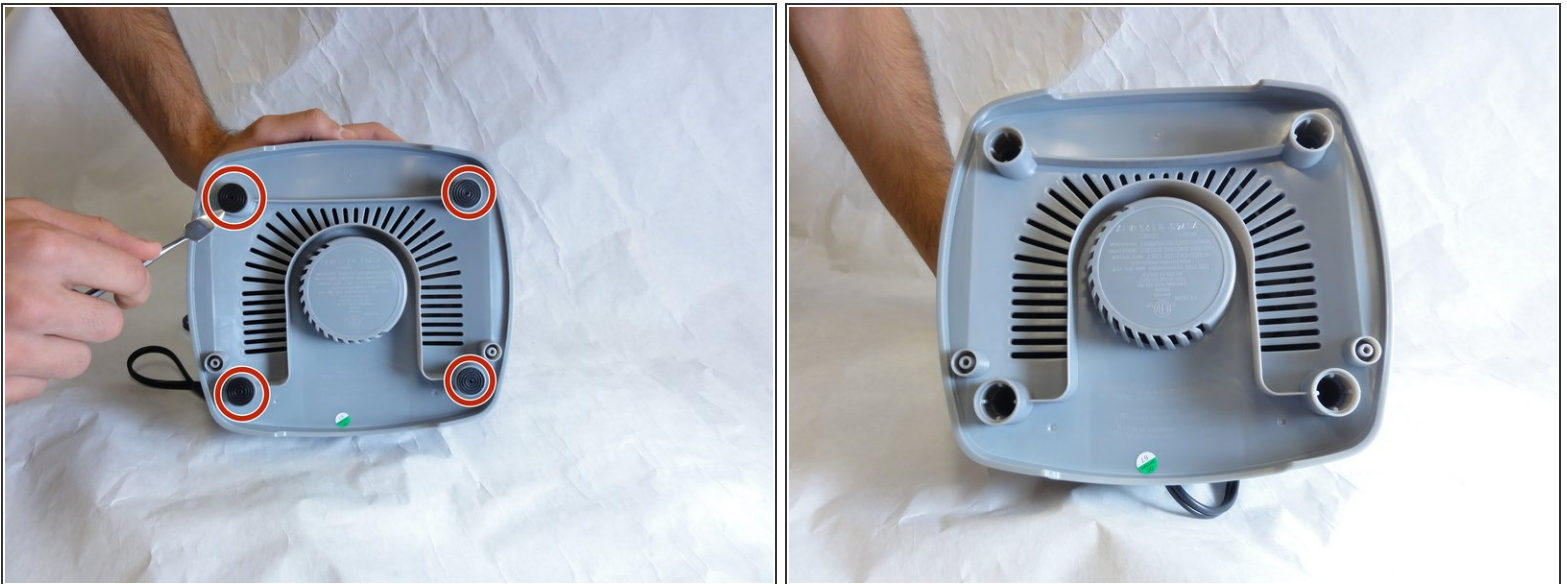
- [64 Bit Driver Kit](#) (1)
 - [Spudger](#) (1)
-

Step 1 — Base Removal



- Hold the food processor upside down and remove the two screws indicated with a screwdriver. Once unscrewed, remove the two rubber suction pads.

Step 2



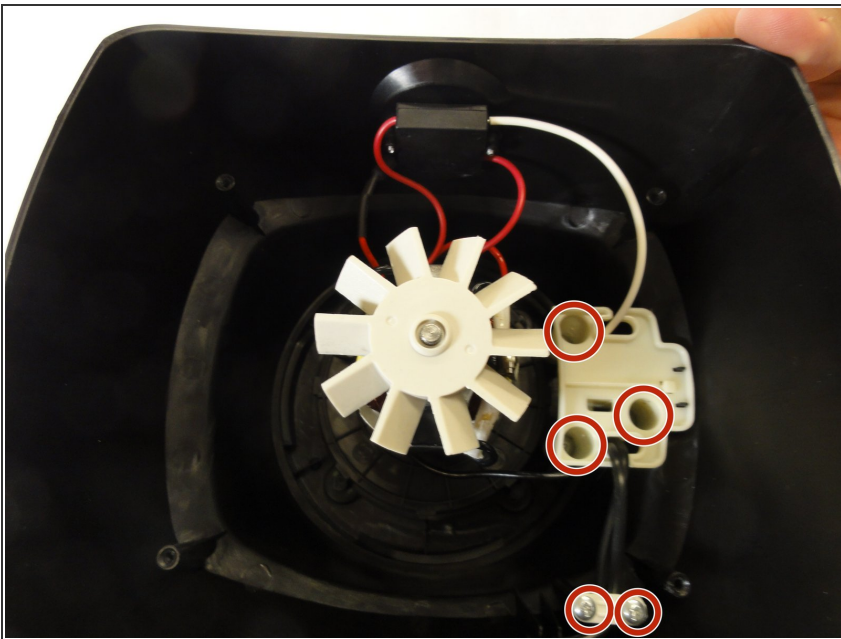
- Use a spudger to remove the 4 rubber base pads located at the corners of the device.

Step 3



- Unscrew all 4 screws that are located beneath the pads with a screwdriver and remove the plastic grey base.

Step 4



- Remove the screws indicated with a screw driver.

Step 5



- Remove the two screws behind the knob with a screwdriver.

To reassemble your device, follow these instructions in reverse order.