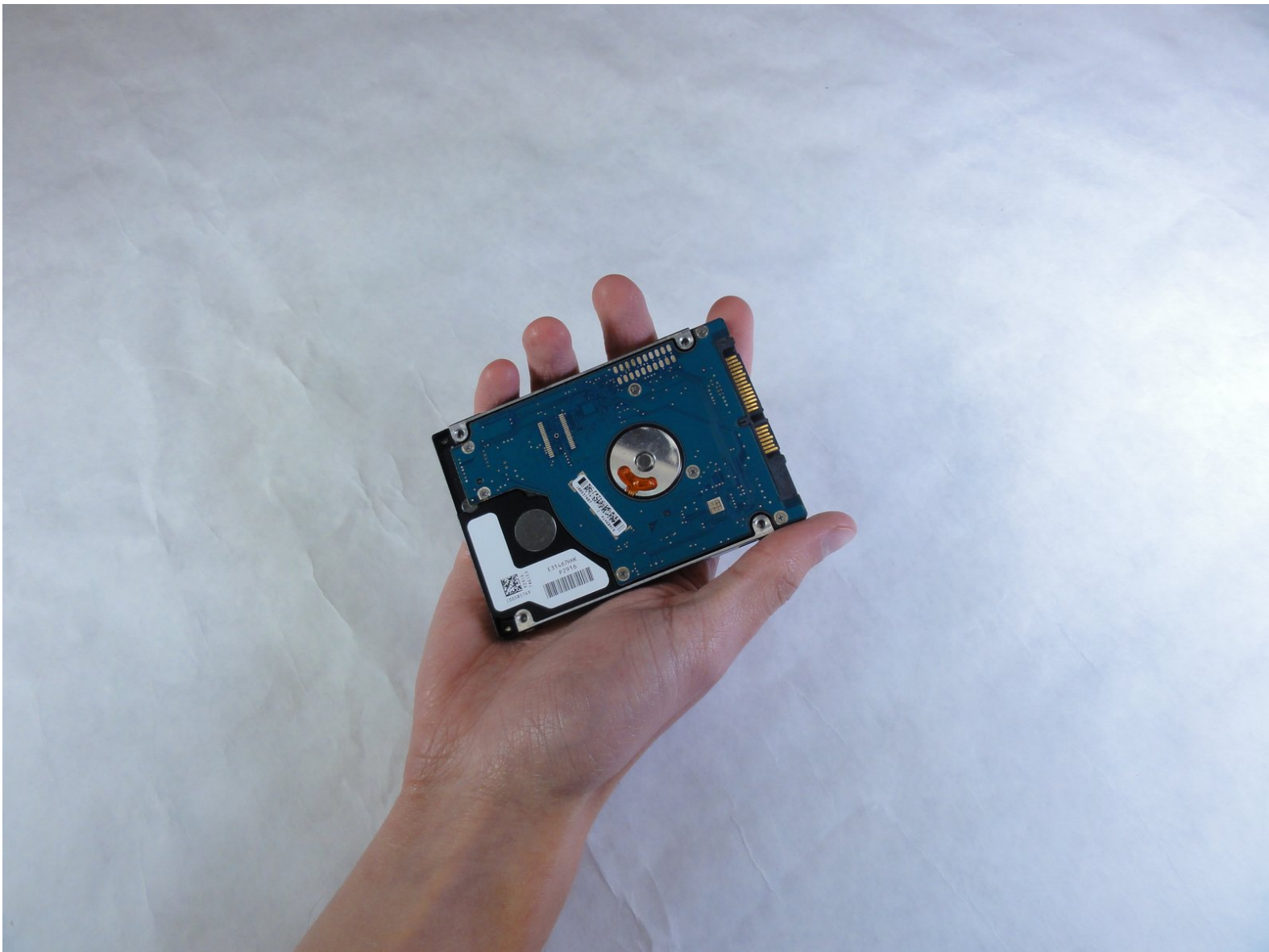




ASUS D550MA-DS01 Hard Drive Replacement

This is a tutorial on how to remove the hard drive for your ASUS D550MA. Removing the keyboard module is a prerequisite to this guide.

Written By: Richard Johnson



INTRODUCTION

If you need to replace your hard drive because it is broken or in need of upgrading, this is the guide for you! In order to go ahead with this guide, you must have already taken the keyboard module off of the laptop. Please visit the prerequisite guide for more details.




TOOLS:

- [Phillips #1 Screwdriver](#) (1)
 - [Spudger](#) (1)
-


Step 1 — Keyboard Module



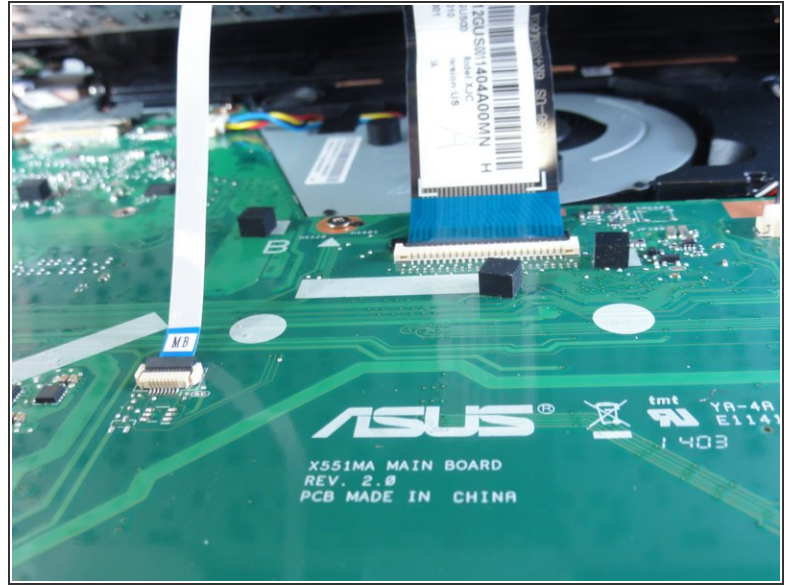
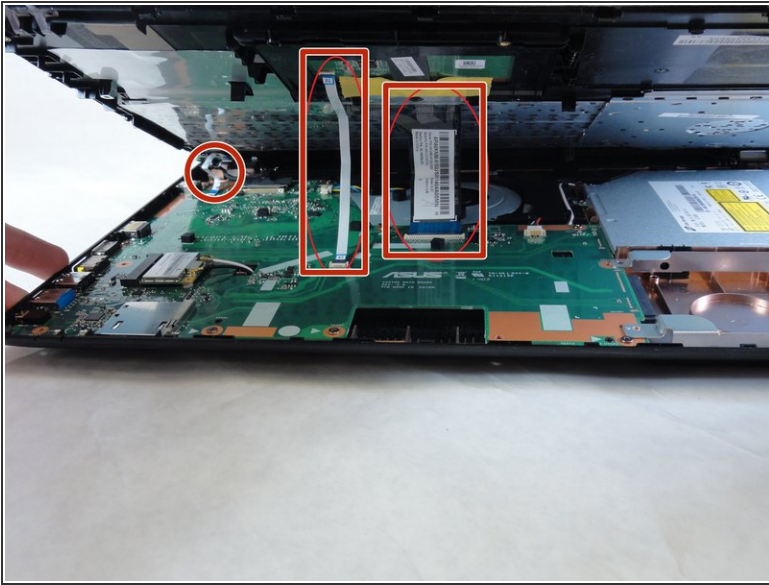
-  Before you begin, be sure to turn off your laptop and unplug it from the outlet.
- Use a Philips #1 screwdriver to remove the nine screws from the back cover.

Step 2



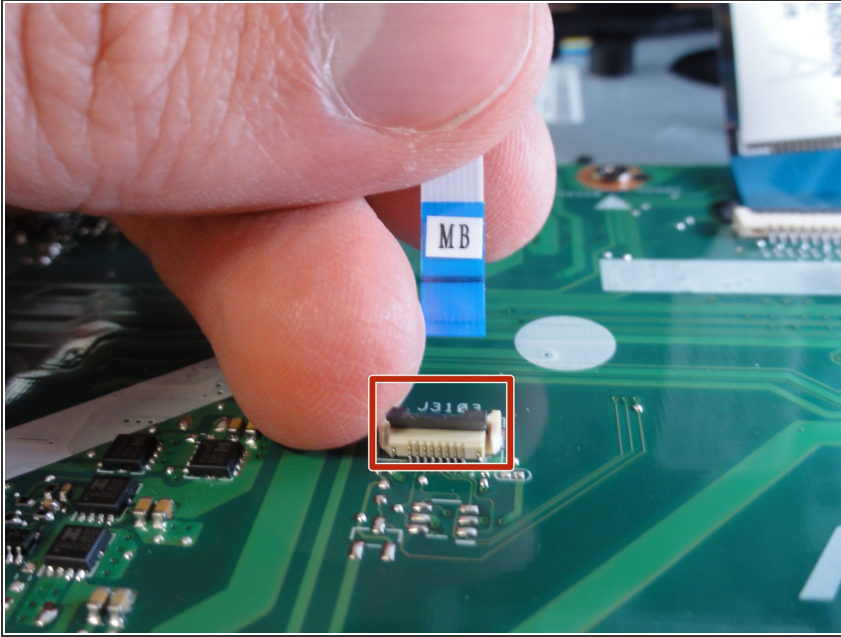
- Turn the laptop over and open the display.
 - Insert the flat edge of the spudger into the crease of the keyboard cover.
 - While the spudger is in the crease, carefully pry open the casing by sliding the spudger along the edge.
-  Do not use excessive force to pry open the lid. You should hear each plastic clip snap open as you run the spudger along the edge.

Step 3



- ① Make sure that the entire cover has been released from the plastic clips.
- Slowly lift the cover open from the front of the laptop, but do not completely remove it.
- Note the locations of the three white and blue data cables connecting to the keyboard to the computer's main board.

Step 4



i If you are only replacing the battery, you can skip this step and the next. Shift the keyboard module away from the display and set it such that the fragile flex cables are not strained.

- Disconnect the three data cables from the motherboard.

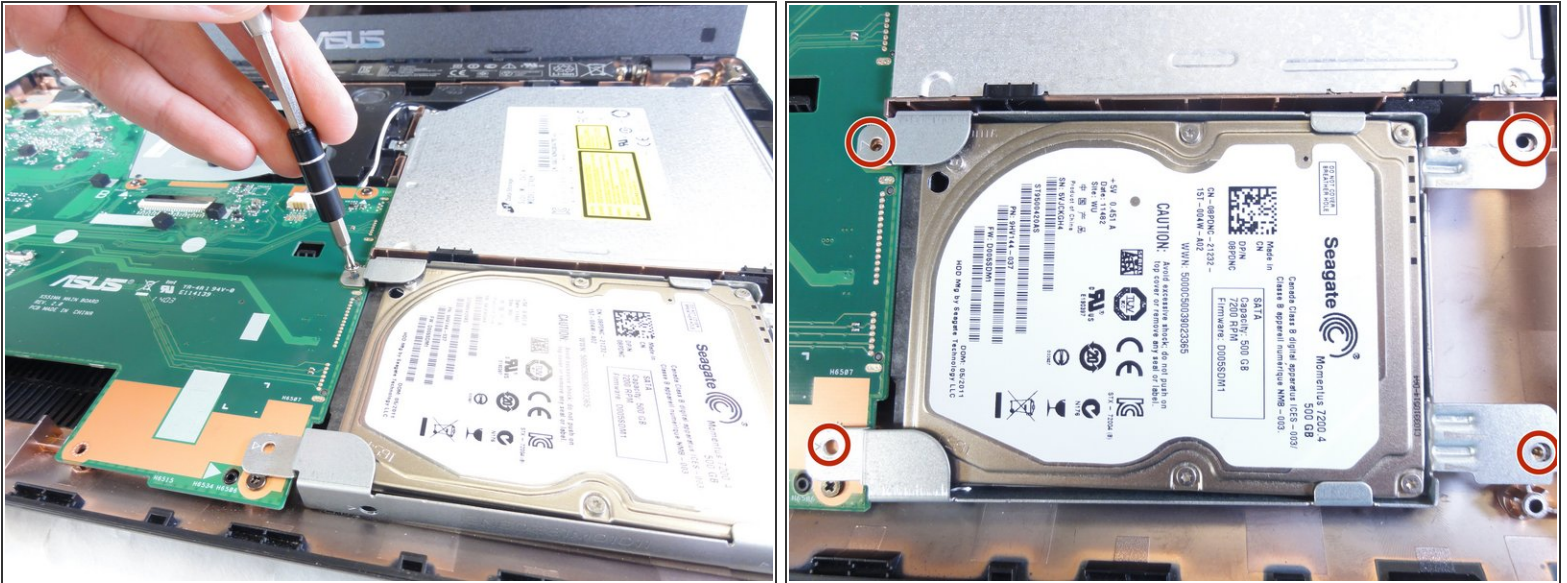
i To unlock a [ZIF connector](#), use the tip of a spudger or your fingernail to flip up the small, hinged locking flap. Carefully slide the unlocked cable out of the socket.

Step 5



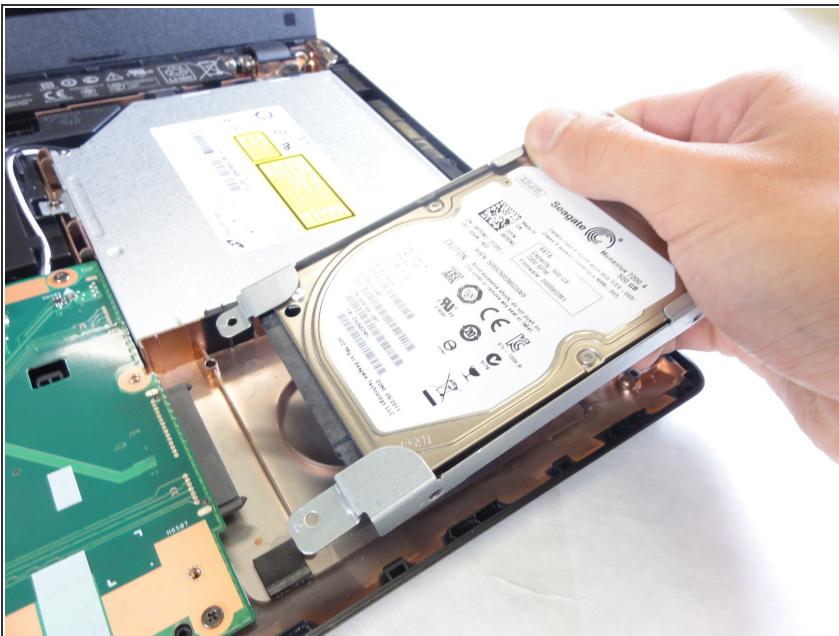
- Remove the fully disconnected keyboard module from the laptop.

Step 6 — Hard Drive



- Remove the four screws that hold the hard drive in place with the Philips #1 screwdriver.
- ⓘ There are two screws connected to the motherboard and two screws connected directly to the case.

Step 7



- Remove the hard drive by sliding it to the right to disconnect it from the motherboard and lifting out.
- ⚠ Be sure to fully disconnect the hard drive from the motherboard to ensure that you do not damage the connectors.
- ⓘ If necessary, unscrew the old hard drive from the holster and screw the new one into the holster.

To reassemble your device, follow these instructions in reverse order.