



iRobot Roomba 560 Clear Sensor Lens Replacement

Replace or clean the clear lens of the top sensor on your Roomba 560.

Written By: Mairead Blaes



INTRODUCTION

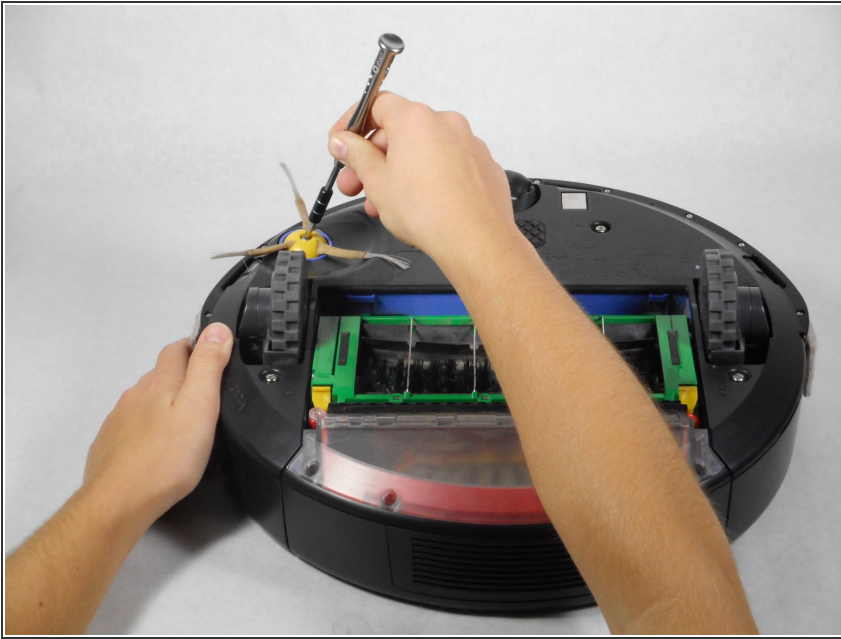
Use this guide if your Roomba 560 is running into objects or the sensors seem to be malfunctioning. While proceeding through this replacement, it is important to keep track of the large quantity of different sized screws that you must remove.



TOOLS:

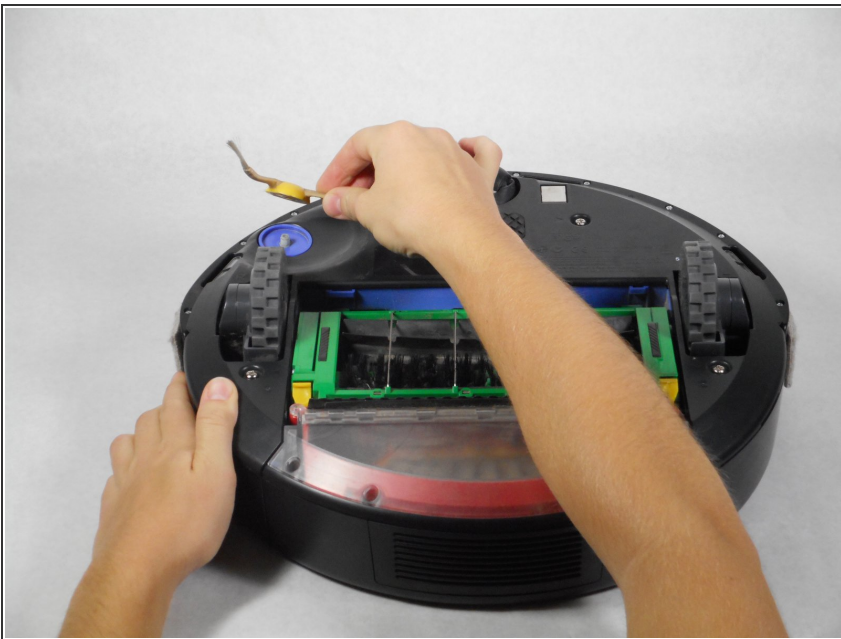
- JIS #1 (1)
-

Step 1 — Side Sweeper



- Flip the Roomba upside down.
- Unscrew the single 5 mm screw on the yellow side sweeper using the Phillips #2 driver.

Step 2



- Lift the yellow side sweeper, removing it from the device.

Step 3 — Battery



- Using the Phillips #2 driver, remove the four 10 mm screws that hold the back panel in place.

Step 4



- Lift up the back panel to remove it from the device.

Step 5



- Lift up the yellow battery by pulling up the green tabs on its side.

⚠ Handle the battery with care.

Step 6 — Clear Sensor Lens



- Rotate the Roomba so the bumper is in front of you.

Step 7



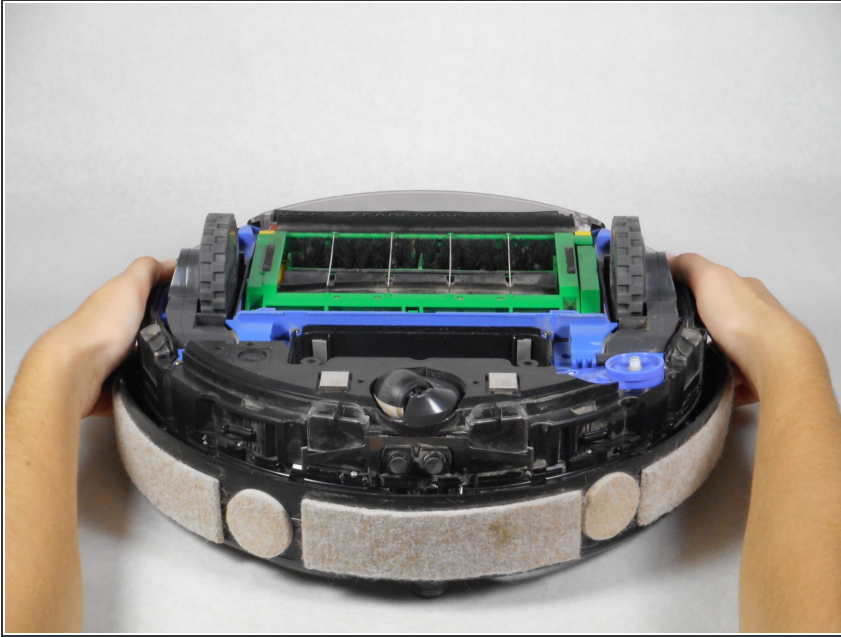
- Using the Phillips #1 driver, remove the ten 10 mm screws on the bumper that run along the outer edge of the Roomba.

Step 8



- Lift the thin top cover that holds the bumper in place.

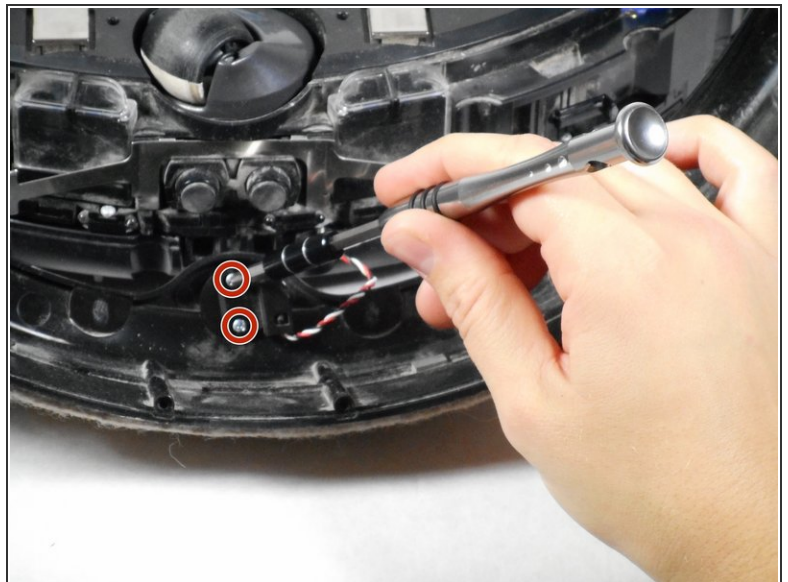
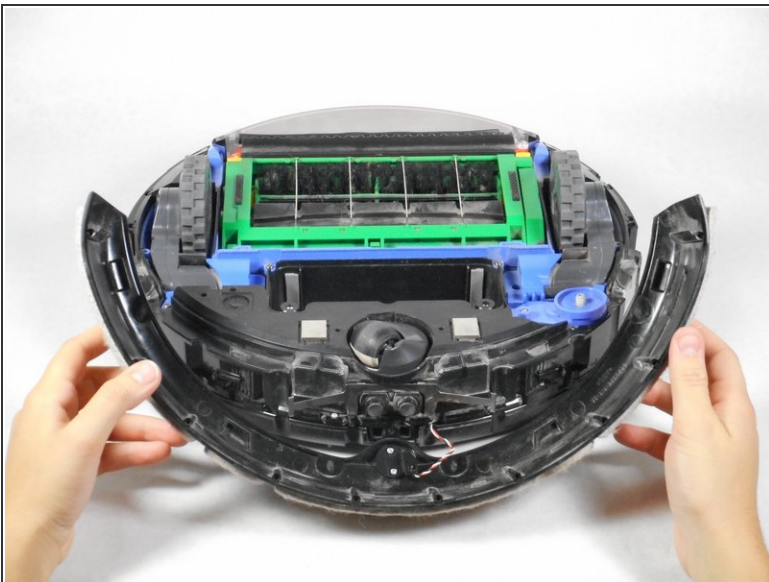
Step 9



- Gently lift the device upwards from the bumper to detach these two pieces.

⚠ There are wires connecting the bumper to the device. Be careful while lifting the device off the bumper as to not damage these wires.

Step 10

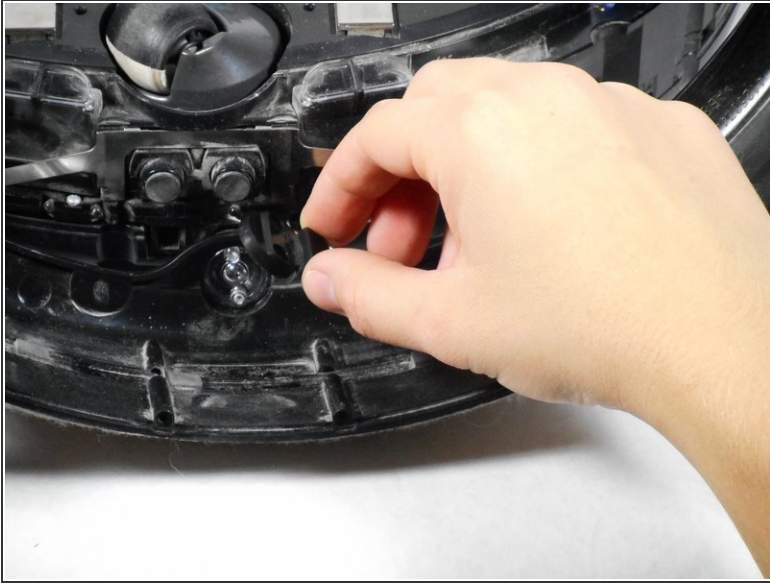


- Lift the bumper upwards for easier access.
- Unscrew the two 5 mm screws that connect the red and white wires to the device using the Phillips #1 driver.

 The sensor can be unplugged from the motherboard so the bumper isn't hanging off the Roomba.

This document was generated on 2022-09-20 07:02:09 PM (MST).

Step 11



- Lift the circular black panel off the lens.
- Lift the clear lens that is on the other side of the bumper and replace it with a new lens.

To reassemble your device, follow these instructions in reverse order.