



iMac Intel 24" EMC 2111 Front Bezel Replacement

Replace the plastic front bezel on your iMac Intel 24" EMC 2111.

Written By: Andrew Bookholt



INTRODUCTION

Use this guide to replace a damaged plastic front bezel.

TOOLS:

- [Phillips #00 Screwdriver](#) (1)
 - [Phillips #1 Screwdriver](#) (1)
 - [Spudger](#) (1)
 - [T8 Torx Screwdriver](#) (1)
-

Step 1 — Access Door



- Loosen the two Phillips screws securing the access door to your iMac.
- ⓘ Both screws remain captive within the access door.
- Remove the access door.

Step 2 — Front Bezel



- Remove the following screws along the lower edge of your iMac:
 - Three 6 mm T8 Torx screws
 - One 8 mm T8 Torx screw

Step 3



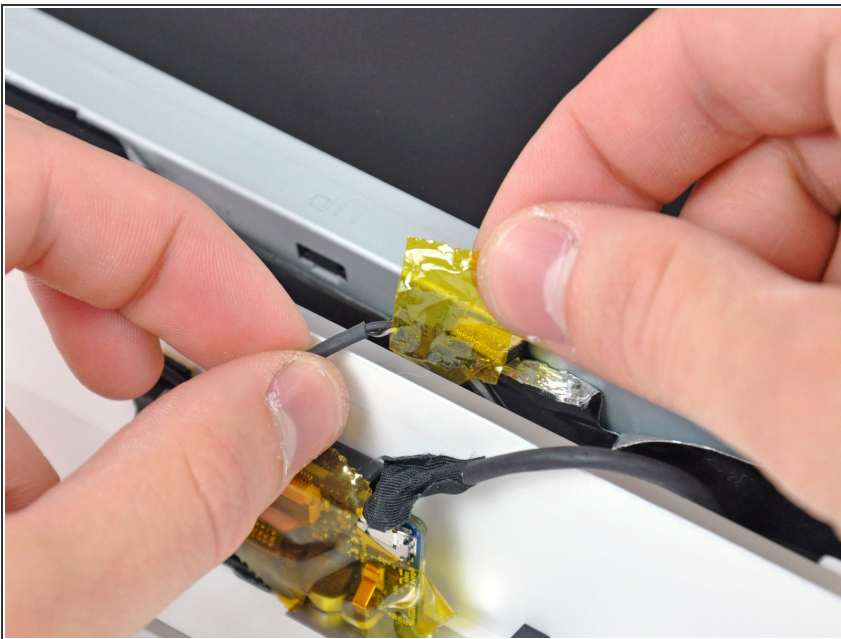
- ① Lay your iMac stand-side down on a flat surface.
- To lift the front bezel off the iMac, simultaneously:
 - Use your thumbs to press in the RAM arms and hold the iMac down.
 - Use your index fingers to pull the small bridge of material on the front bezel toward yourself.
 - Pull the front bezel up with your index fingers.
- Once the small bridge of material has cleared the RAM arms, lift the front bezel by its lower edge just enough to clear the bottom edge of the rear case.

Step 4



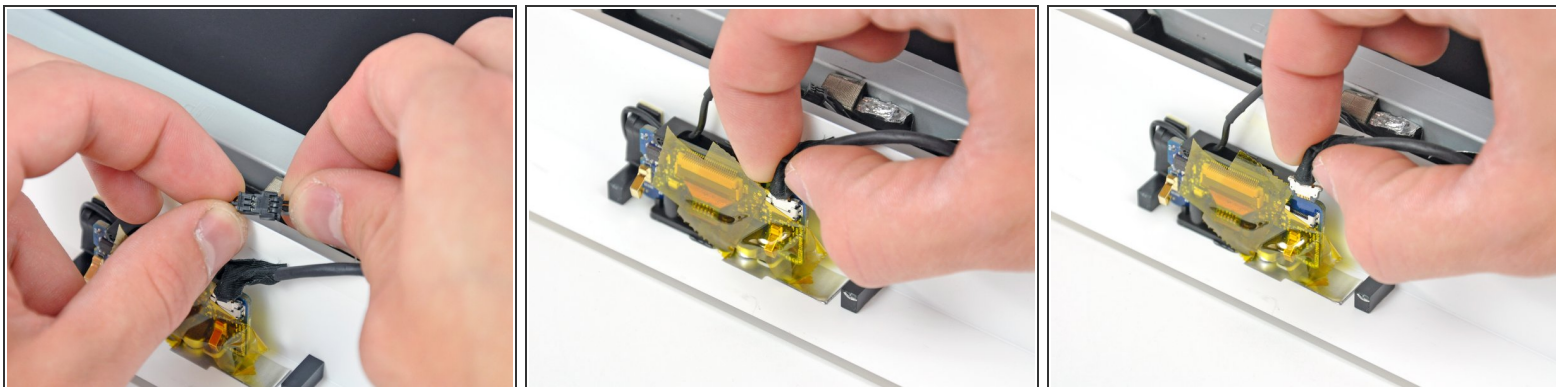
- Lift the front bezel off the rear case and rotate it away from the bottom edge of the iMac, minding the camera and microphone cables still attached to its upper edge.
- ⓘ The third picture shows the top front bezel brackets and their slots cut into the top edge of the iMac's rear case.
- ⚠ Do not completely remove the front bezel, as it is still attached by the camera/microphone cables.

Step 5




- ⓘ If necessary, remove the strip of tape covering the microphone cable connector.
- ★ The microphone connector is located near the inside of top edge of your iMac.

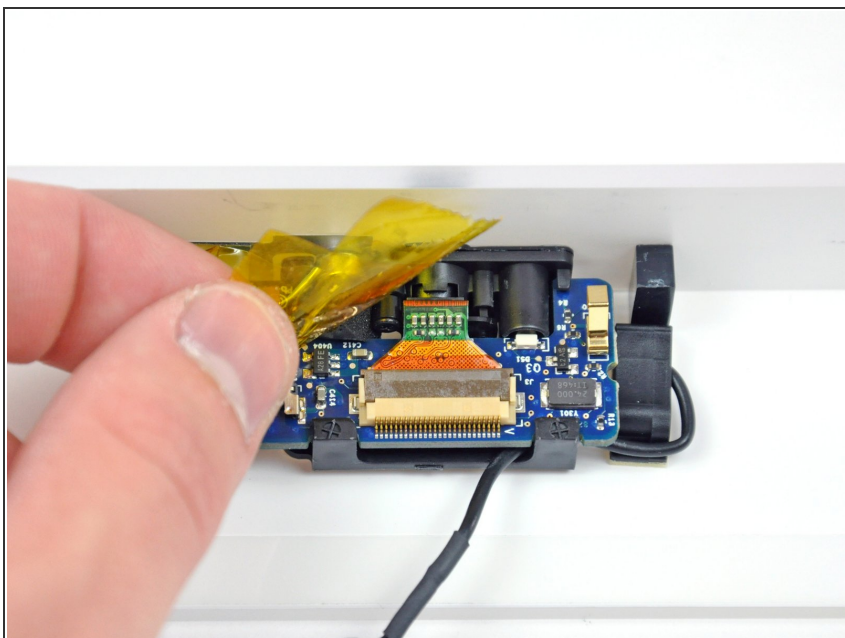
Step 6





- Disconnect the microphone cable.
- Disconnect the camera cable by pulling its connector away from the socket on the camera board.

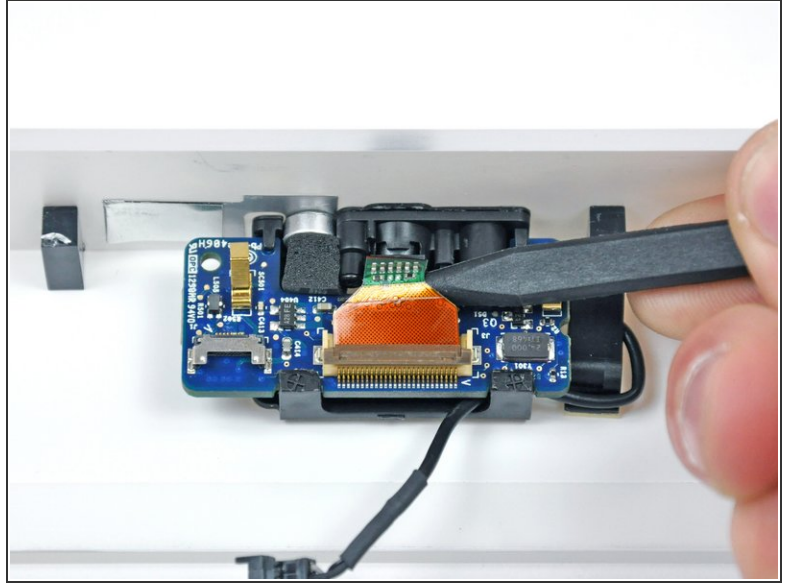
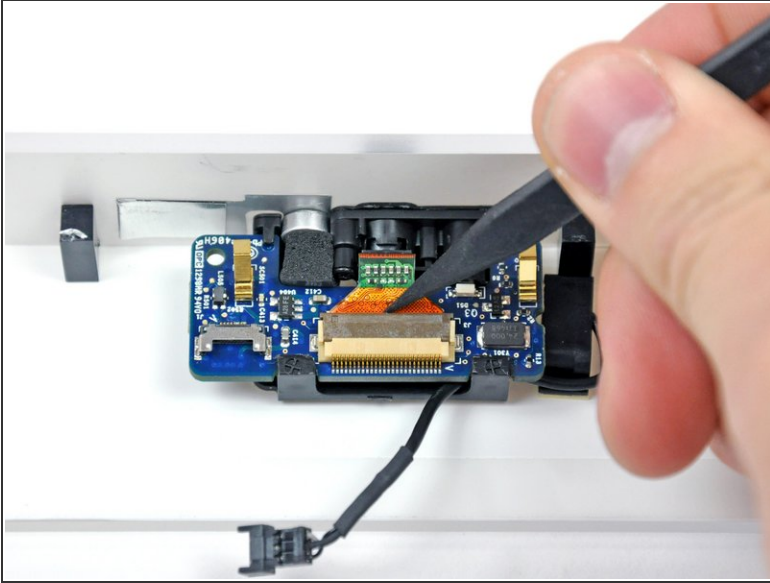
 The camera cable connector and socket are delicate and easily bent. Remove with caution.

Step 7 — Camera Board



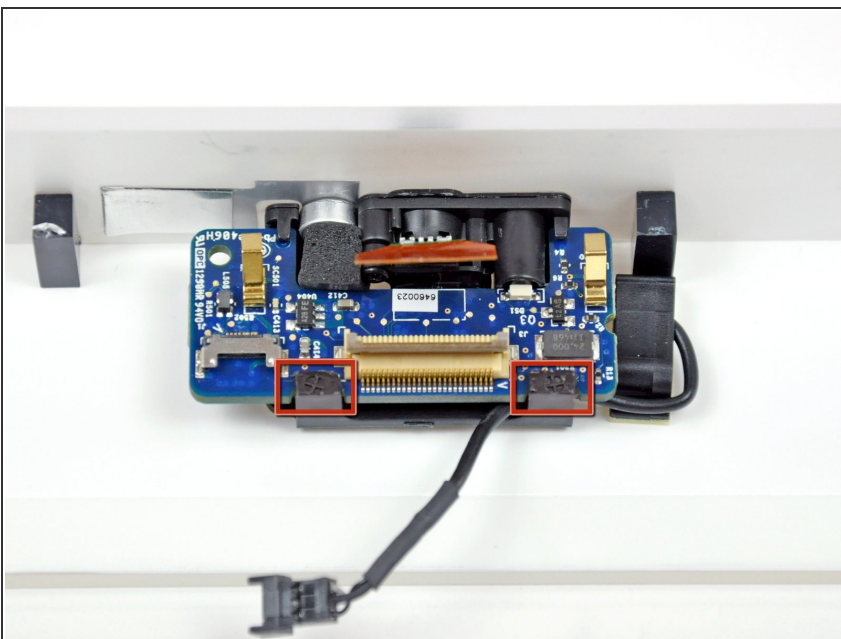
-  If necessary, remove the strips of tape covering the camera board.
-  Don't forget to reapply tape to the face of the camera board to avoid electrical shorts.

Step 8



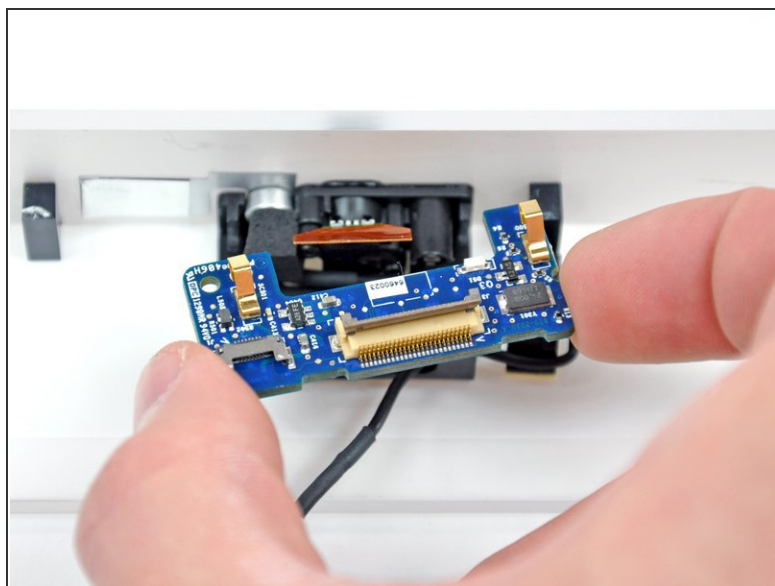
- Use the tip of a spudger to flip up the camera ribbon cable retaining flap.
- ⓘ Flip the tab away from the front face of the front bezel.
- Use the tip of a spudger to pull the camera ribbon cable away from its socket on the camera board.

Step 9



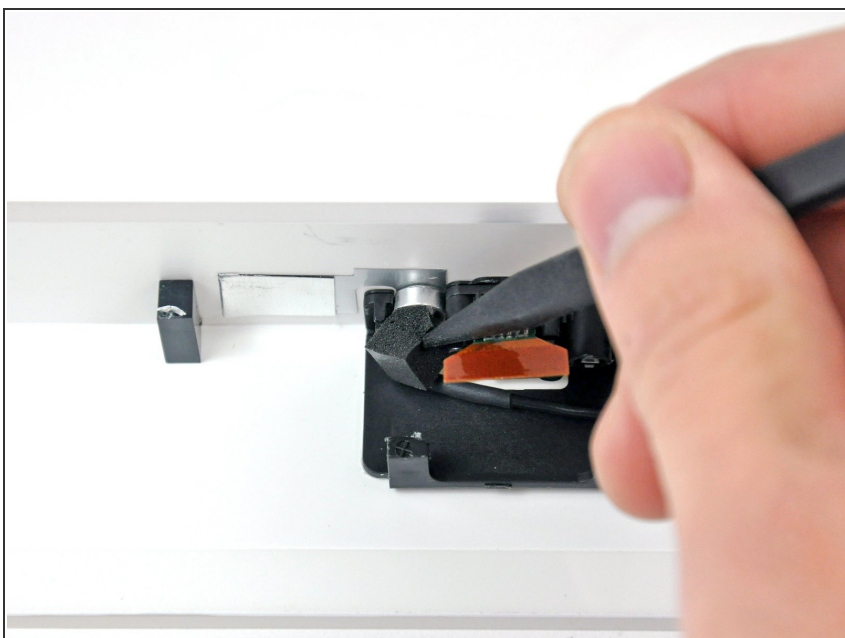
- ⓘ Rather than being held down by screws, the camera board is held down by a black plastic bracket attached to the front bezel.
- In the next step, you will rotate the two black retaining clips (shown in red) away from the camera board to free it from the front bezel.

Step 10



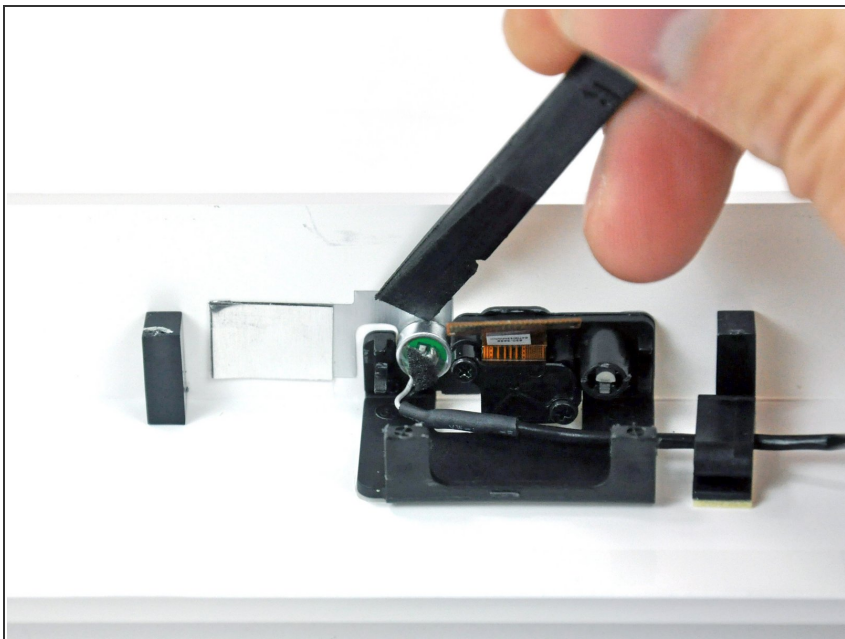
- Use your thumbs to simultaneously rotate both retaining tabs away from the camera board while pushing the board up from either side with your index fingers.
- Remove the camera board from the front bezel.

Step 11 — Microphone



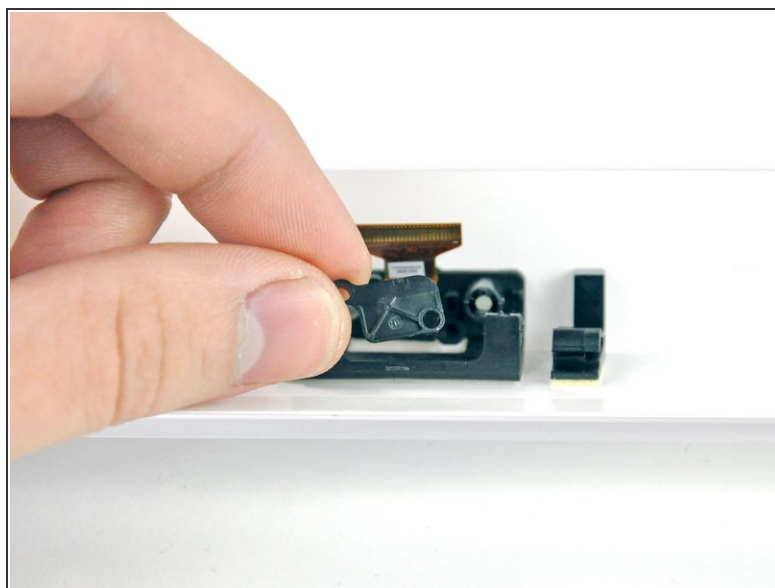
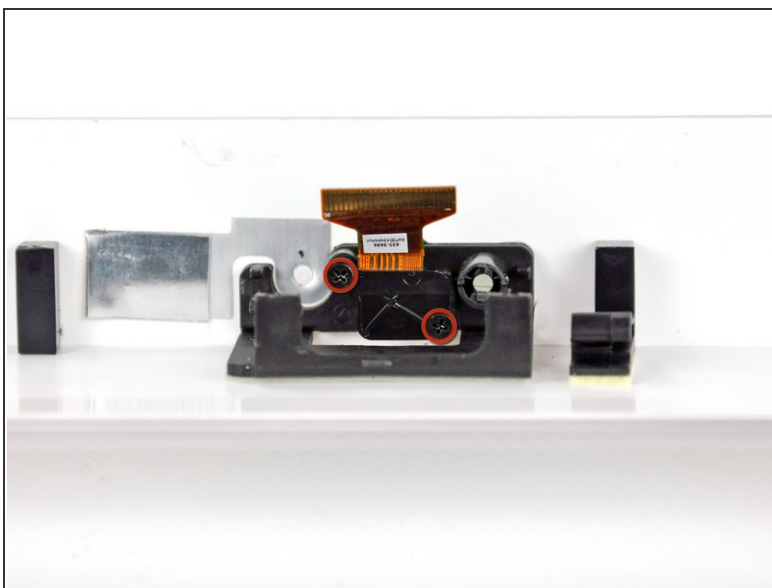
- Use the tip of a spudger to remove the foam bumper covering the microphone.

Step 12



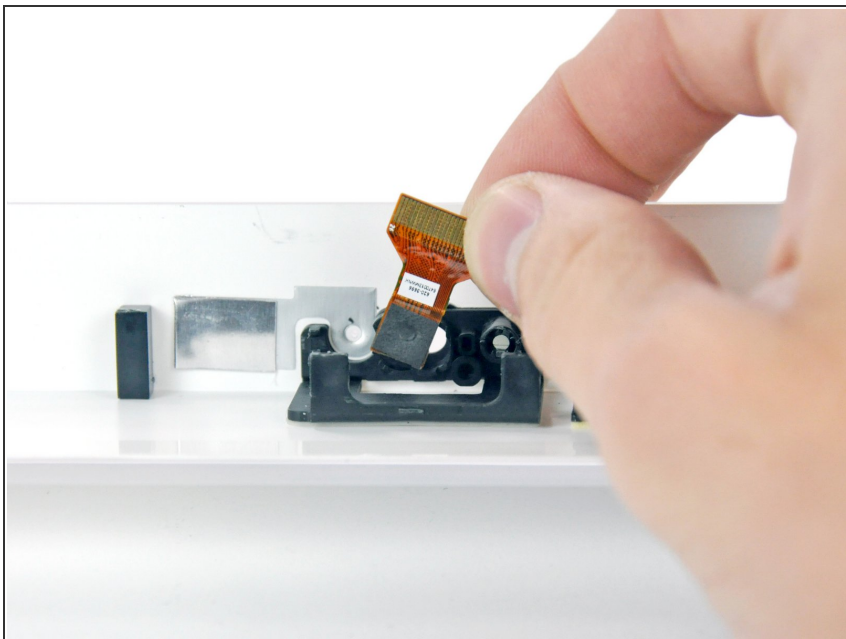
- Use the flat end of a spudger to pry the microphone off the adhesive holding it to the front bezel.

Step 13 — Camera



- Remove the two Phillips screws securing the camera to the camera bracket.
- Remove the small black plastic camera bracket from the front bezel.

Step 14



- Pull the camera lens away from the camera bracket and remove it from the front bezel.

Step 15 — Front Bezel



- Front bezel remains.

To reassemble your device, follow these instructions in reverse order.