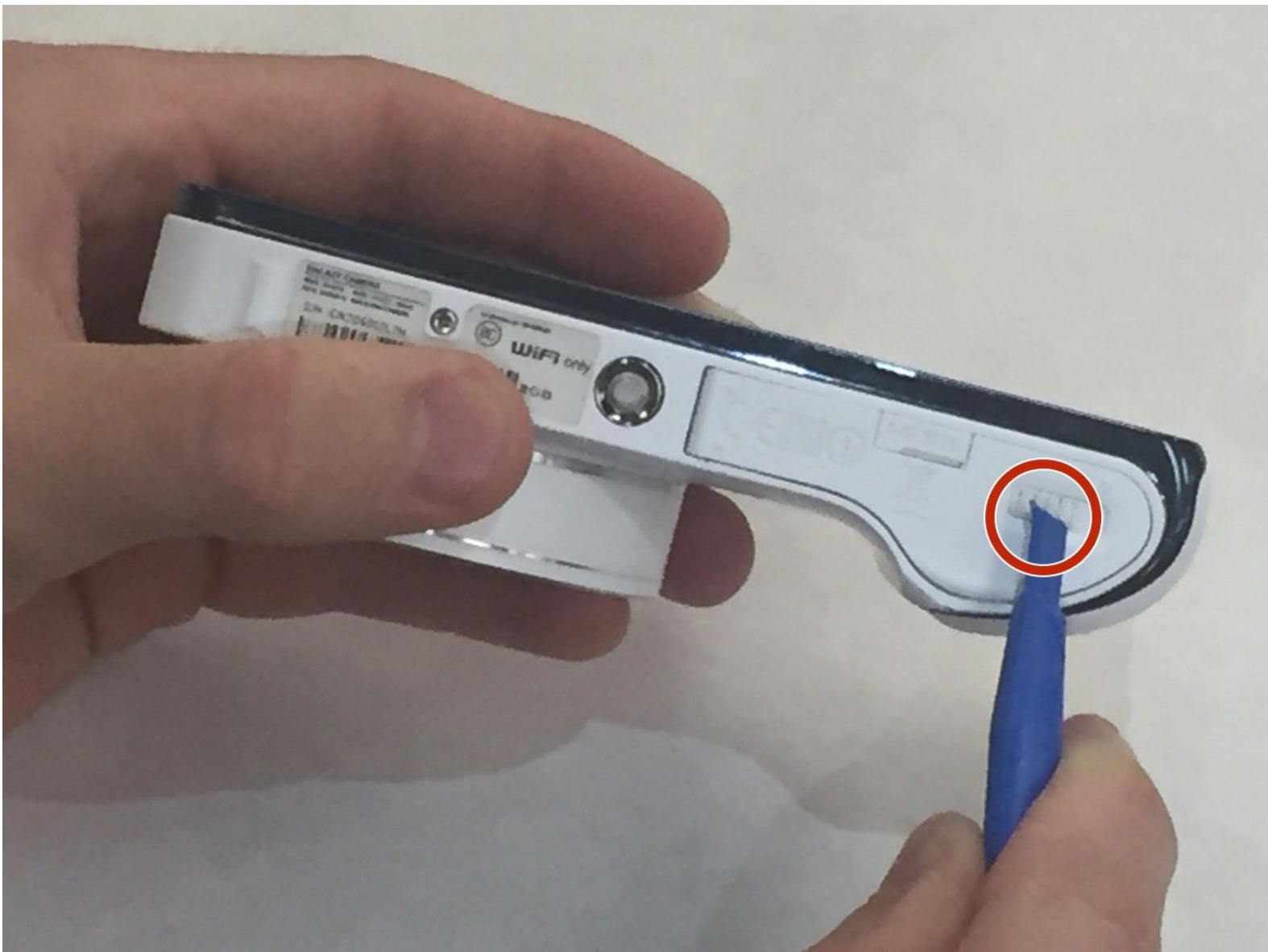




Samsung Galaxy Camera Battery Replacement

We will be tackling the task of replacing a corrupted or inefficient battery. Below will be step by step pictures and instructions that will guide you through the process.

Written By: Derek Brown



INTRODUCTION

When Using this Guide

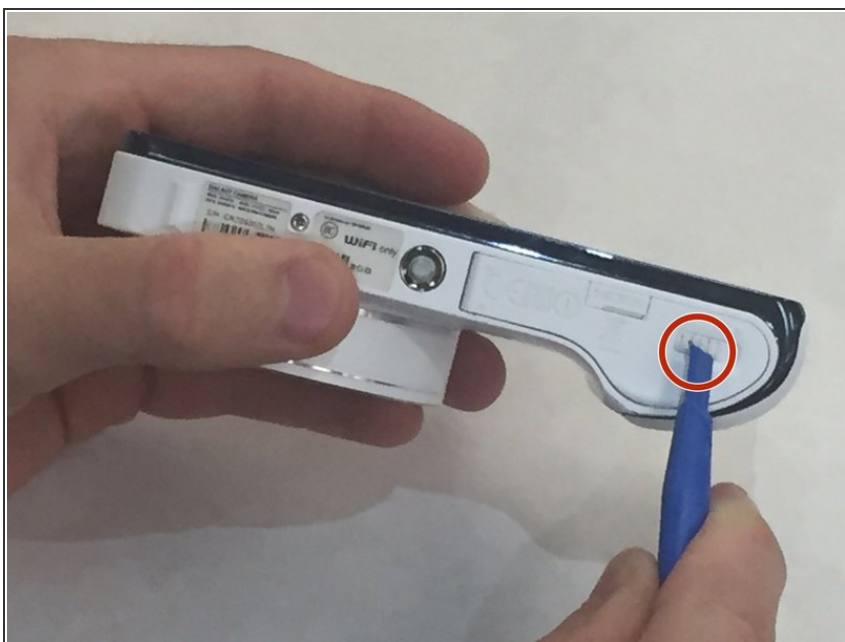
Please note the circles on our pictures that indicate where screws are removed from, as most of the screw lengths are pertinent to reassembly.



TOOLS:

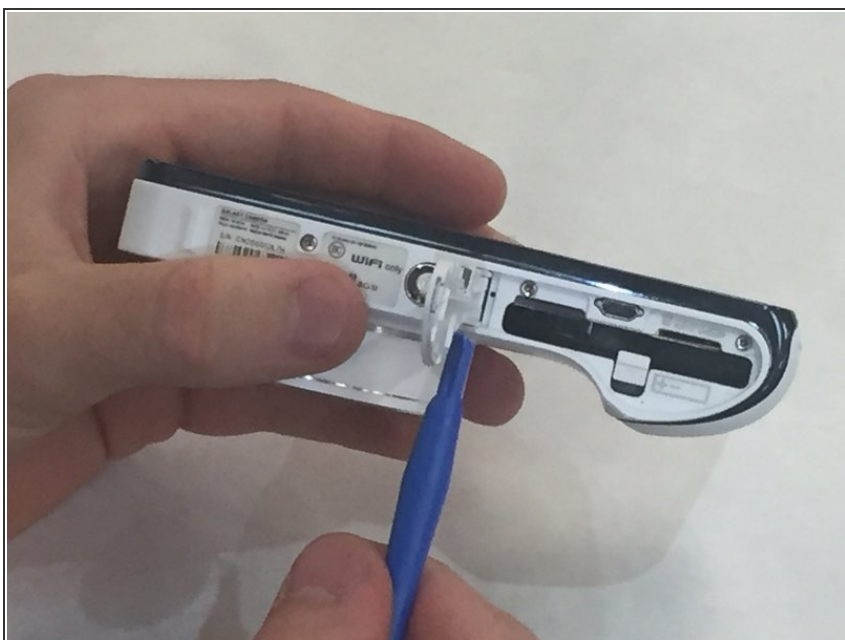
- [iFixit Opening Tools](#) (1)
-

Step 1 — Battery



- Lift aside the casing for the battery using a plastic opening tool. This compartment is on the bottom of the camera, not under the lens.
- The casing is highlighted in the red markup circle.

Step 2



- The slot for the battery should look like this. This is the case for the battery.

Step 3



- Using plastic opening tool, slide battery capture latch back and allow battery to fall out.
- Insert your replacement battery.

Step 4



- After the battery has been replaced, close the battery casing.
- Now replace the casing from step one. Success, the battery has been replaced!

These steps follow completely: there is no need to reverse the order of steps to reassemble.