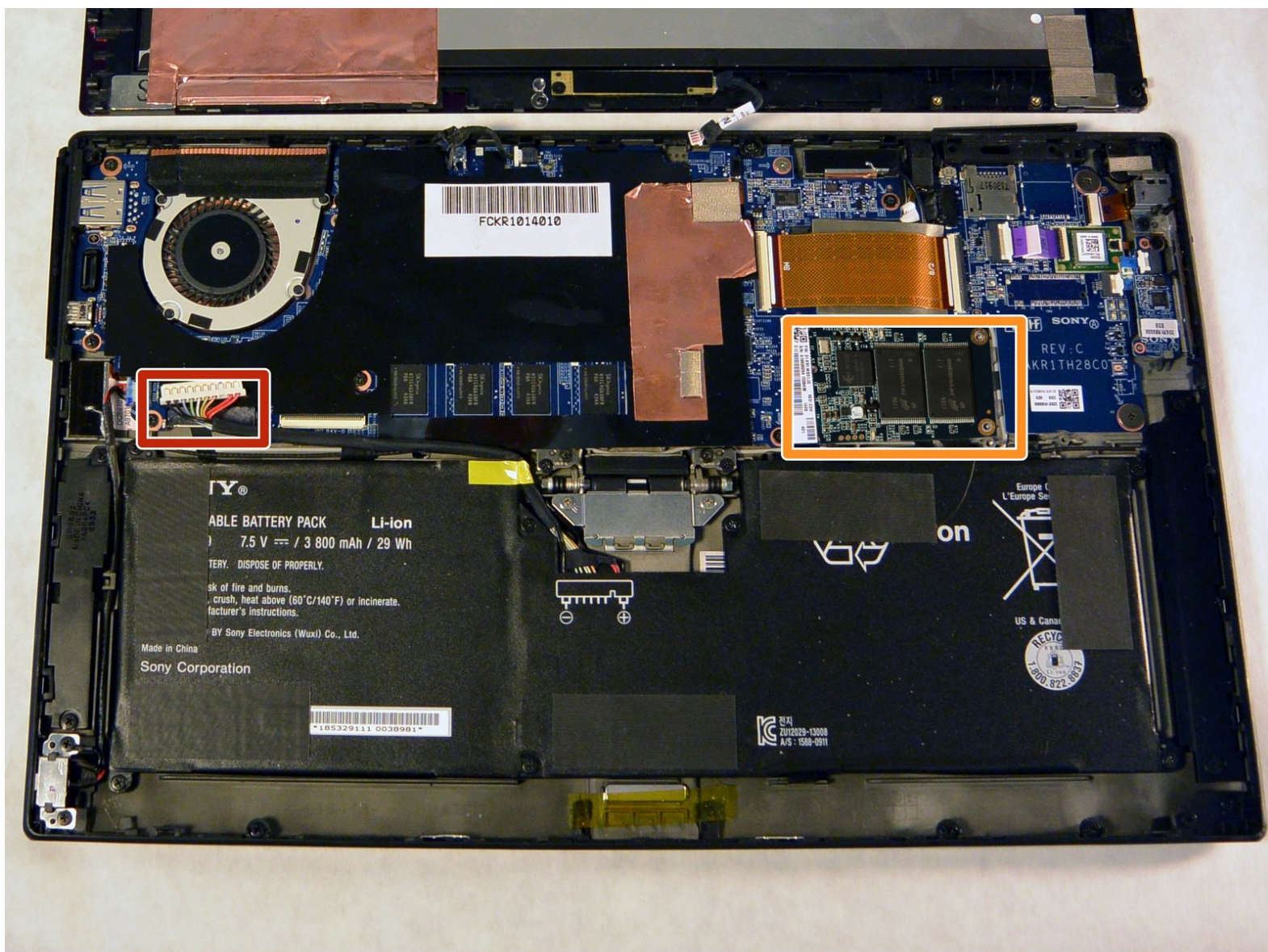




# Sony Vaio Tap 11 Solid State Disk Replacement

The SSD is what stores the operating system,...

Written By: Alexander Bridges



# INTRODUCTION

The SSD is what stores the operating system, program executables, and the personal files of every user. If the device is constantly displaying warnings about disk usage, replacing with a larger capacity module will allow for additional file storage.



## TOOLS:

- [Phillips #000 Screwdriver](#) (1)
  - [Suction Handle](#) (1)
-

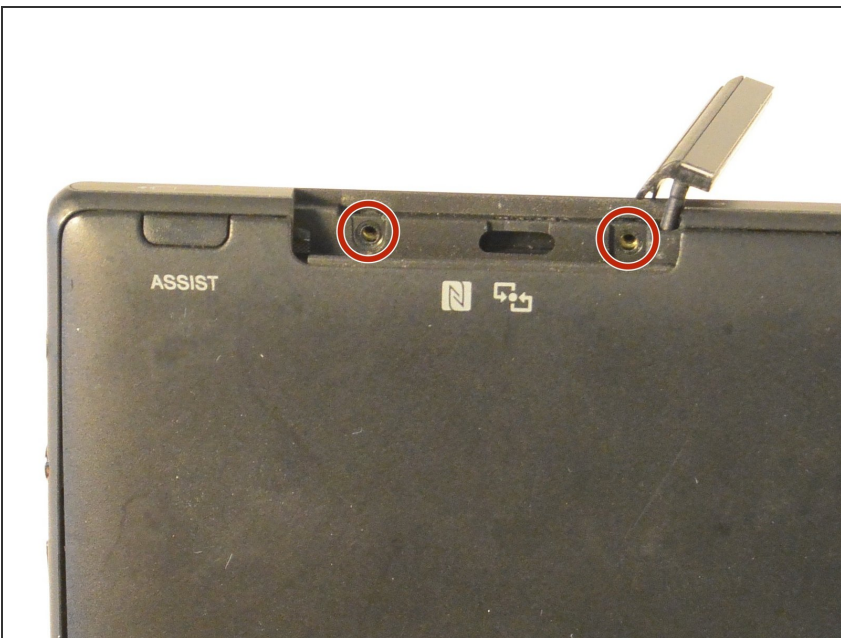


## Step 1 — Screen Assembly



- Begin by opening the HDMI/USB port cover on the left edge.
- Remove the three #000 headed, 3 mm long screws located underneath the port cover.

## Step 2



- Locate and open the Micro SD slot on the top side of the device.
- Remove the two screws located beneath the cover.

## Step 3



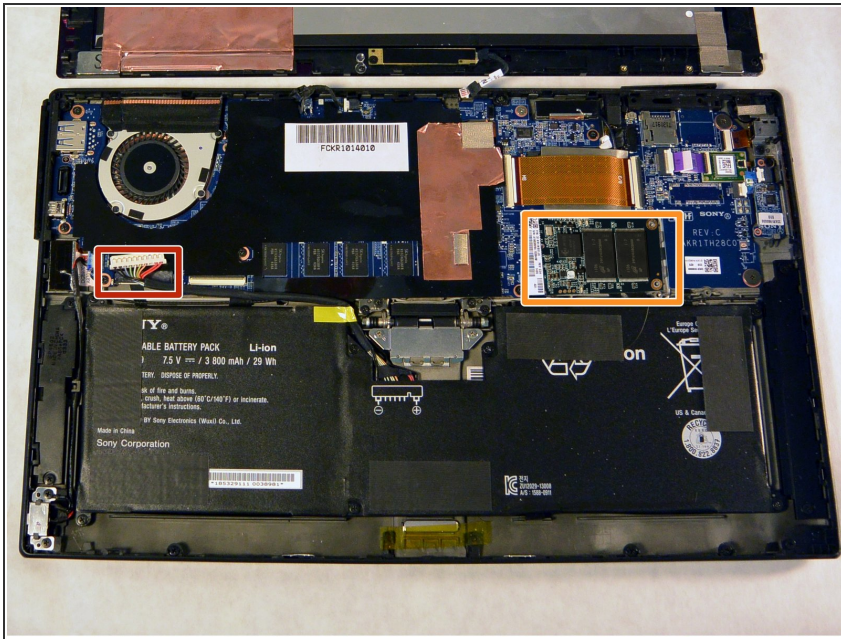
- Attach the suction cup to the top right area of the screen.
- Pull to separate the screen from the rest of the device.

**⚠ Be aware of the front camera cable that is still connected to the rest of the device.**

- Detach the display ribbon cable.



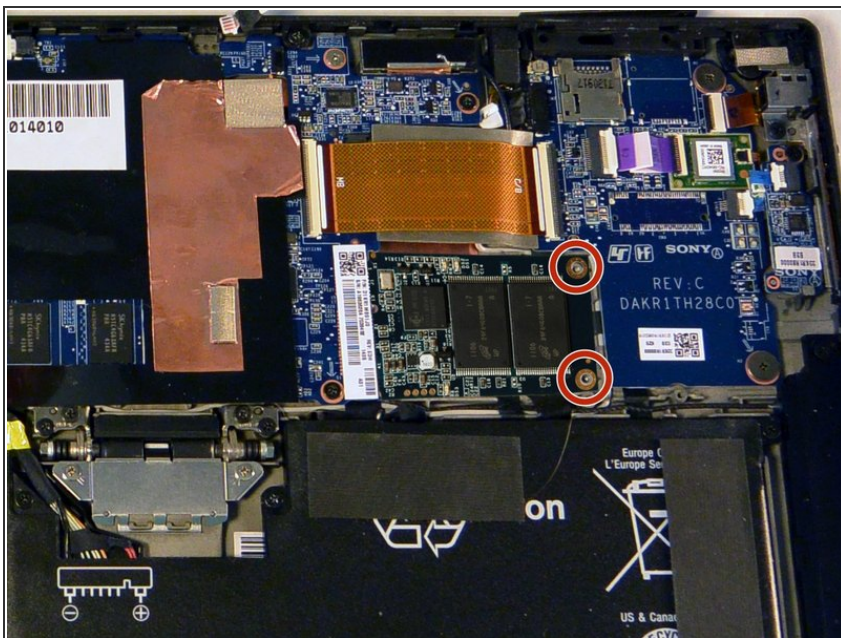
## Step 4 — Solid State Disk



⚠️ Unplug the battery connector located beside the fan.

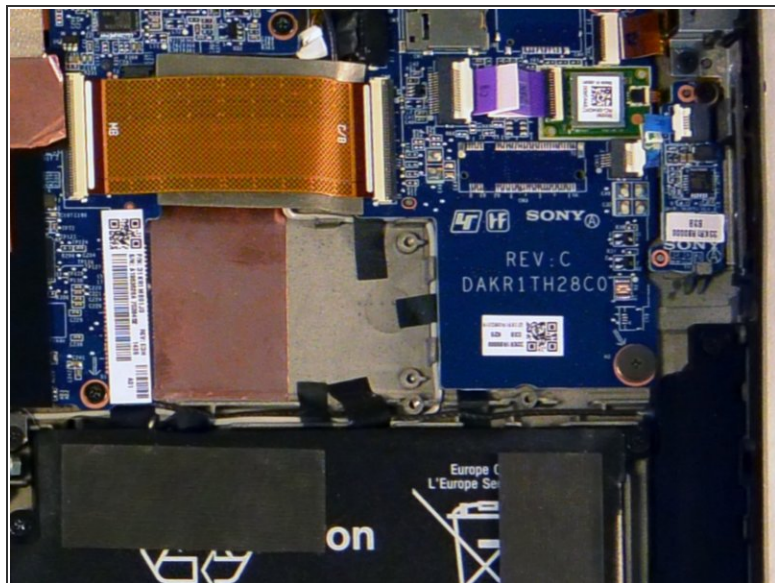
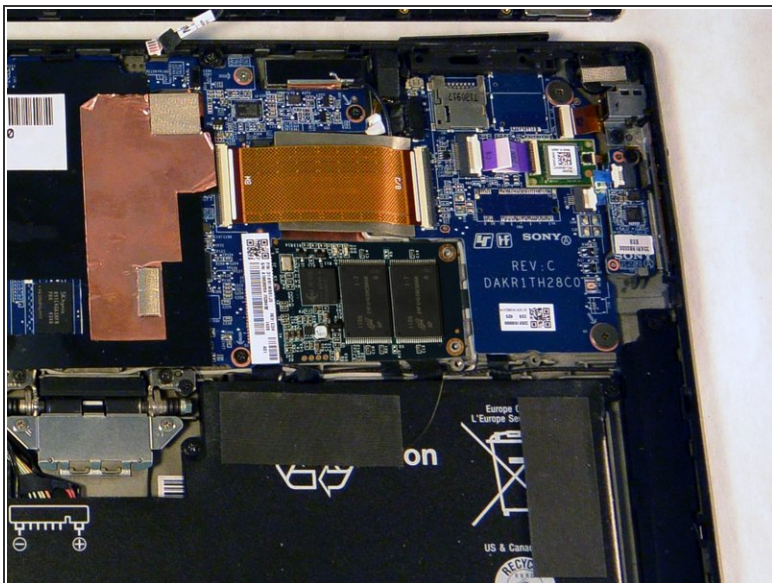
ℹ️ Locate the SSD on the right side of the device, above the battery and beneath the WiFi chip.

## Step 5



- Remove the two 3 mm Phillips #000 screws from the right edge of the SSD.

## Step 6



- Pull the SSD towards the right and slightly up, removing it from the back assembly.

To reassemble your device, follow these instructions in reverse order.