



Zyllion ZMA-13-BK Shiatsu Massage Pillow Heater Replacement

Learn how to replace the broken heater of a Zyllion ZMA-13-BK Shiatsu Massage Pillow.

Written By: Yuchen Li



INTRODUCTION

Are you going to throw away your expensive massage pillow just because the heater is broken? Here is a simple guide to replace your broken heater so that your massage pillow can work again.



TOOLS:

- [Soldering Workstation](#) (1)
- [Pry Bar](#) (1)
- [Phillips #1 Screwdriver](#) (1)



PARTS:

- [New Heater](#) (1)

Step 1 — Heater



- Disconnect the power plug located on the back of the massage pillow.

⚠ Please do this step carefully in order to avoid electric shock.

Step 2



- Unzip the cover. You can locate the zipper at the back of the massage pillow.
- Take out the pillow so that you can manage the heater completely.

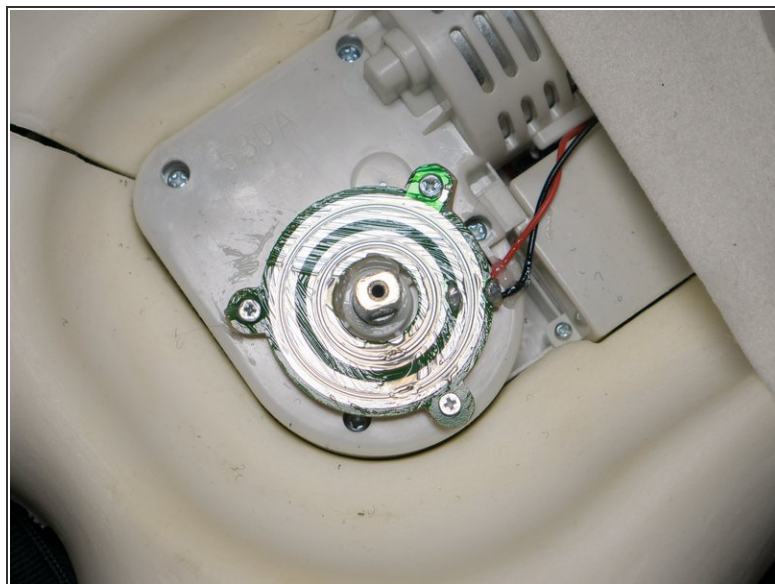
Step 3



- Use a Phillips JIS #1 screwdriver to remove the screw at the center of the heater.

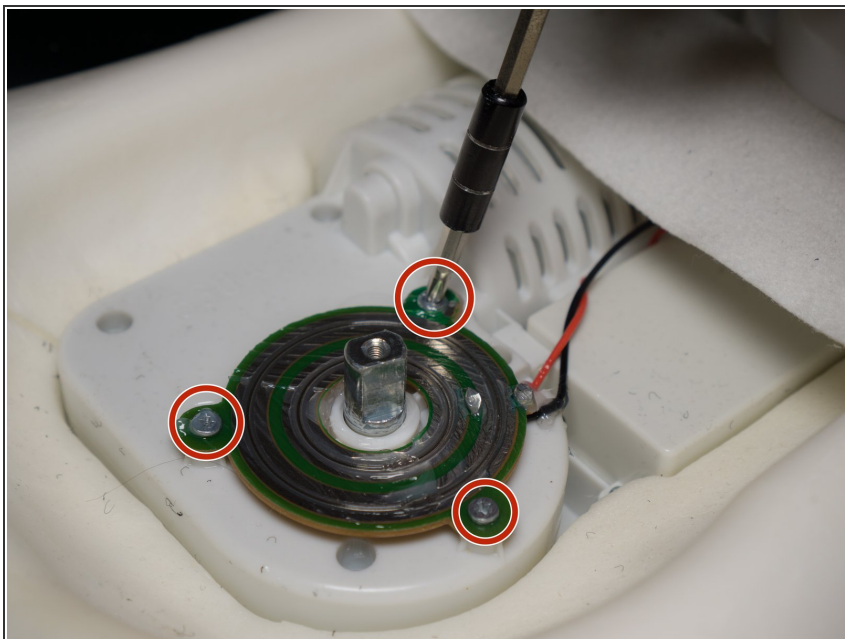
ⓘ The screw is 8.0mm.

Step 4



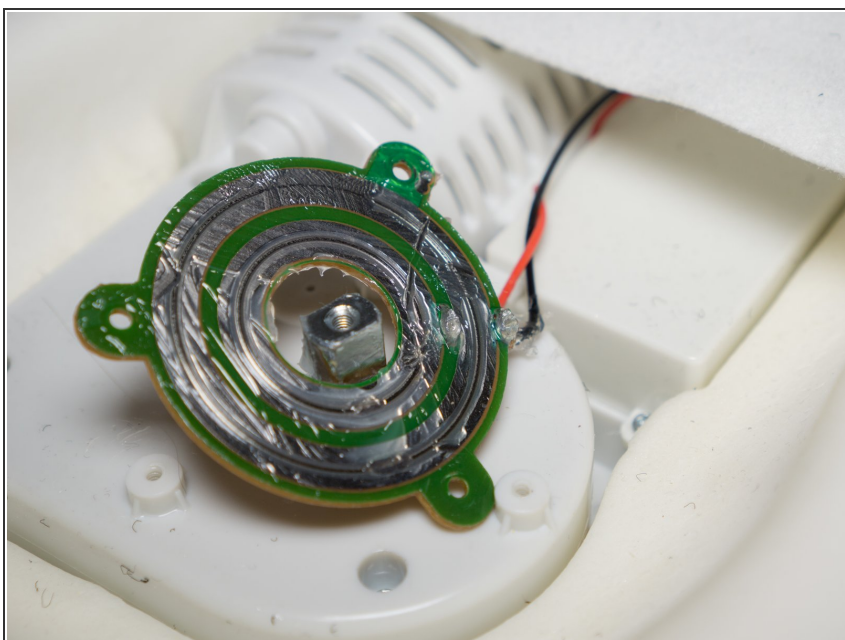
- Remove the entire heater from the pillow.
- You can see a green circuit board after removing the heater.

Step 5



- Using the Phillips JIS #1 screwdriver, remove the three screws circled in the picture.
- ⓘ All three screws are 8.0mm, which are the same size as the previous one. They are interchangeable.

Step 6



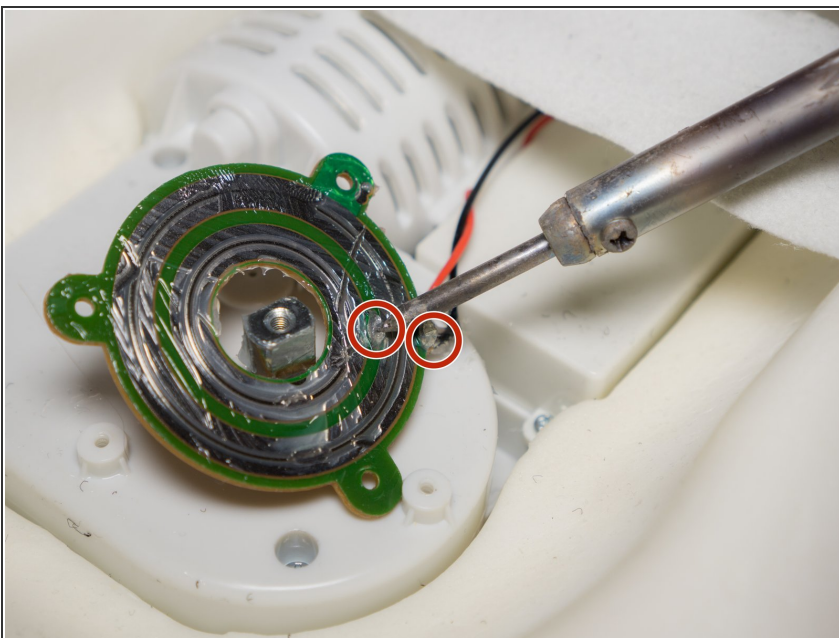
- Now you can take out the circuit board. There will be two wires attached to the circuit board.
- If you prefer, you can clean the circuit board gently with dry tissues to remove the sticky lubricant.

Step 7



- Use the pry bar to separate the wire from the white main board.
- ⚠ Before prying, check if you removed the power plug from the outlet and the massage pillow.

Step 8



- Using your soldering station, remove the wires from the circuit board.
- ⓘ If you don't know how to solder, you can check out this guide: [How To Solder and Desolder Connections](#)
- ⚠ Soldering can be dangerous. Be cautious of high heat soldering tools.
- Now, you can separate the circuit board completely to replace with a new heater.

To reassemble your device, follow these instructions in reverse order.