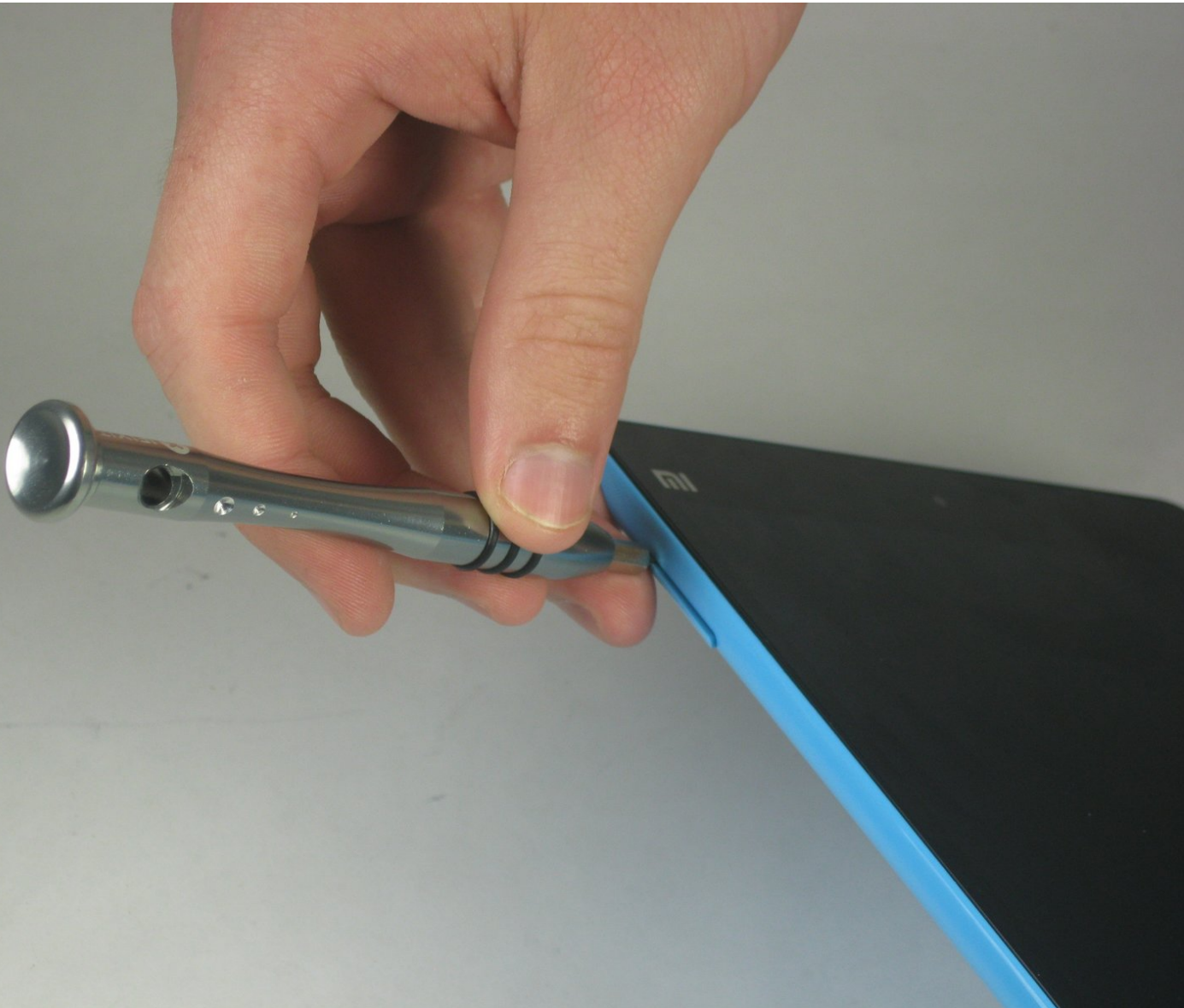




# Xiaomi Mi Pad Rear Case Assembly Replacement

Remove the rear case assembly on your Xiaomi Mi Pad.

Written By: Kiefer Sivitz



## INTRODUCTION

Use this guide to remove the rear case assembly from your Xiaomi Mi Pad.

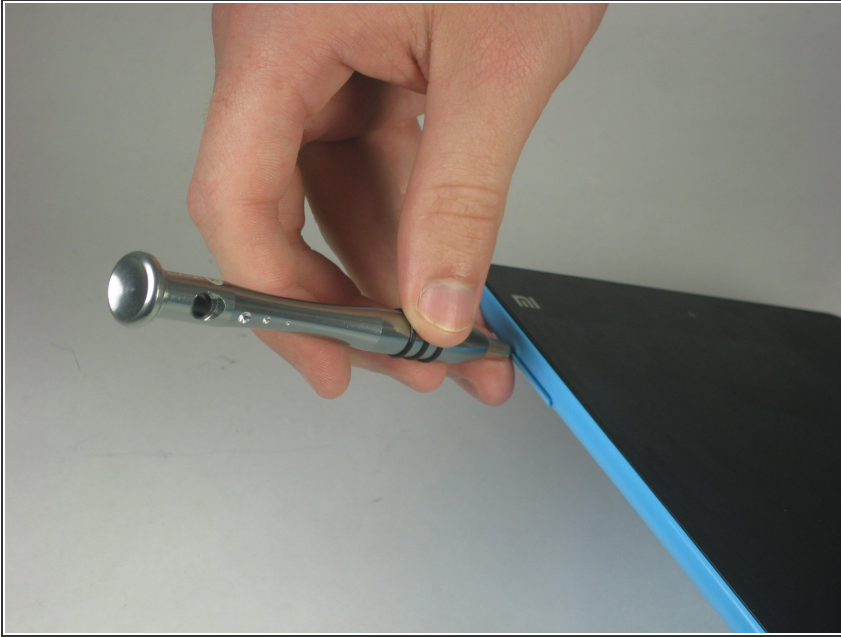
The plastic back panel needs to be removed before performing any hardware repairs.



### TOOLS:

- [iFixit Opening Tools](#) (1)
  - [SIM Card Eject Tool](#) (1)
-

## Step 1 — Rear Case Assembly




- Remove the micro SD card slot from the left side of the device using either the metal pin included with the device or a SIM card eject tool.

## Step 2



- Use a plastic opening tool and/or opening pick to gently pry the back panel away from the device. Work your way around the device, slowly increasing the gap.

 The back panel has small clips and light adhesive that easily releases from the device.

To reassemble your device, follow these instructions in reverse order.