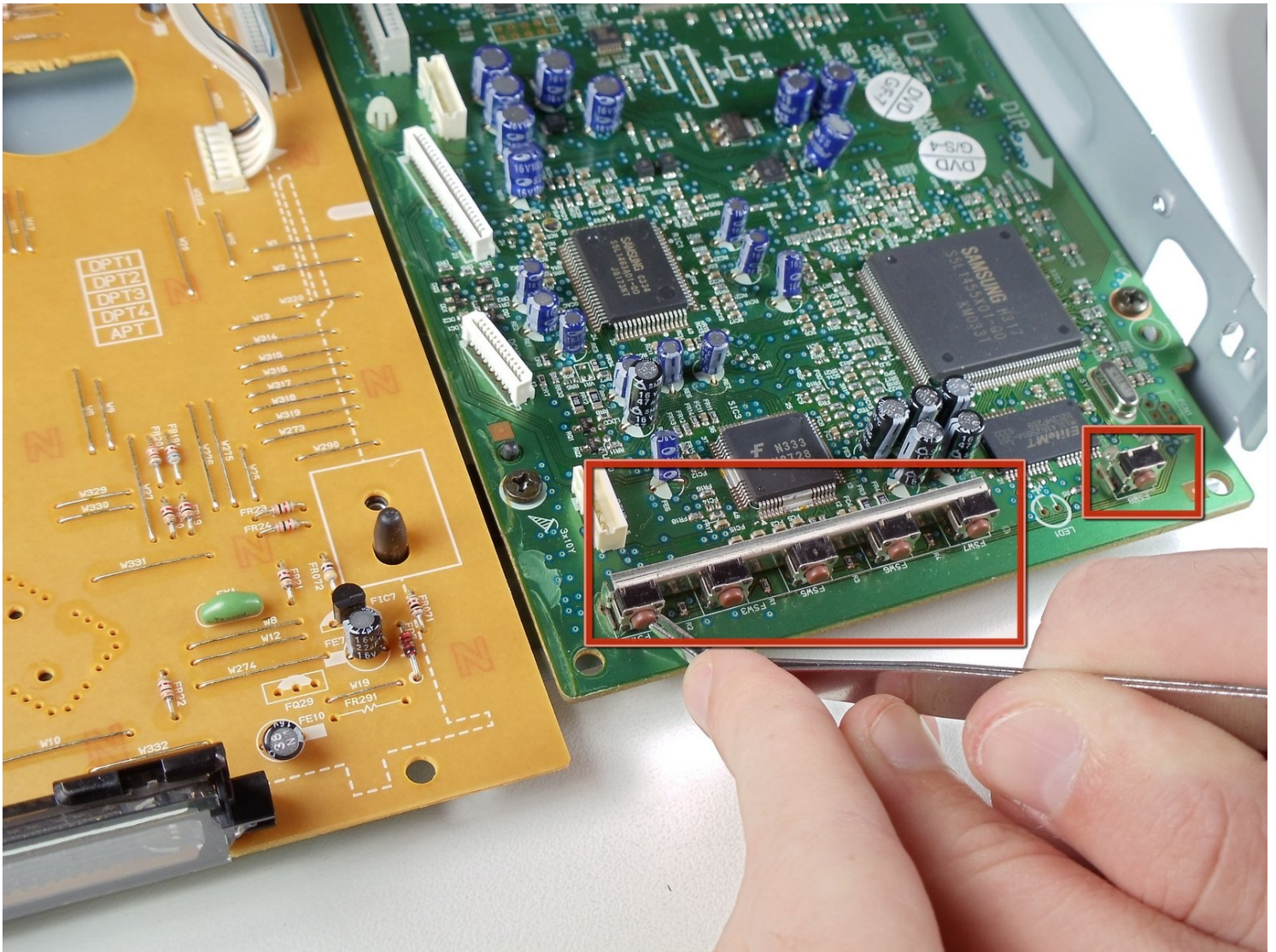




# How to check or clean Samsung DVD-P230 buttons

Written By: Mitchell Hart



## TOOLS:

Phillips #2 Screwdriver (1)

### Step 1 — Outer Cover & Faceplate



- Open the tray by pressing the eject button
- Remove the DVD tray faceplate by pushing the faceplate up off of the tray.

### Step 2



- Press the eject button to insert the tray
- After the tray is closed unplug DVD player



### Step 3



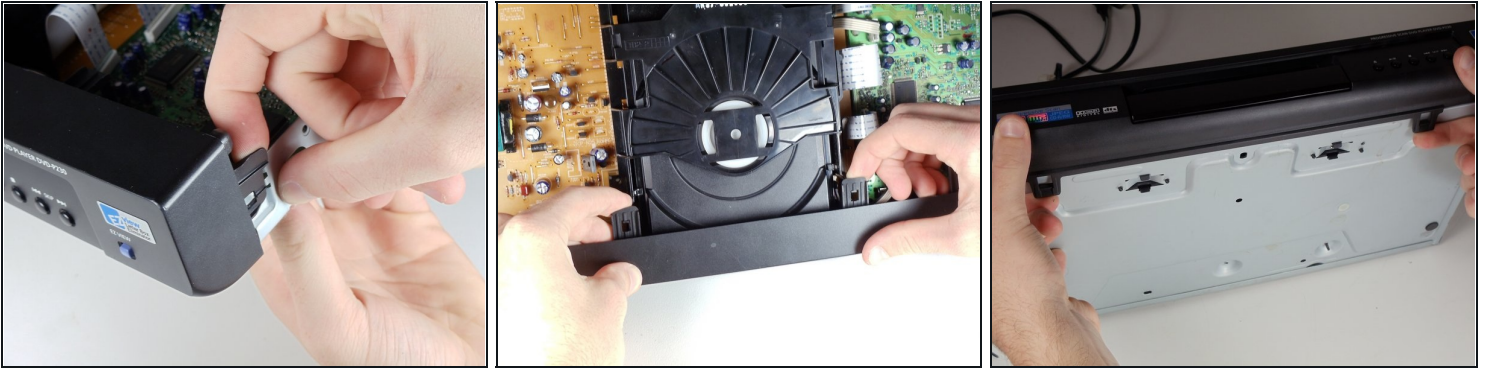
- Unscrew the 3 screws in the back.

### Step 4



- Pull the outer case upward and then towards you.

## Step 5



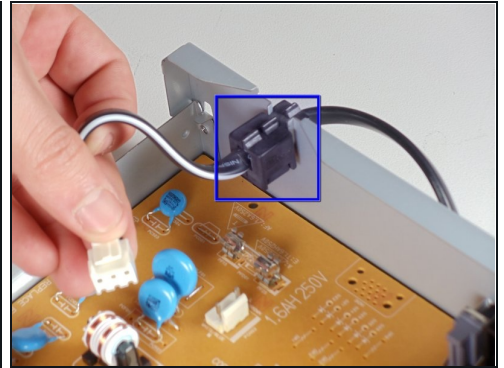
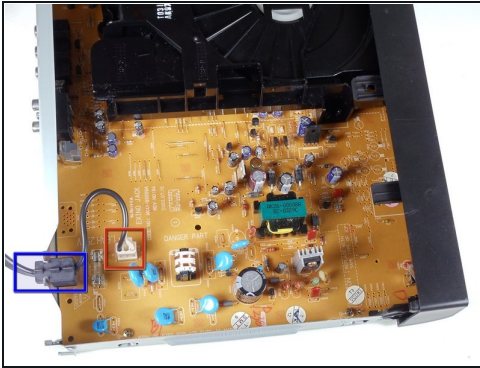
- There are six symmetrically placed tabs holding in the front faceplate. Unhook these six tabs to loosen the faceplate.

## Step 6



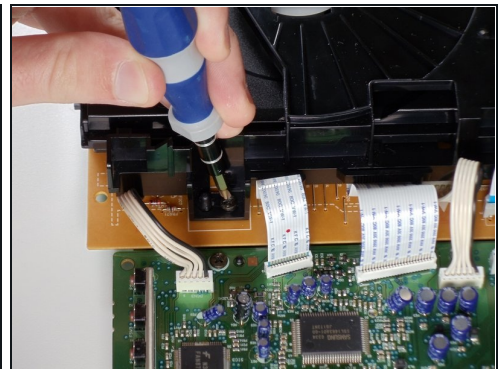
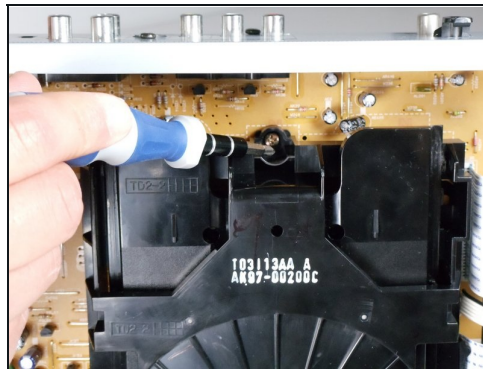
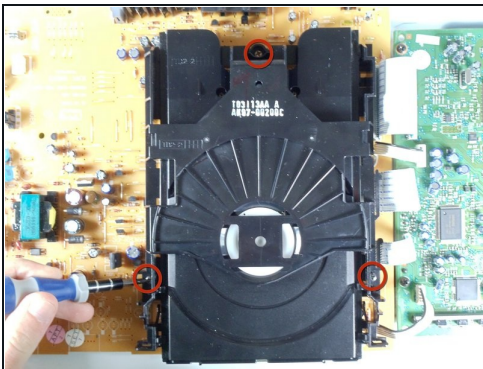
- Pull off front faceplate. This may take a couple of tries to get all six tabs unhooked simultaneously.

## Step 7 — Power Cord



- Locate the white clip that attaches the cord to the motherboard
- Grasp clip and squeeze to release
- Lift up and remove power cord
- Slide cord mount from outer case

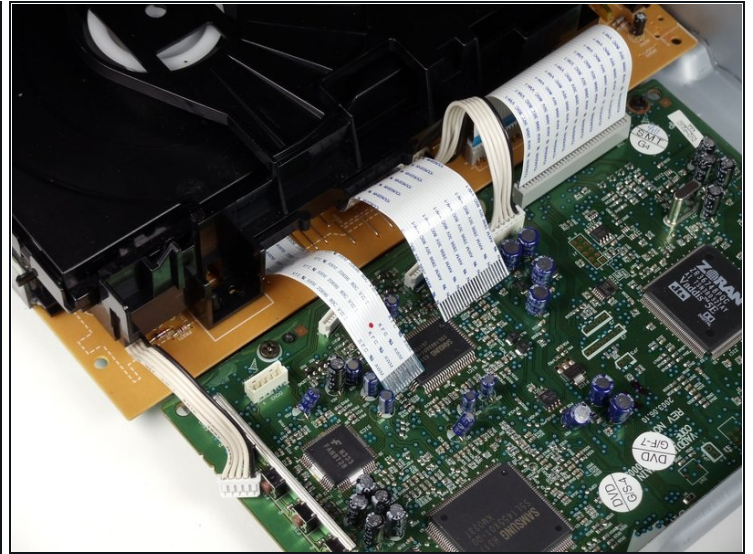
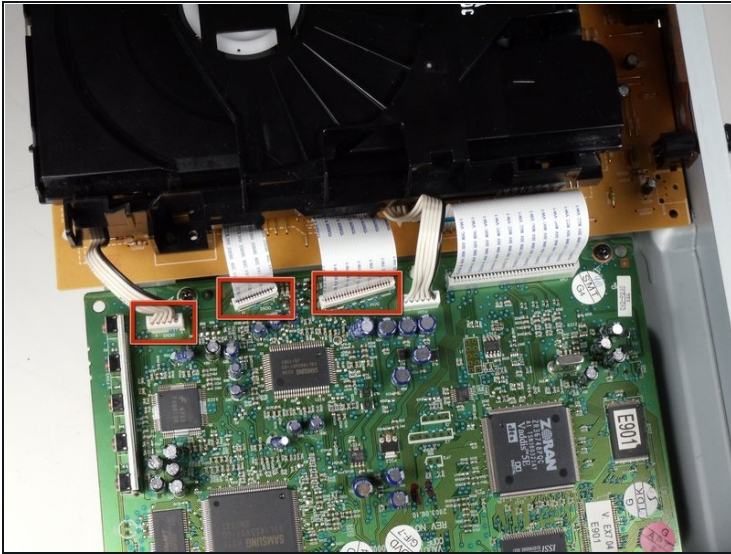
## Step 8 — Tray



- Remove the three screws holding in the DVD tray



## Step 9



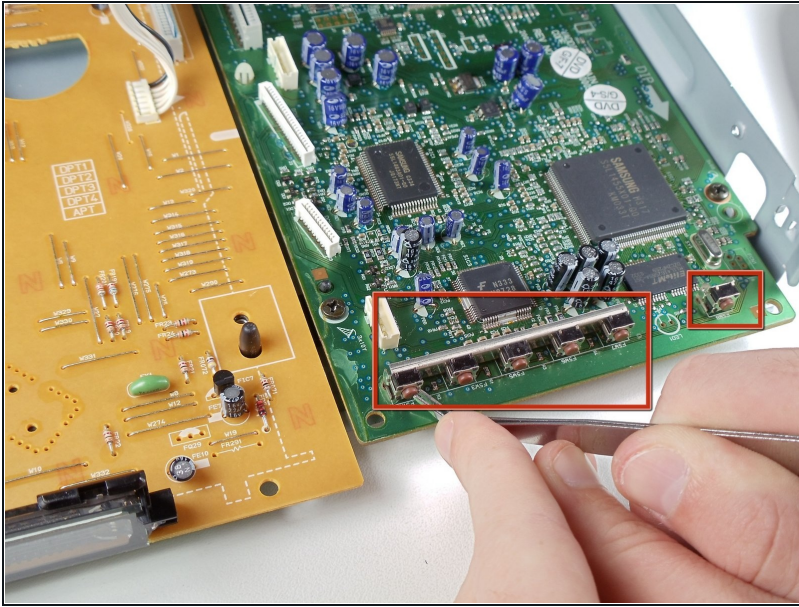
- Remove the power cord and first two ribbons by pulling them directly out of their sockets.

## Step 10



- Gently lift the DVD tray off of the motherboard.

## Step 11 — How to check or clean Samsung DVD-P230 buttons



- Use the tweezers to make sure all the buttons aren't stuck.

---

To reassemble your device, follow these instructions in reverse order.