



# Samsung SGH-X495 Face Plate Replacement

How to take the faceplate off of the Samsung SGH-X495

Written By: Matthew Hove



# INTRODUCTION

## Introduction

This guide will teach readers on how to replace the face plate of their Samsung SGH-X495. It will explain how to identify push pins and tabs and also how to remove them.



## TOOLS:

- [Phillips #00 Screwdriver](#) (1)
  - [iFixit Opening Tools](#) (1)
-

## Step 1 — Face Plate



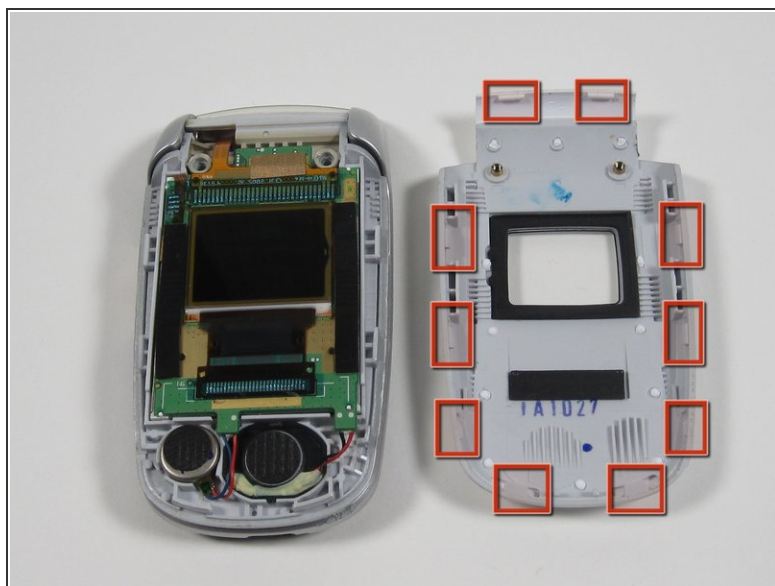
- First, remove the 2 silver stickers (as indicated by the circles) with a safety or push pin to reveal 2 screws.

## Step 2



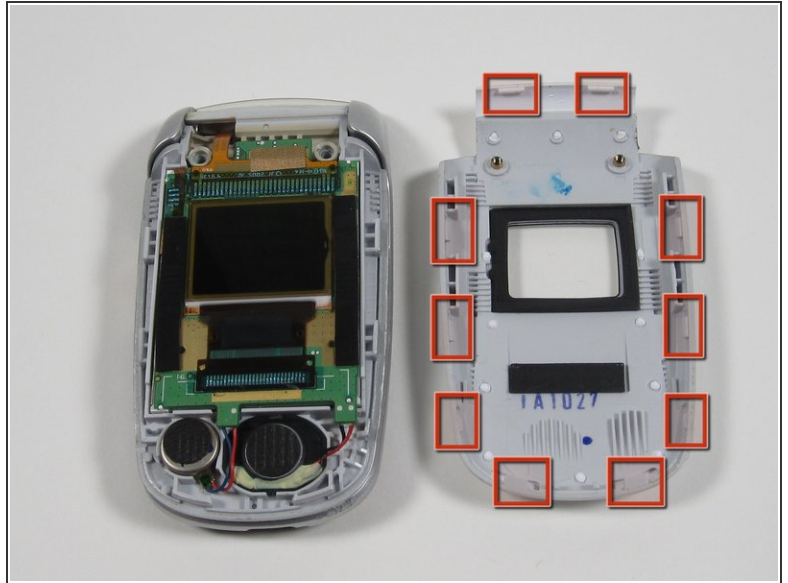
- Remove the 2 (5.6 mm) philips head screws with your safety or push pin.

## Step 3



- As shown above, with a plastic pry tool, begin working at the top corner and down each side. The face plate has 10 tabs that hook into the phone's body.
- Before removing the 2 tabs on the bottom, the 3 tabs on either side must be free first.
- Note: The bottom 2 are the most challenging to remove.
- Note: When reassembling start with the bottom two tabs.

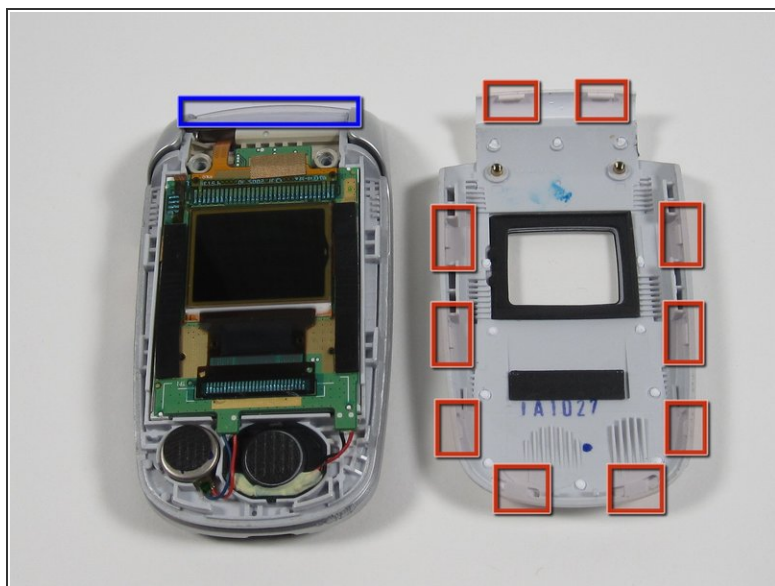
## Step 4



- Continue down each side toward the bottom with your pry tool.
- Note: It may help to use multiple pry tools to help hold it open.
- Second photo: location of the tabs.



## Step 5



- With 8 tabs released, the face plate is nearly free.
- With the phone in your left hand, gently wiggle the face plate from side to side and push the face plate upward.
- Note: A strip of double sided tape holds the faceplate, so expect some resistance

To reassemble your device, follow these instructions in reverse order.