



Starbucks Barista Pump Replacement

This guide will teach you how to replace the Barista pump.

Written By: Alex



INTRODUCTION

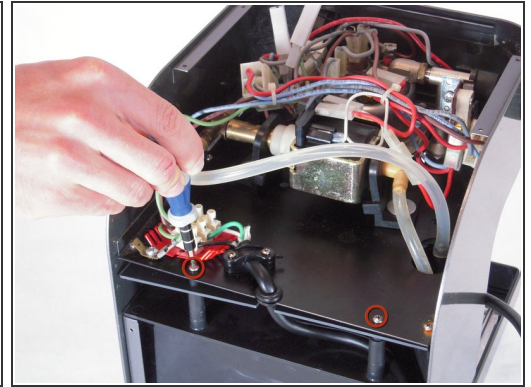
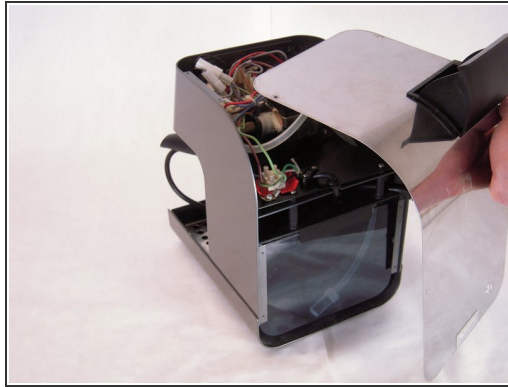
The pump is used to take the water from the reservoir to the portafilter and steam wand.



TOOLS:

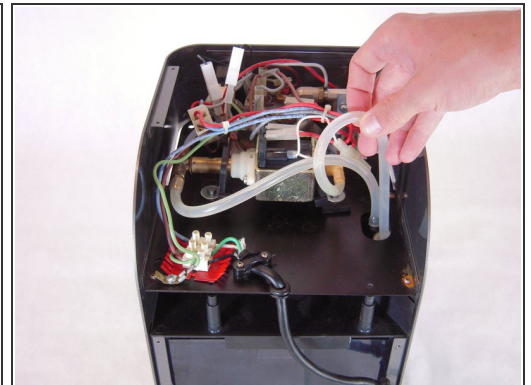
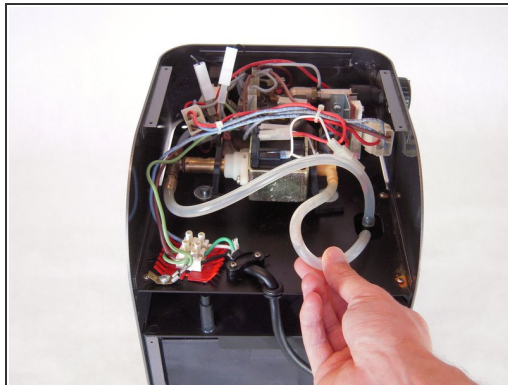
- [Phillips #1 Screwdriver](#) (1)
 - [Flathead Screwdriver](#) (1)
 - [Adjustable Wrench](#) (1)
-

Step 1 — Pump



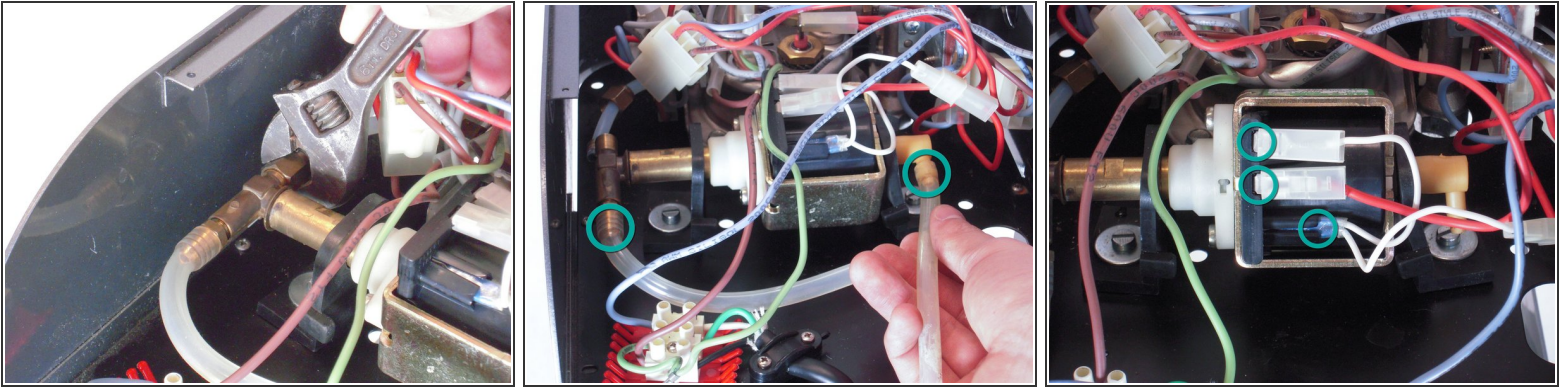
- First remove all six screws on the back panel.
- Remove the back panel, then set it aside.
- Remove the two screws holding the bottom panel in place.
- Remove the bottom panel, then set it aside.

Step 2



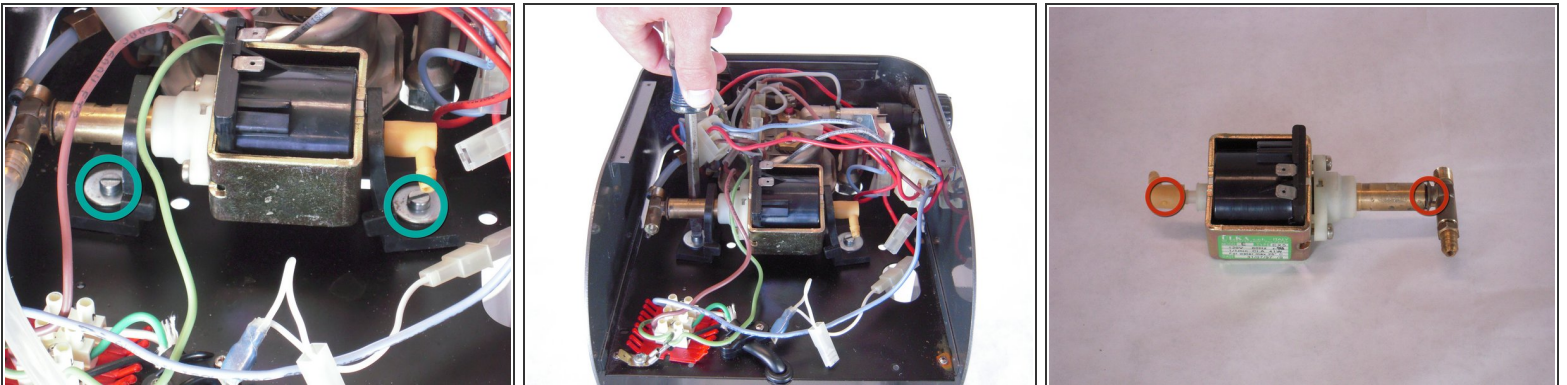
- Pull the drip tray out, then set it aside.
- Turn the brew unit clockwise to unscrew.
- Pull the tube that goes into water reservoir out.
- Slide the water reservoir out through the front of the barista to remove it.
- Remove the top tray from the backside.

Step 3



- Use an adjustable wrench to unscrew the connection tube between the pump and the boiler.
- Pull off both tubes connecting on each side of the pump.
- Remove the 3 electrical connectors from the pump.

Step 4



- Unscrew the two mounting bolts.
- Remove the pump unit from the Barista.
- Pull off the yellow end of the pump and unscrew T-shaped end.
- See the links section of the device page for where to purchase a new pump.

To reassemble your device, follow these instructions in reverse order.