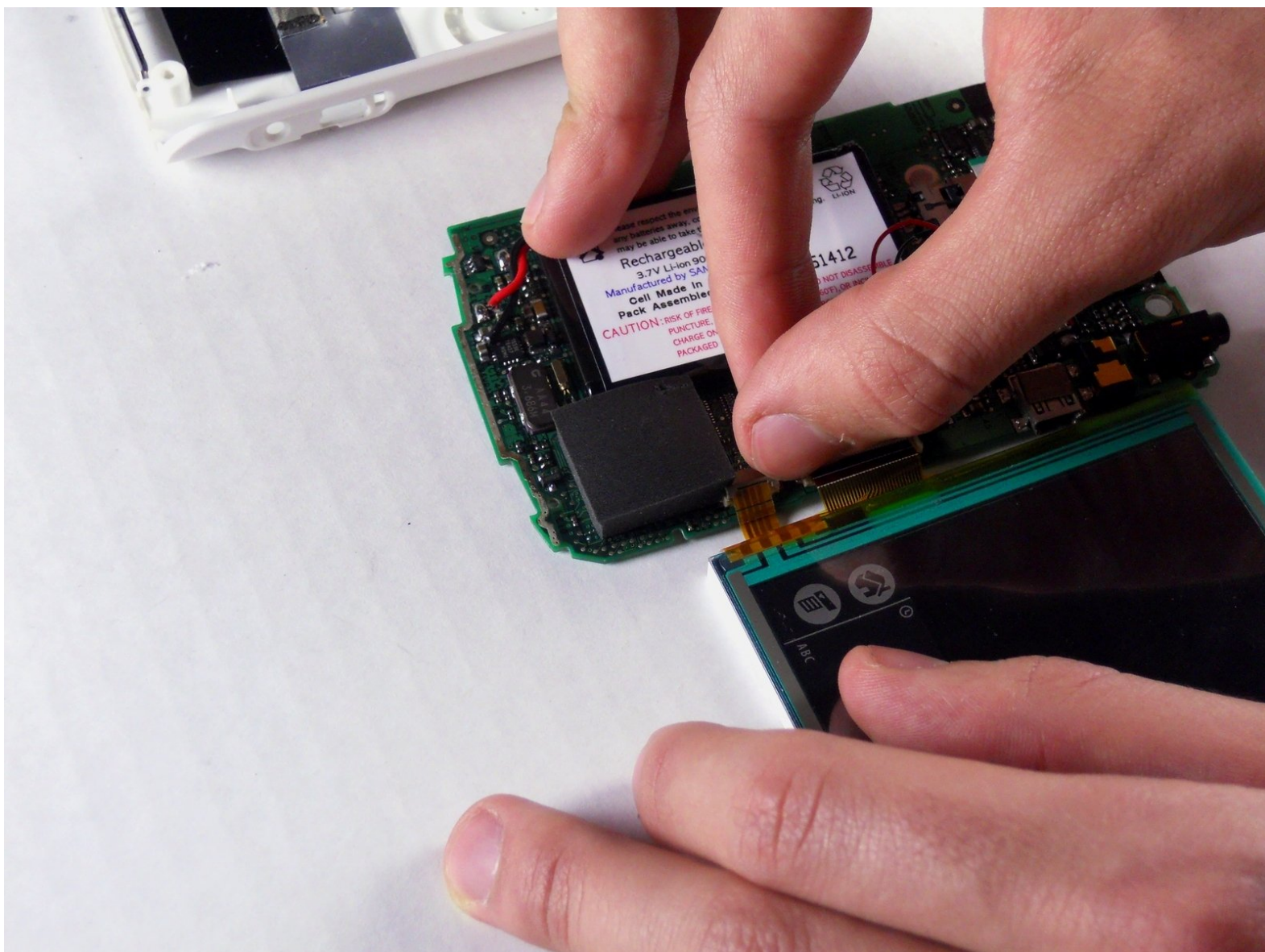




Palm Zire 31 Screen Replacement

This guide will teach you how to replace your broken screen.

Written By: Gabe



INTRODUCTION

If you know that your screen needs to be replaced, this guide will show you how to do so.

TOOLS:

- [Phillips #00 Screwdriver](#) (1)
 - [Spudger](#) (1)
 - [T6 Torx Screwdriver](#) (1)
-

Step 1 — Case



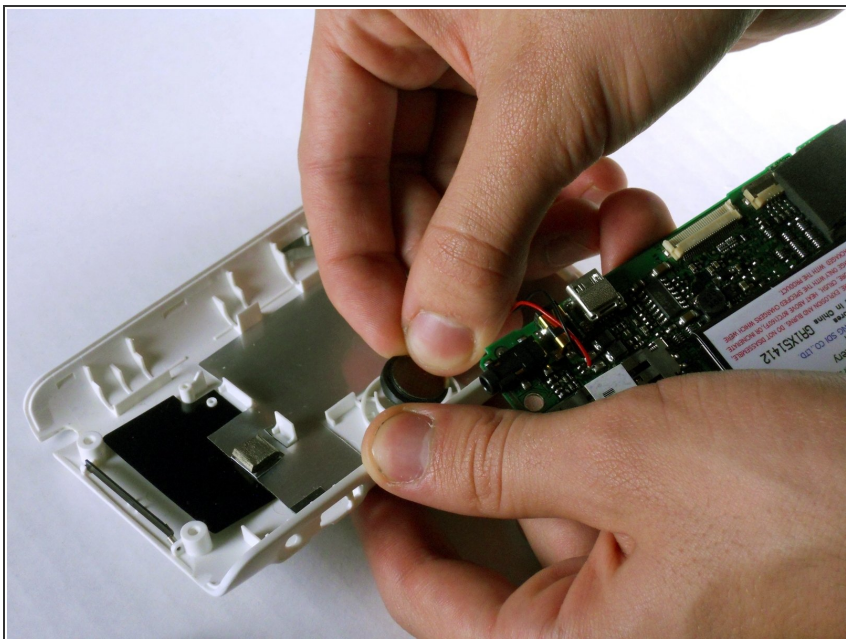
- Unscrew the two 7.35mm Torx T6 screws.

Step 2



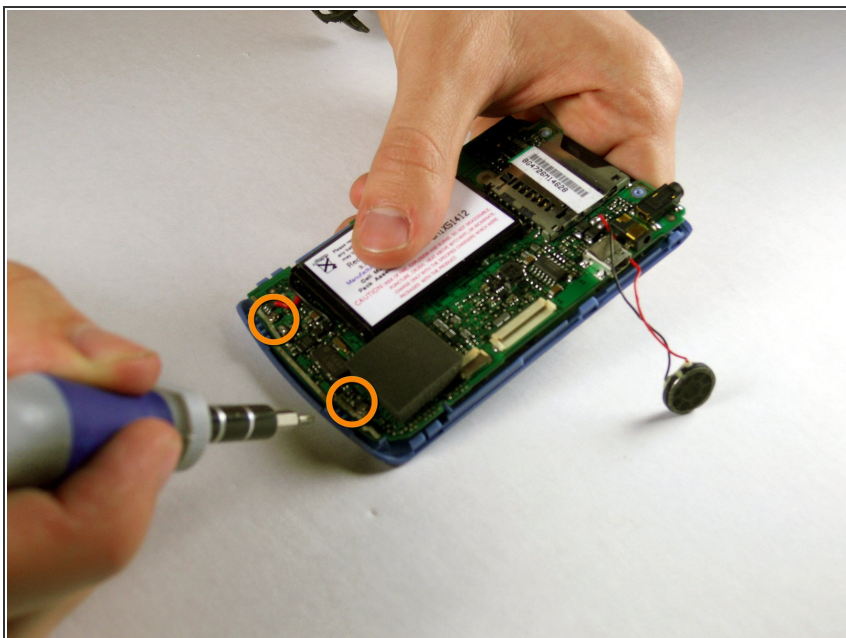
- Using the flat end of the spudger, carefully pry the black cover on the top from the blue front cover.

Step 3



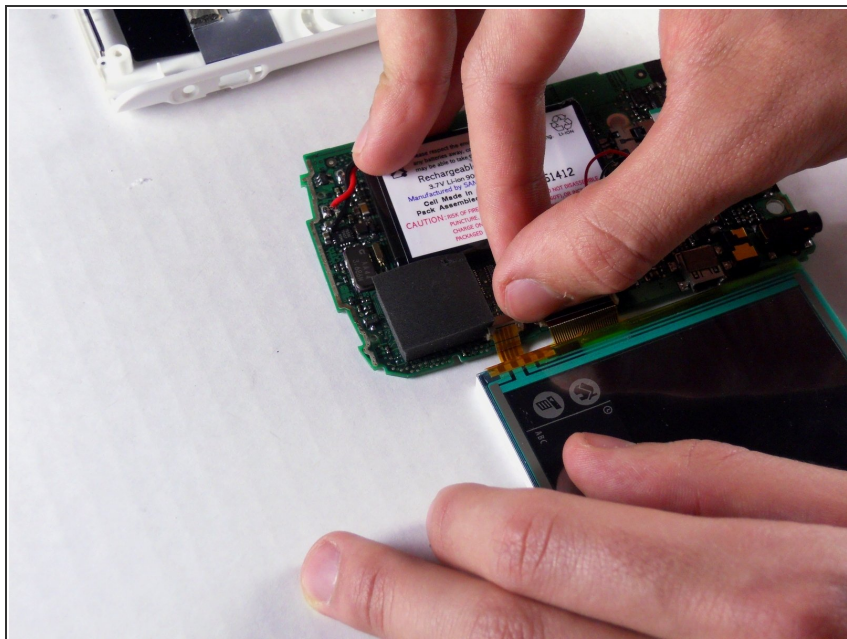
- Carefully remove the speaker from the back white cover by just pulling it gently. It is glued on.

Step 4



- Unscrew the #00 5.75mm Phillips screws from the bottom of the motherboard. The front blue panel should fall right off.

Step 5 — Screen



- Carefully pull back the brown cable holders and separate the screen from the motherboard.

To reassemble your device, follow these instructions in reverse order.