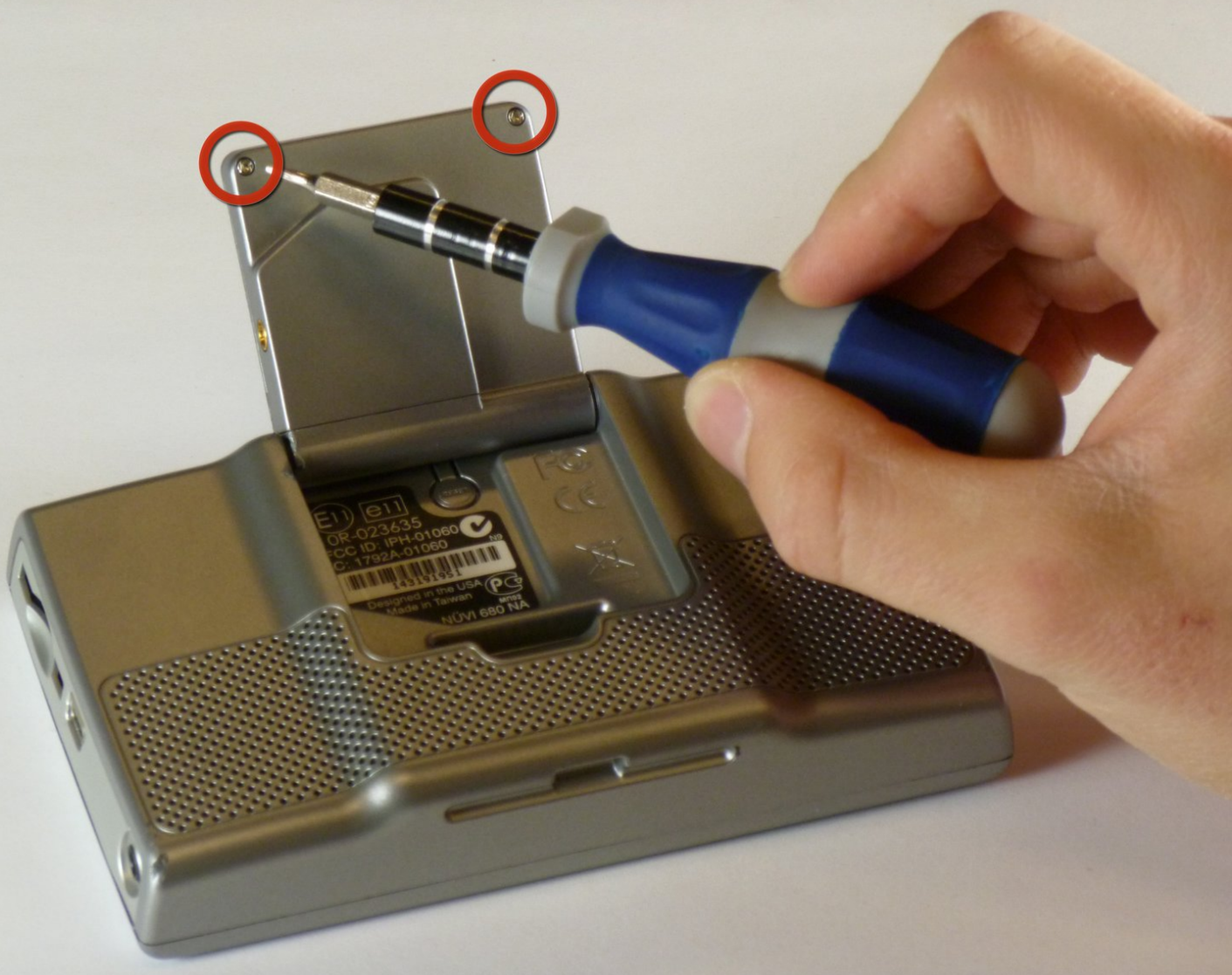




Disassembling Garmin Nuvi 680 Outer Case

A step-by-step guide to removing the outer case of the Garmin Nuvi 680.

Written By: Chris Marzano



INTRODUCTION

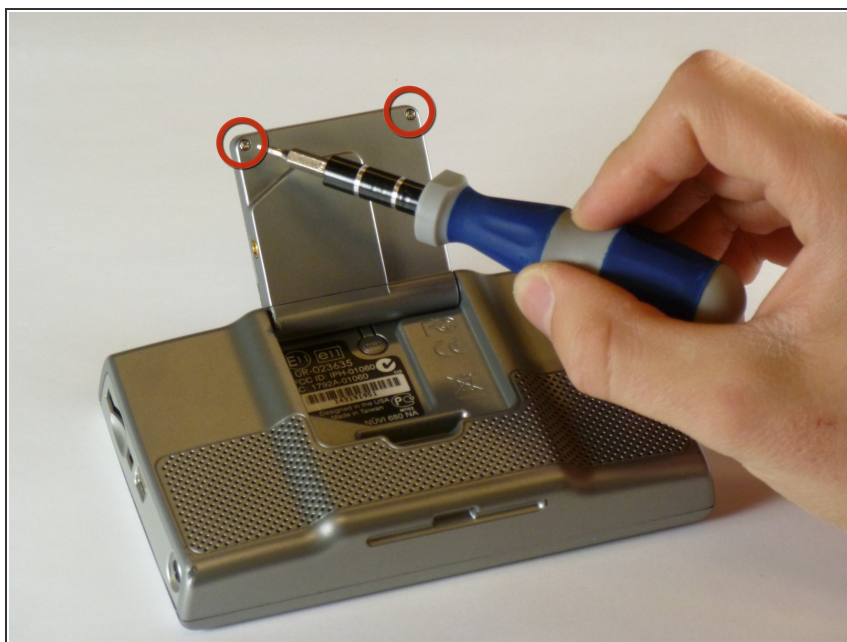
A step-by-step guide to removing the outer case of the Garmin Nuvi 680.



TOOLS:

- [T5 Torx Screwdriver](#) (1)
 - [Spudger](#) (1)
 - [iFixit Opening Tools](#) (1)
-

Step 1 — Outer Case



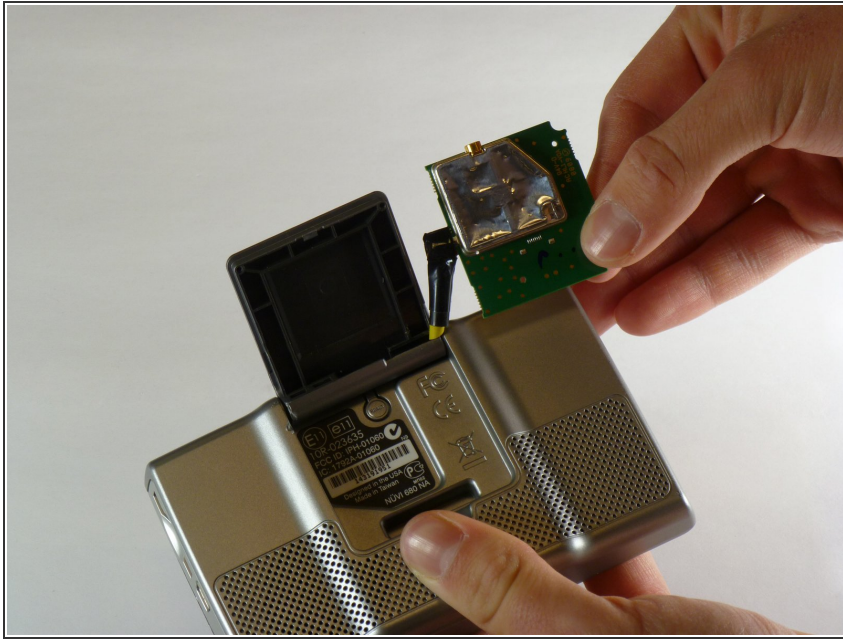
- Flip open the antenna on the back of the device.
- Remove the two 4.42 mm screws on the antenna cover using a T5 Torx screwdriver.


Step 2



- Remove the antenna cover.

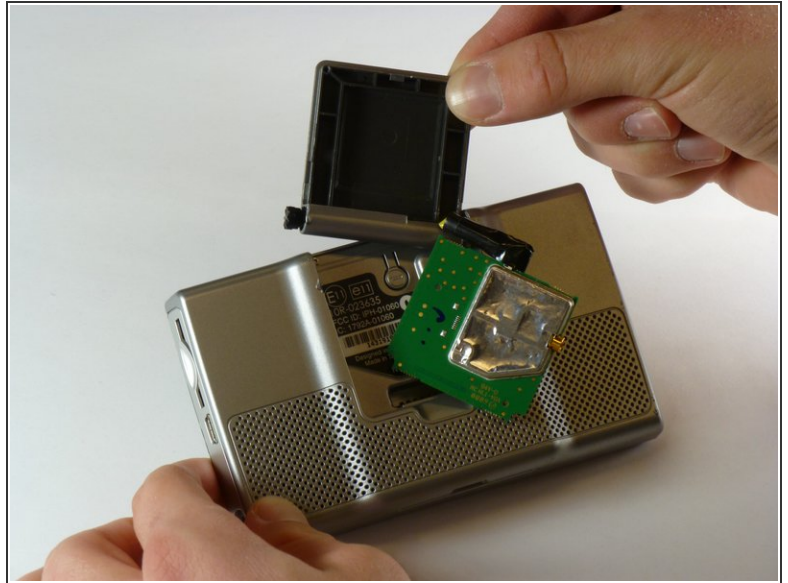
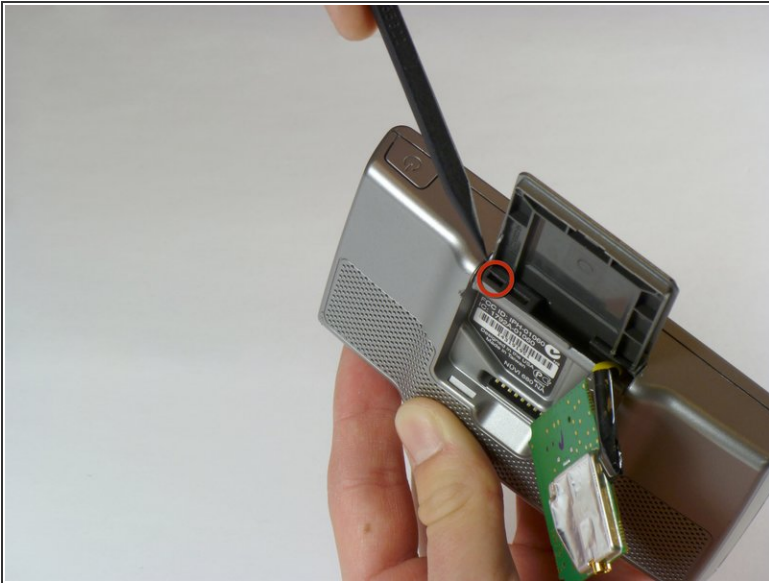
Step 3



 The yellow wire is connected to the motherboard, so you cannot disconnect it until you finish opening the device.

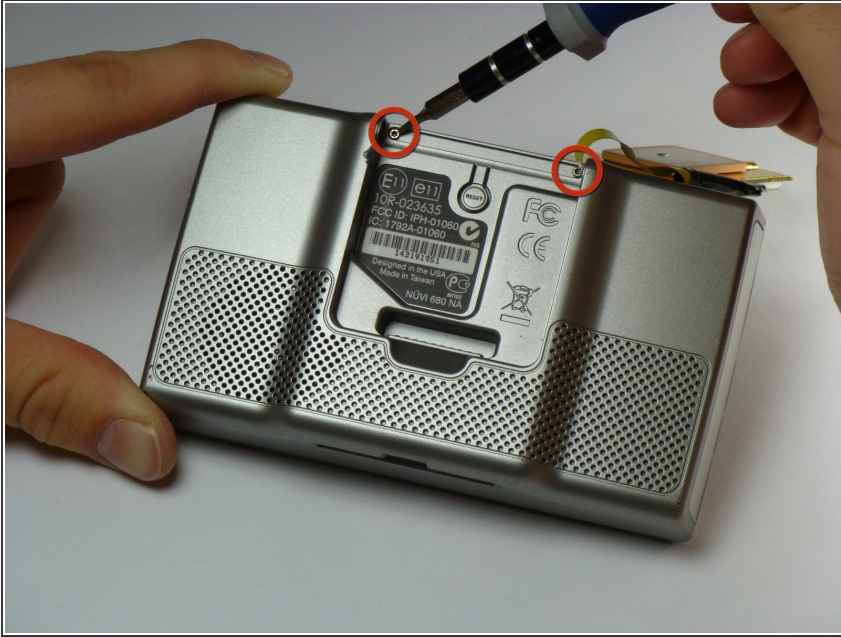
- Pull the antenna circuit board out of its case.

Step 4



- Insert the pointed end of a spudger into the leftmost slit of the antenna case.
- Push the spudger to the right.
- ⚠ Slide the antenna case out slowly or you may lose the antenna's spring. The spring is inside the black plastic that holds the antenna case to the device.
- Slide the antenna case out of the device.
- 🔧 Reinstallation tip: first reassemble the antenna casing (place antenna back into its plastic cover), and then re-insert the entire assembly back into the GPS body.


Step 5



- Remove the two screws on the back of the outer case using a T5 Torx screwdriver.
- These screws are 10.82 mm long.

Step 6



 Gently pull apart the front and back of the device. The front and back are still connected by ribbon cables.

- Starting along the top, separate the front and back of the device by pushing an iPod-opening tool into the crack along each side of the case.

To reassemble your device, follow these instructions in reverse order.