



Toshiba SD-K740 Front Panel Replacement

This guide gives instructions on how to remove...

Written By: Joe Murphy



INTRODUCTION

This guide gives instructions on how to remove the front panel of the Toshiba SD-K740 DVD player, a necessary step to access all parts for repair/replacement.



TOOLS:

- [Phillips #2 Screwdriver](#) (1)
-

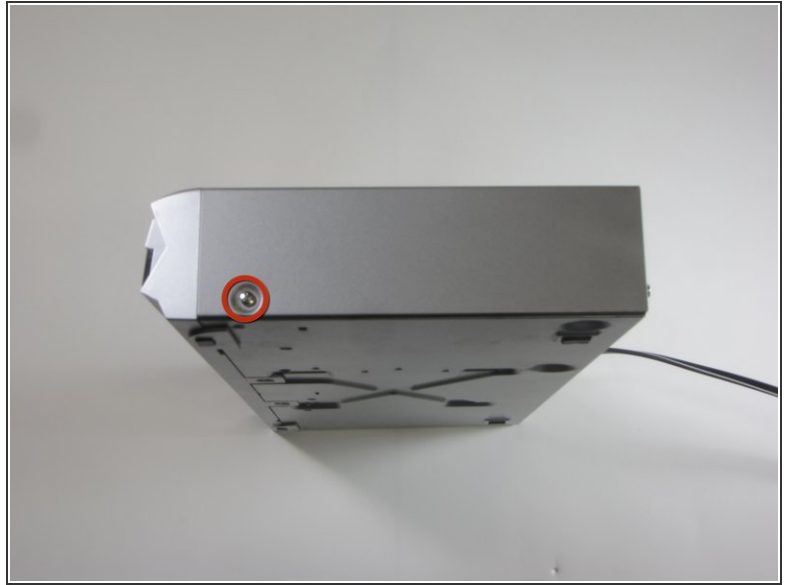
Step 1 — Top Panel



⚠ Unplug the DVD player before beginning.

- Remove the three 7.7 mm screws from the back panel using a Phillips #0 screwdriver.

Step 2



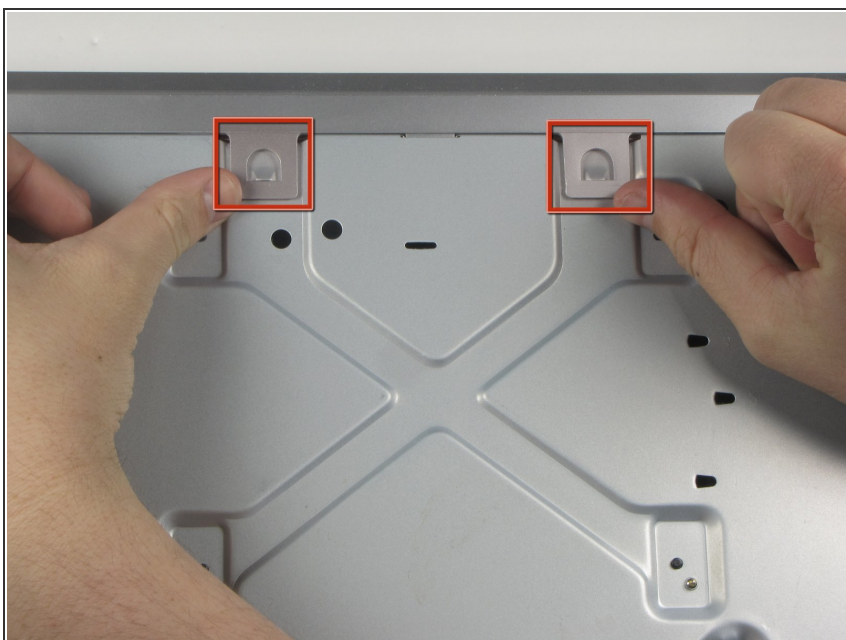
- Turn the DVD player on its side.
- Remove the 7.7 mm screw.
- Flip the DVD player onto its other side.
- Remove the 7.7 mm screw.

Step 3



- Flip the DVD player over onto its front face.
- Remove the back panel by lifting up and pulling it towards yourself.

Step 4 — Front Panel



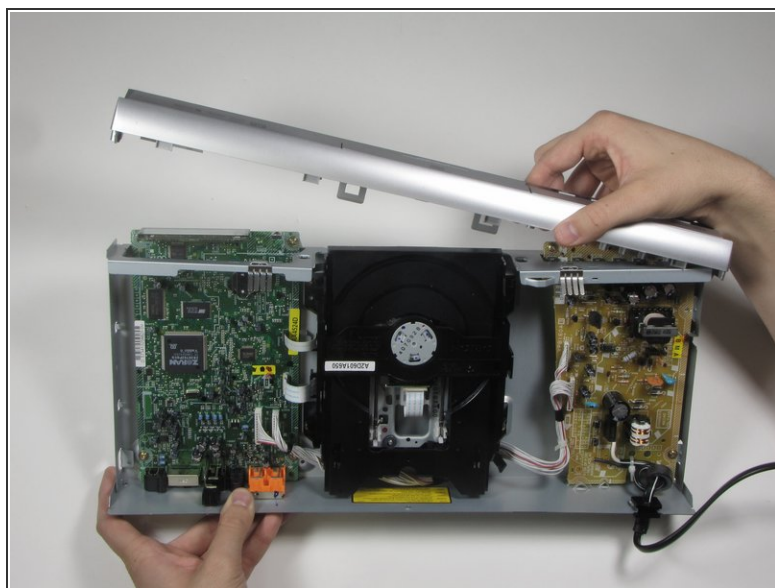
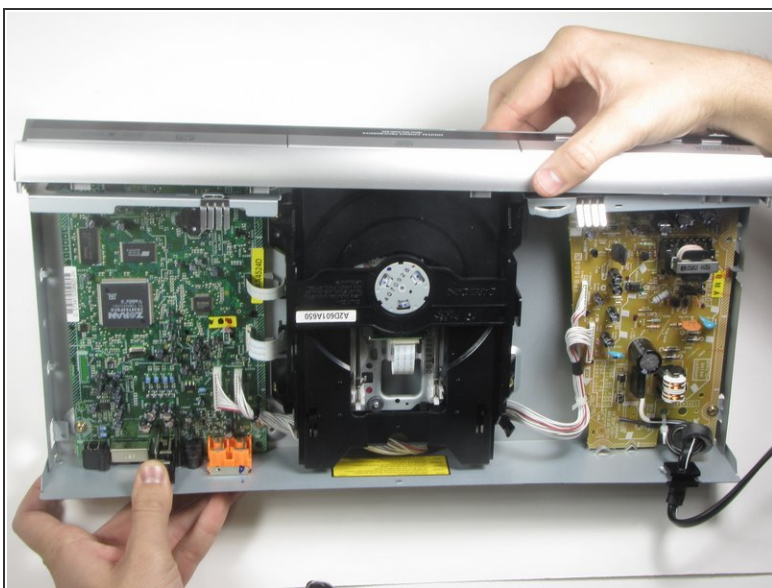
- ① Flip the DVD player so its top is sitting on your working surface.
- Lift and push away the two tabs located in the middle of the player.
- ⚠ The front panel will not detach during this step, so do not force it.

Step 5



- ❗ Flip the DVD player on its side.
- Lift and slide forward the single tab on the side.
- ⚠ The front panel will not detach during this step, so do not force it.

Step 6



- Grasp the front panel and pull forward to your right to remove it.

To reassemble your device, follow these instructions in reverse order.