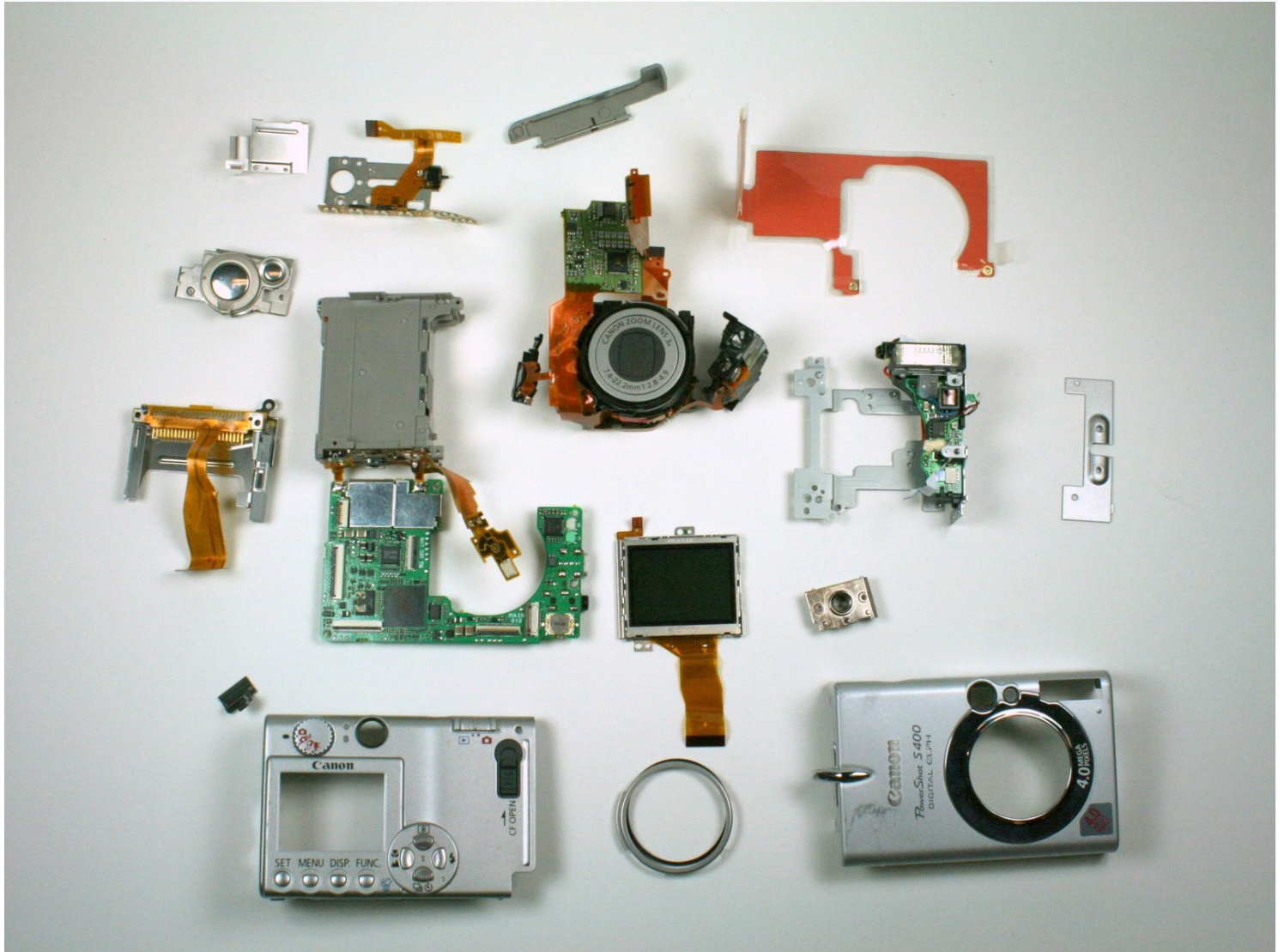




Canon PowerShot S400 Teardown

This guide outlines the steps in tearing down...

Written By: Justin



INTRODUCTION

This guide outlines the steps in tearing down your camera to its basic components.

TOOLS:

Phillips #00 Screwdriver (1)

Spudger (1)

Tweezers (1)

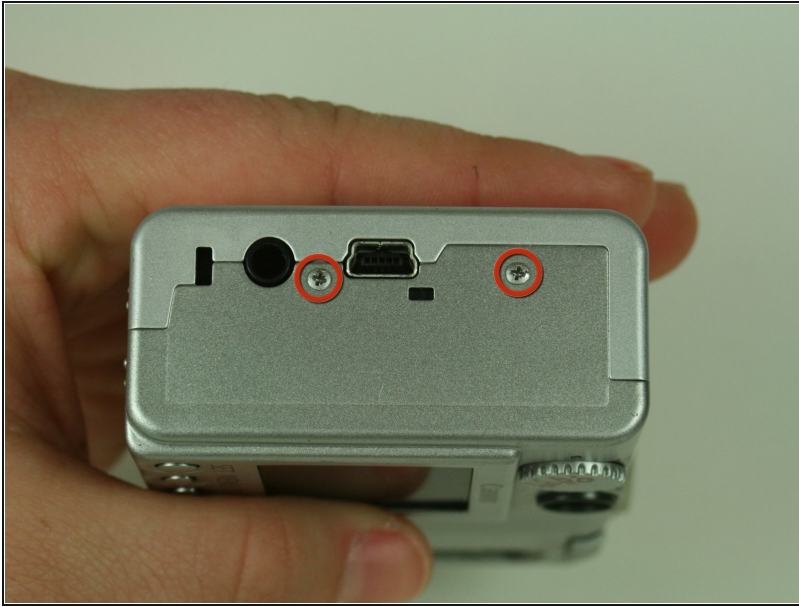
Step 1 — LCD Screen



 Unless stated otherwise, use a Phillips #00 screwdriver to remove all screws.

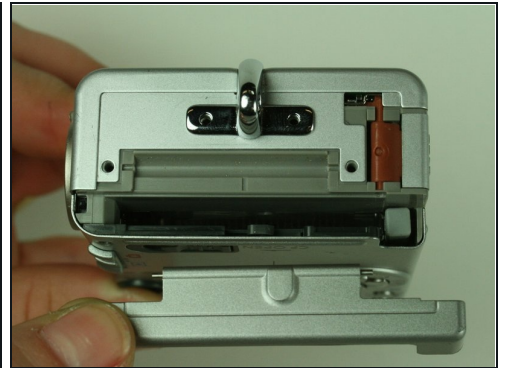
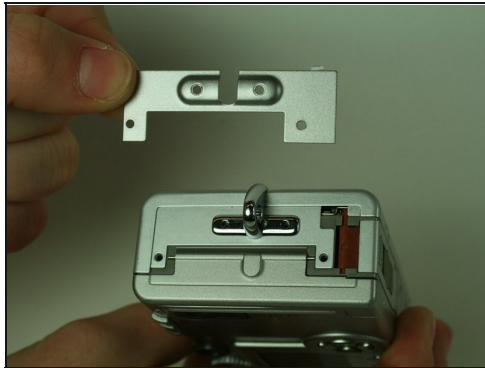
- On the backside of the camera, remove the 4.75 mm screw that sits at the top right corner.
- Remove the four 4.75 mm screws that sit at the bottom of the camera.

Step 2



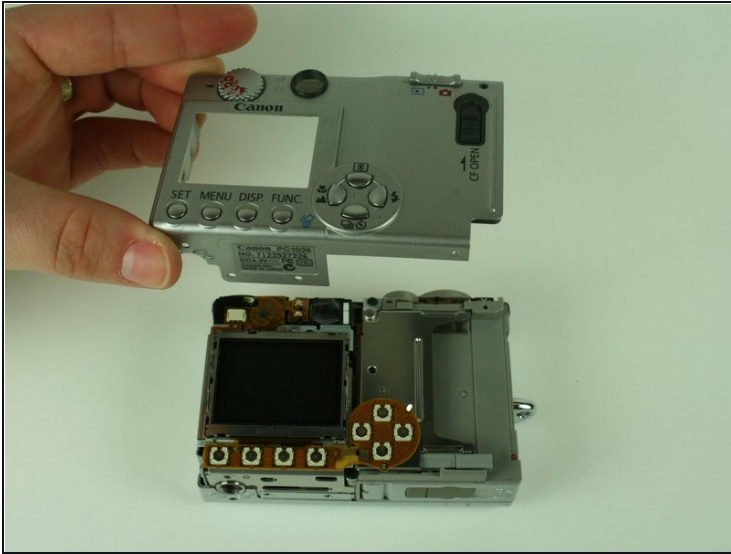
- On the side of the camera, remove the two 4.75 mm screws that sit near the USB digital terminal.

Step 3



- On the side of the camera, remove the four 4.75 mm screws that sit near the wrist strap mount.
- Remove the two small metal plates, which the four screws hold in place.

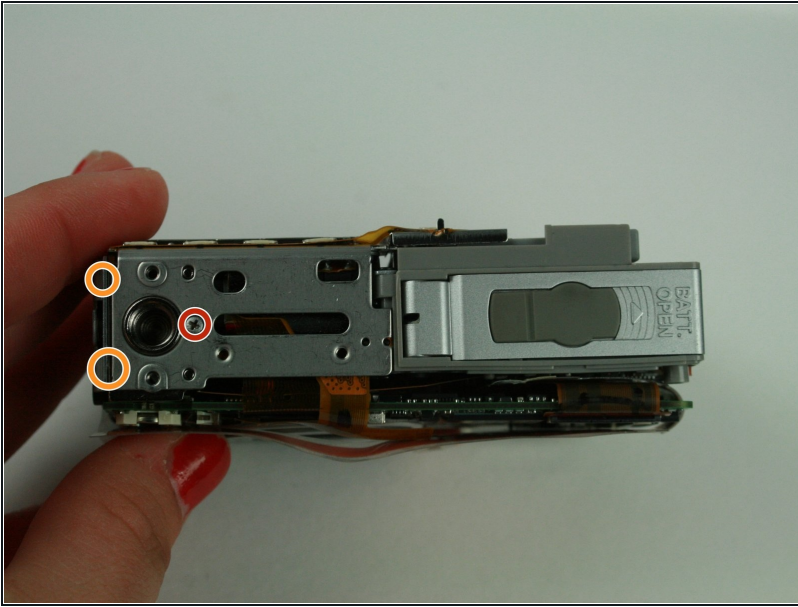
Step 4



⚠ When removing the casing, do not drop the small black plastic piece. This piece sits in a small gap above the lens, to the left of the flash, and underneath the camera case.

- Remove the small black plastic piece and set it aside. If necessary, use [tweezers](#) to remove the small black plastic piece.
- Detach the front case and back case.

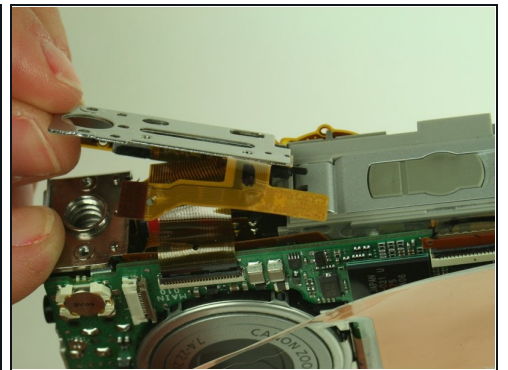
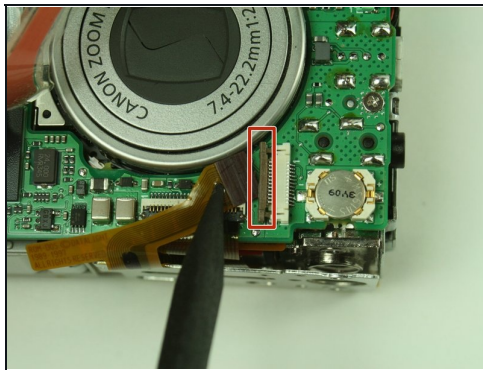
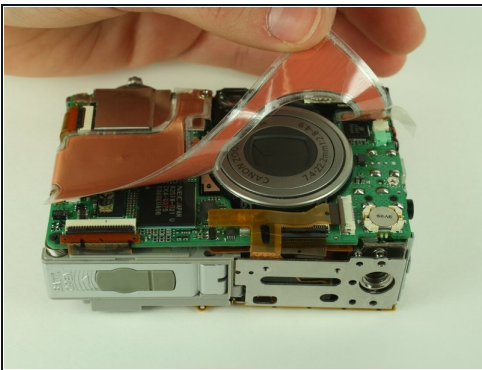
Step 5



⚠ Do not remove the metal plate this step refers to. Removal at this step may damage the ribbon cable. Wait until the next step to remove the plate.

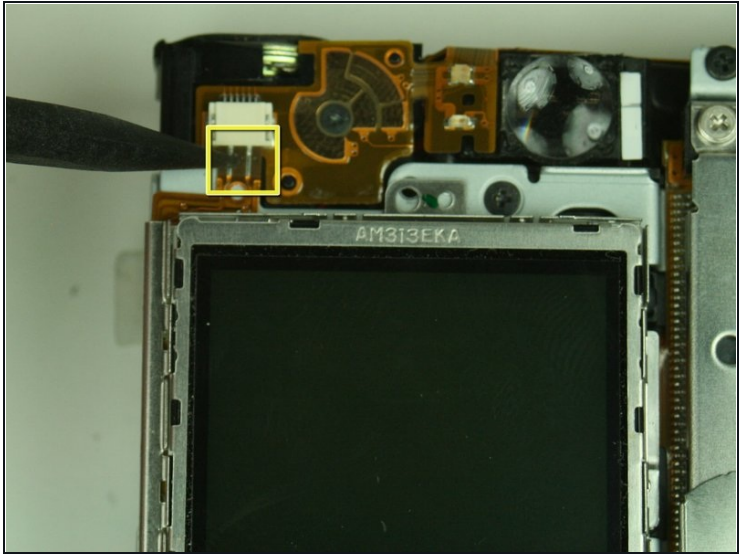
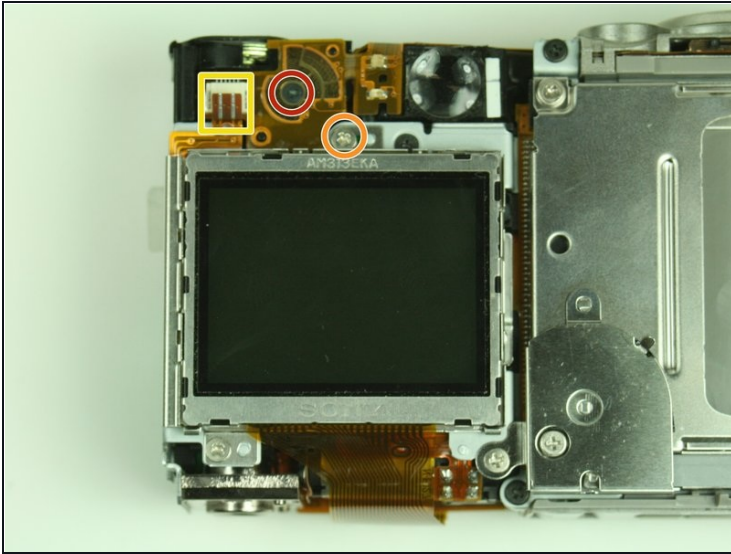
- Remove the 3.5 mm screw that sits on the metal plate at the bottom of the camera.
 - Remove the two other 3.5 mm screws that sit on the side, to the left of the screw you just removed.
- i In the image, we have already removed some of the screws.

Step 6



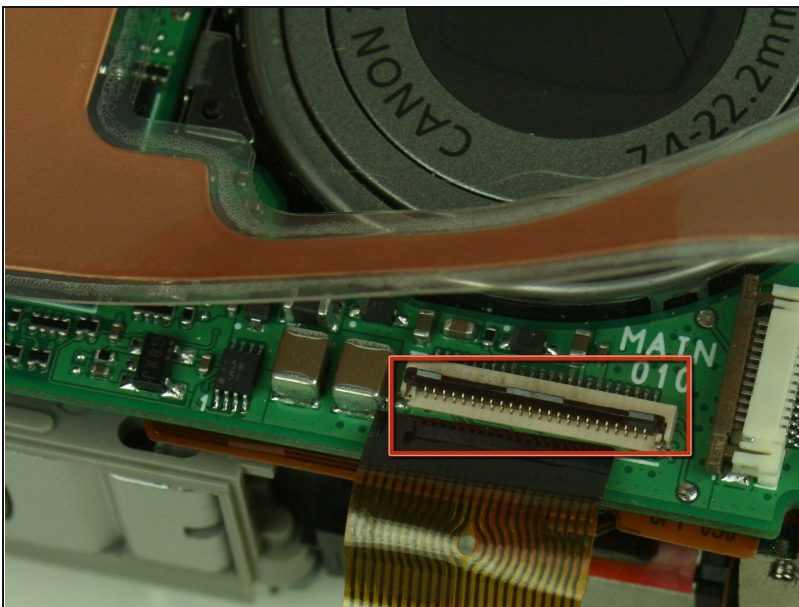
- A ribbon cable attaches to the metal plate and to the main circuit board, on the front of the camera.
- Gently release the black latch.
- Remove the ribbon cable and metal plate assembly.

Step 7



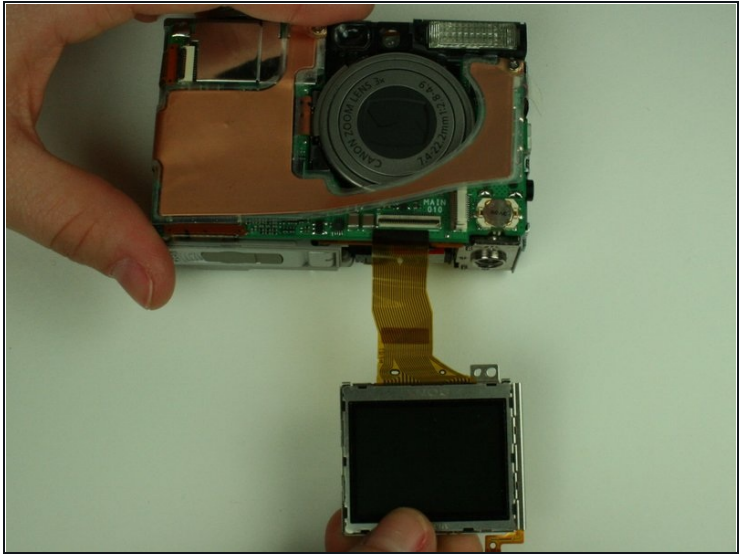
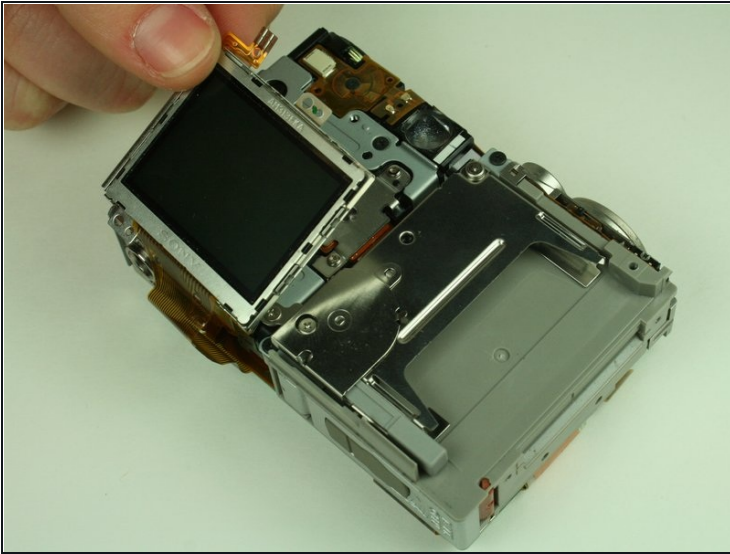
- On the backside of the camera, remove the 3.5 mm screw that sits to the left of the viewfinder and above the LCD screen.
- Remove the second 3.5 mm screw that sits directly above the LCD screen.
- Gently detach the ribbon cable.

Step 8



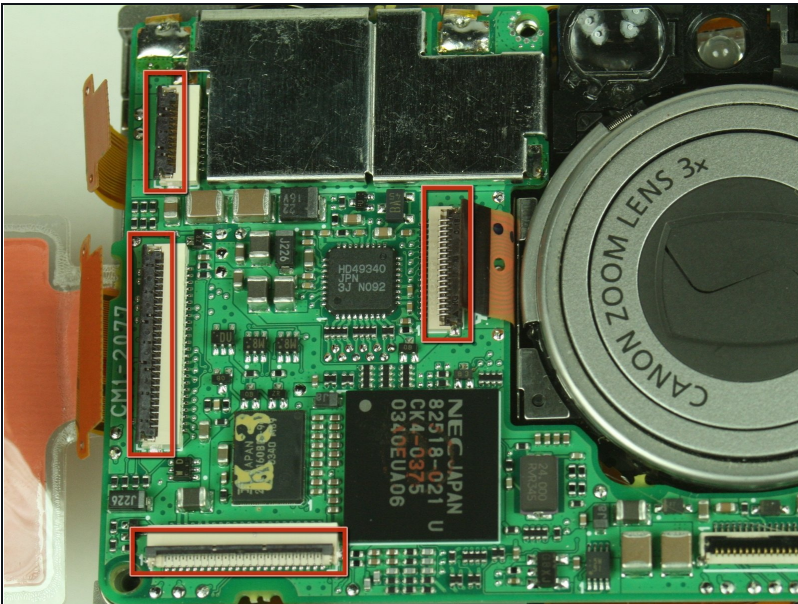
- Locate the ribbon cable on the main circuit board, which sits below the lens.
- Gently release the black latch on the ribbon cable connector and detach the ribbon cable.

Step 9



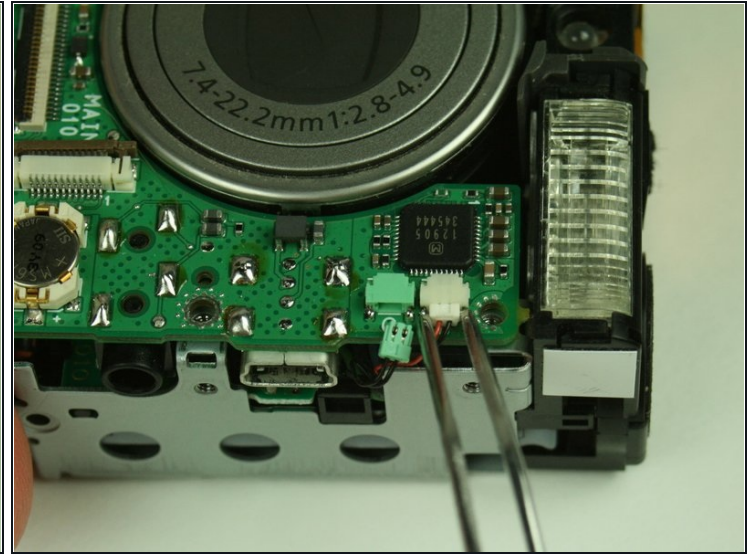
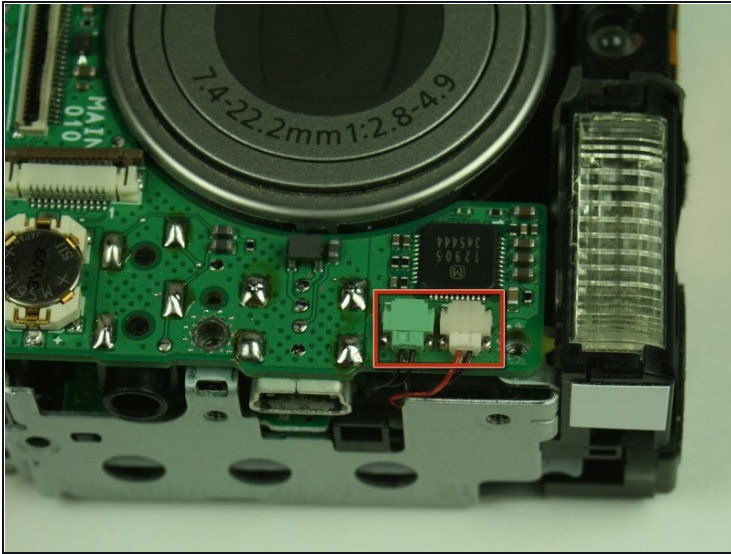
- Remove the LCD screen and set it aside.

Step 10 — Motherboard



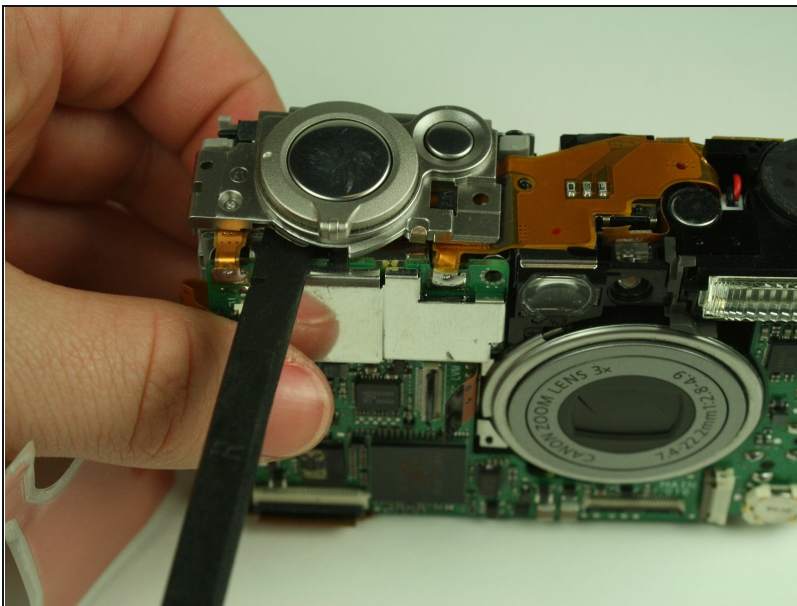
- On the main circuit board, gently release the black latches of the four ribbon cables.
- Gently detach the ribbon cables.

Step 11



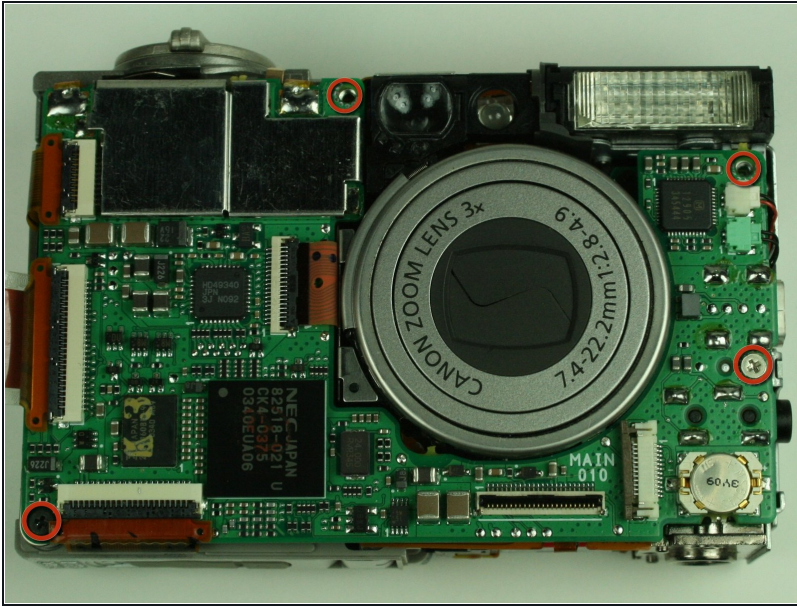
- Detach the white-capped and green-capped wires, which sit near the flash.

Step 12



- Using a spudger, gently detach the shutter button assembly from the camera.

Step 13

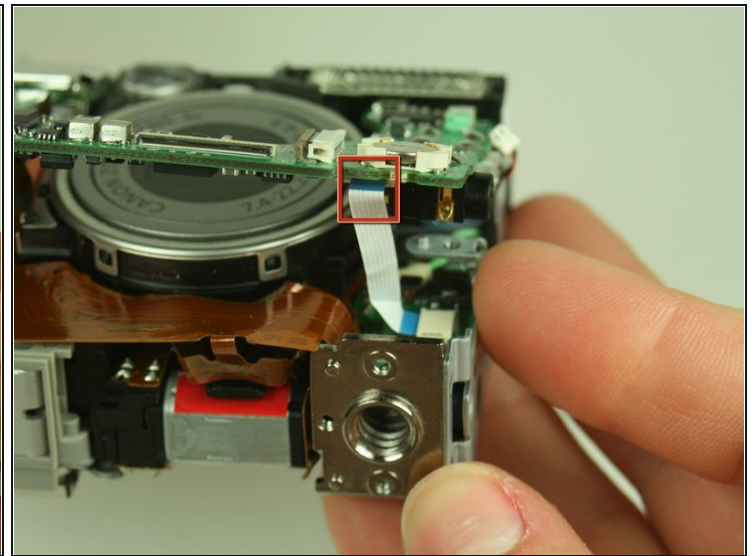
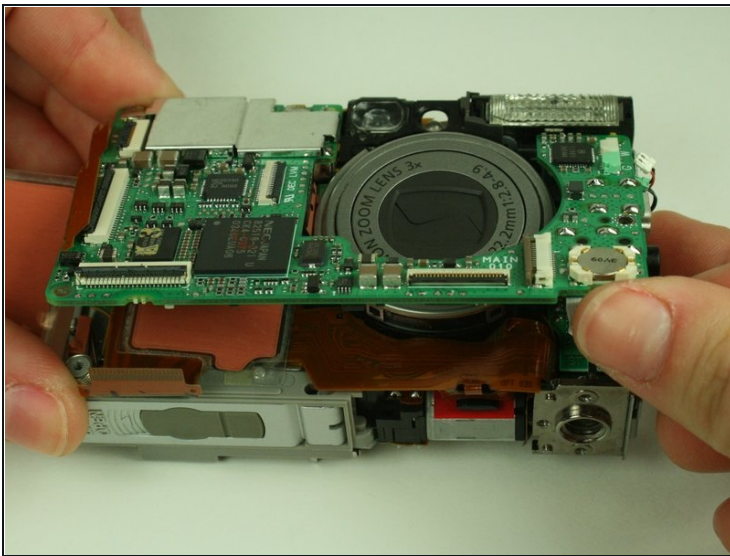


- Remove the four 3.5 mm screws that hold the main circuit board.

ⓘ In the image, we have already removed some of the screws.

⚠ Do not remove the main circuit board yet.

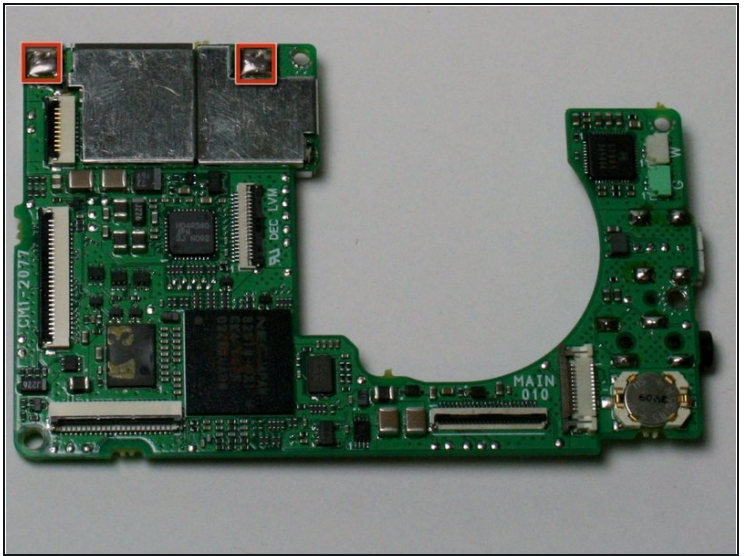
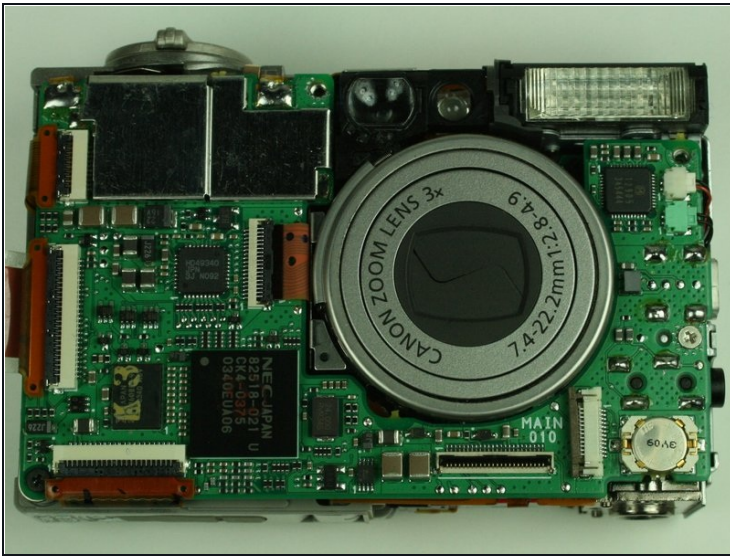
Step 14



⚠ Do not completely remove the main circuit board from the camera. A soldered ribbon cable still attaches the board to the camera. Complete removal would break the soldering points.

- In a hinge-like motion, gently lift the bottom of the main circuit board, which is the side without the soldering points.
- Gently detach the white ribbon cable from the underside of the main circuit board.

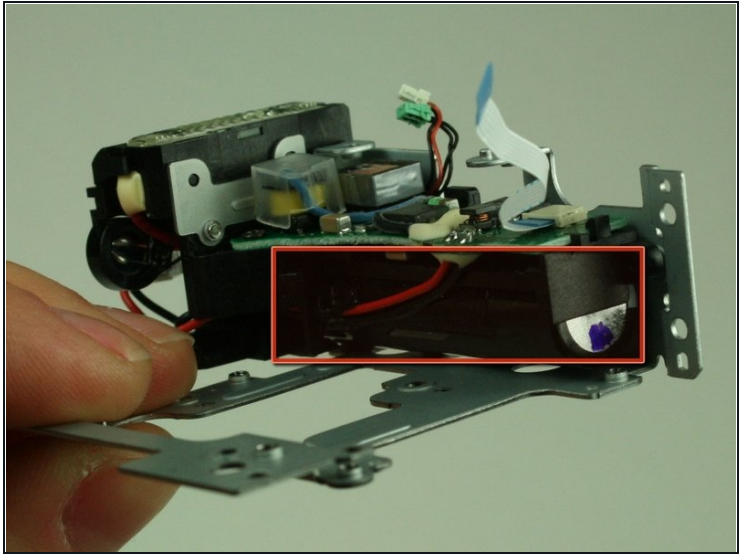
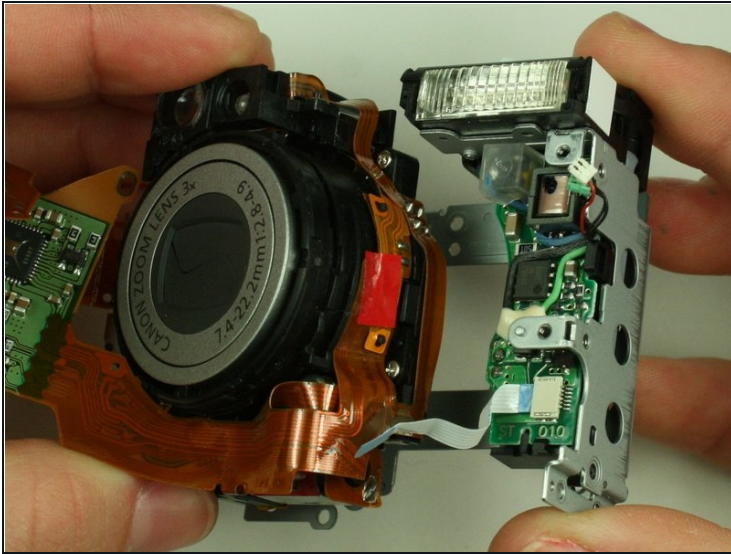
Step 15



⚠ Do not attempt this next step unless you have soldering experience and feel comfortable desoldering. Otherwise you may damage the camera.

- Gently desolder the two ribbon cables attached to the motherboard.
- Remove the motherboard.

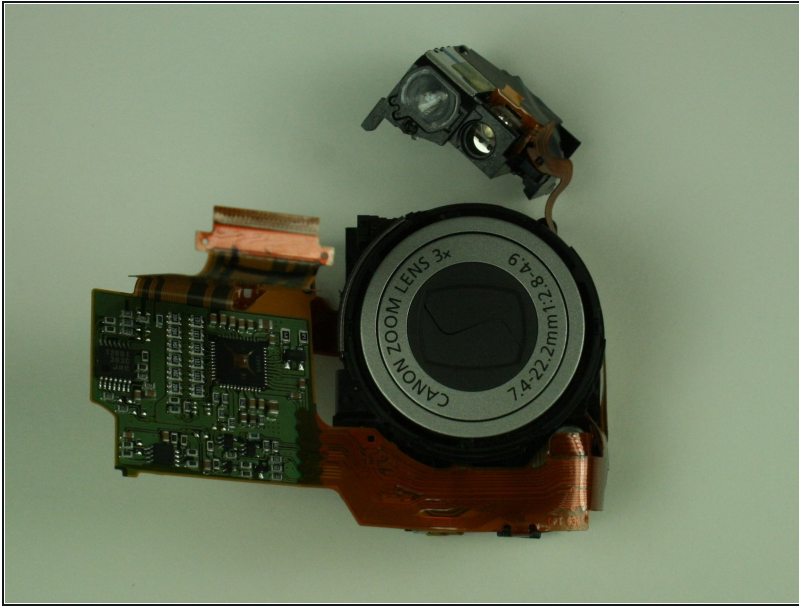
Step 16 — Canon PowerShot S400 Teardown



⚠ This step exposes the flash capacitor, a black cylindrical object, that is a part of the flash assembly. The capacitor can cause electrical shock.

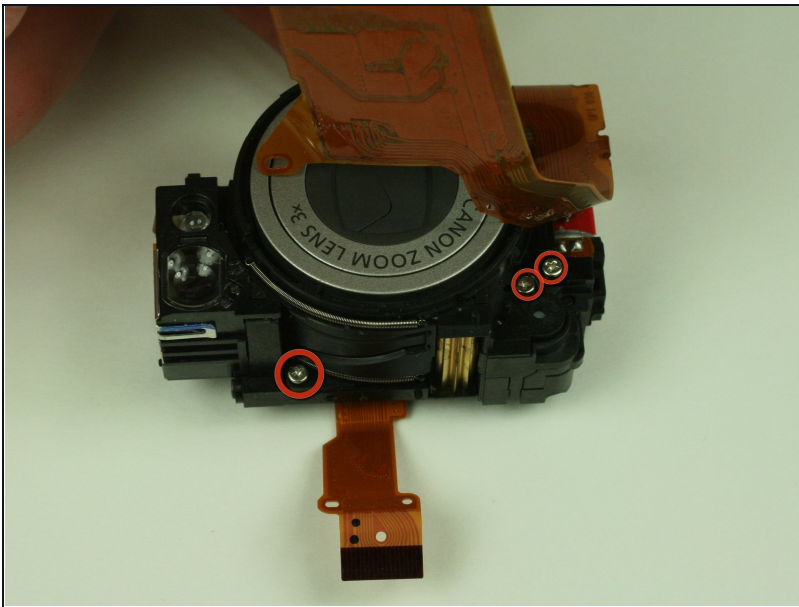
- Working with the lens-flash assembly, remove the three 3.45mm screws located on the metal plate.
- Separate the flash assembly from the lens assembly.
- Set aside the flash assembly.

Step 17



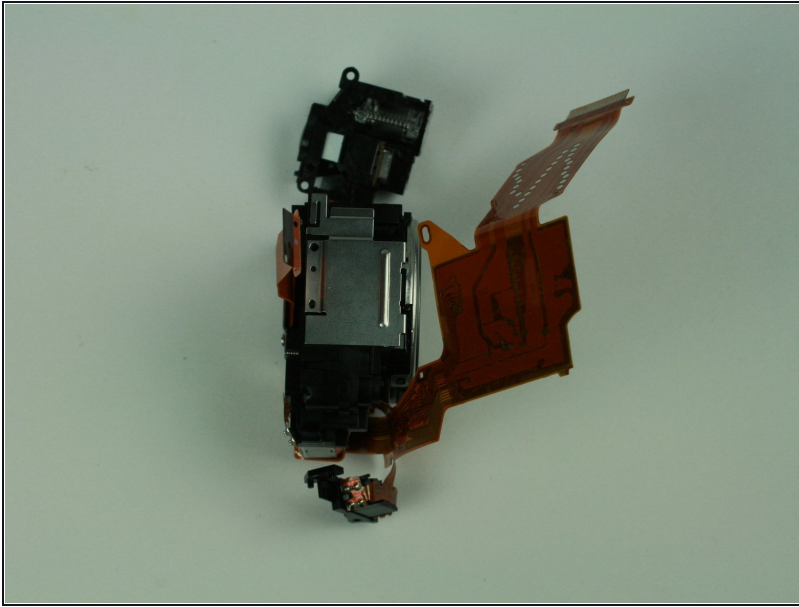
- ① A ribbon cable prevents complete separation of the viewfinder and the lens assembly.
- Remove the three 2.5mm screws connecting the viewfinder to the rest of the lens assembly.

Step 18



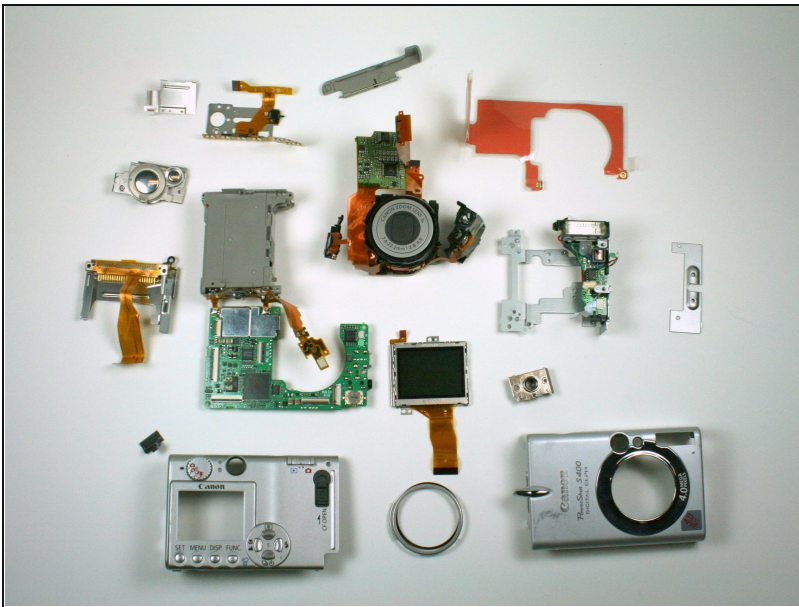
- Remove the three 2.5mm screws underneath the flex circuit.

Step 19



- Remove the small 1.5mm screw attaching the metal plate to the lens assembly.

Step 20



- Displayed here are all of the components of the camera.
- To reassemble the camera, follow all of the steps in reverse order.

To reassemble your device, follow these instructions in reverse order.