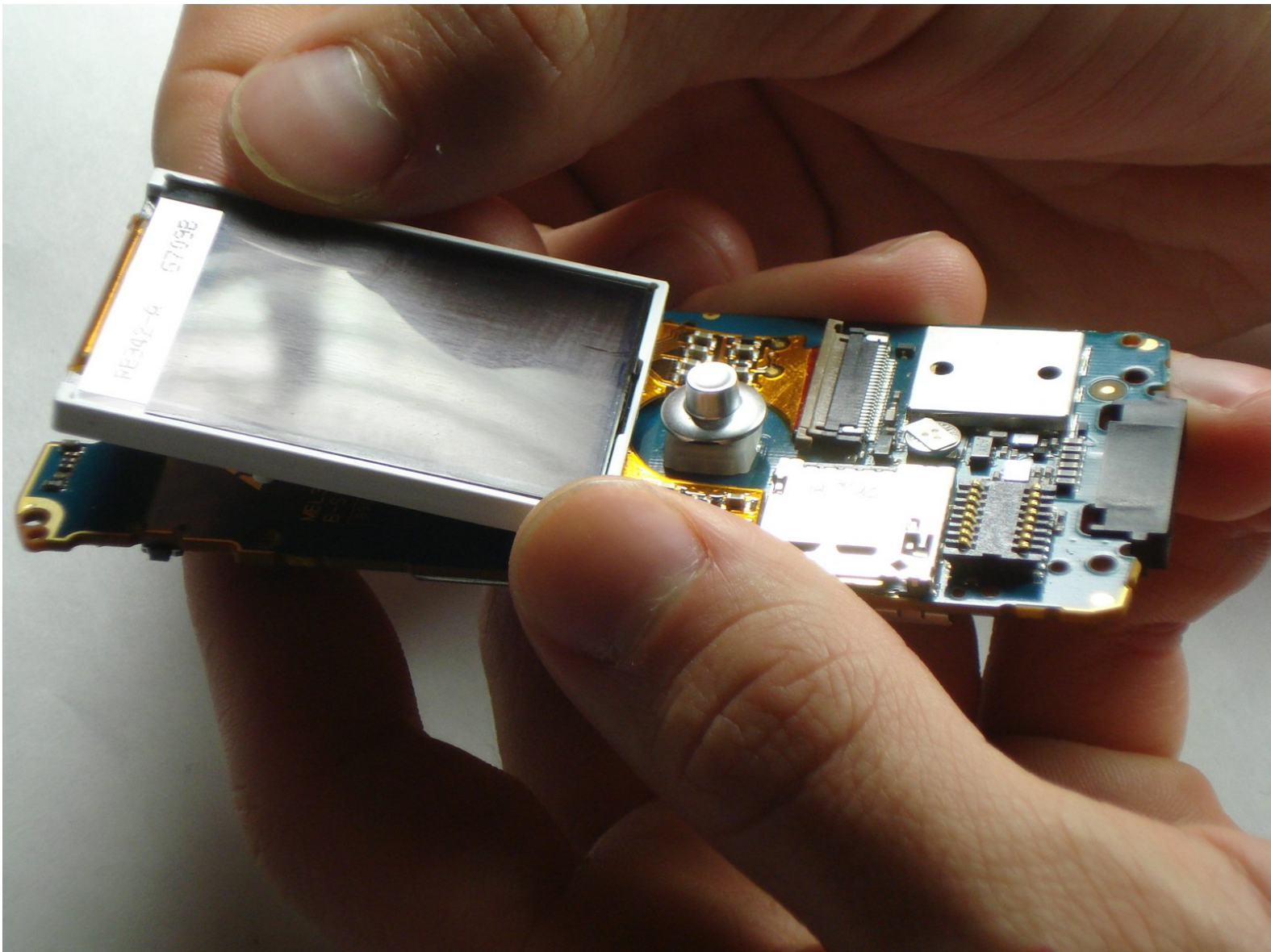




Sony Ericsson W200i LCD Screen Replacement

This guide goes in depth on how to swap out a faulty LCD screen for new one for the Sony Ericsson W200i cell phone.

Written By: Austin Cade



INTRODUCTION

Replacing a faulty LCD is relatively simple, just be patient and gentle while replacing the screen.



TOOLS:

- [iFixit Opening Tools](#) (1)
- [Flathead 3/32" or 2.5 mm Screwdriver](#) (1)
- [T6 Torx Screwdriver](#) (1)
- [Tweezers](#) (1)



PARTS:

- [Original Sony Ericsson LCD display compatible with Sony Ericsson K310i / K320i / W200i models](#) (1)

Step 1 — Disassembling Sony Ericsson W200i Battery



- Slide the battery cover up and off the phone.

Step 2



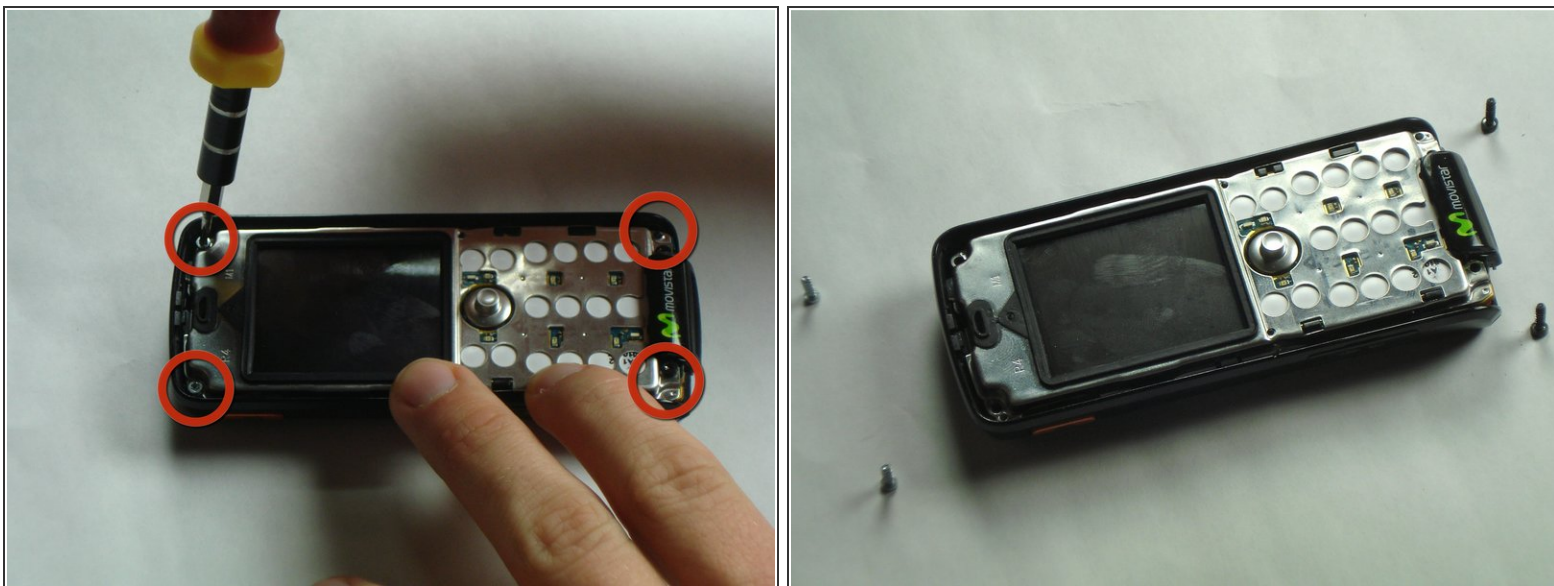
- Pop the battery out of its slot by lifting it up.

Step 3 — Front Case



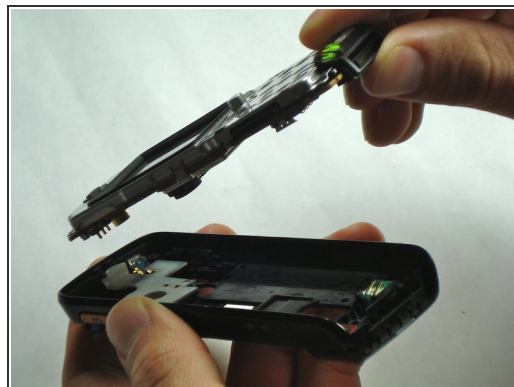
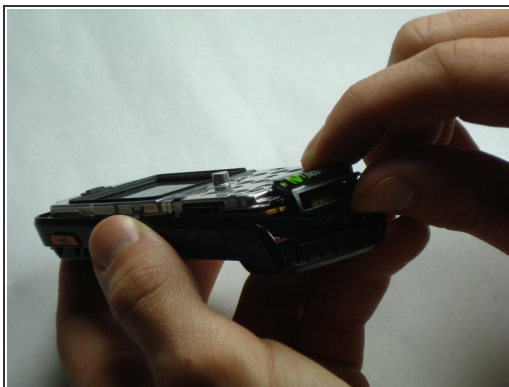
- Insert the plastic opening tool in between the front case and the back case.
 - Apply downward pressure to make the case lift upwards, thus popping the front case off.
- ⚠ Use caution when removing the front case. It may seem stuck but just ease it out.

Step 4 — Core



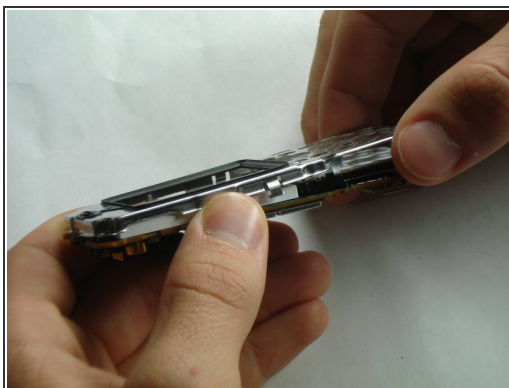
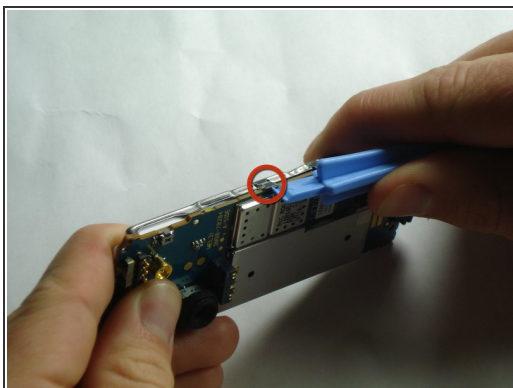
- Remove the 4 screws in the corners of the front of the phone using a T6 screwdriver.
- ⓘ Note that the top 2 screws are silver and the bottom 2 screws are black.

Step 5



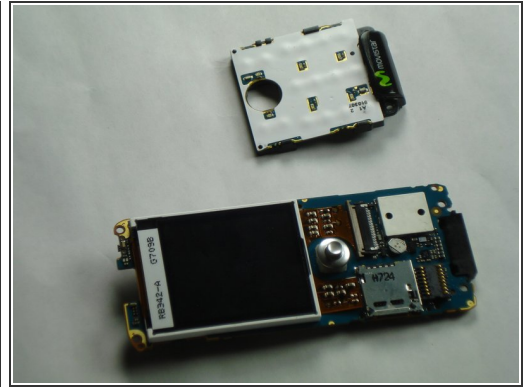
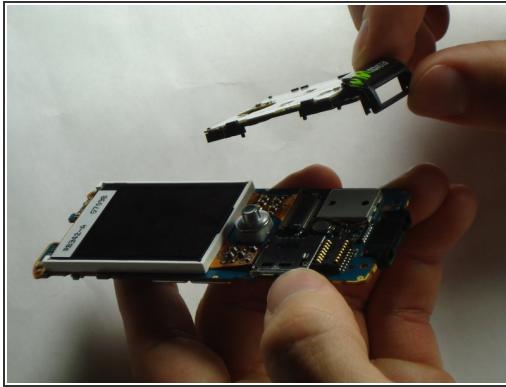
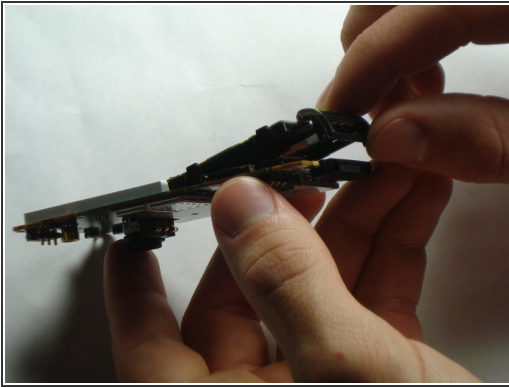
- There is a black tab in the top left corner holding the core in place.
- Remove the core by pulling straight up to prevent breaking the tab.

Step 6 — LCD Screen



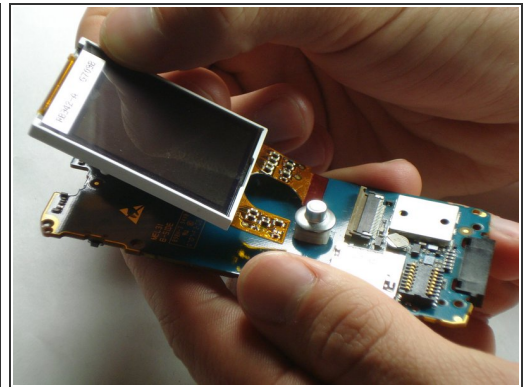
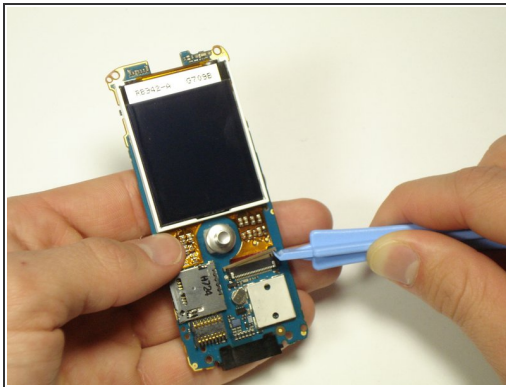
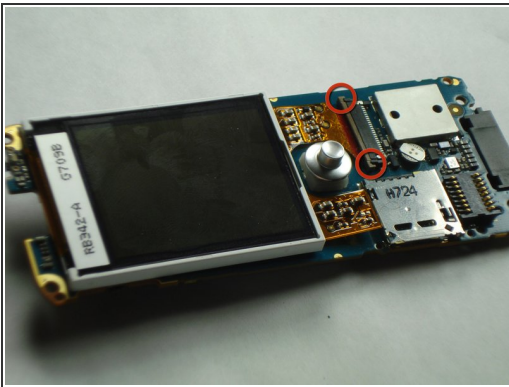
- Undo the metal clip on each side of the core using the plastic opening tool.
- ⚠ Do not bend clips past 2mm or they could break.

Step 7



- Gently pull the white keyboard and charging port away from the motherboard and off the phone.

Step 8



- Undo the grey clip that holds the LCD ribbon in place by loosening one side of the clip with the plastic opening tool, then gently separate the other side of the clip from the holder.
- ⓘ The copper end of the ribbon should slide out of the housing as you pull the LCD up and away from the motherboard.
- ⚠ Using too much force may bend the copper ribbon.

To reassemble your device, follow these instructions in reverse order.