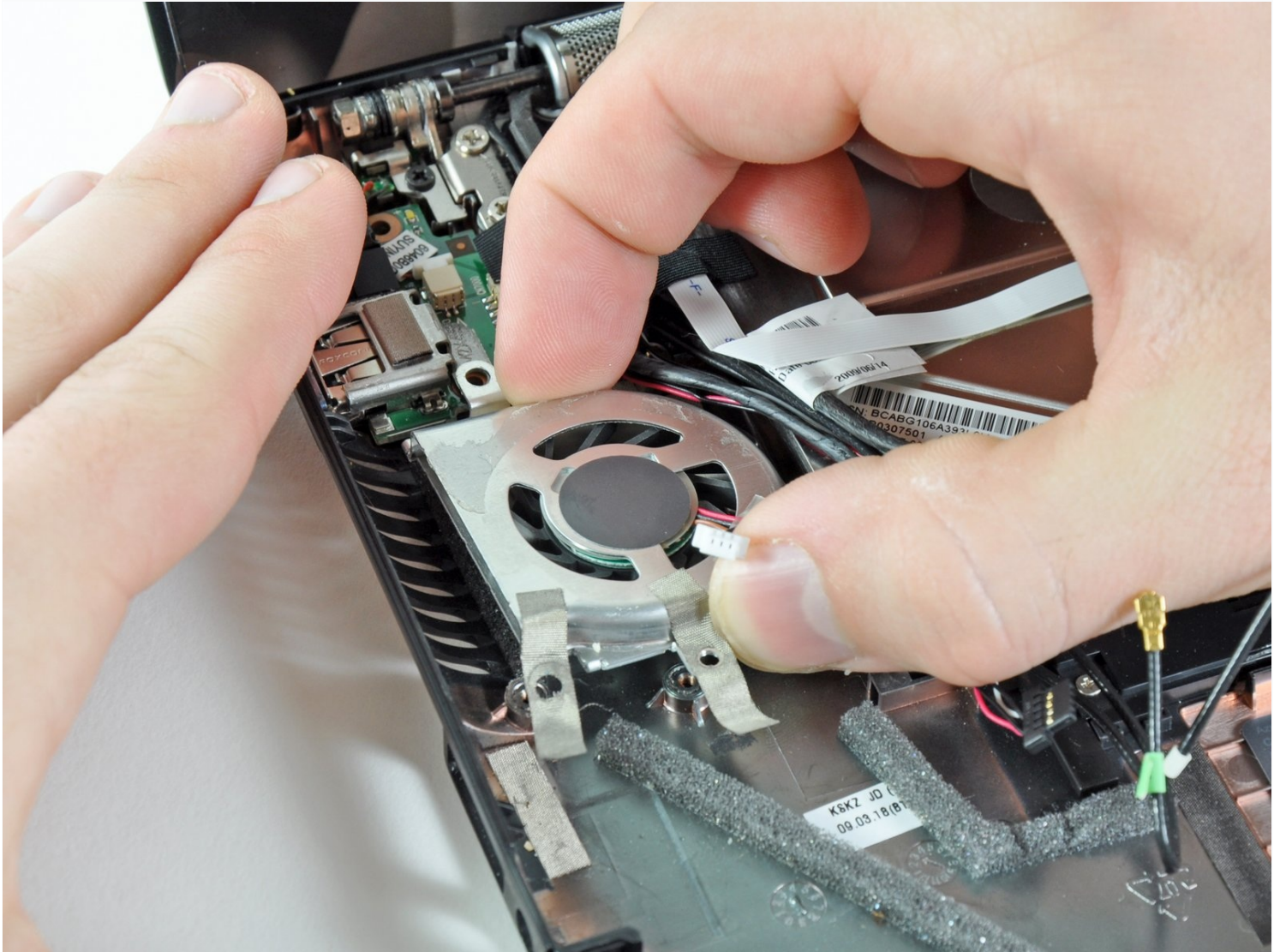




HP Mini 1000 Fan Replacement

Use this guide to replace a burned-out or noisy...

Written By: Walter Galan



INTRODUCTION

Use this guide to replace a burned-out or noisy fan.

TOOLS:

Phillips #00 Screwdriver (1)

Spudger (1)

Tweezers (1)

Step 1 — Battery



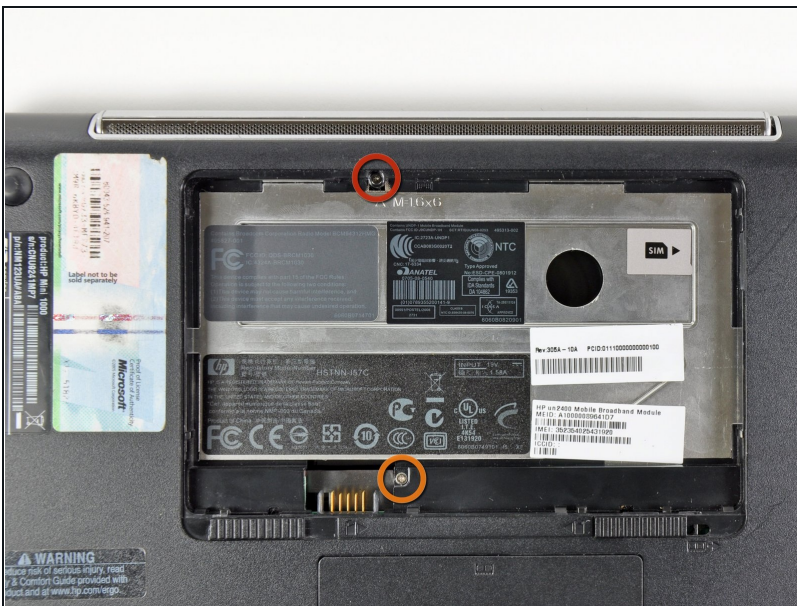
- With the case closed, place the Mini 1000 top-side down on a flat surface.
- Push both of the battery release latches toward each other.

Step 2



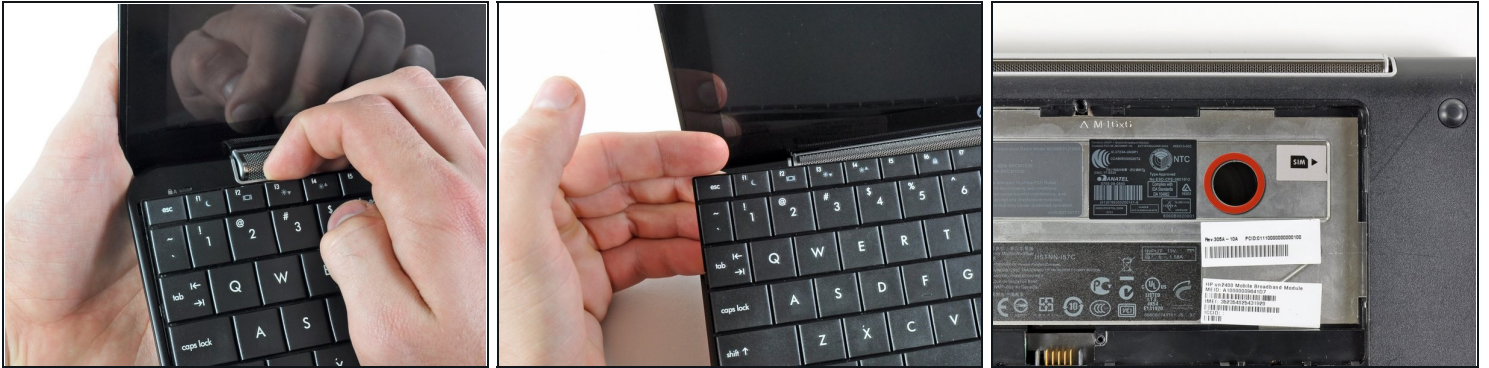
- Lift the battery out of the Mini 1000 from the edge closest to the release latches.

Step 3 — Keyboard



- Remove the following two screws:
 - One 6 mm Phillips screw
 - One 4 mm Phillips screw

Step 4



- ① To facilitate the removal of the keyboard, it is recommended to push the keyboard outwards with one hand through the opening (highlighted in the third picture) located on the backside of the Mini 1000.
- While pushing through the opening with one hand, grasp the left upper edge with the other hand and slightly pull the keyboard towards you.
- Once an opening has been established, grasp the keyboard and slowly lift it upwards along the upper perimeter of the top edge.

Step 5



- Lift the keyboard out of the upper case, minding the cable that is still connecting it to the motherboard.

Step 6

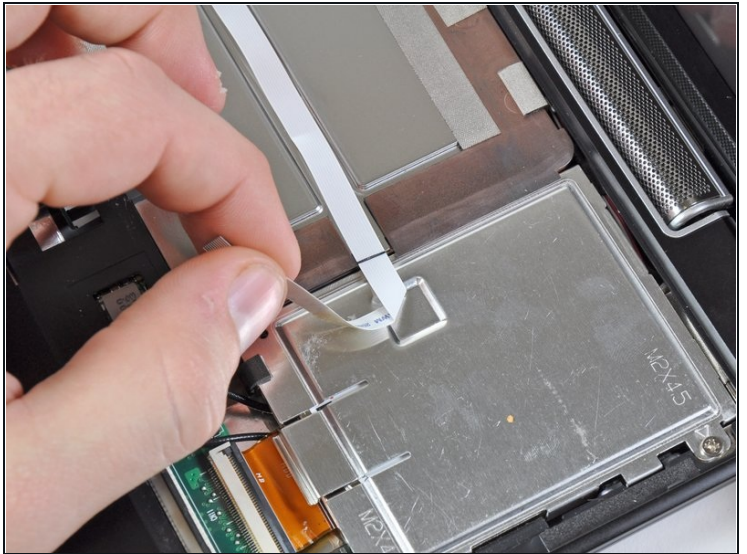
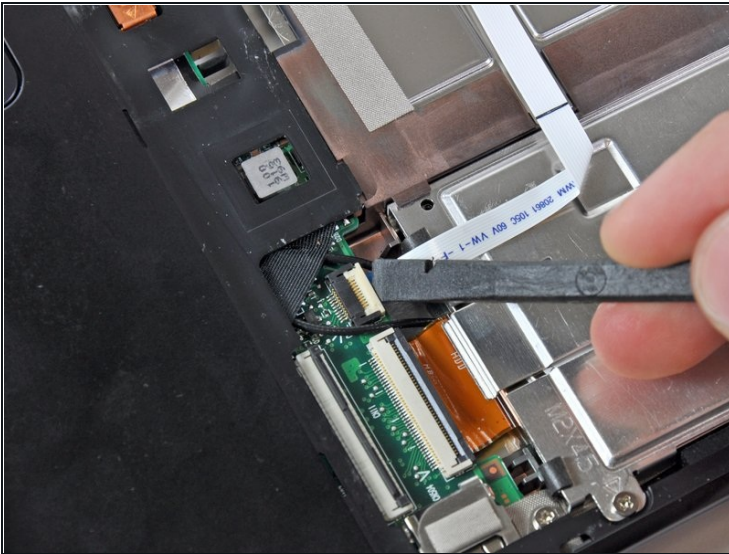


- Use your fingernail or the flat end of a spudger to flip up the retaining flap on the keyboard cable ZIF socket.

⚠ Be sure you are prying up on the retaining flap, **not** the socket itself.

- Pull the cable out of its socket and remove the keyboard.

Step 7 — Hard Drive

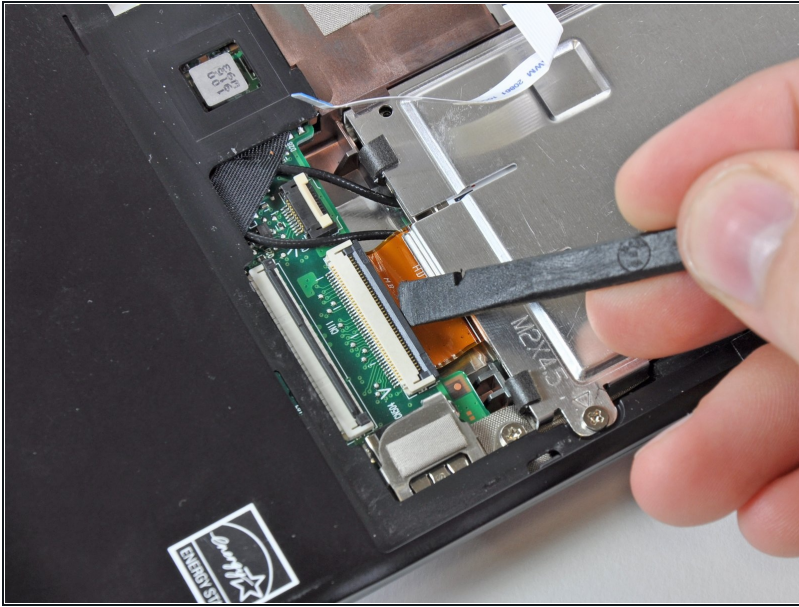


- Use your fingernail or the flat end of a spudger to flip up the retaining flap on the SIM card ribbon cable ZIF socket.

⚠ Be sure you are prying up on the retaining flap, **not** the socket itself.

- Pull the SIM card ribbon cable out of its socket and peel it off the top of the hard drive enclosure.

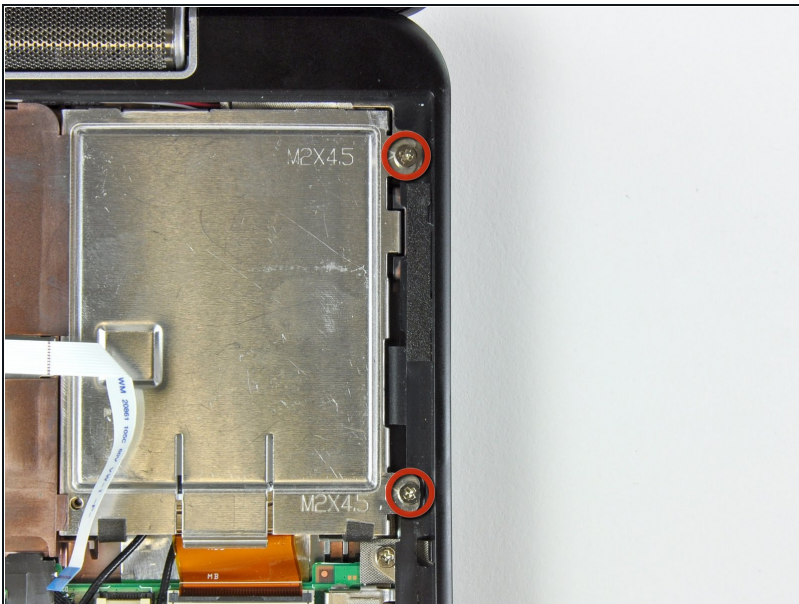
Step 8



- Use your fingernail or the flat end of a spudger to flip up the retaining flap on the hard drive cable ZIF socket.

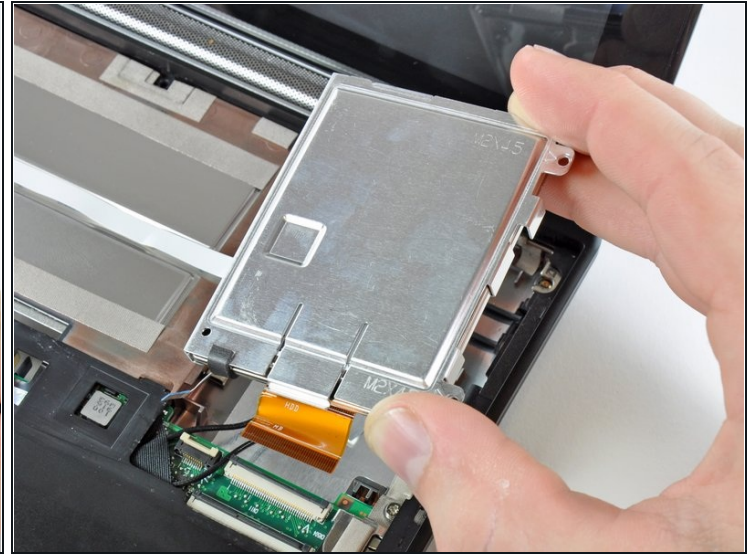
⚠ Be sure you are prying up on the retaining flap, **not** the socket itself.

Step 9



- Remove the two 4.5 mm Phillips screws securing the hard drive to the lower case.

Step 10



- Lift the hard drive up and out of the lower case, being careful not to damage its cable in the process.

Step 11 — Upper Case



- Using the sharp tip of a spudger, pry and remove the four plastic screw covers from the underside of the HP Mini 1000.
- ❗ There are three different variations of the covers:
 - The two bottom covers are short in height and are notched to prevent incorrect insertion
 - The upper right cover is taller in height and is notched.
 - The upper left cover is taller in height and is not notched.

Step 12



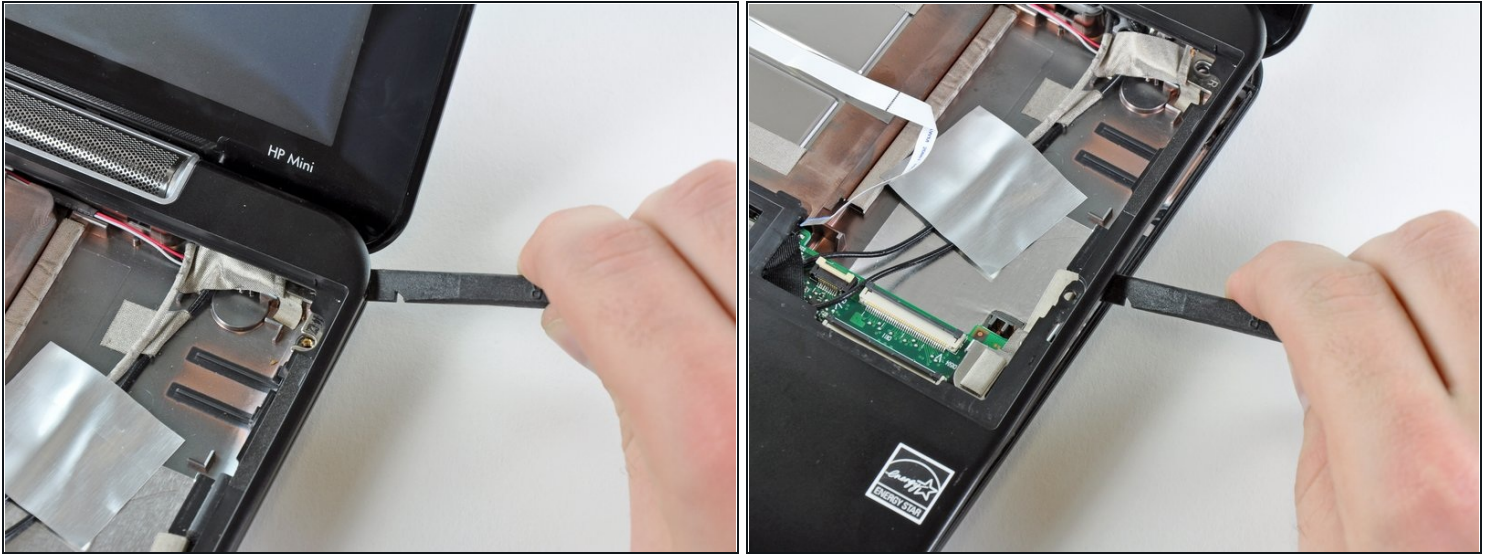
- Remove the four 7 mm Phillips screws that secure the upper case to the lower case.

Step 13



- Flip the computer over and open the display.
- Remove the two 4.5 mm Phillips screws securing the upper case to the lower case.

Step 14



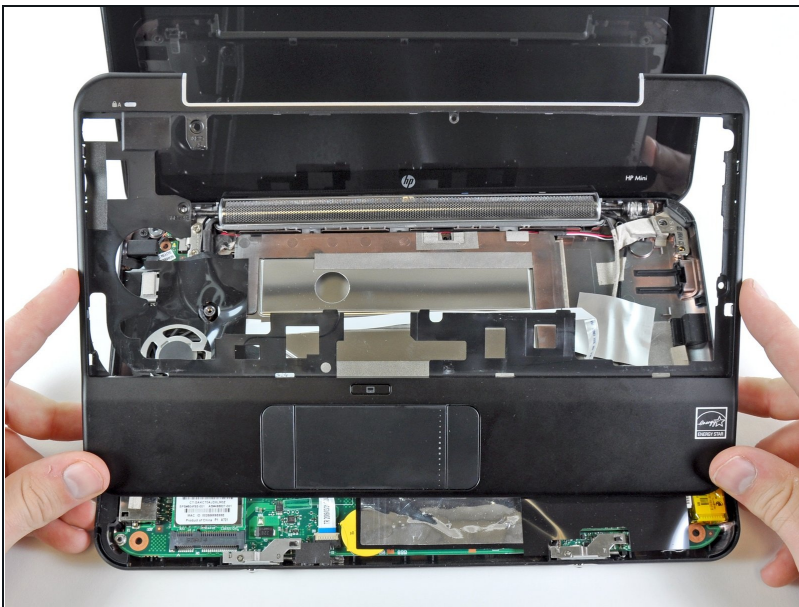
- Wedge the flat end of a spudger in between the upper case and lower case near the bottom right corner of the display.
- Carefully pry and rock the spudger upwards to create a small gap between the upper case and lower case.
- Continue the previously described motion along the right edge of the upper case to release the clips securing the upper case to the lower case.

Step 15



- Repeat the same procedure as mentioned in the previous step to release the clips along the left side of the upper case.

Step 16



- Grasp the upper case and carefully lift it slightly upwards, freeing it from any remaining clips.

⚠ The upper case is still attached via the TouchPad ribbon cable that is connected to the motherboard. **Do not remove it completely just yet.**

Step 17



- ❗ Lay the upper case on top of the upper portion of the motherboard.
- Use your fingernail or the flat end of a spudger to flip up the retaining flap on the TouchPad cable ZIF socket.
- ⚠ Be sure you are prying up on the retaining flap, **not** the socket itself.
- Pull the TouchPad ribbon cable out of its socket.
- Remove the upper case from the HP Mini 1000.

Step 18 — SD Card



- Push the SD card toward the inside of the computer to unlock it from the lower case.
- Pull the SD card out of the lower case.

Step 19 — Wi-Fi Board



- ❗ If present, peel the sticker up off the top of the Wi-Fi board to reveal the Wi-Fi antenna connectors.

Step 20



- Pry the Wi-Fi antenna connectors (2 total) up off the Wi-Fi board.
- ☑ During reassembly, remember to correctly connect the antenna cables to their respective terminals. The green labeled antenna is connected to the **"MAIN"** terminal and the white labeled antenna is connected to the **"AUX"** terminal.

Step 21



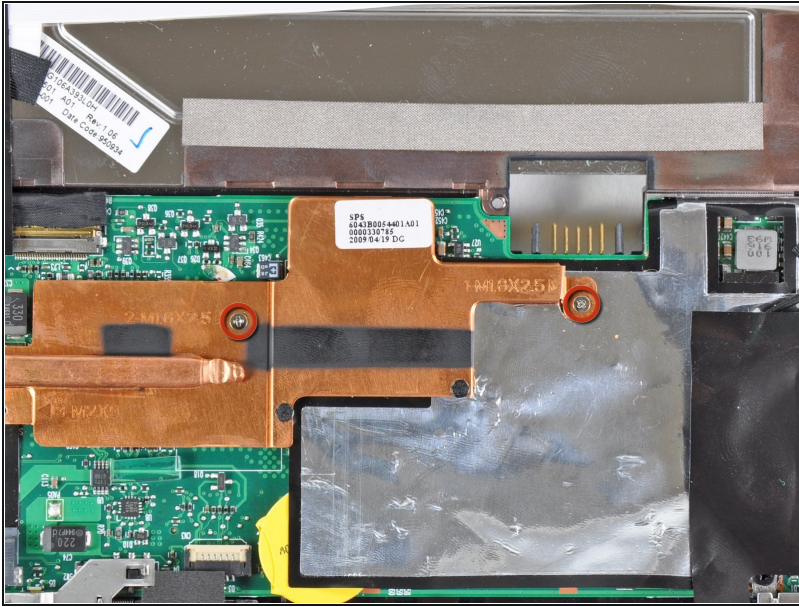
- Remove the single 3 mm Phillips screw securing Wi-Fi board to the motherboard.

Step 22



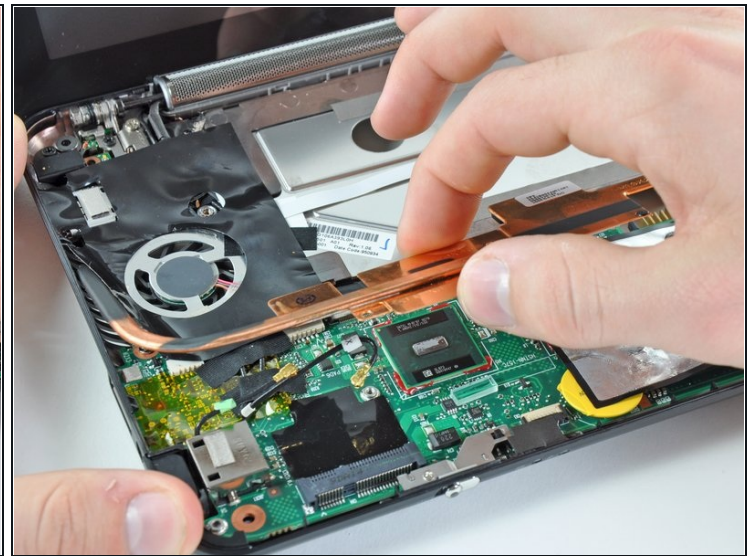
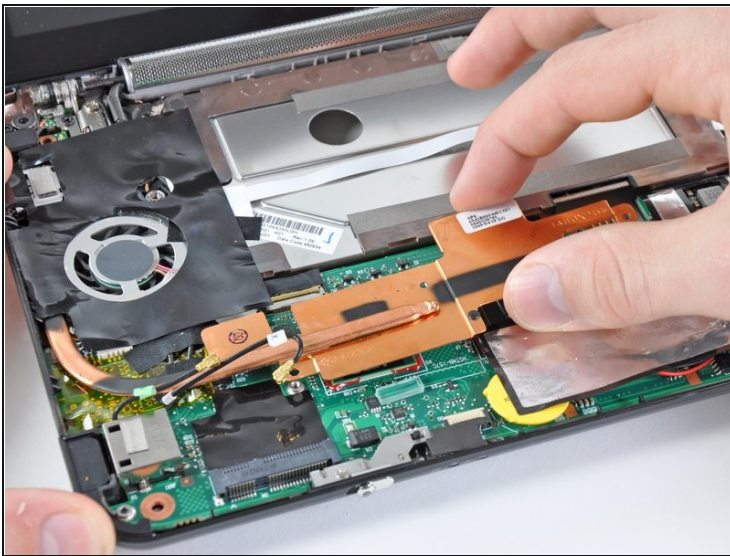
- ① Upon removing the Phillips screw that secures the Wi-Fi board to the motherboard, the Wi-Fi board should pop up from its top side nearest the antenna sockets.
- Grasp the Wi-Fi board and lift it straight away from its socket on the motherboard.

Step 23 — Heat Sink



- Remove the two 2.5 mm Phillips screws securing the heat sink to the motherboard.

Step 24



- Carefully lift the heat sink off the face of the motherboard and de-route the curved section from next to the fan.
- Before reinstalling the heat sink, be sure to apply a new layer of thermal paste to the CPU. We have a [thermal paste guide](#) that makes it easy.

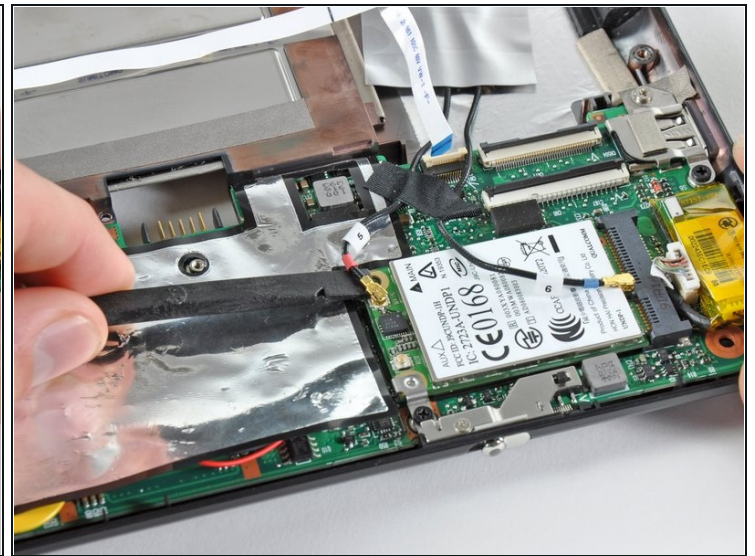
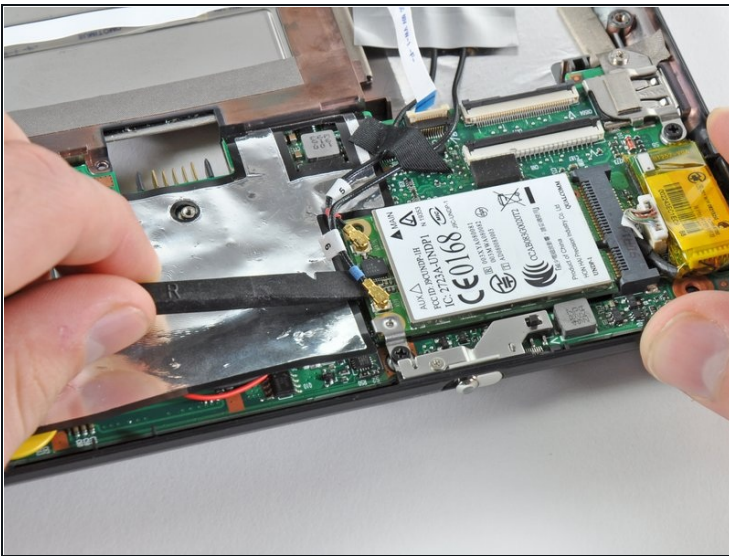
⚠ Only apply a new layer of thermal paste to the face of the CPU. The CPU is the large processor located closest to the fan.

Step 25 — WWAN Board



- ① If present, carefully peel the piece of tape covering the WWAN board.

Step 26



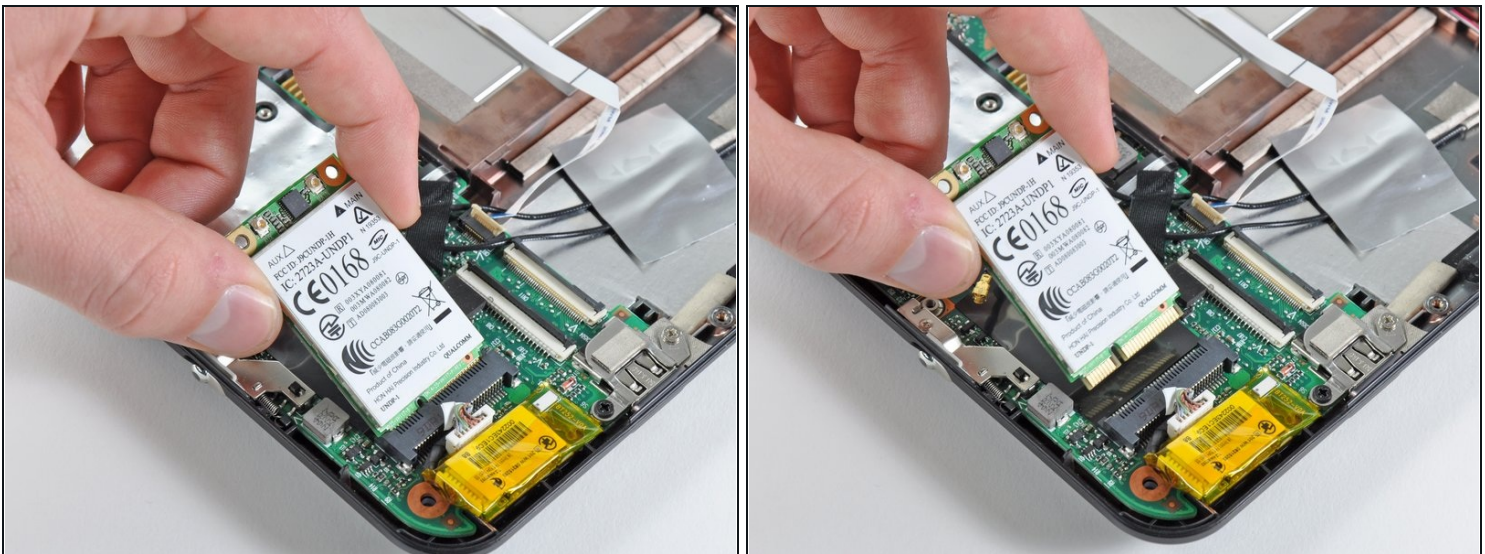
- Pry the WWAN antenna connectors (2 total) up off the WWAN board.
- ☑ During reassembly, remember to correctly connect the antenna cables to their respective terminals. The red labeled antenna is connected to the **"MAIN"** terminal and the blue labeled antenna is connected to the **"AUX"** terminal.

Step 27



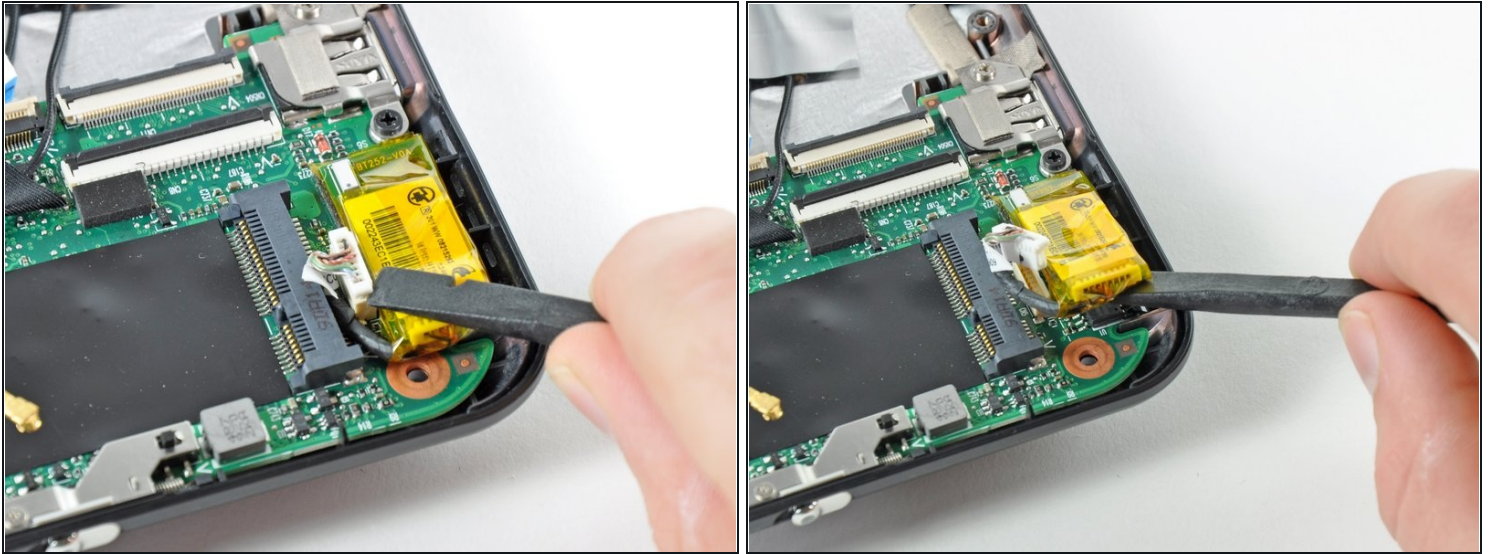
- Remove the single 3 mm Phillips screw securing the WWAN metal bracket and WWAN board to the motherboard.
- ☑ During reassembly, before securing the WWAN board to the upper case, be sure the metal bracket is correctly placed (as highlighted in the second picture).
- ⚠ Be cautious of the metal bracket's displacement. It can easily become lost during disassembly.

Step 28



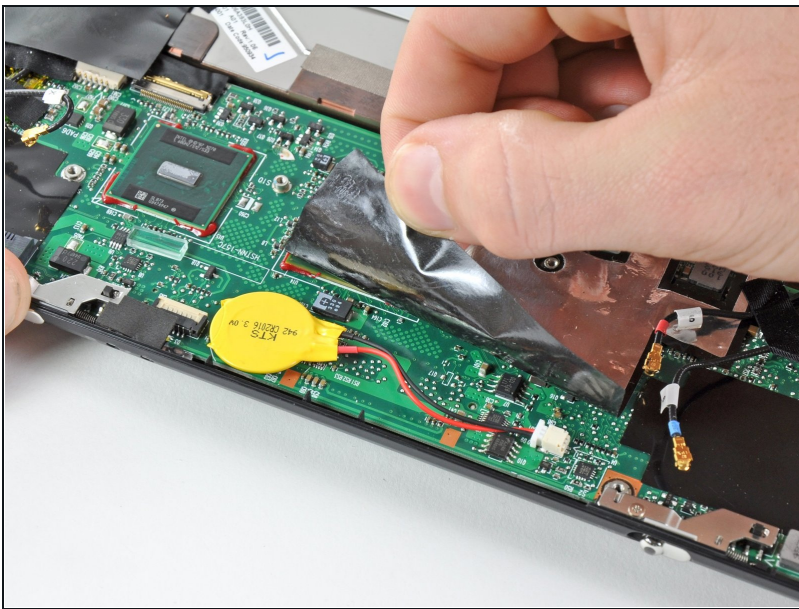
- ① Upon removing the Phillips screw that secures the WWAN board to the motherboard, the WWAN board should pop up from its left side.
- Grasp the WWAN board and pull it straight out of its socket on the motherboard.

Step 29 — Bluetooth Board



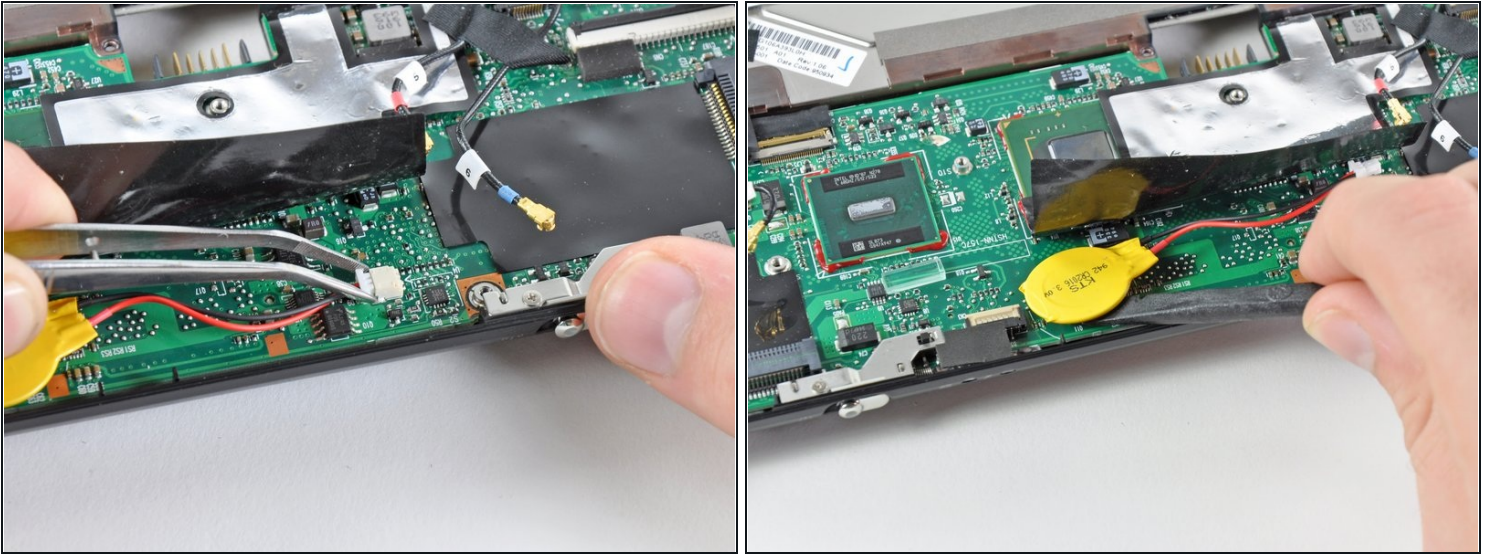
- Use the flat end of a spudger to lift the Bluetooth cable connector out of its socket on the motherboard.
- Carefully pry the Bluetooth board off the motherboard and remove it from the Mini 1000.

Step 30 — PRAM Battery



- ① If present, carefully peel back the piece of black film attached to the heat sink to reveal the PRAM battery and its cable.

Step 31



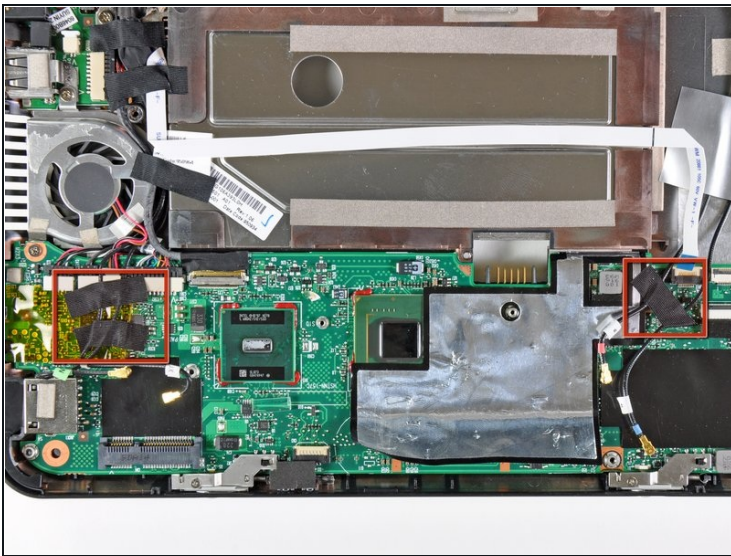
- Use a pair of [tweezers](#) to pull the PRAM battery connector out of its socket on the motherboard.
- ① Pull the connector parallel to the face of the motherboard toward the fan side of the computer.
- Use the flat end of a spudger to pry the PRAM battery off the adhesive securing it to the motherboard.
- Remove the PRAM battery.

Step 32 — Motherboard



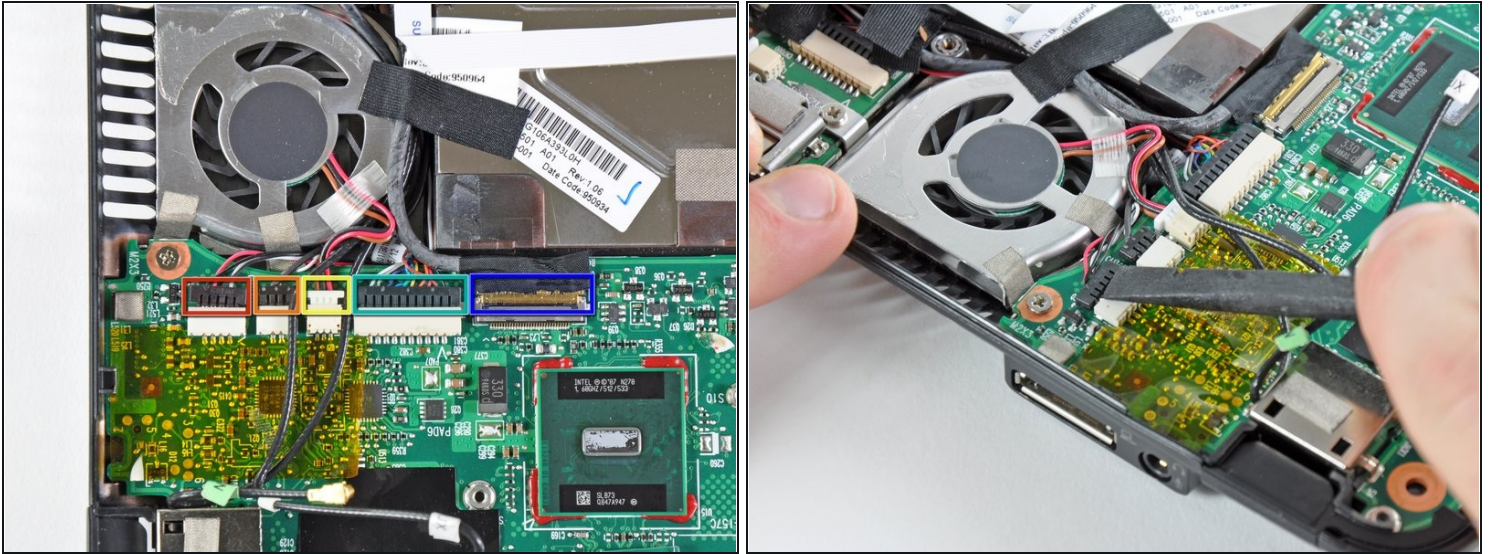
- ⓘ If present, remove the large piece of black adhesive film covering the area around the fan.

Step 33



- ⓘ If present, remove the pieces of black cloth tape securing the antenna cables to the motherboard.

Step 34

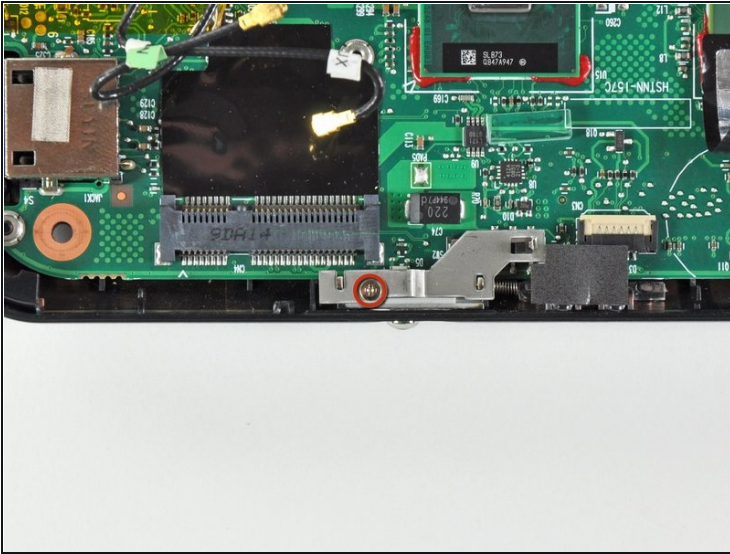


- Use the flat end of a spudger or your fingers to disconnect the following cables:

- Speaker cable
- Microphone cable
- Fan cable
- Power cable
- Display data cable

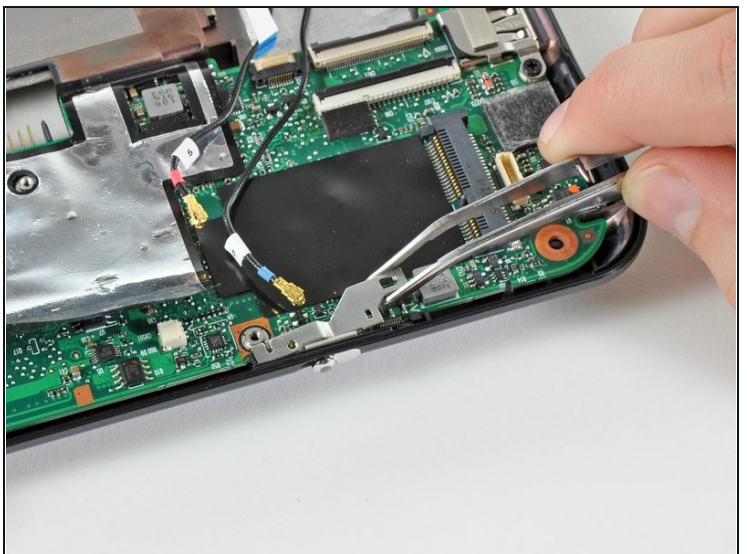
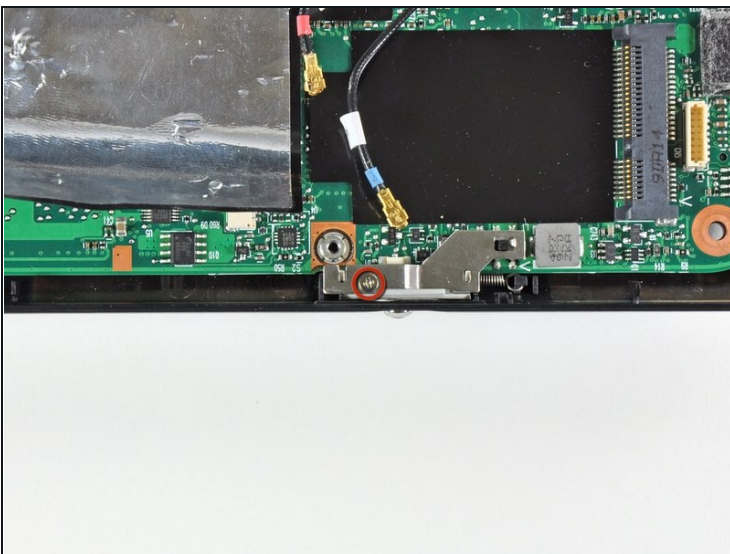
⚠ Do not lift the connectors up as you disconnect them from the motherboard. Push the connectors out of their sockets parallel to the face of the logic board toward the display assembly. Use extra care when disconnecting the display data cable, as its connector and socket are fragile.

Step 35



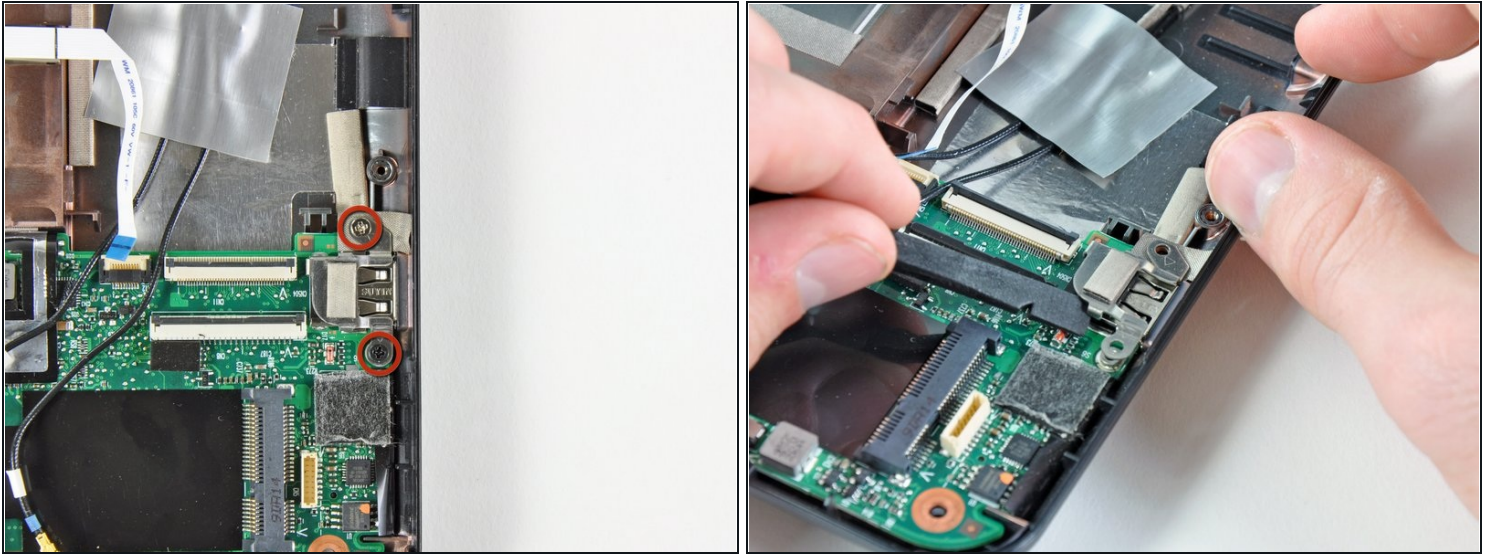
- Remove the 2.5 mm Phillips screw securing the power switch lever to the lower case.
- Use a pair of [tweezers](#) or your fingers to lift the power switch lever out of the Mini 1000.

Step 36



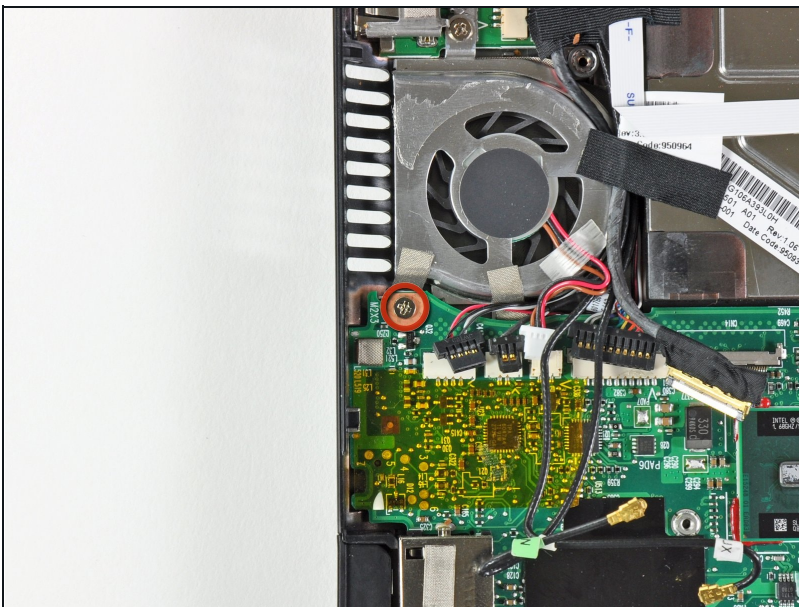
- Remove the 2.5 mm Phillips screw securing the wireless on/off switch lever to the lower case.
- Use tweezers or your fingers to remove the wireless on/off switch lever from the Mini 1000.

Step 37



- Remove the two 3 mm Phillips screws securing the USB bracket to the lower case.
- Pry up the USB bracket and remove it from the motherboard.

Step 38



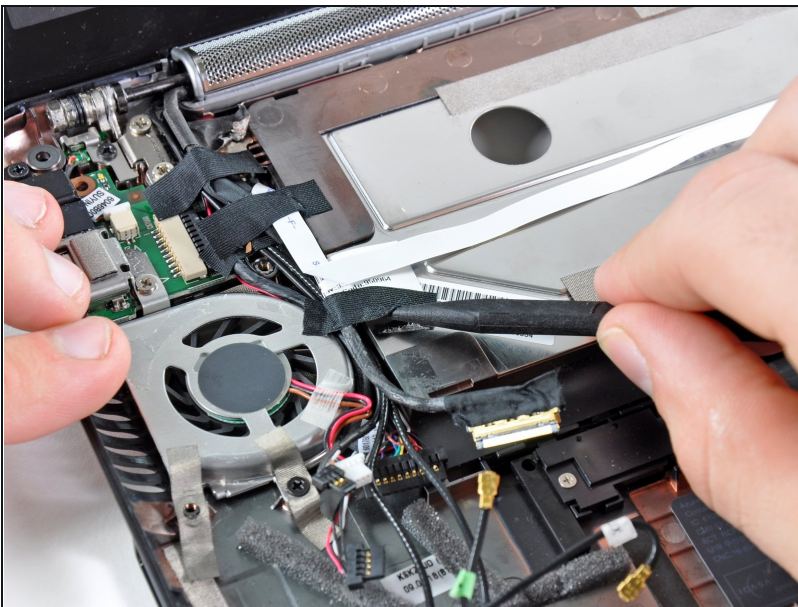
- Remove the single 4.5 mm Phillips screw securing the motherboard to the lower case near the fan.

Step 39



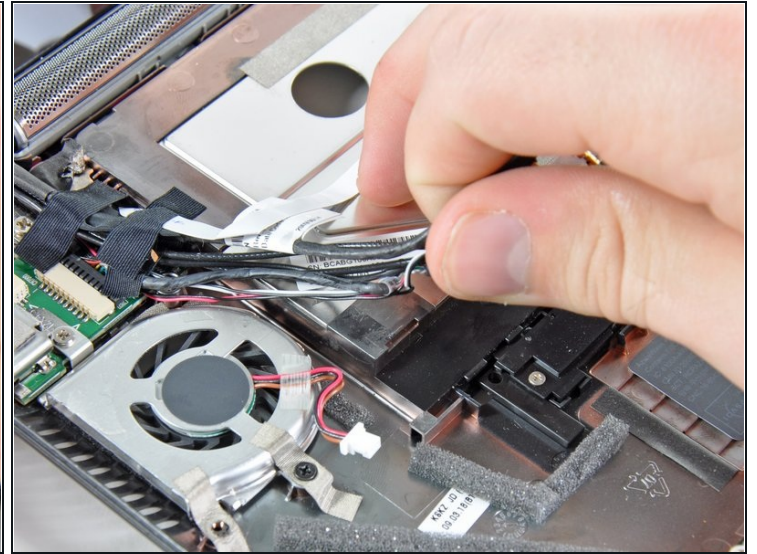
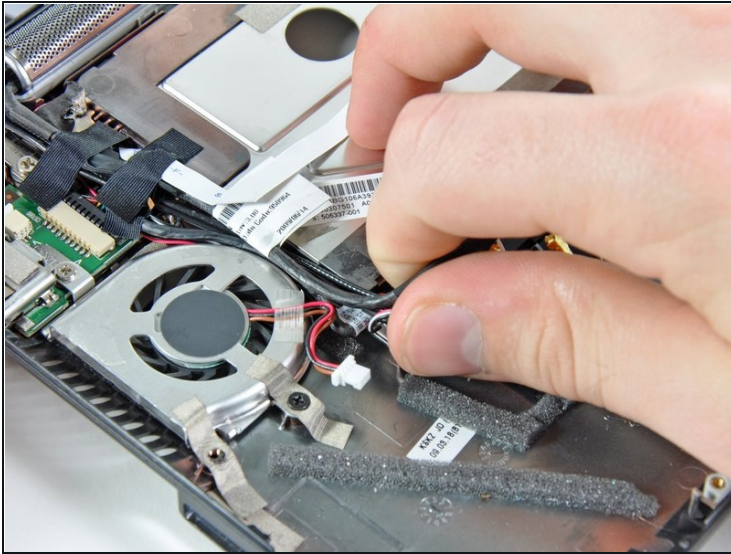
- Carefully lift the motherboard from its right edge and remove it from the lower case, minding any cables that may get caught.

Step 40 — Fan



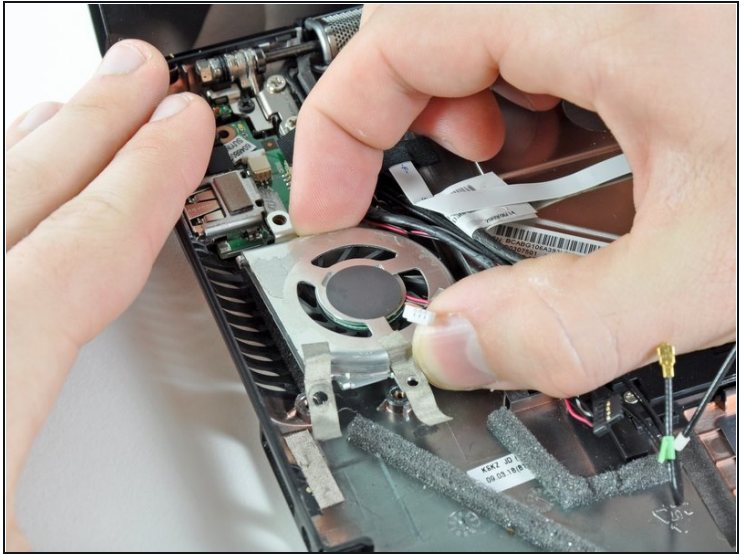
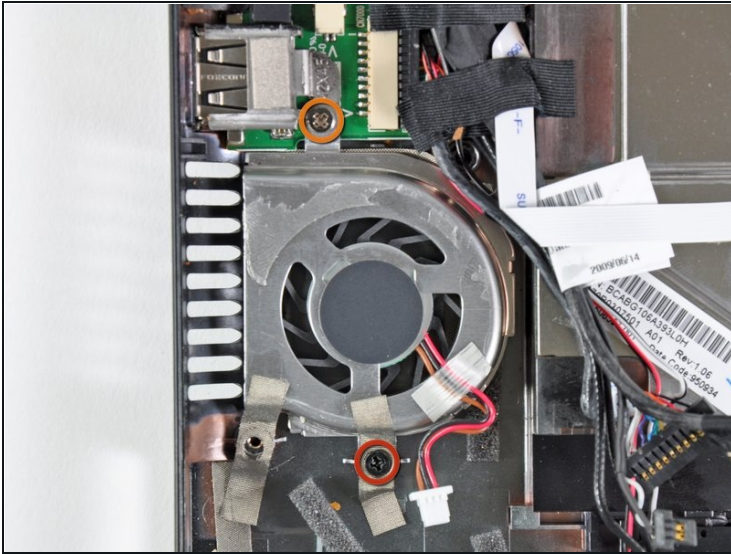
- ① If present, remove the piece of black cloth tape holding the bundle of cables to the top of the fan.

Step 41



- Carefully untangle the fan cable from the bundle of cables leading to the display.

Step 42



- Remove the following two screws:
 - One 3 mm Phillips screw
 - One 4.5 mm Phillips screw
- Remove the fan from the lower case.
- ☒ If you are replacing the fan, transfer the pieces of EMI tape to your new fan before installation.

To reassemble your device, follow these instructions in reverse order.