



PSP 300xc LCD Replacement

Replacing the LCD for a PSP 300xc

Written By: Matthew Newsom



INTRODUCTION

Did you drop your PSP? If your LCD is broken for any reason, you're in luck! This guide will show you how to replace that LCD with a brand new one.



TOOLS:

- [Phillips #00 Screwdriver](#) (1)
- [Spudger](#) (1)



PARTS:

- [Sony PSP 3000 LCD](#) (1)
- [Sony PSP 300xc LCD Bracket](#) (1)

- Press the button securing the battery door to the PSP 300xc, and lift the battery door off.
- Lift the battery out of the PSP.

- Use a spudger or your fingernail to remove the warranty sticker stuck to the inside of the battery tray

Step 3



- Remove four Phillips screws from the back of the PSP.

Step 4



- Remove two Phillips screws from the top of the PSP.

Step 5



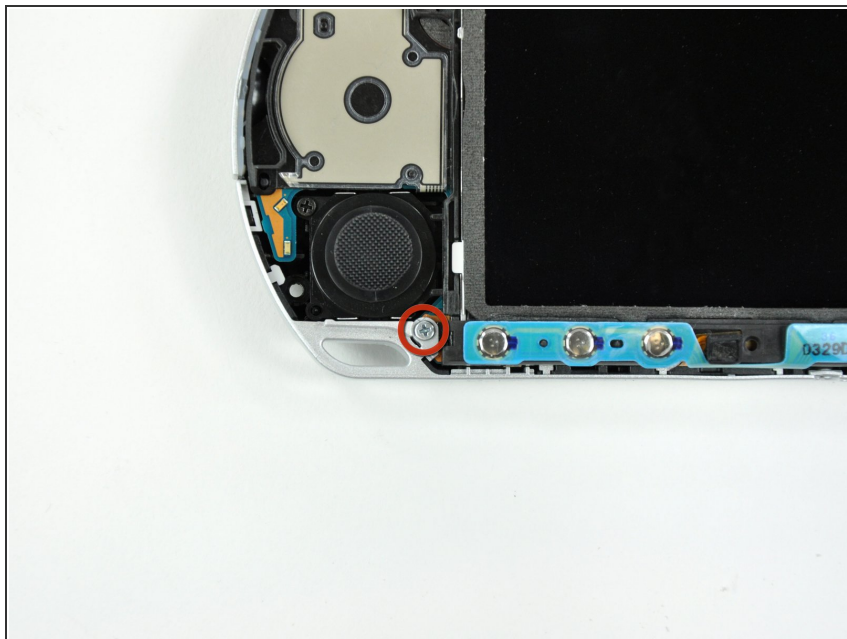
- Remove a single screw from the bottom edge of the PSP.

Step 6



- Insert a spudger between the front case and PSP, and slide the spudger along the perimeter of the front case to remove it.

Step 7 — LCD



- Remove a single Phillips screw securing the home bar to the PSP 300xc.

Step 8



- Push the home bar to the right about 1cm to release a tab, and begin to lift the right end of the home bar slightly.

⚠ Do not attempt to remove the home bar yet, it is still attached to the PSP 300xc.

Step 9



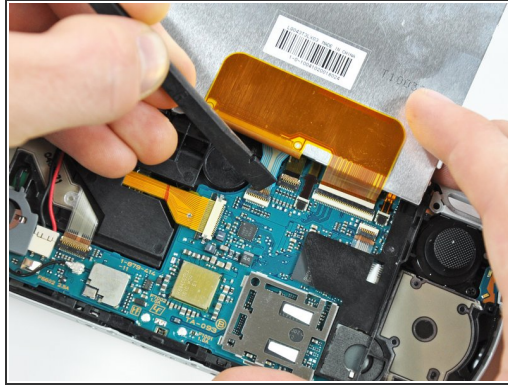
- Insert a spudger under the LCD, beside the black plastic tab.
- Push the LCD to the left and pry up to release the left edge of the LCD from under the plastic tab.

Step 10



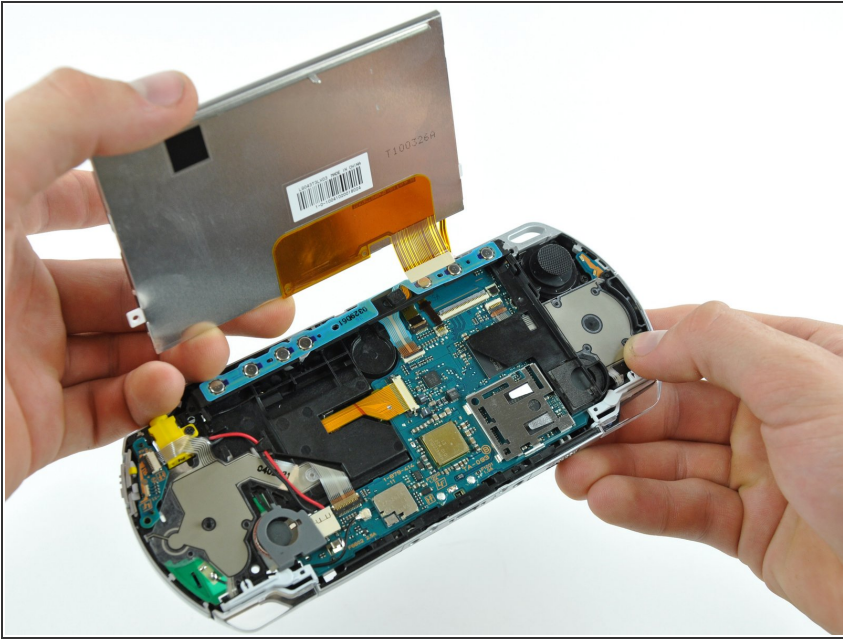
- Insert a spudger under the LCD, beside the black plastic tab.
- Push the LCD to the right and pry up to release the right edge of the LCD from under the plastic tab.

Step 11



- Rotate the LCD away from the PSP to reveal the LCD and home bar ribbon cables.
 - Use your fingernail or the edge of a plastic opening tool to flip up the retaining flap on the following four ZIF connectors:
 - Home bar cable
 - Microphone cable
 - LCD display data cable
 - Touchscreen cable
- ⚠ Be sure you are prying up on the retaining flap, not the socket itself
- After flipping up the locking tabs on all four connectors, use your fingers or a spudger to gently pull the cables straight out of the connectors.

Step 12



- Remove the LCD from the PSP 300xc.

To reassemble your device, follow these instructions in reverse order.