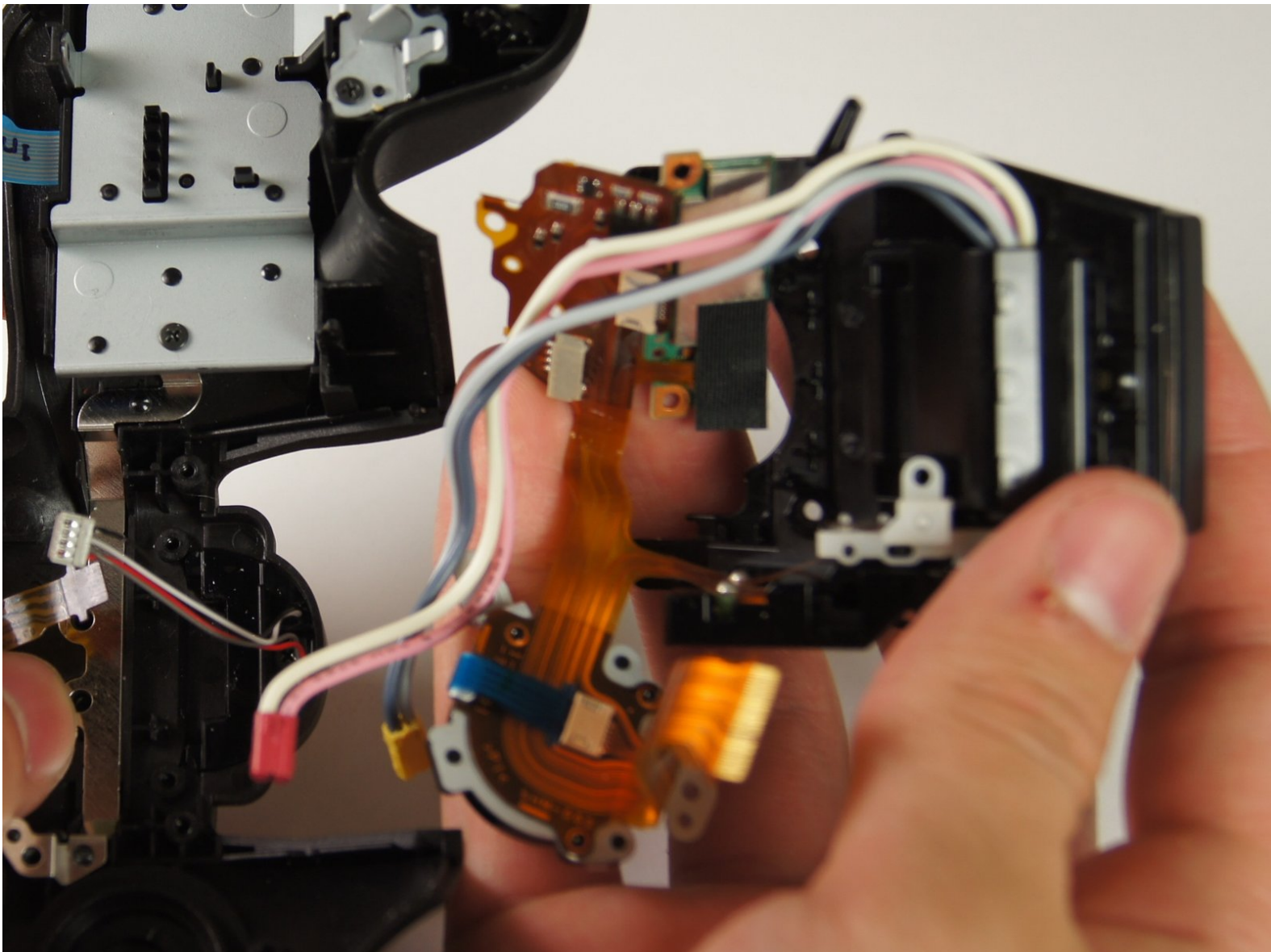




Sony SLT Alpha-65V Flash Unit Replacement

This guide will show you how to replace the flash unit housing from the top of the camera.

Written By: Samuel Lee



INTRODUCTION

When replacing the flash unit from the camera, be sure to work on a flat surface. Since there are many wires and parts that come off, be sure to keep track of all the components within the flash unit. This requires using a Phillips #00 screwdriver and tweezers.



TOOLS:

- [Phillips #00 Screwdriver](#) (1)
- [iFixit Opening Tools](#) (1)
- [Tweezers](#) (1)
- [Phillips #000 Screwdriver](#) (1)



PARTS:

- [Sony A65V Flash](#) (1)

Step 1 — Back Panel



- Unscrew the four 4.0 mm Phillips #00 screws with a on the base of the camera below the the scheme that separates the front and back panels.
- Unscrew the 5.0 mm Phillips #00 screw on the bottom right of the camera.

Step 2



- Unscrew the 4.0 mm Phillips #00 screw on bottom of the left side of the camera.
- Unscrew the 5.0 mm Phillips #00 screw near the top of the left side of the camera.

Step 3

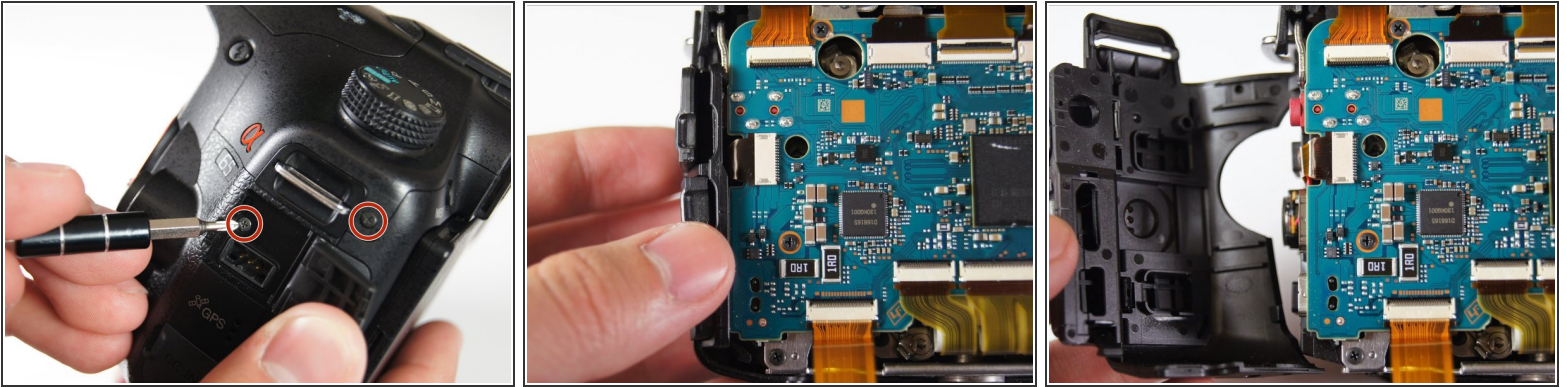


⚠ Be careful when pulling the back panel away as it will still be connected to the body of the camera by two strips of film.

i When unscrewing the 5.0 mm screw on the dial, make sure to hold onto the dial that becomes detached after taking out the screw.

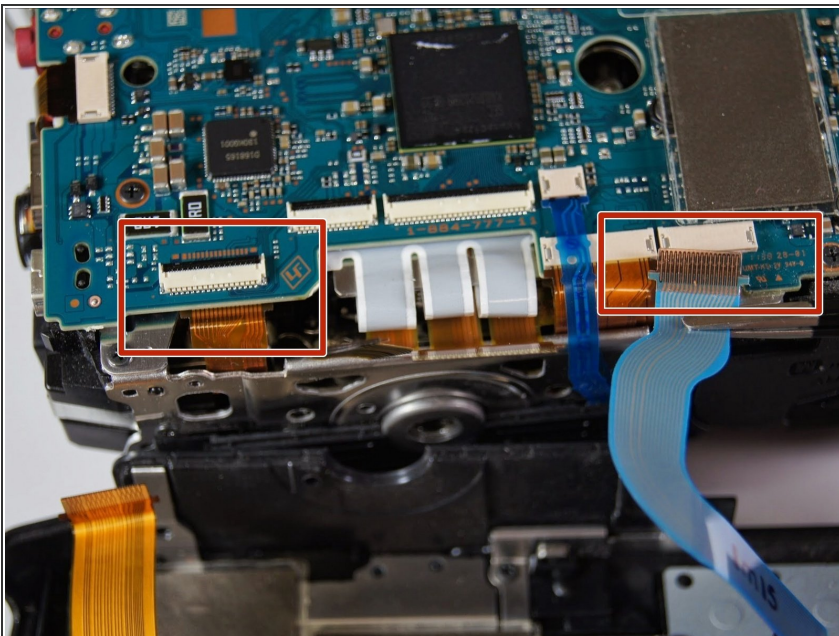
- Unscrew the two 4.0 mm Phillips #00 screw at the top of the camera by the eyepiece.
- Unscrew the 5.0 mm Phillips #00 screw of the dial below the other two screws.
- Once all the screws are removed, carefully use your hands to detach the back panel from the camera. Working around the edges can help as well.

Step 4



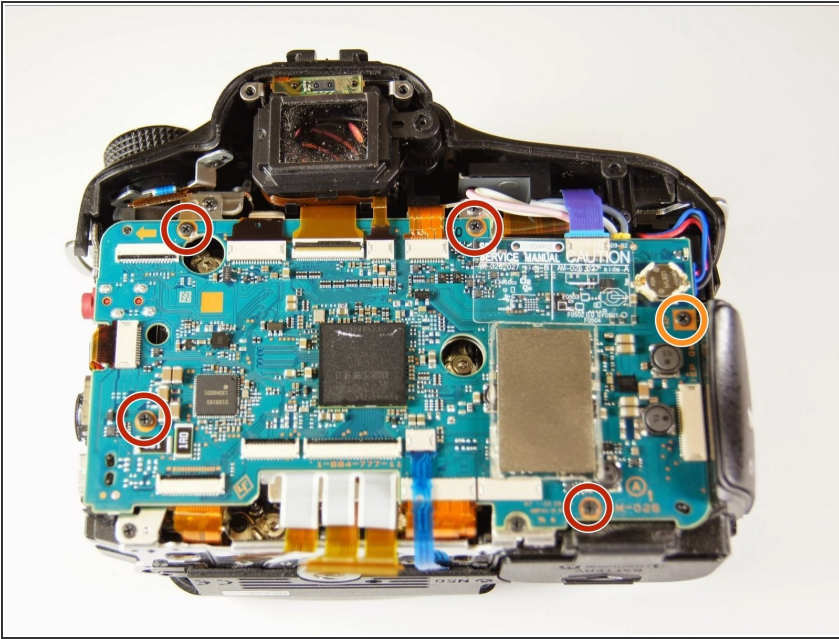
- Remove the two 4.0 mm Phillips #00 screws on the right of the camera that are located on the upper right side and under the "Remote" port flap.
- Detach the right side panel with the remote and HDMI ports of the camera by gently pulling on the panel.

Step 5



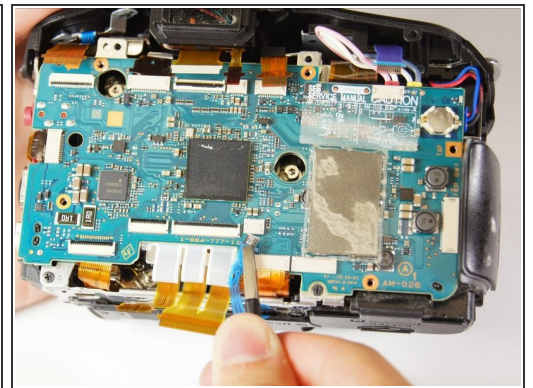
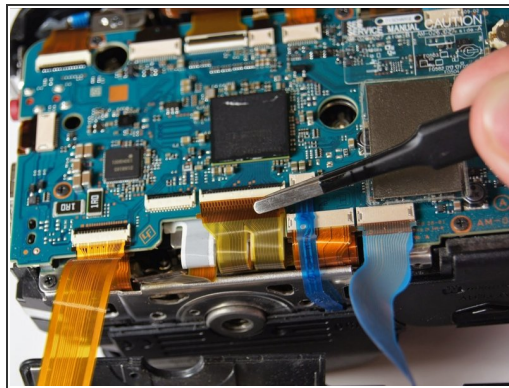
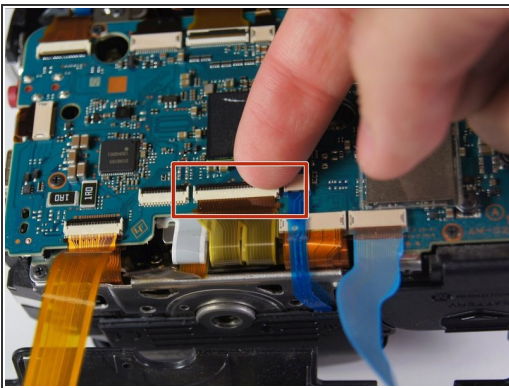
- ⓘ When the back panel is removed, be careful when moving the camera. There are parts inside the camera which now may come loose.
- Use tweezers to remove the blue and orange ribbon connectors from their connection points pictured here.

Step 6 — Motherboard



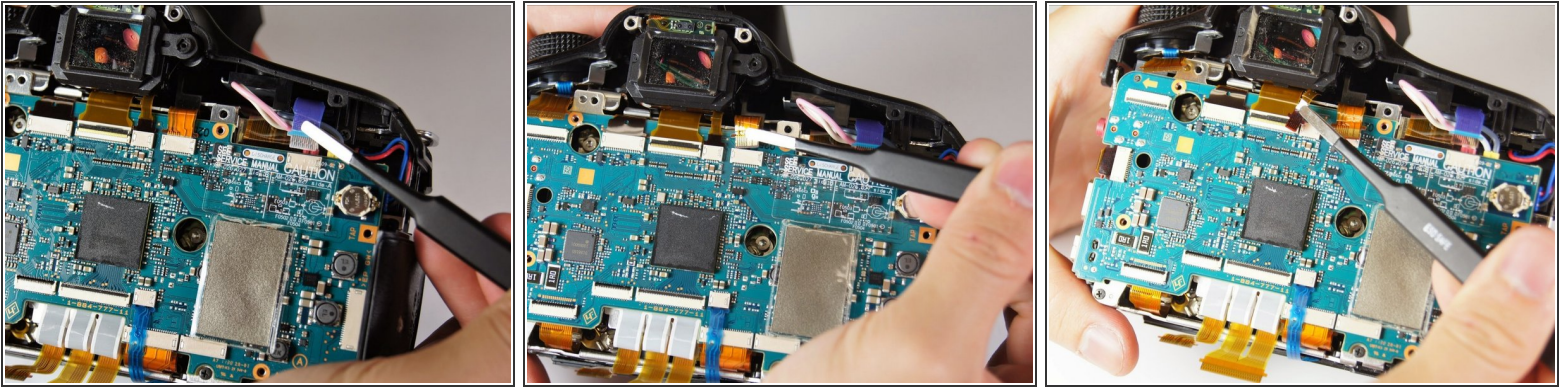
- Remove the four 3.0 mm Phillips #00 screws.
- Remove the 5.0 mm Phillips #00 screw.

Step 7



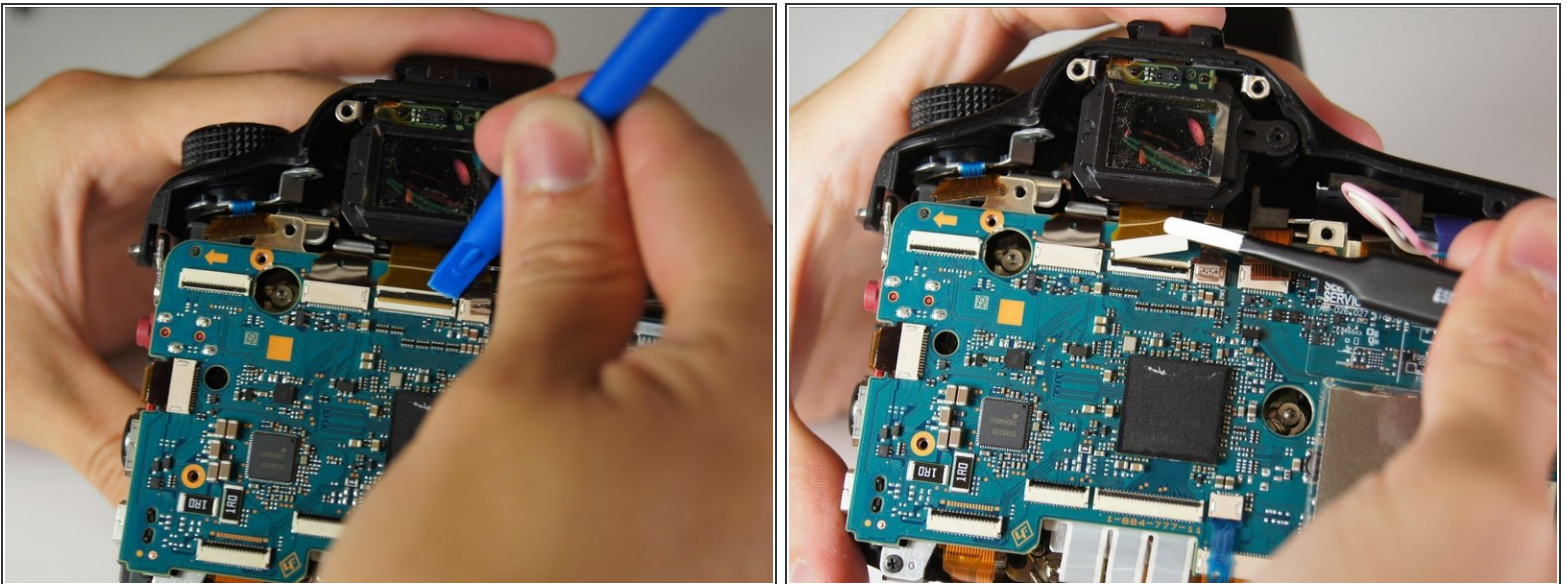
- ☑ Don't forget to close these switches and lock the film back into place when reassembling the camera.
- Use your finger to flip the switch that holds the dual ribbon connector in place.
- Gently use tweezers to disconnect the dual ribbon connector and the thin blue ribbon connector to the right of it from the circuit board.

Step 8



- Use tweezers to disconnect the blue, gold, and brown ribbon connectors near the top of the camera.

Step 9



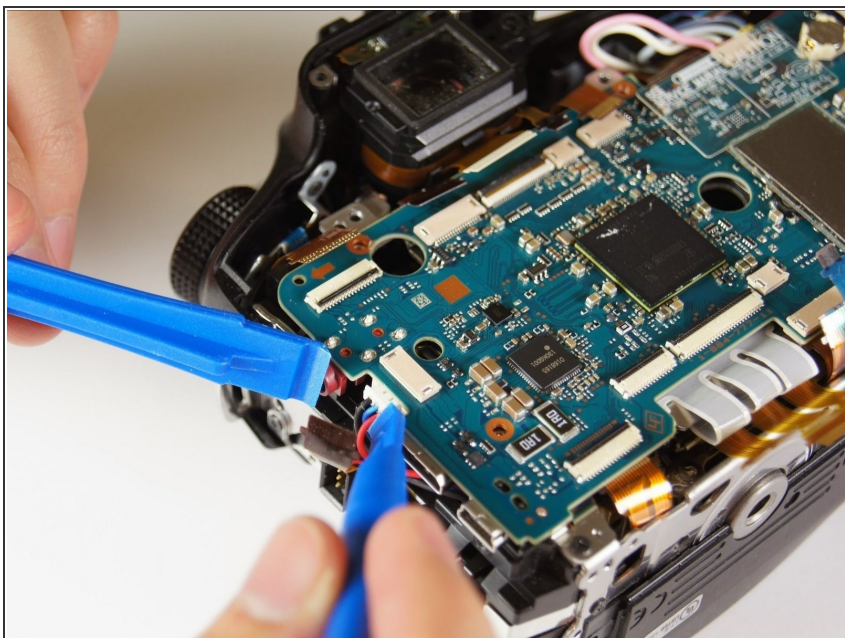
- Use a plastic opening tool to pop open the connector holding the next ribbon to the circuit board.
- Use tweezers to disconnect the ribbon.

Step 10



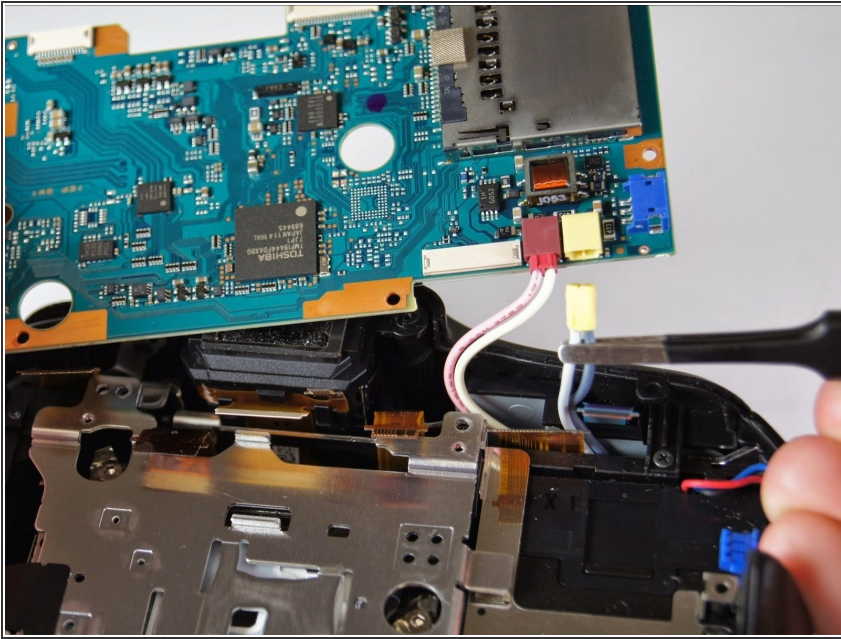
- Use tweezers to unplug the blue adapter located at the top right of the circuit board.


Step 11



- Use either plastic opening tools or tweezers to unplug the white adapter located on the right side of the circuit board.

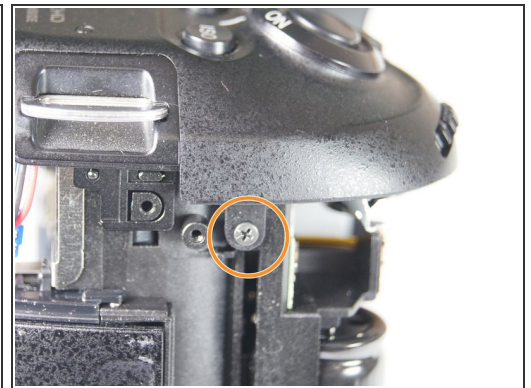
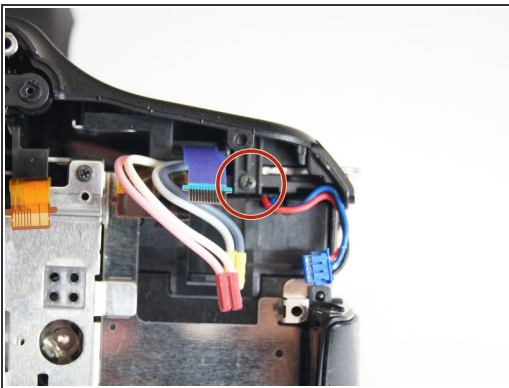
Step 12



 The circuit board will still be connected to the body of the camera by two pairs of cords.

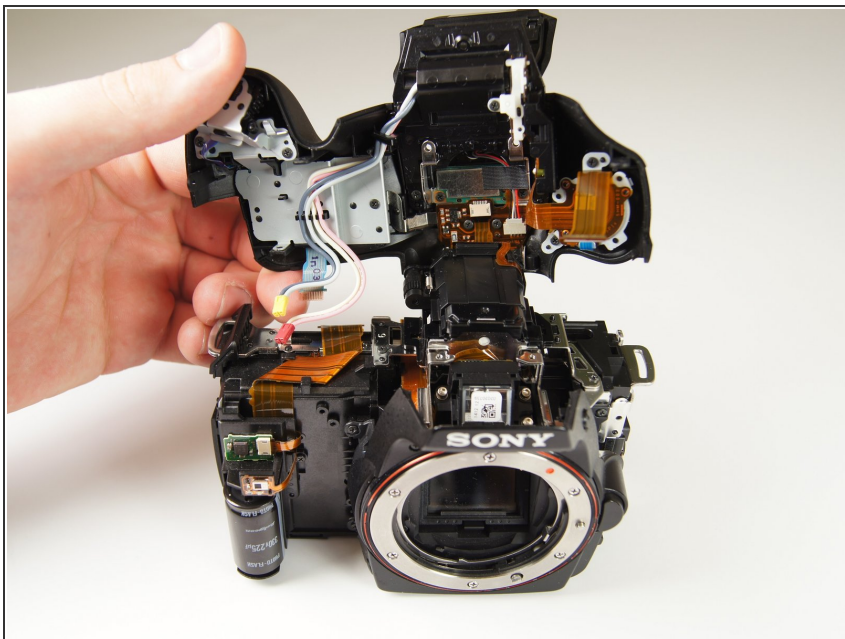
- Gently lift the circuit board away from the camera and turn it over.
- Use tweezers to disconnect the final two plugs and completely remove the circuit board from the camera.

Step 13 — Flash Unit



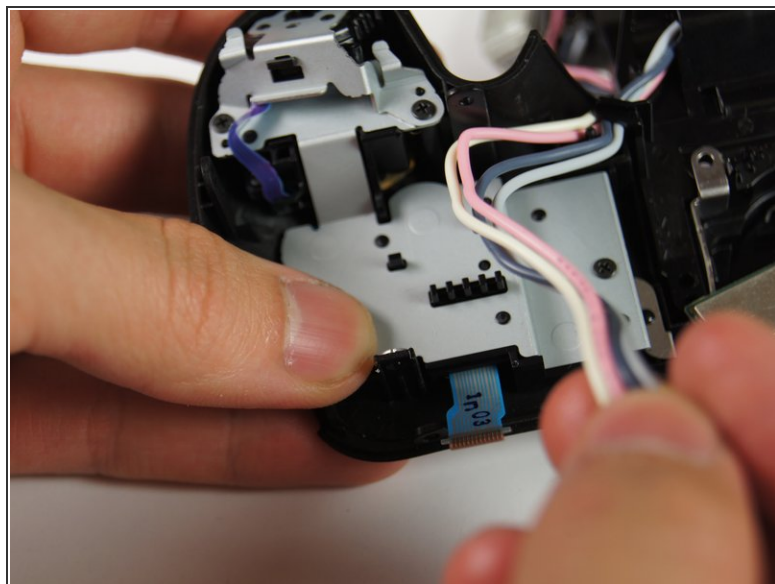
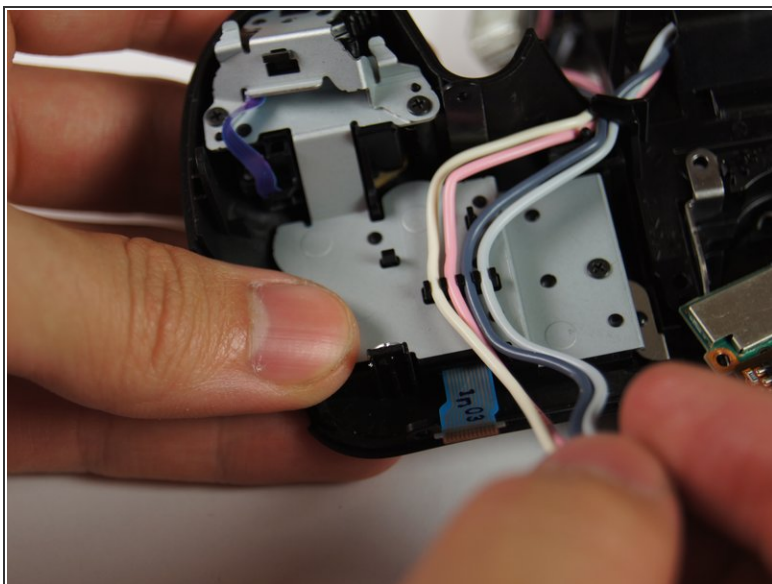
- Gently remove the 3.0 mm Phillips #00 screw on the back of the camera.
- Remove the three 5.0 mm Phillips #00 screws on the front and left side of the camera.

Step 14



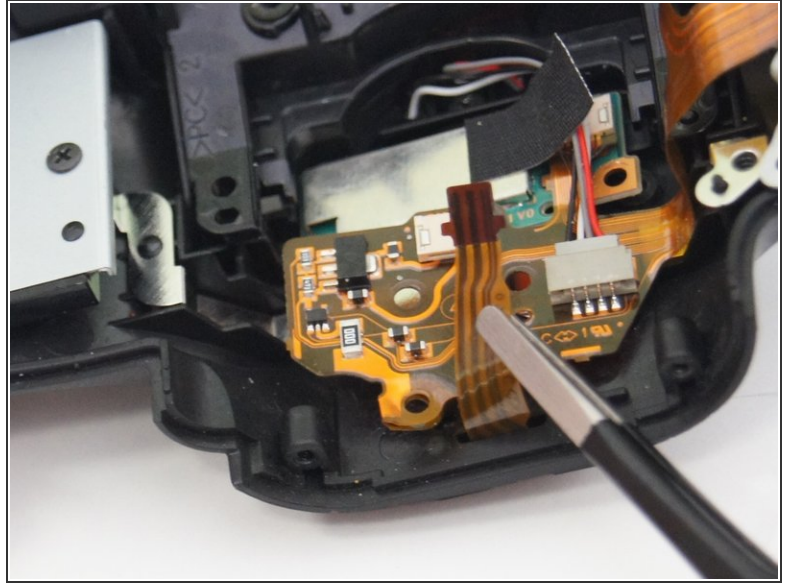
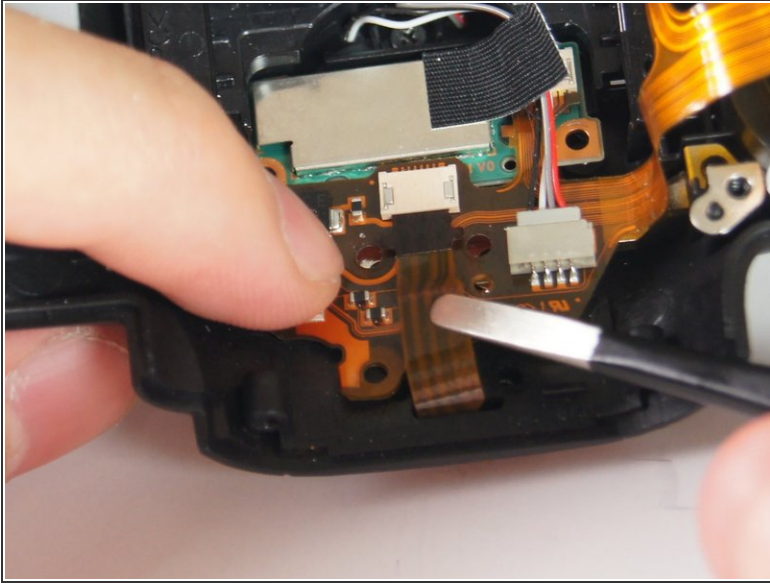
- ❗ The top cover should easily come off if the circuit board has been removed.
- Gently lift the top cover.

Step 15



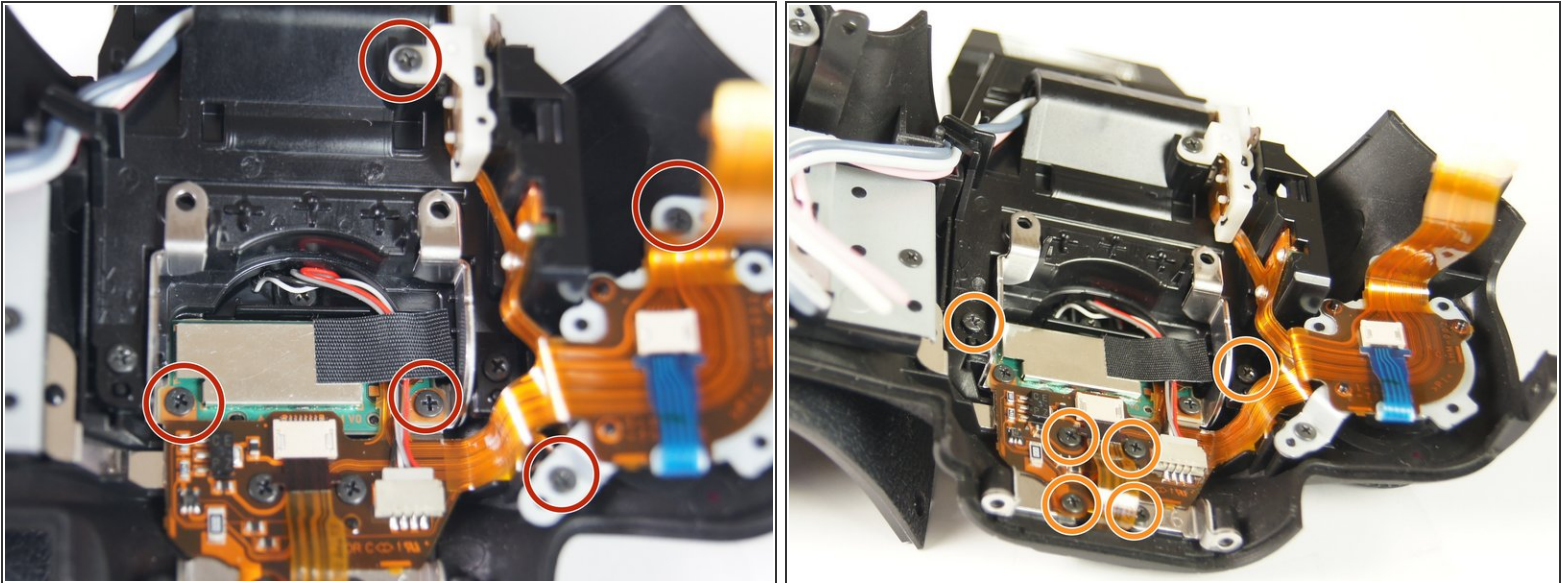
- Remove the four wires (white, pink, dark blue, light blue) from the holder with your hands.


Step 16



- Gently remove the circuit ribbon shown with tweezers.

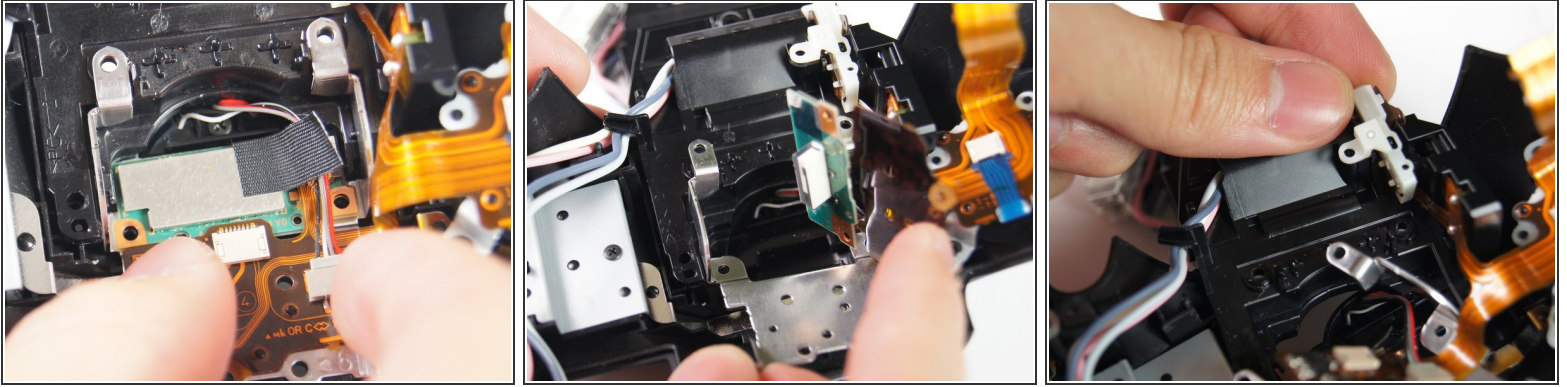
Step 17





 While completing this step, some components will become loose. Be sure to be working on a flat surface and keep track of all parts.

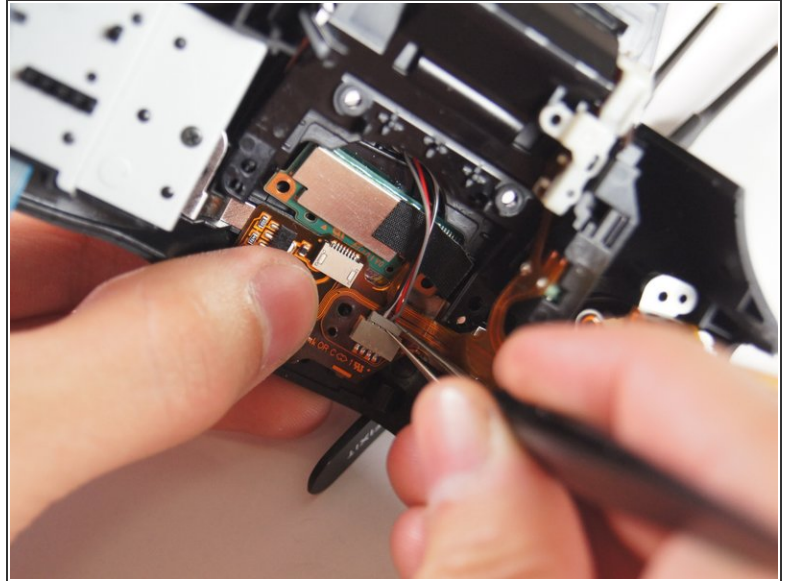
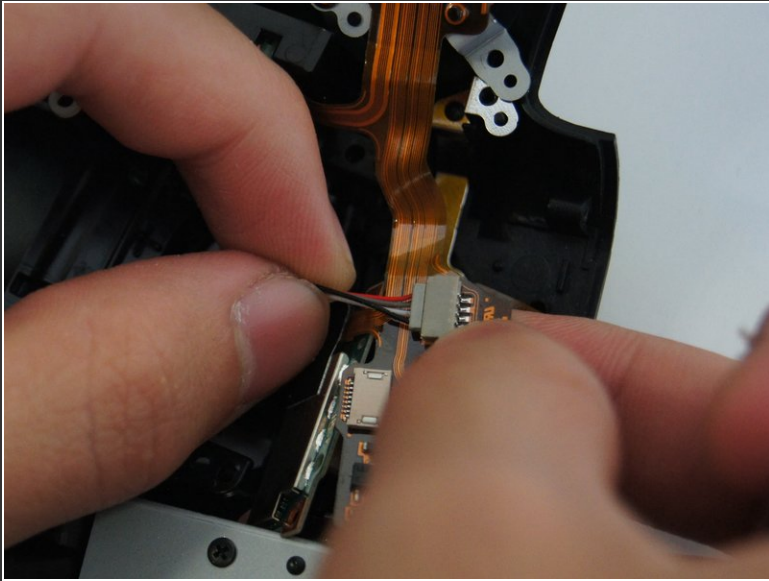
- Remove the five 3.0 mm Phillips #00 screws. It might take some force to start unscrewing these screws, but once they start to unscrew, they will become easy to take off.
- Remove the three 5.0 mm Phillips #00 screws. These screws will need more force to get started. Unscrew the screws with the part against a surface.

Step 18



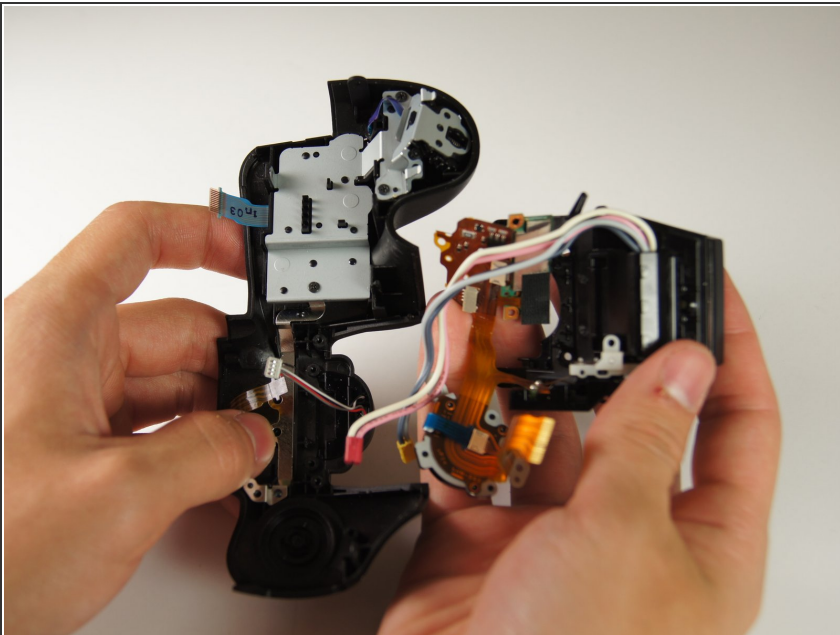
-  Keep the part flat and still. Do not forcefully and quickly pull parts out because the pieces are still connected.
-  When reassembling the device, make sure to properly place the metal frame before putting in the tiny circuit board. There are tiny holders that will hold the frame in place.
- Gently lift out the tiny circuit board with your hands. A metal frame and a tiny side attachment should come off too.
- If it does not come off, lift out the white connector piece.

Step 19



- Slowly disconnect the wire from the board using your hands or with tweezers. It may take some wiggling. Try pulling from both sides to disconnect the wires more easily.

Step 20



⚠ Be careful to not pull too fast. Also, make sure none of the wires get caught as you pull the flash unit away.

- Pull the flash unit away. It should come off very easily.

To reassemble your device, follow these instructions in reverse order.