



# Minolta Maxxum STsi Function Dial Replacement

Replace the function dial on the top of the camera.

Written By: Jasper Kahn



---

# INTRODUCTION

Having trouble selecting camera functions? Top dial a little sticky or damaged? This guide will instruct you on how to remove and replace it.

---



## TOOLS:

- [Coin](#) (1)
  - [Metal Spudger](#) (1)
  - [Phillips #00 Screwdriver](#) (1)
  - [Tweezers](#) (1)
-

## Step 1 — Main Battery



- Use the edge of a coin to twist open the battery compartment on the bottom of the camera. (Twist counterclockwise)

## Step 2



- When the compartment opens, pull the AA battery out of its slot.

## Step 3 — Top Cover



- Remove the black Phillips #00 5mm screw at the bottom of the battery chamber.
- ⓘ If it is too dark to see the screw, it may help to use a flashlight.

## Step 4



- Take out two silver Phillips #00 5.0 mm screws on each side of the viewfinder.



## Step 5



- Open the flash and take out the silver Phillips #00 4.0 mm screw underneath it.

## Step 6



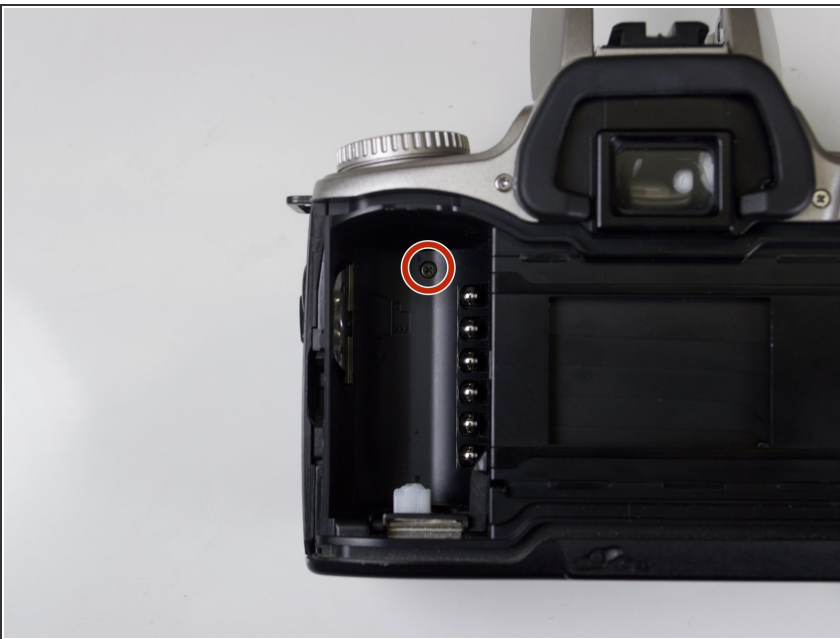
- Open the back-cover of the camera using the back-cover release found on the lower right side of the camera.

## Step 7



- Remove the black Phillips #00 4.0 mm screw from the inside top right section of the camera.

## Step 8



- Remove the black Phillips #00 5.0 mm screw from the back of the film compartment.

## Step 9



- Remove the seven black Phillips #00 5.0 mm screws from the bottom panel. The bottom panel is now free to come off.

## Step 10



- Take out two black Phillips #00 2.5 mm screws on the right side panel of the camera.

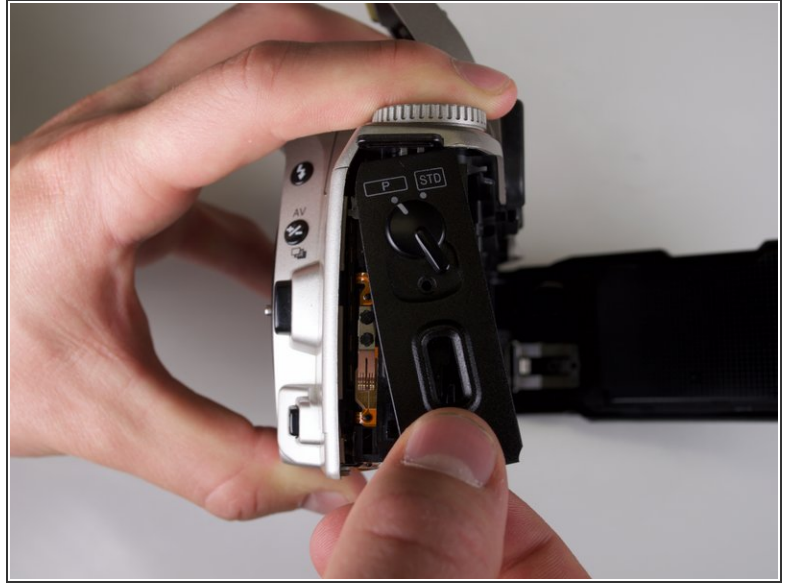
## Step 11



- Starting beneath the "SPOT" button, use the round side of the metal spudger and firmly pry underneath the grey top panel of the camera. Work your way counterclockwise around the camera prying at different spots until the top panel starts to come loose. Pry all the way around until you reach the "STsi" logo.
- ⓘ This prying will not completely release the top cover. It is also necessary to take off the side panel, as explained in the next step.

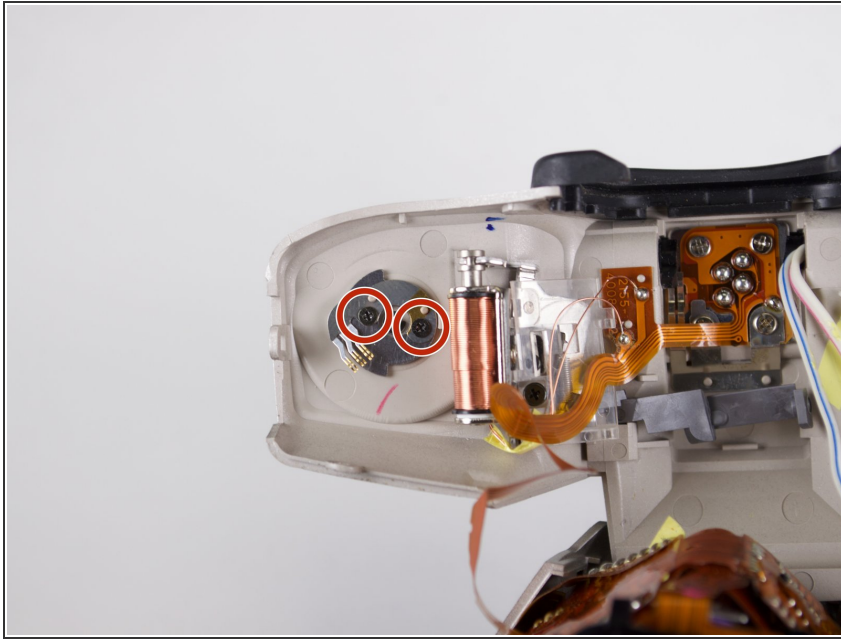



## Step 12



- ⚠ Be careful when removing the right side panel. There is a plastic component underneath the side panel that will come free. Note the orientation of this plastic component for reassembly because it is connected to the back-cover release switch.
- ⚠ Also be gentle when removing the top panel because it is delicate and is connected by wires.
- Carefully remove the right side panel by grasping it at the bottom and rotating it counter-clockwise. The top panel is now free to snap off.

## Step 13 — Function Dial



 Before taking out the two silver Phillips #00 screws, note the orientation of the two silver metal rings between the screw heads and the function dial. These rings will fall out once the screws are removed, and their orientation must be correct upon re-assembly in order for the function dial to work.

- Remove the two silver Phillips #00 2.5 mm screws attached to the bottom of the dial on the inside of the top panel.

## Step 14



- Using the tweezers, remove the dial from the top of the camera.

To reassemble your device, follow these instructions in reverse order.