



# Disassembling Ridgid R86034 Housing

Prerequisite Only

Written By: Nathan Hoyt



---

## INTRODUCTION

Removing the housing to get to the components beneath.



### TOOLS:

- [T10 Torx Screwdriver](#) (1)
  - [Metal Spudger](#) (1)
-

## Step 1 — Disassembling Ridgid R86034 Housing



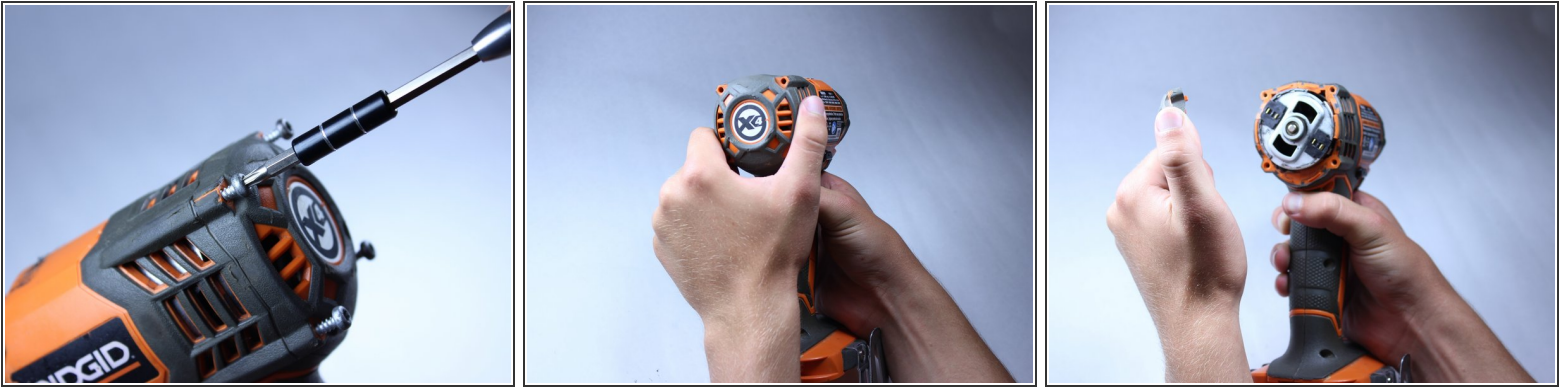
- Use the flat side of a metal spudger to peel the black rubber cover off of the casing.
- ⓘ Use some force; the rubber cover is securely attached to the housing.
- ★ Rotate the casing until it fits onto the housing with no gaps between it and the clear cover.
- ⓘ Orientation is important when putting the rubber cover on the casing.

## Step 2



- Remove the plastic cover with your hands.
- ⓘ There is no need to force off the plastic cover. The plastic cover should be much easier to remove than the rubber cover.

### Step 3



- Unscrew the four 16 mm long screws from the back panel with a T10 Torx Screwdriver.
- Use a firm grip to peel off the back panel. It is sealed tight and requires a good amount of force to remove.

### Step 4



- Unscrew the eight 15 mm T10 Torx screws from the housing
- ⓘ The screw hole located nearest the battery port is deep and small. Most screwdrivers with replaceable bits will **not** fit into the hole. Instead, use a conventional screwdriver that fits.

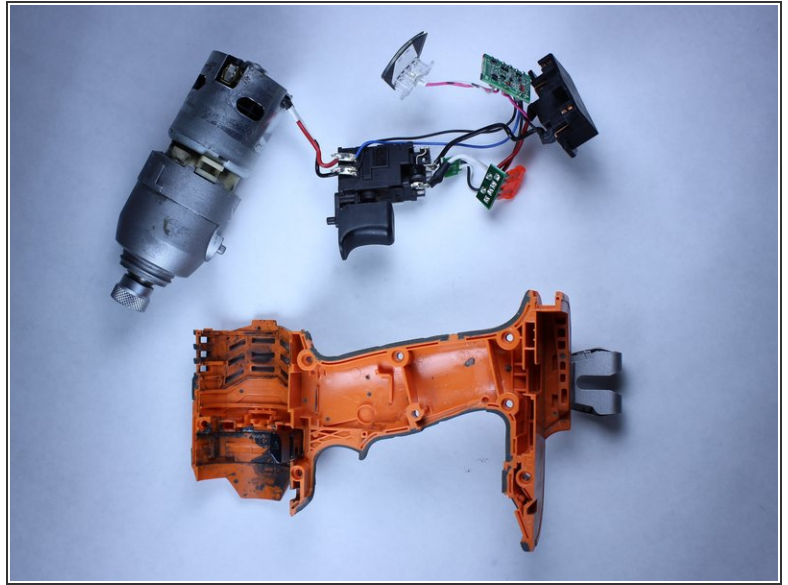
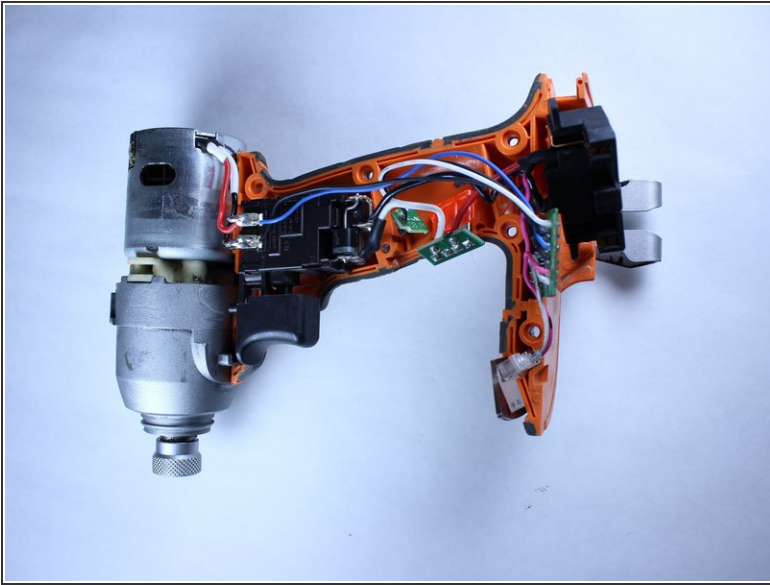


## Step 5



- ⚠ Place the driver flat on a table before completely separating the two halves of the housing so components of the drill don't fall out during opening.
- Pry apart the two halves of the housing at the back side of the driver using the metal spudger.
- ℹ The housing is easier to remove if you pry from multiple sides.

## Step 6



Do not remove the direction switch.



Pull out **all** electrical components from housing by hand.



Lift out the motor.



Follow the wires.



The components should come out of their respective slots with ease and require little force to lift out.



The circuit board located nearest the battery pack and the LED light will be hard to pull out.



Remember to precisely place all components in their correct slots with their correct orientations when reassembling.

To reassemble your device, follow these instructions in reverse order.