



Sega CD Teardown

Complete disassembly of Sega CD

Written By: Ryan Kotzebue





TOOLS:

- [Phillips #00 Screwdriver](#) (1)
 - [Spudger](#) (1)
-

Step 1 — Sega CD Plastic Housing Removal



- Using a Phillips head screwdriver remove six screws from the bottom of the console.
- The six screws are marked.

Step 2



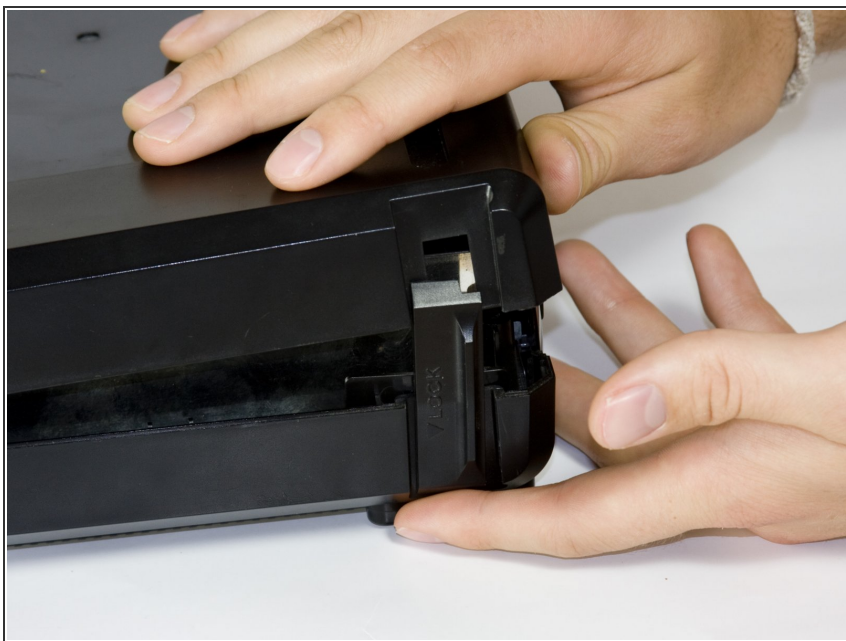
- Remove the two screws that attach the Genesis' connector to the rest of the console.
- The two screws are marked in the diagram.

Step 3



- Slide the lock tab to the left to separate the halves of the console.

Step 4



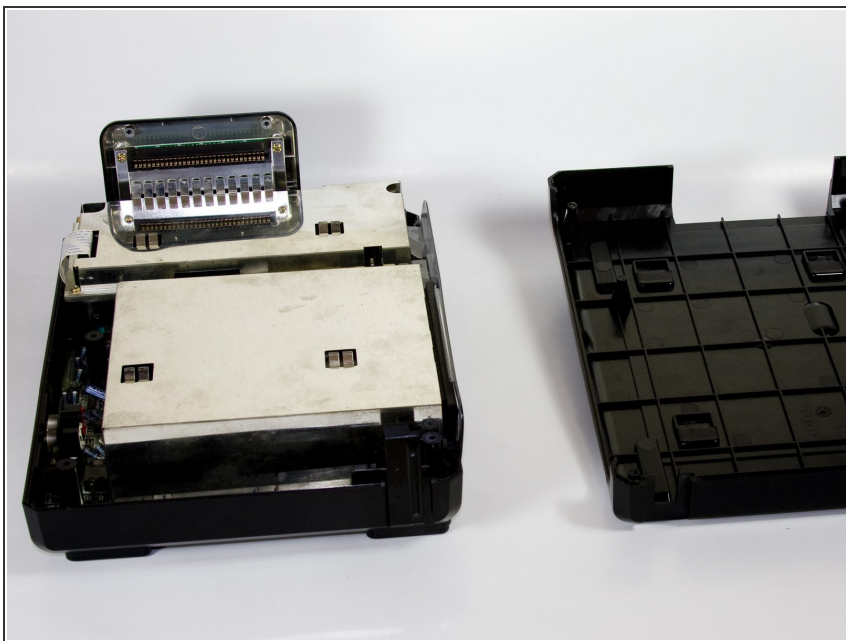
- Lift from the left side to remove the top of the case.

Step 5



- Using the spudger, pry the cover off of the Genesis attachment.

Step 6



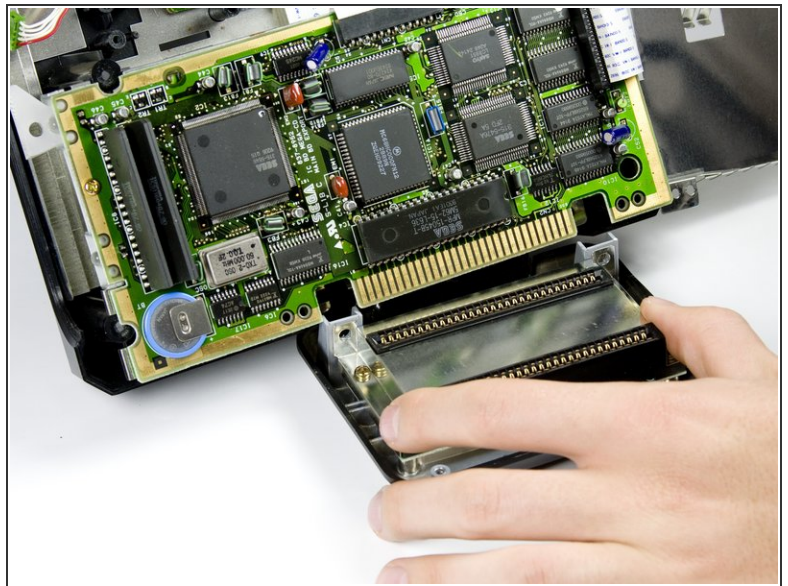
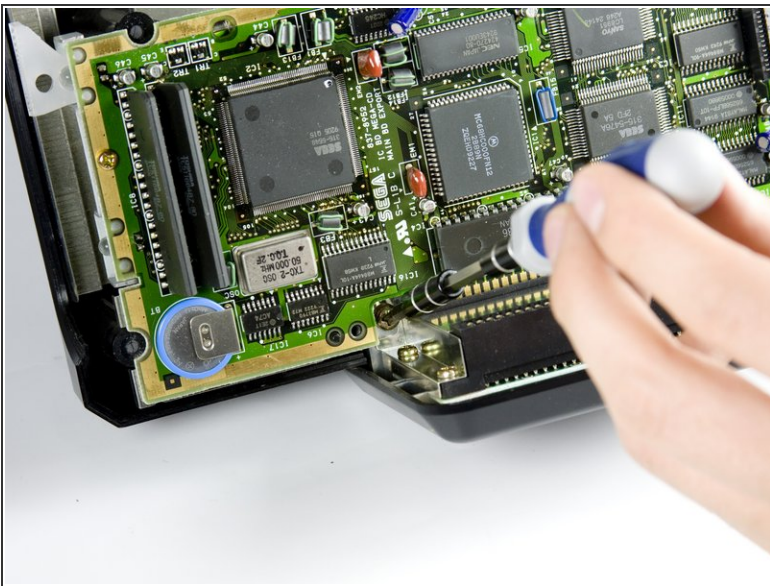
- Lift the top of the case to remove the cover.

Step 7



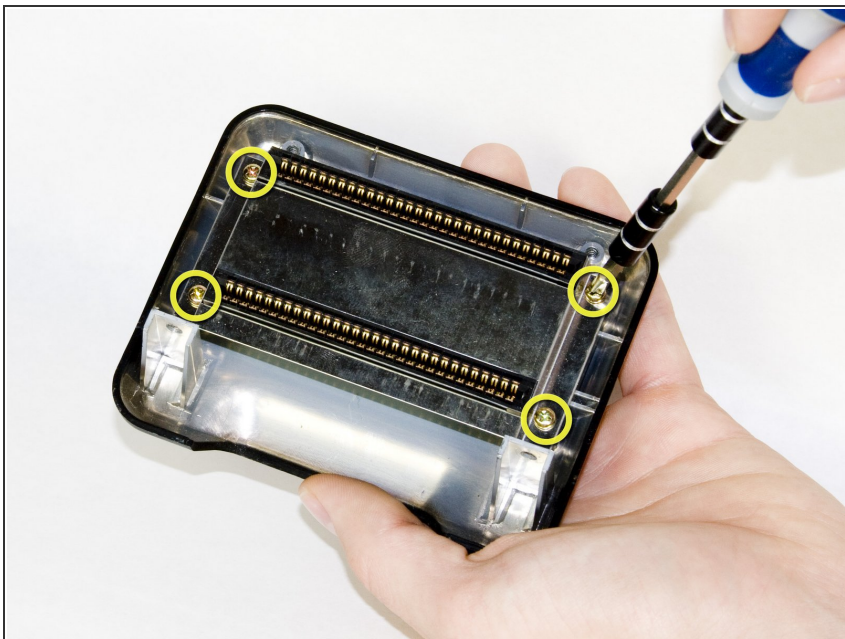
- Remove the faceplate by pulling it up, then out.

Step 8 — Genesis Connector



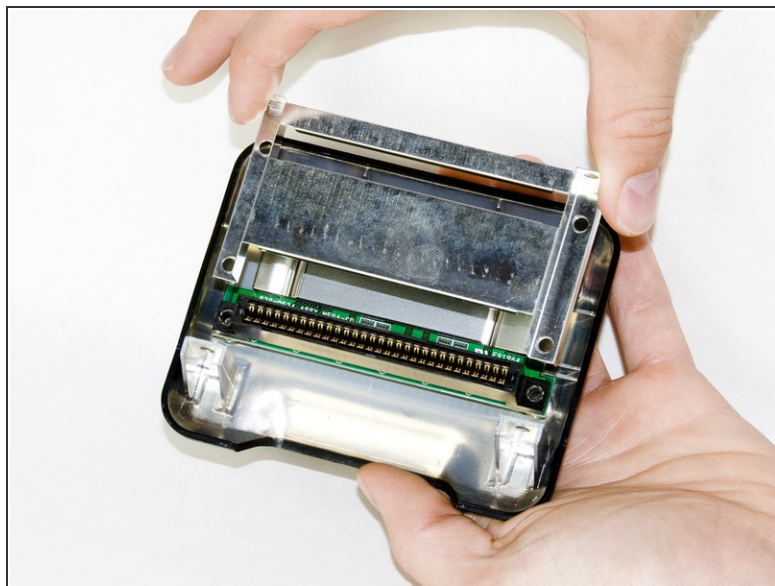
- Using a #00 Philips screwdriver remove the two screws that attach the Genesis adapter to the console.
- Disconnect the adapter from the console by carefully pulling the adapter out.

Step 9



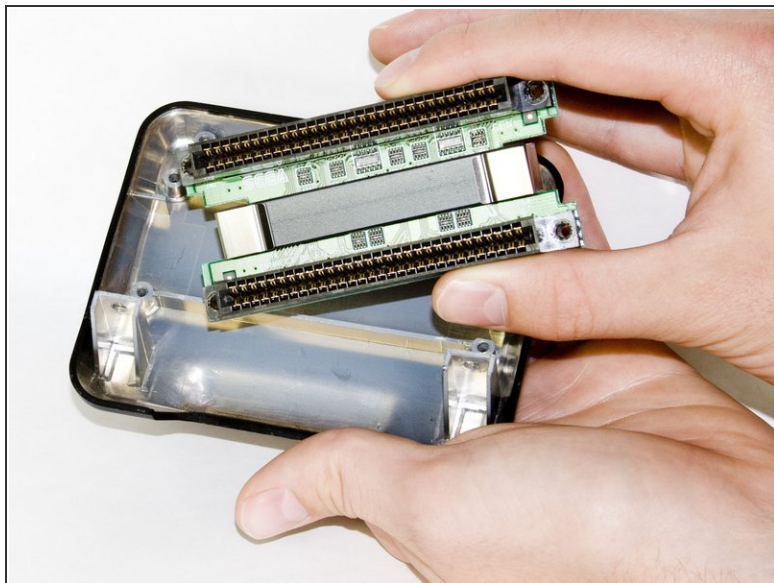
- Remove the four screws from the metal plate as shown using a #00 Philips screwdriver.
- The four half inch bronze screws are indicated by the yellow marking circles.

Step 10



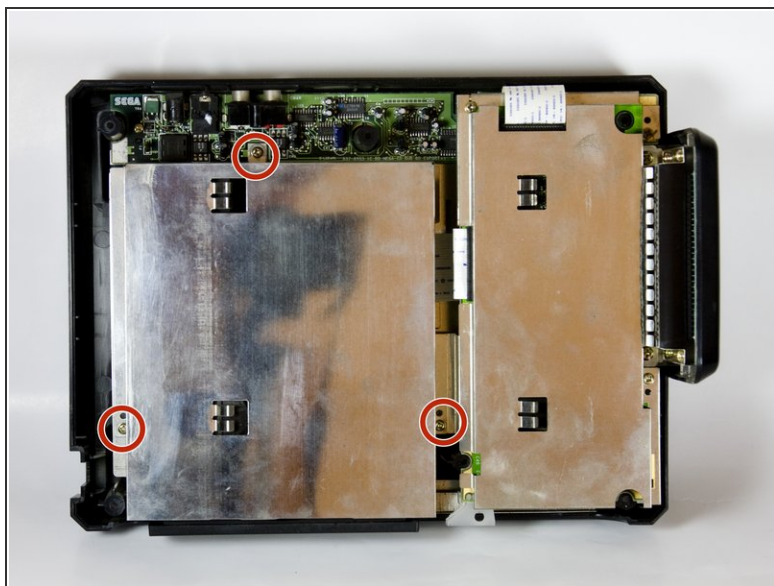
- Carefully remove the metal cover from the connector by sliding the cover up and out.

Step 11



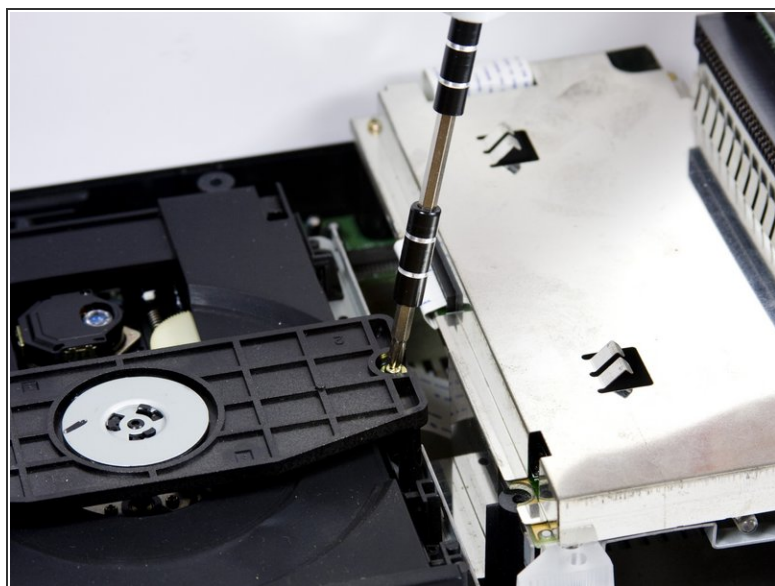
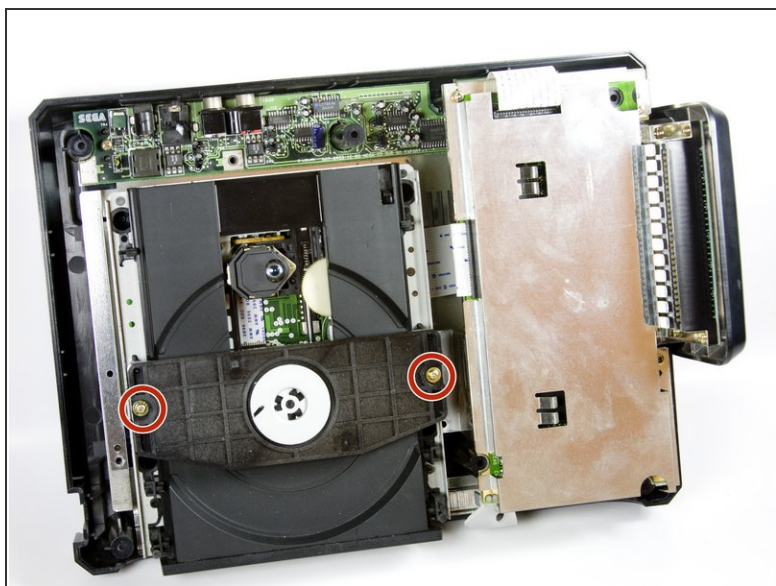
- Remove the connector from the housing.

Step 12 — CD Tray



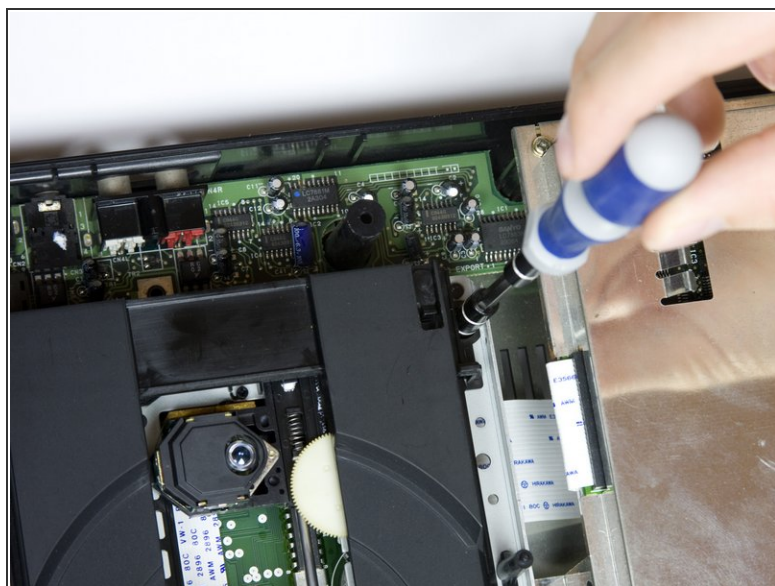
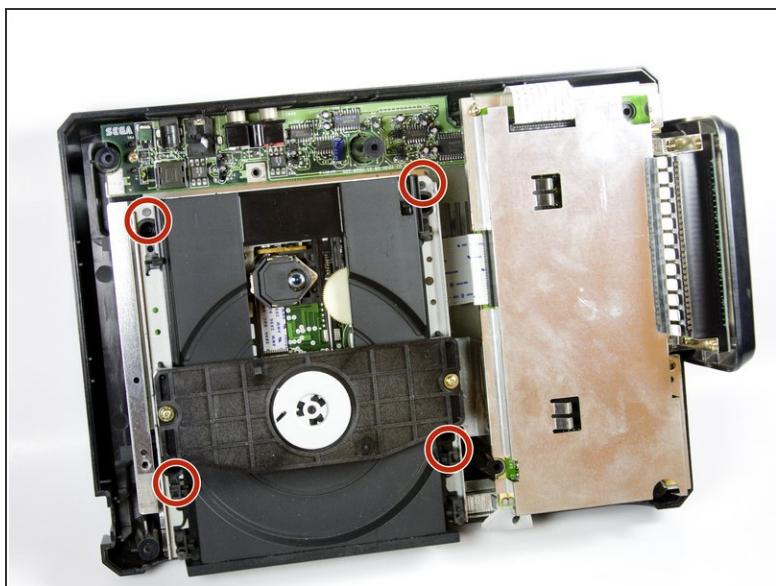
- Remove metal plate by unscrewing the three screws with the Phillips head screwdriver and then lifting the plate.
 - The three screws are shown on the diagram.

Step 13



- Remove the two screws from the plastic bar.
- The two screws are shown pictured.

Step 14



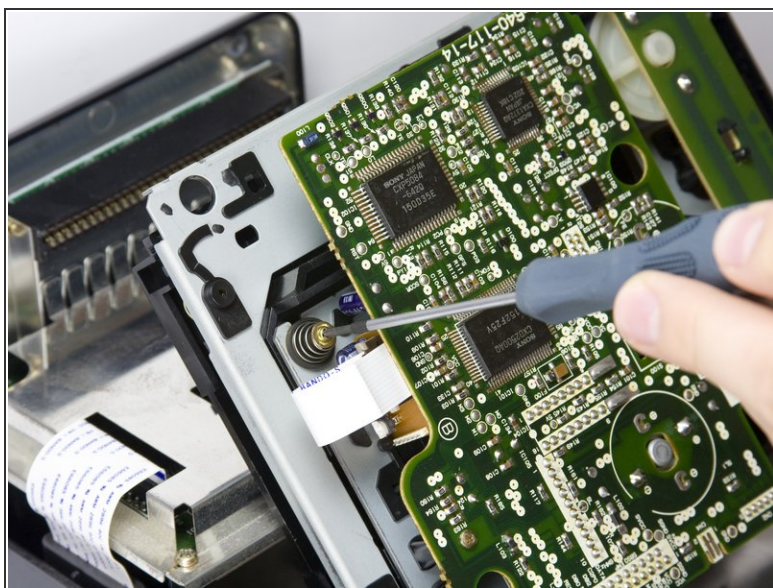
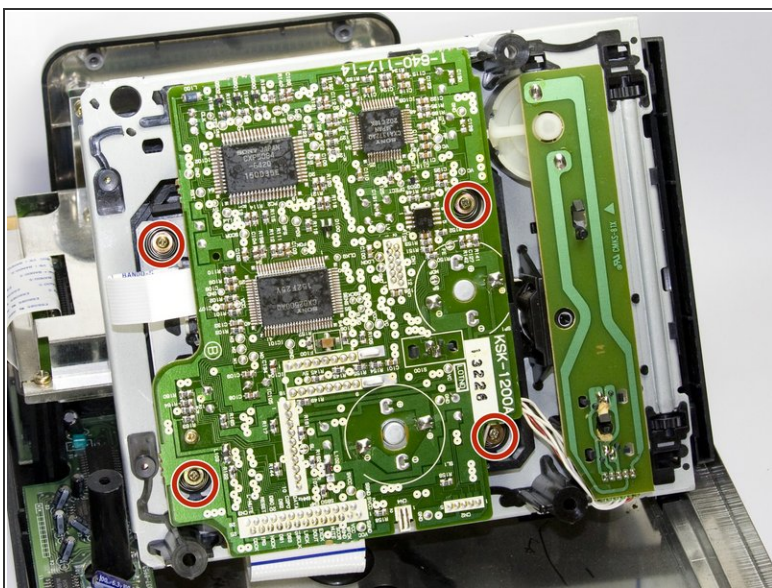
- To remove the CD tray
- Remove the four screws with the Phillips head screwdriver.

Step 15



- Carefully unplug the wire connected to optical reader.

Step 16

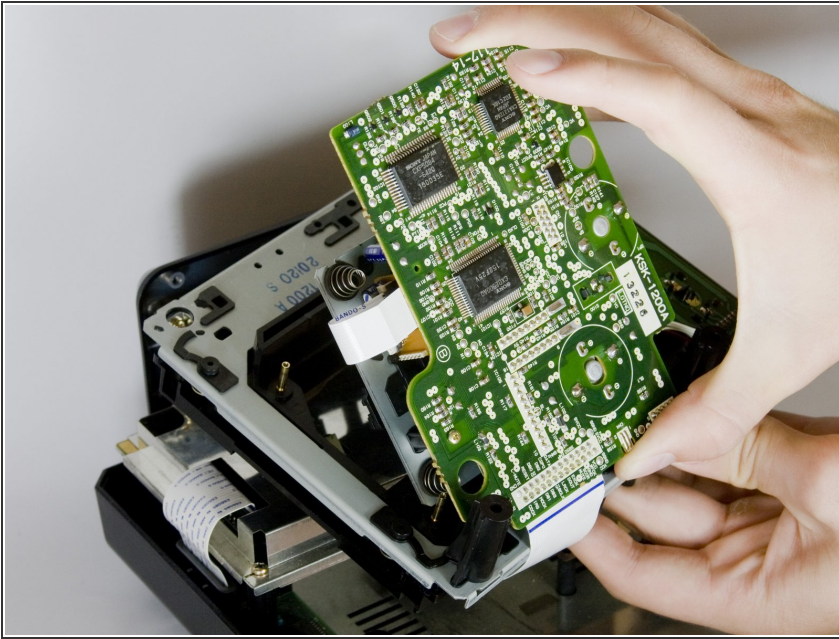


- Remove the four screws on the underside of the CD tray with a small Phillips head screwdriver.
 - The four screws are highlighted on the diagram.



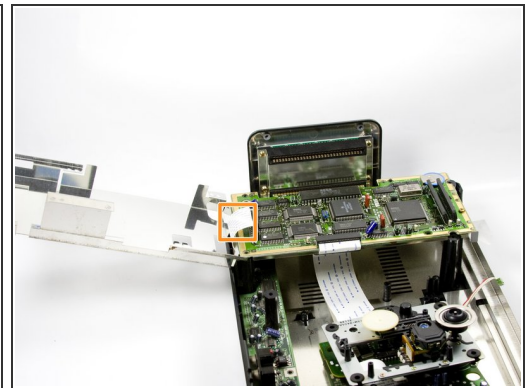
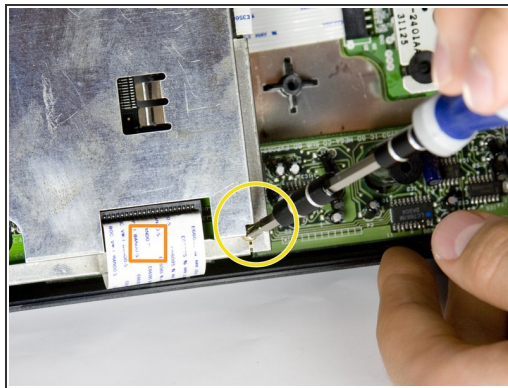
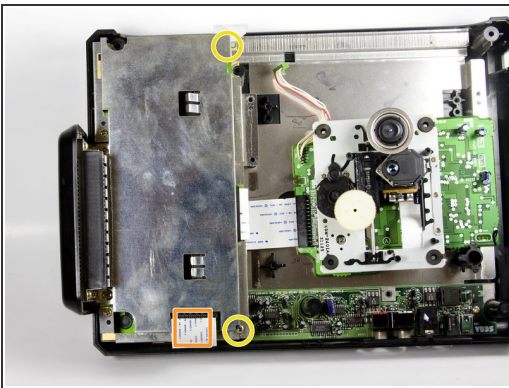
The four springs below the circuit board are attached to the screws, so be careful not to lose them when you remove the screws.

Step 17



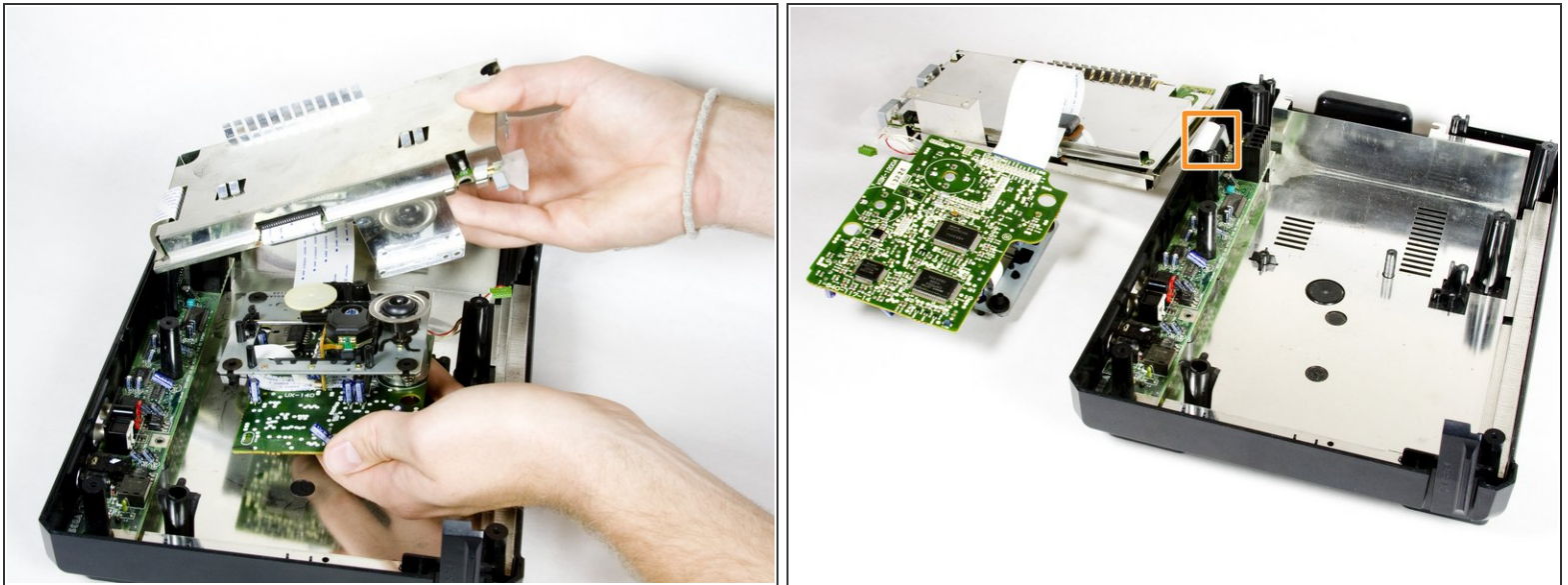
- Carefully remove the CD tray from circuit board.

Step 18 — Motherboard/AC Power Board



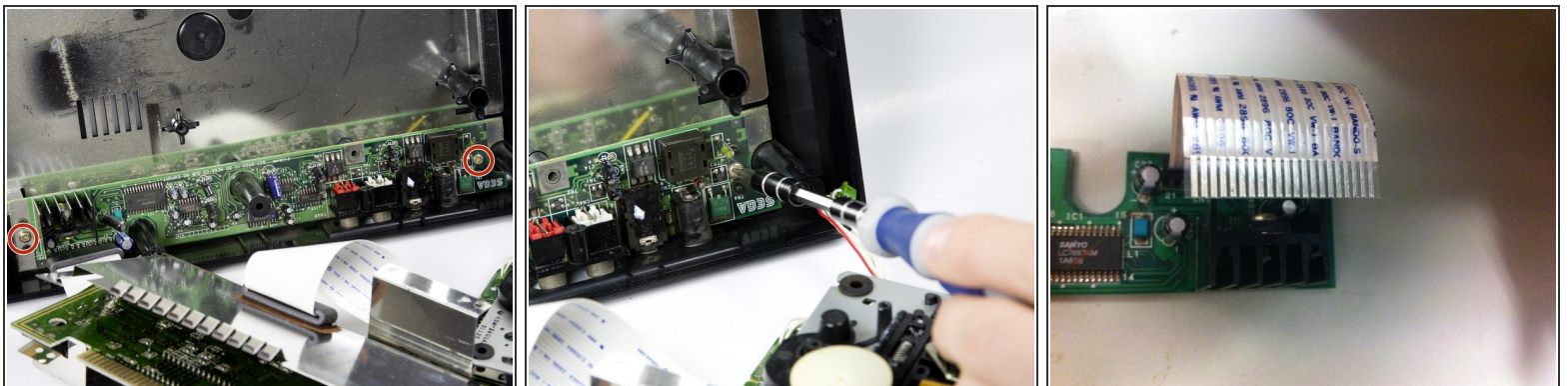
- Remove the two bronze screws from the metal plate with a medium Phillips head screwdriver.
 - The screws are marked on the diagram.
- Carefully lift the metal plate up to expose the motherboard.
 - There is a wire strip running through the metal plate that is soldered to motherboard and power supply board. The plate cannot be completely removed. Do NOT force plate upwards. All the ribbon cables can be safely unplugged by simply pulling them out of their slots.

Step 19



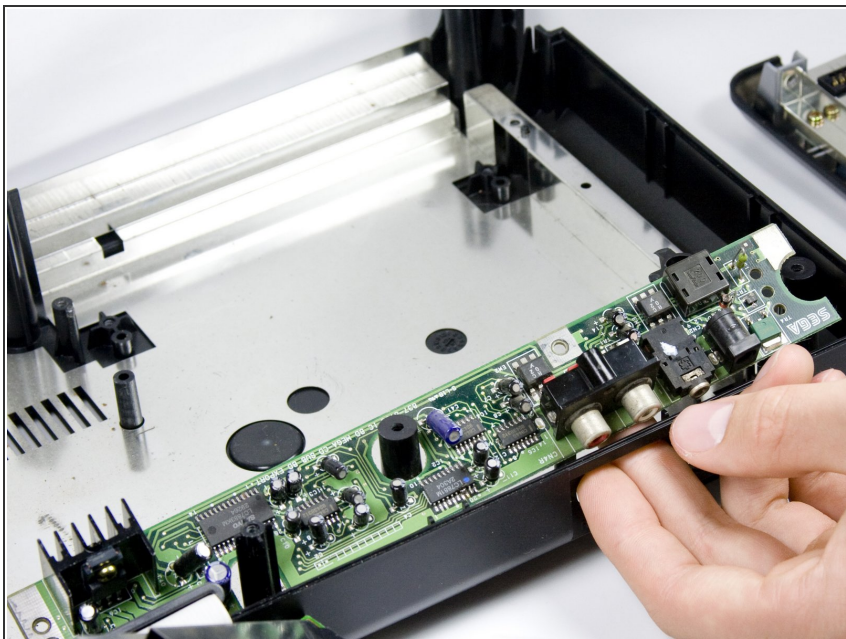
- Carefully lift off the metal plate, the motherboard, and the CD tray circuit board. Then, flip each piece over, as pictured.

Step 20



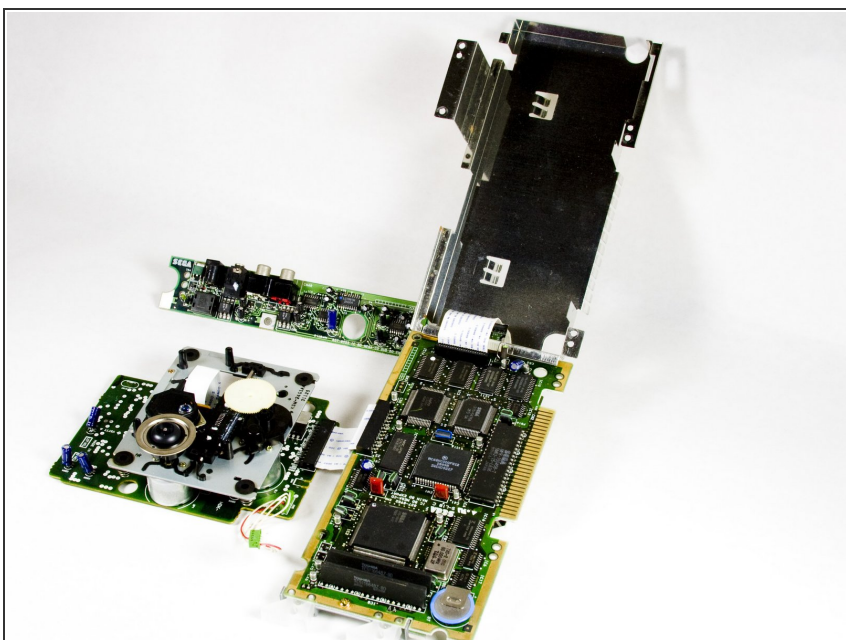
- Remove the two screws from the power supply using a medium Phillips head screwdriver.
 - The two screws are marked on the diagram.

Step 21



- Remove the power supply unit from the console by lifting the unit up.

Step 22



- This is what the motherboard unit will look like once removed.

Step 23 — Sega CD Teardown



- Teardown complete!

To reassemble your device, follow these instructions in reverse order.