



Sony CPF-IP001 Subwoofer Replacement

Guide shows how to replace subwoofer.

Written By: Mike Bolton



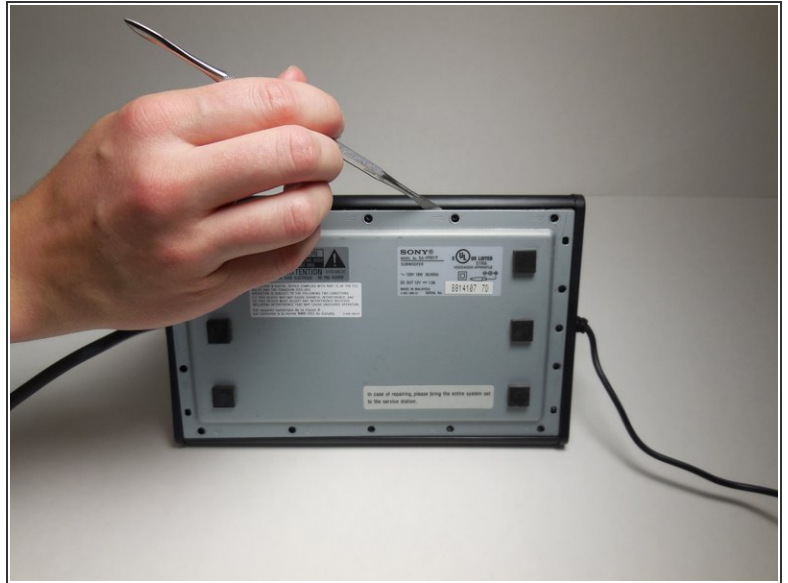
INTRODUCTION

This guide will show you how to replace the subwoofer speaker if you hear muffled or distorted sound coming from the subwoofer unit.

TOOLS:

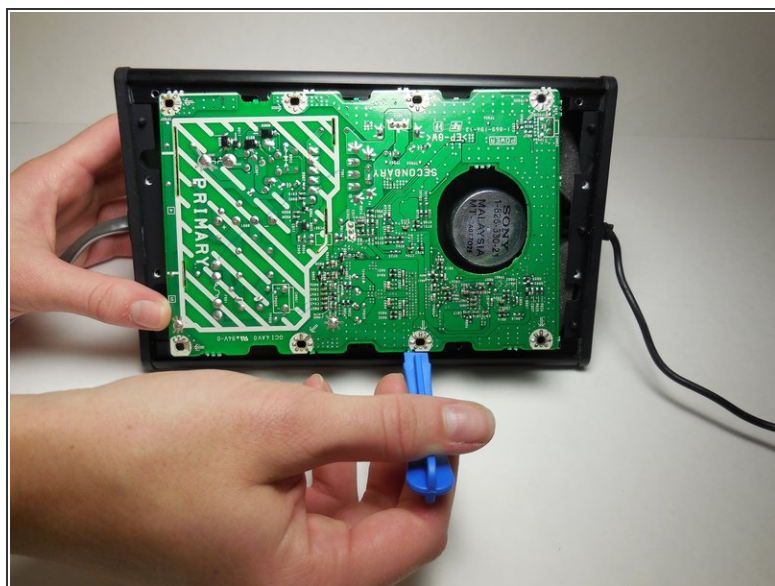
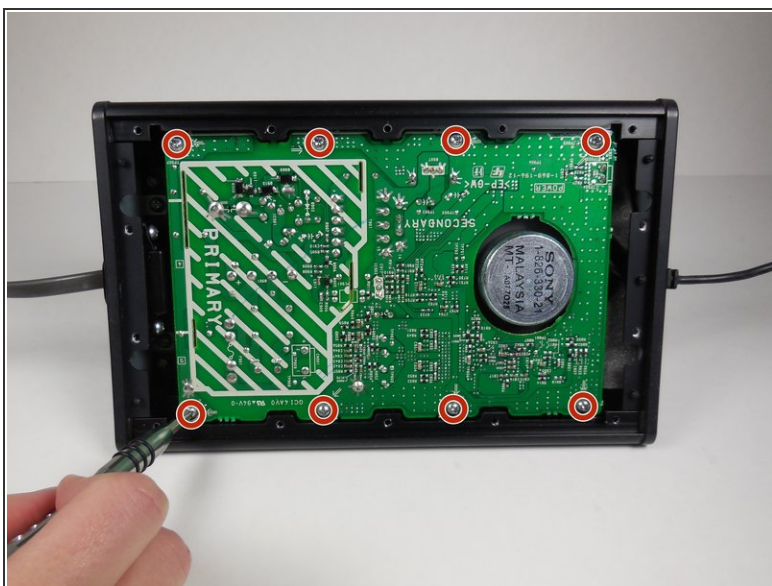
- [Metal Spudger](#) (1)
 - [Phillips #2 Screwdriver](#) (1)
 - [iFixit Opening Tools](#) (1)
 - [Tweezers](#) (1)
-

Step 1 — Subwoofer Housing Disassembly



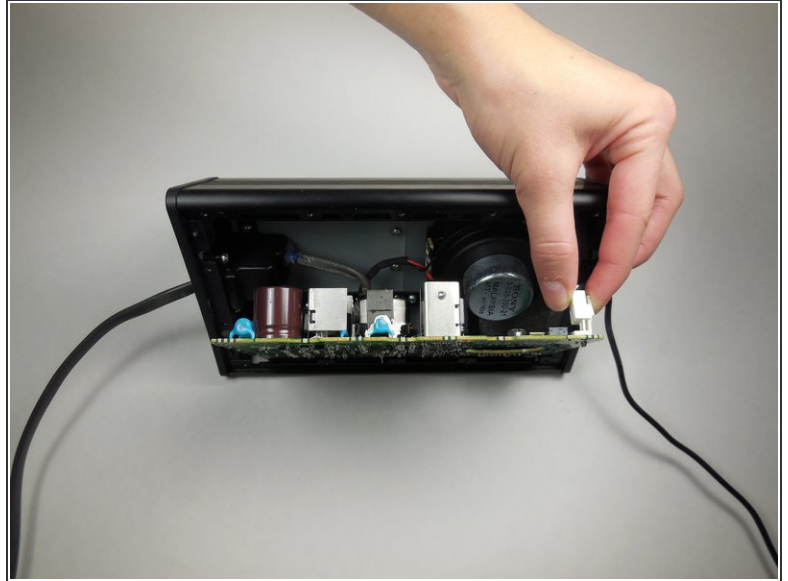
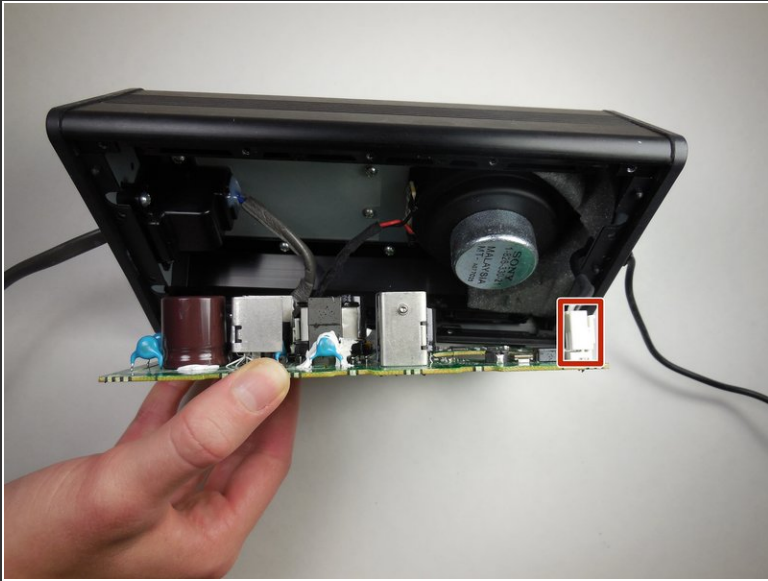
- Remove fourteen 8 mm Phillips #2 screws from the bottom of the subwoofer.
- Once all of the screws are removed, the cover can be taken off using a metal spudger.

Step 2



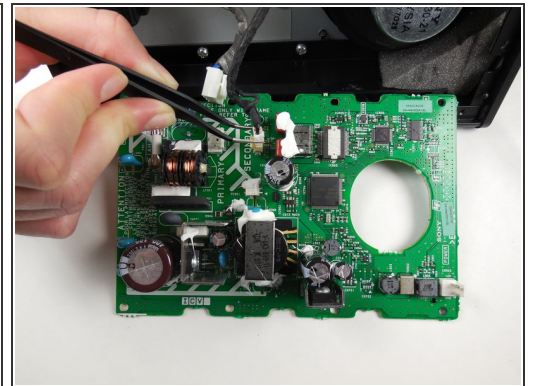
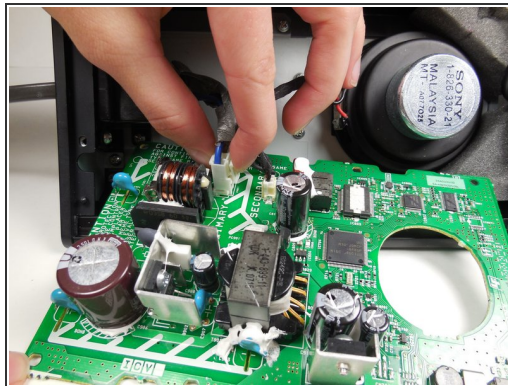
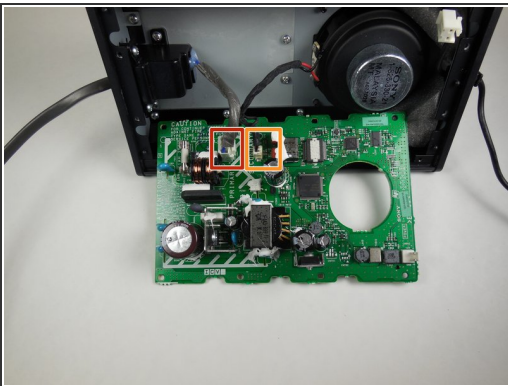
- Remove eight 14 mm Phillips #2 screws holding the circuit board in place.
 - Using the plastic opening tool, carefully remove the circuit board.
- ⚠ There will be 3 wires connected to the opposite side of the circuit board. Be careful not to pull the board out of the device too far and damage these wires.

Step 3



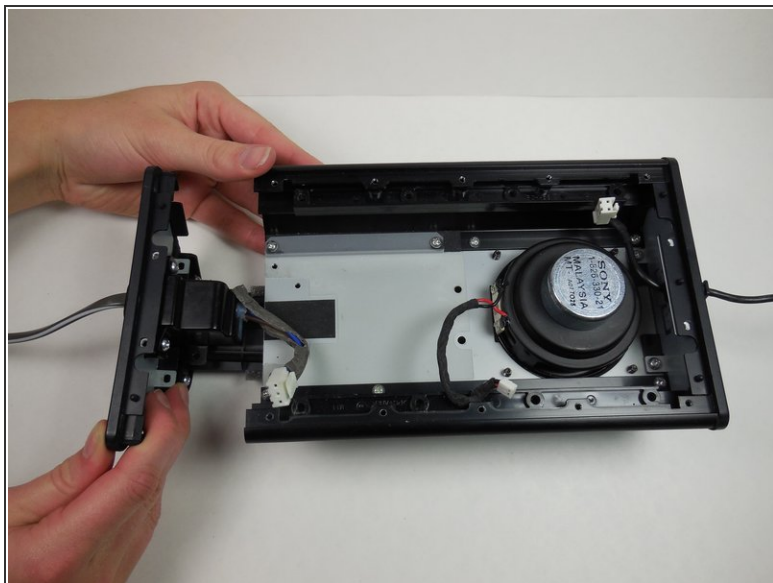
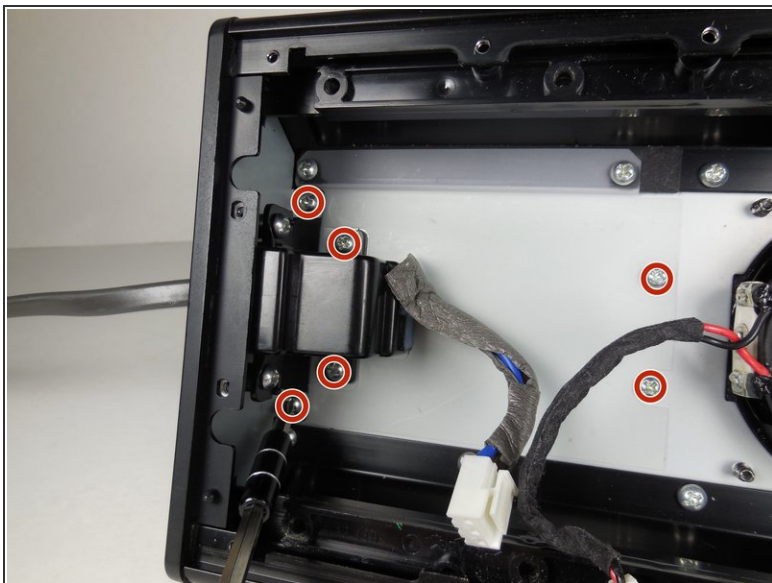
- Remove the first of the three wires by squeezing the clip and pulling it out.
- ❗ After disconnecting the first wire, the two attached wires can be more easily accessed.

Step 4



- Remove the wire furthest to the left by squeezing the clip and pulling it out.
- Detach the third wire by carefully using the tweezers.
- The circuit board is now completely detached and can be set aside.

Step 5



- Remove six 8 mm Phillips #2 screws.
- Slide the side panel with the power cord out from the housing.
- ⓘ The side panel with the power cord will come out as a whole unit with the subwoofer air tunnel.

Step 6 — Subwoofer



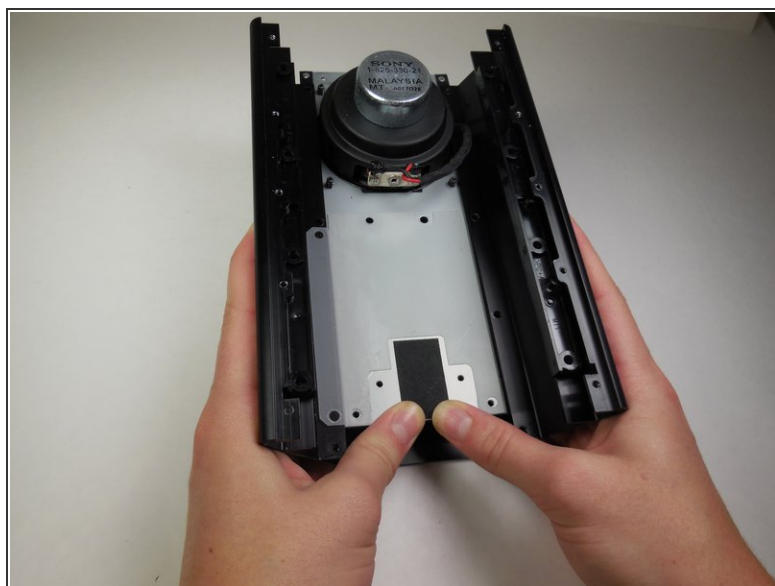
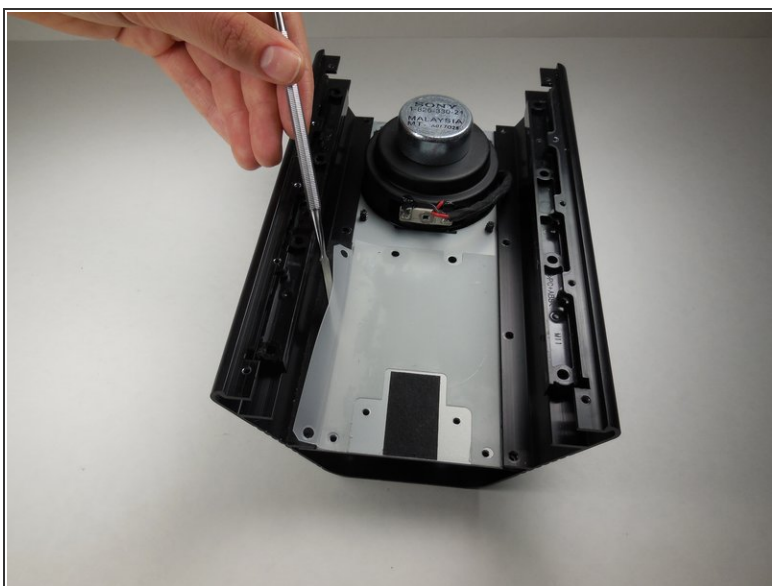
- Remove two 8 mm Phillips #2 screws holding the side panel in place.

Step 7



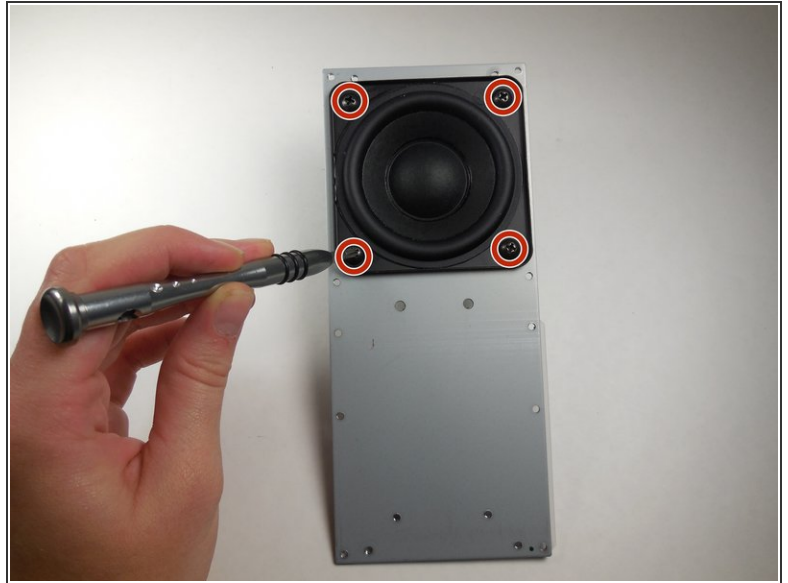
- Remove eight 8 mm Phillips #2 screws holding the subwoofer tray to the housing.

Step 8



- Using a metal spudger, slightly peel back the plastic that has been glued to the tray and the housing.
- Slide the tray containing the subwoofer out of the housing.

Step 9



- After removing the tray, flip it over and you will find four screws connecting the subwoofer.
- Remove four 7.5 mm Phillips #2 screws.

Step 10



- The subwoofer has now been removed from the device and can be replaced.

To reassemble your device, follow these instructions in reverse order.