



Nintendo DSi Touchscreen Replacement

This guide is a prereq.

Written By: Walter Galan



INTRODUCTION

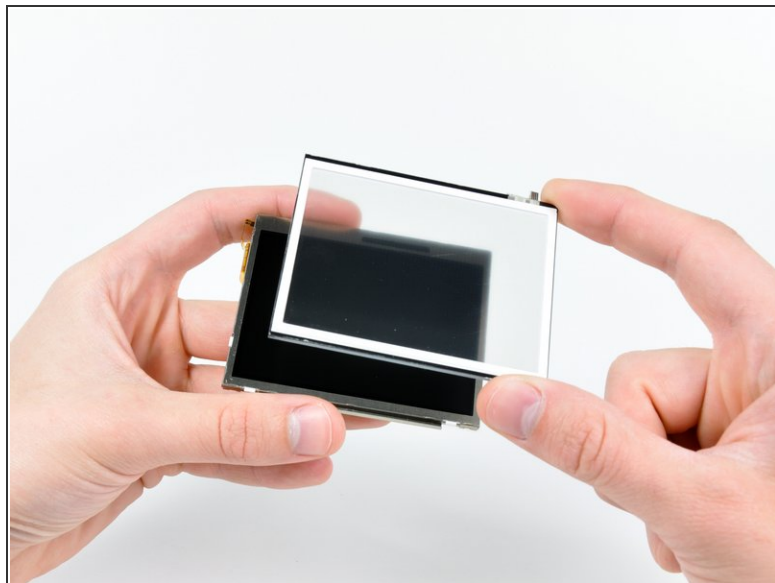
This guide is a prereq.



TOOLS:

- [iFixit Opening Tools](#) (1)
-

Step 1 — Touchscreen



- Insert the edge of a plastic opening tool between the lower touchscreen and the lower LCD.
- Carefully run the edge of the opening tool along the perimeter of the touchscreen to detach it from the lower LCD.
- Remove the touchscreen from the lower LCD.

To reassemble your device, follow these instructions in reverse order.