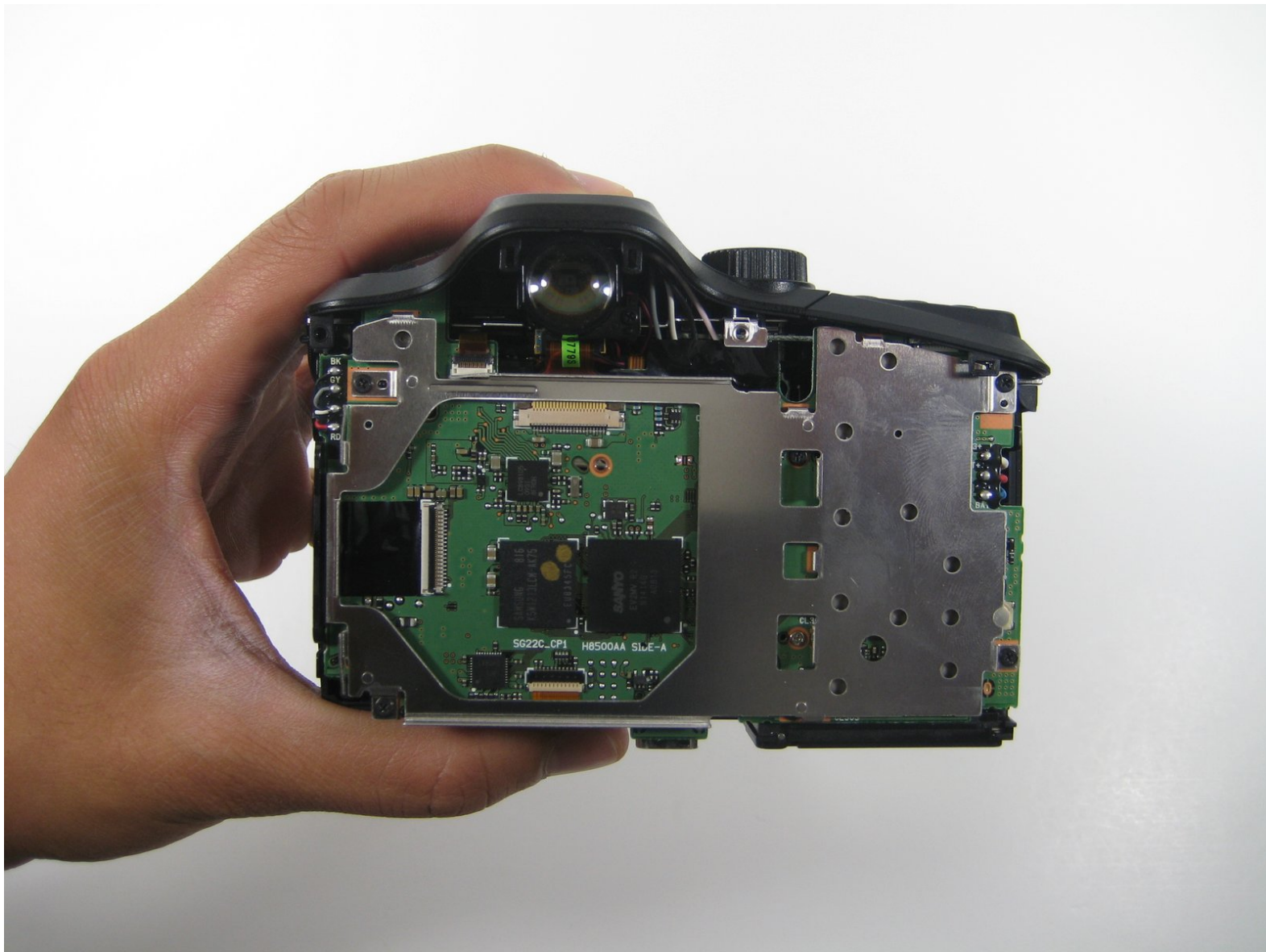




# Kodak EasyShare Z1015 IS Internal frame Replacement

This guide is a step by step manual on removing the internal frame from the camera, exposing the logic board for repair or replacement.

Written By: Jack



---

## INTRODUCTION

The internal frame of the Kodak EasyShare Z1015 IS separates the logic board from the LCD screen. To remove it from the camera, follow this guide.



### TOOLS:

- [iFixit Opening Tools](#) (1)
  - [Phillips #00 Screwdriver](#) (1)
-

## Step 1 — Battery



- Begin by sliding the switch towards the open symbol. Release your finger from the switch and the battery case will pop open.

## Step 2



- Next, press down on the red lever which holds the battery in place.

### Step 3



- Once the battery has popped out of the compartment, simply pull it out of the camera.

### Step 4 — Back Cover



- ⚠ Make sure that the lens cover is on the Kodak EasyShare whenever working with one of these guides.
- ⚠ Also, make sure to keep track of the screws you remove throughout these step by step guides. Losing a screw could inhibit the ability to reassemble the camera.
- Begin by removing the first screw located on the back of the camera.



## Step 5



- Next, remove the two screws located on the right side of the camera.

## Step 6



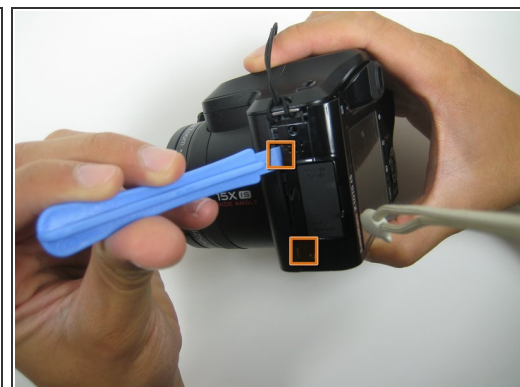
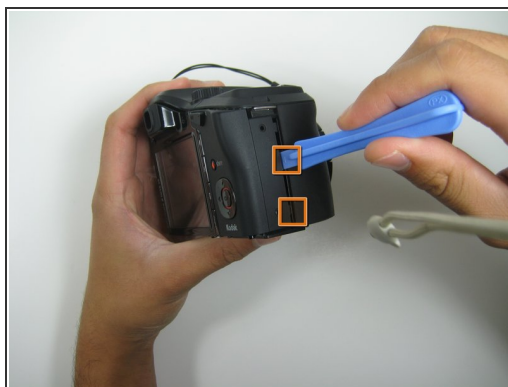
- After removing the screws located on the right side, remove the six screws located on the bottom of the camera.

## Step 7



- Lastly, remove the two screws located on the left side of the camera.

## Step 8



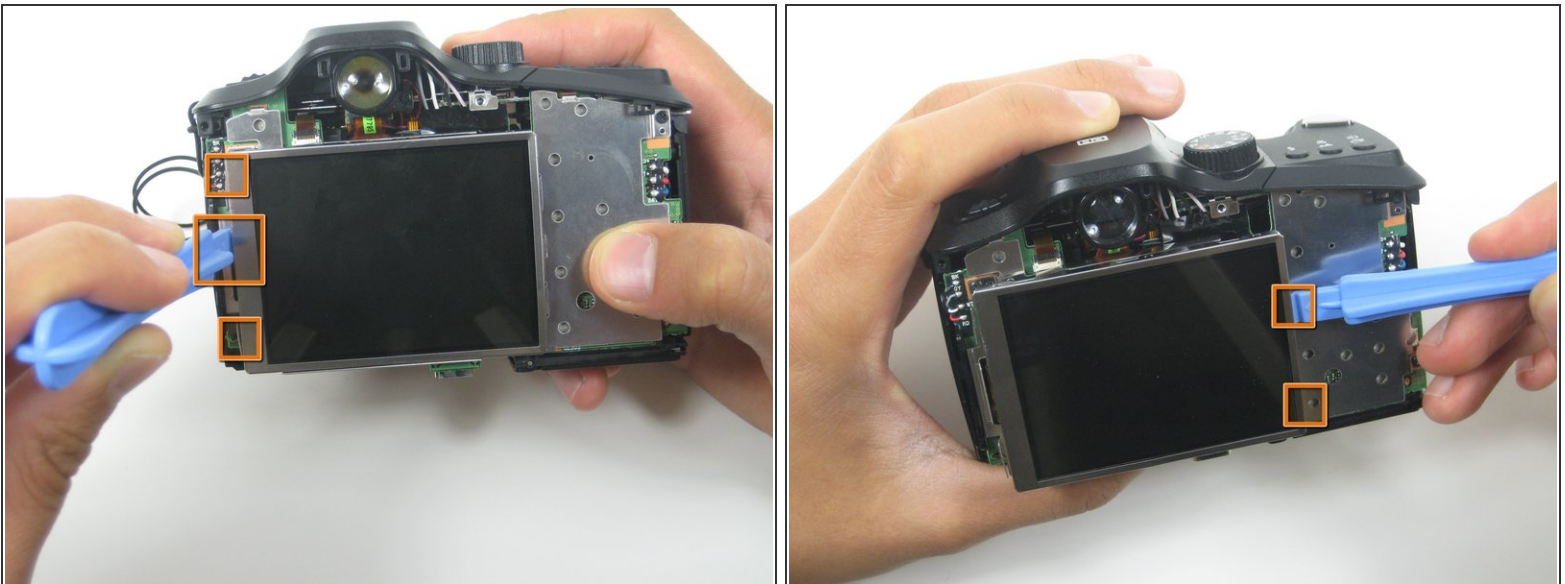
- Once all eleven screws have been removed, use Plastic Opening Tools to take off the back cover.
  - Insert the plastic opening tool and apply leverage on each side of the camera. The recommended spots to apply leverage are shown in these pictures.

## Step 9



- Apply pressure on the left and right side of the camera and pull the back cover away from the device.
- Once the back cover has been successfully removed, you should have a total of eleven screws as well as the bottom cover separated from the camera.

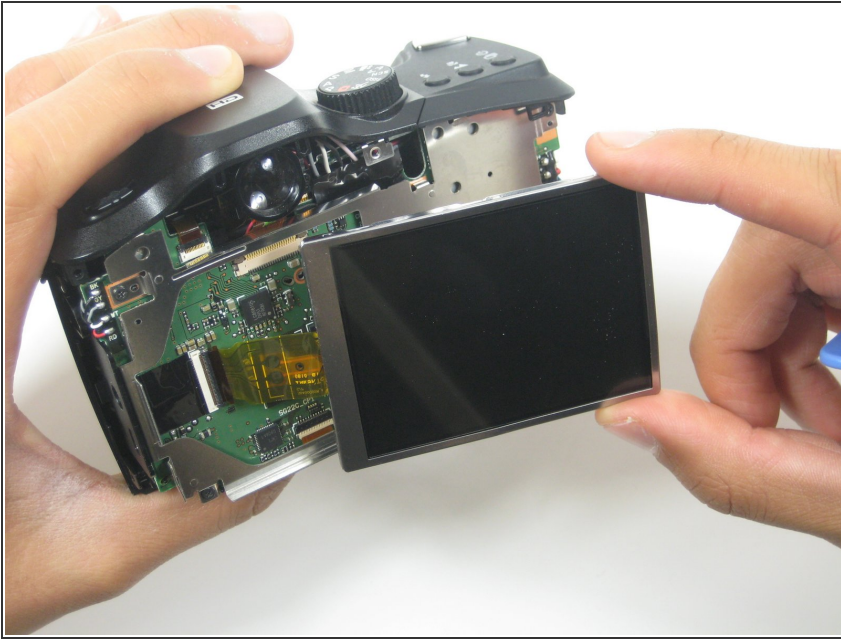
## Step 10 — LCD




- Begin by using Plastic Opening Tools to remove the LCD Screen from it's interior casing. To do this, place the opening tool in between the screen and casing and apply leverage to remove the screen. Do this around the rim of the casing, especially where orange squares appear in the pictures.



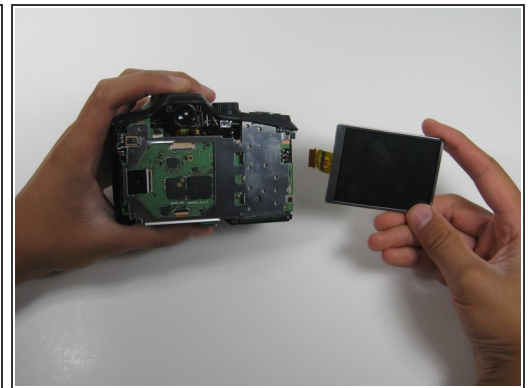
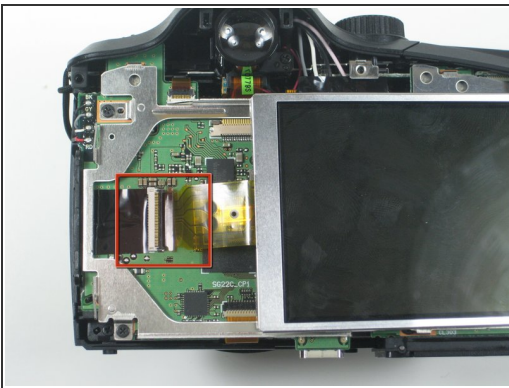
## Step 11



- Gently remove the LCD screen from its interior casing by lifting and pulling from the right side.

 Be incredibly cautious not to pull too hard on the screen, doing so may rip the ribbon that connects the screen to the logic board and permanently damage your camera.

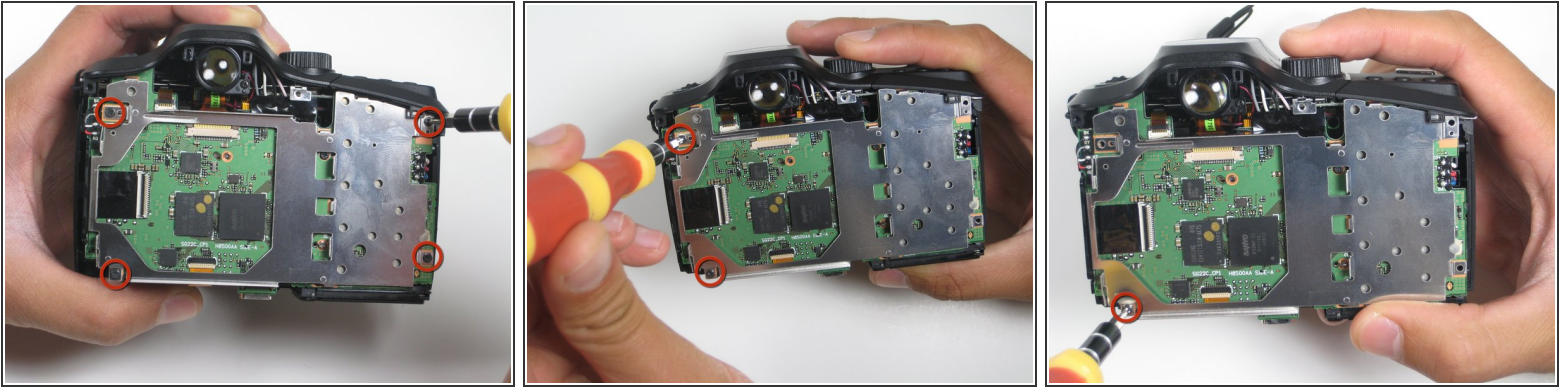
## Step 12



- To completely remove the LCD screen from the interior of the camera, you must unhook the ribbon from the logic board.
- To do this, simply lift up the tab connecting the ribbon to the logic board and pull gently on the LCD screen.

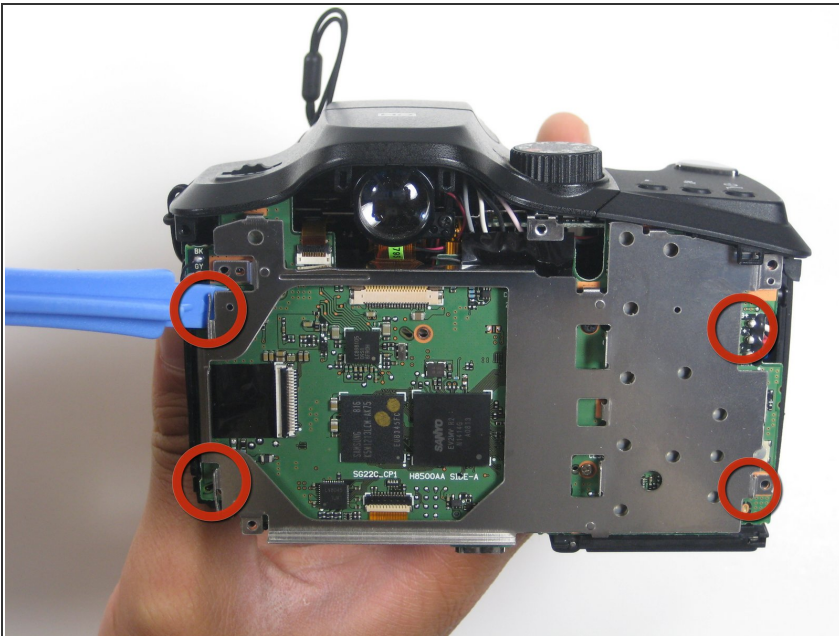


## Step 13 — Internal frame



- Begin by unscrewing all four screws found in each corner of the frame

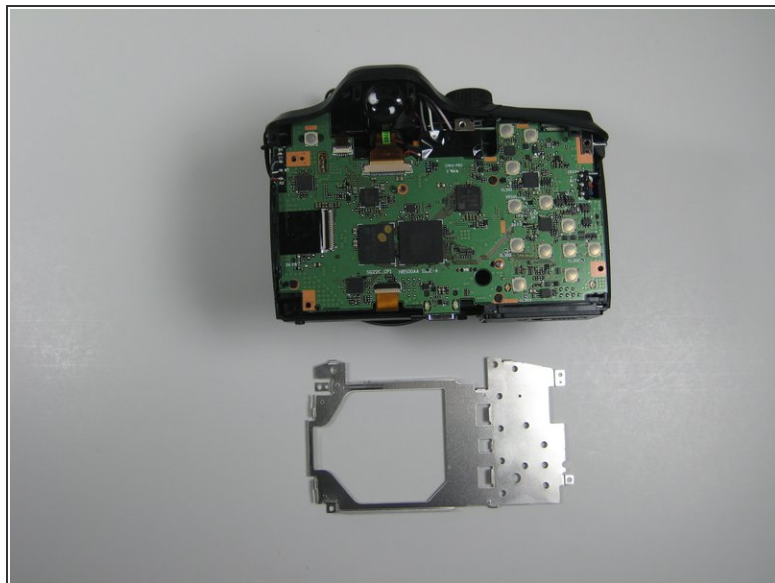
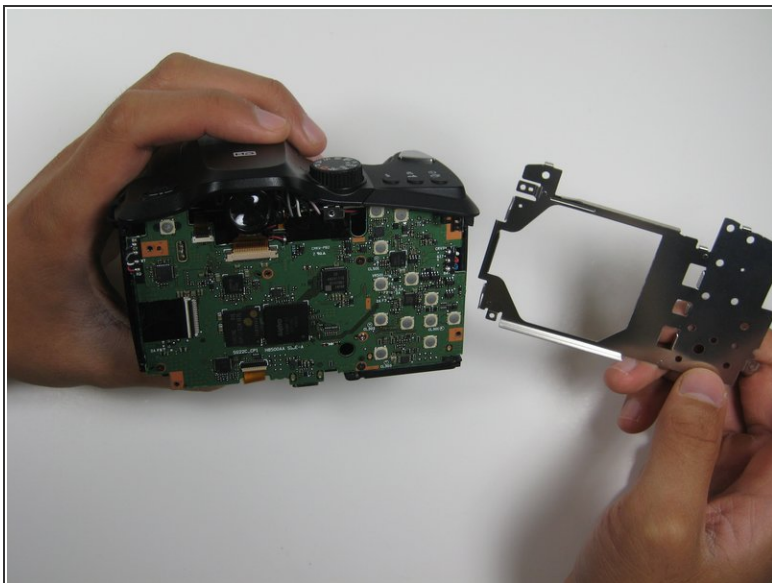
## Step 14



- Next, use Plastic Opening Tools to loosen the frame from the camera. Do this by placing the tool in between the frame and the camera and applying leverage.

⚠ Avoid placing the opening tool in between the frame and camera on the bottom side of the device. There is ribbon there that could easily be damaged if not carefully avoided.

## Step 15



- After loosening the frame with the opening tools, gently remove the frame from the interior of the camera.

To reassemble your device, follow these instructions in reverse order.