



Nokia Lumia 928 Battery Replacement

A battery replacement guide for the Nokia Lumia 928. Steps to disassemble the phone to access and remove the internal battery.

Written By: BurnieG





TOOLS:

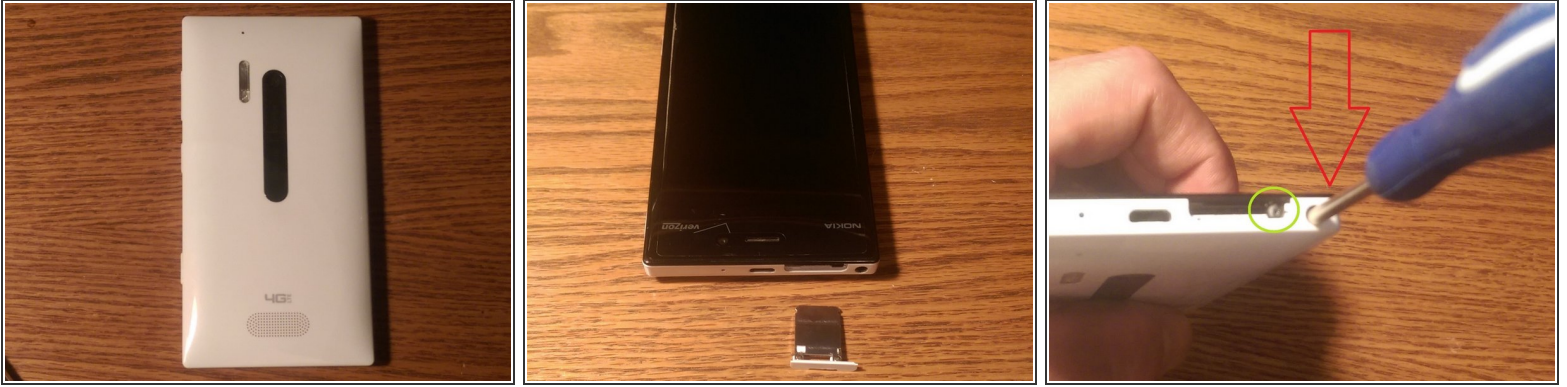
- [T5 Torx Screwdriver](#) (1)
- [iFixit Opening Tools](#) (1)
- [Spudger](#) (1)



PARTS:

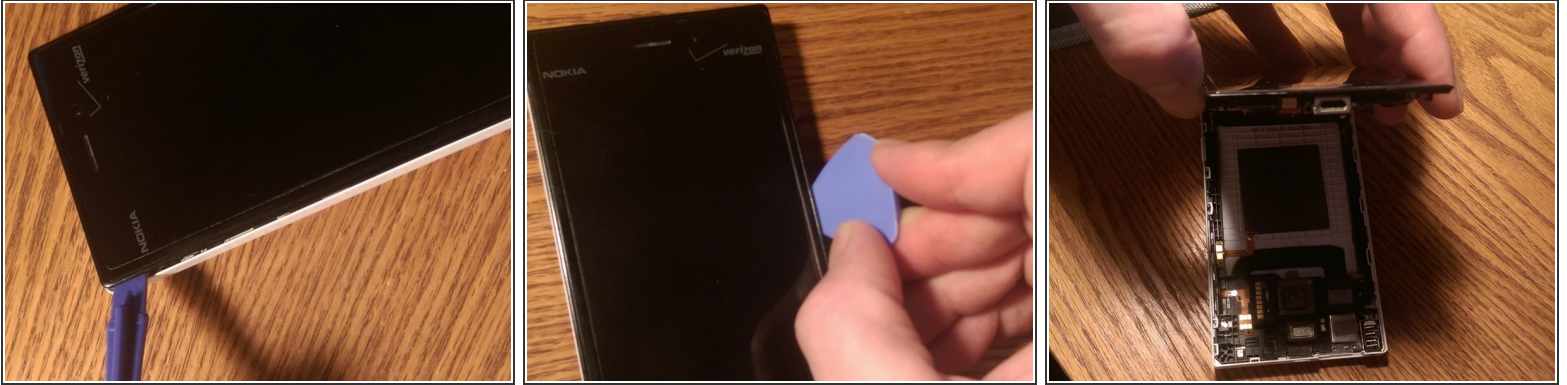
- [Nokia Lumia Replacement Battery](#) (1)

Step 1 — Removing the back case



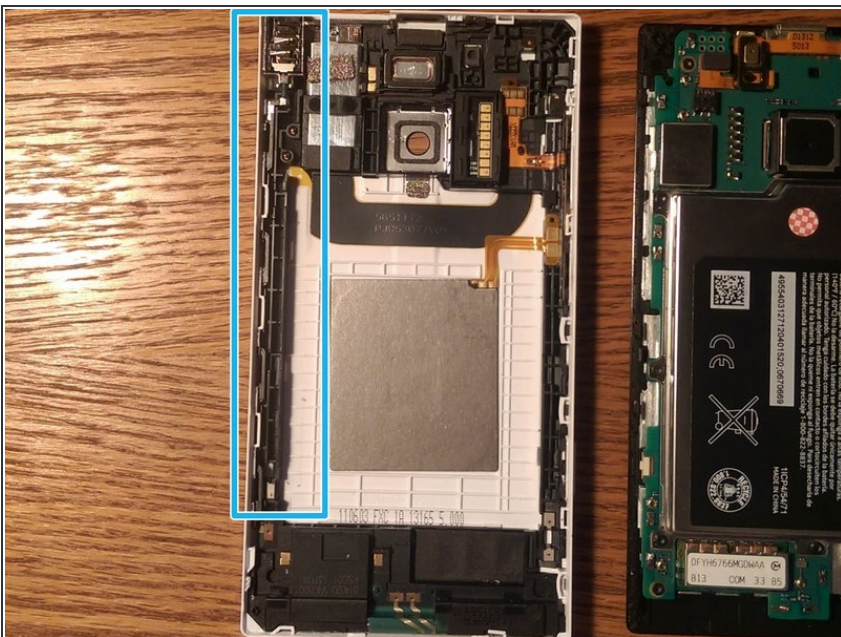
- Start by powering off the phone.
 - Next remove the sim card tray.
 - Once sim tray is removed you can now remove the T5 screw from the sim card slot.
 - Now insert the T5 screwdriver into the headphone jack. There is a T5 screw in the headphone jack that has to be loosened.
- ⚠ The screw in the headphone jack does not come out, so do not try to remove it. Nokia uses a lock bar on this case that locks the plastic clips in place. So the screw in the headphone jack is how you loosen and tighten the lockbar. You will break the back case trying to remove it if you are unaware of the lockbar and do not loosen it first.

Step 2



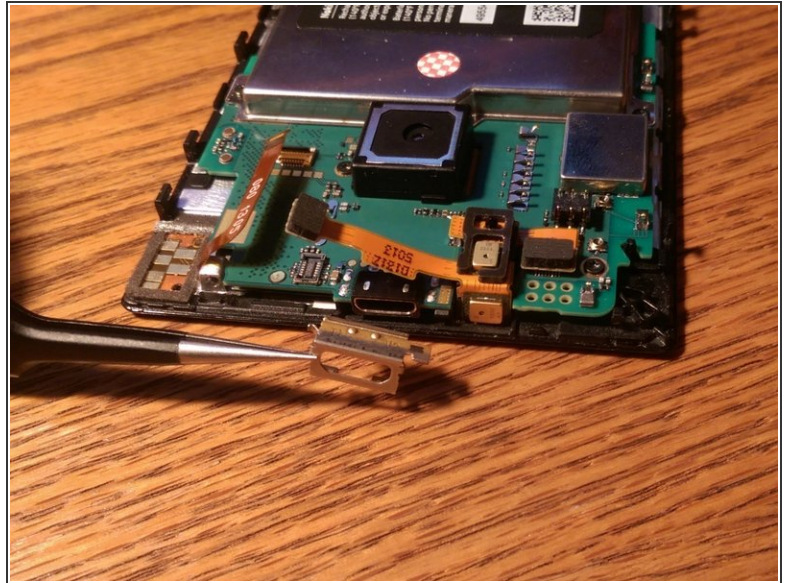
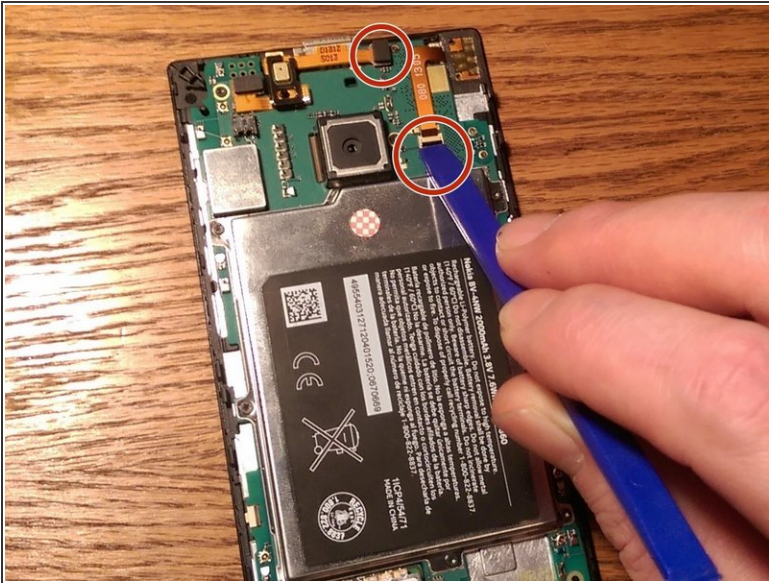
- Now with the lock bar loosened you can begin using your pry tool to free the plastic clips that hold the back case in place.
- ⓘ I find it easiest to start at the top left corner and work down to the bottom left corner. Then move to the top of the device and work your way around and down the right side of the device. I then free up the bottom last. Seems the guitar pick works great to free the plastic clips.
- Once the clips are free you can then pull the back case off.

Step 3



- You have now removed the back case.
- ⓘ To reassemble follow these directions in reverse order.
- ⓘ The area highlighted in blue in the picture is where the lock bar resides.

Step 4 — Start by disconnection ribbon cables.



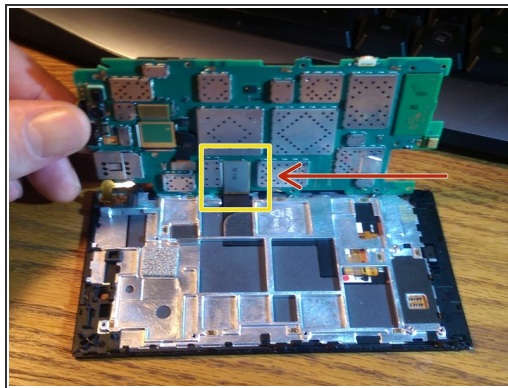
- First free all ribbon cables from their connections on the motherboard.
 - The two areas circled in red are where the ribbon cables connections need to be freed from the logic board.
 - Free the ribbon cables from the logic board with a plastic pry tool.
- Now that the ribbon cable connections are free you will now need to remove a metal clip around the usb port.

Step 5 — Remove T5 screws from motherboard.



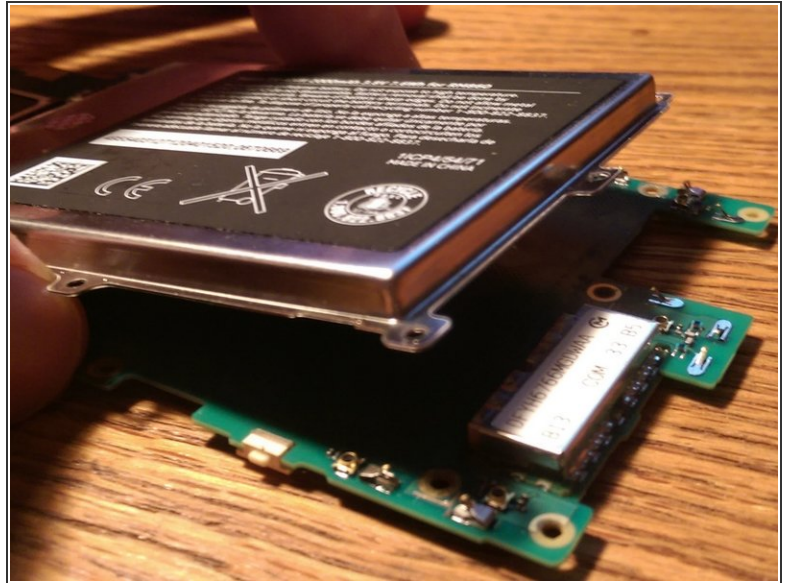
- Now we can begin by removing the 10 T5 screws from the motherboard.
- i* The ten screws appear to be the same size. But to be safe try to keep the screws circled in red and yellow separate.

Step 6 — Time to remove the motherboard.



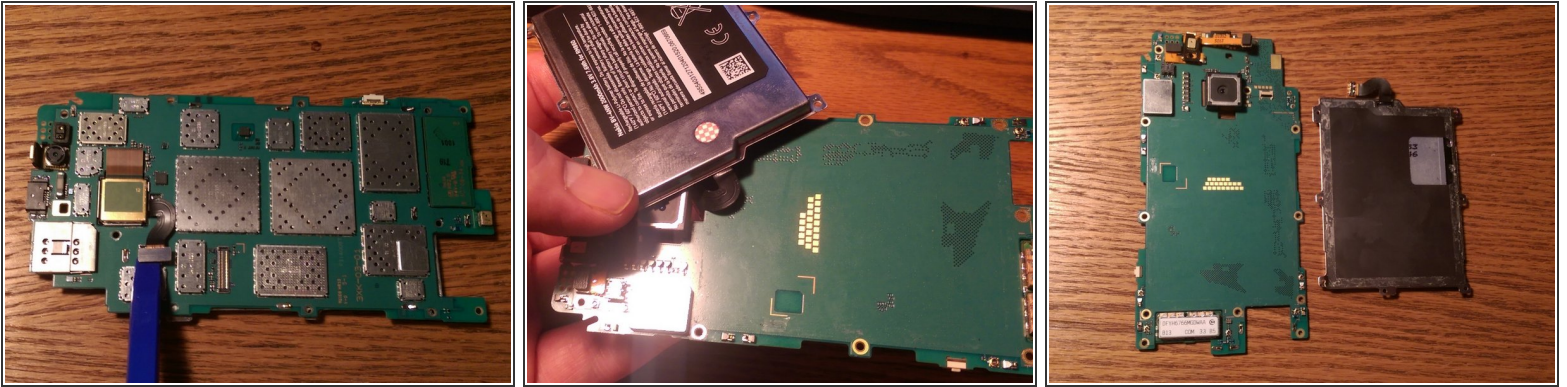
- With all ten T5 screws removed we can now lift from the left side of the motherboard. that needs freed
- The area in yellow is the only connection on the underside of the motherboard that needs to be freed up. This is the display connection.
 - Pry the connection loose from the motherboard with a plastic pry tool.
- Now you can remove the motherboard.

Step 7 — Battery removal



- i With the motherboard removed you now have access to the battery's connection to the motherboard.
- The battery is also adhered to the motherboard. So you will want to use a plastic spudger or similar tool to pry the battery from the motherboard.
- ⚠ Please use a plastic tool to pry the battery up rather than a metal tool. Just to be safe.
- i I did not have to apply any heat to loosen the adhesive under the battery. I did use some needle tip tweezers to get under a lip where a screw belongs, just high enough so I could get my plastic spudger under the battery.
- Then work your way around the battery to free it from the adhesive. **Beware** that the ribbon cable is located near the camera so be careful when you get to that area.

Step 8



- Once the battery is loosened from the adhesive on the motherboard you can now flip the motherboard over to release the battery connection from the motherboard.
- ⚠ Make sure to hold the battery in place while doing this so you don't damage anything on the motherboard.
- Free the battery connection with a plastic pry tool.
- Now we can remove the battery from the motherboard.
 - ⓘ The battery's ribbon cable can be a little tricky to get through the hole in the motherboard.
- Now the replacement battery can be installed and you can follow these directions in reverse order to reassemble the phone.

To reassemble your device, follow these instructions in reverse order.