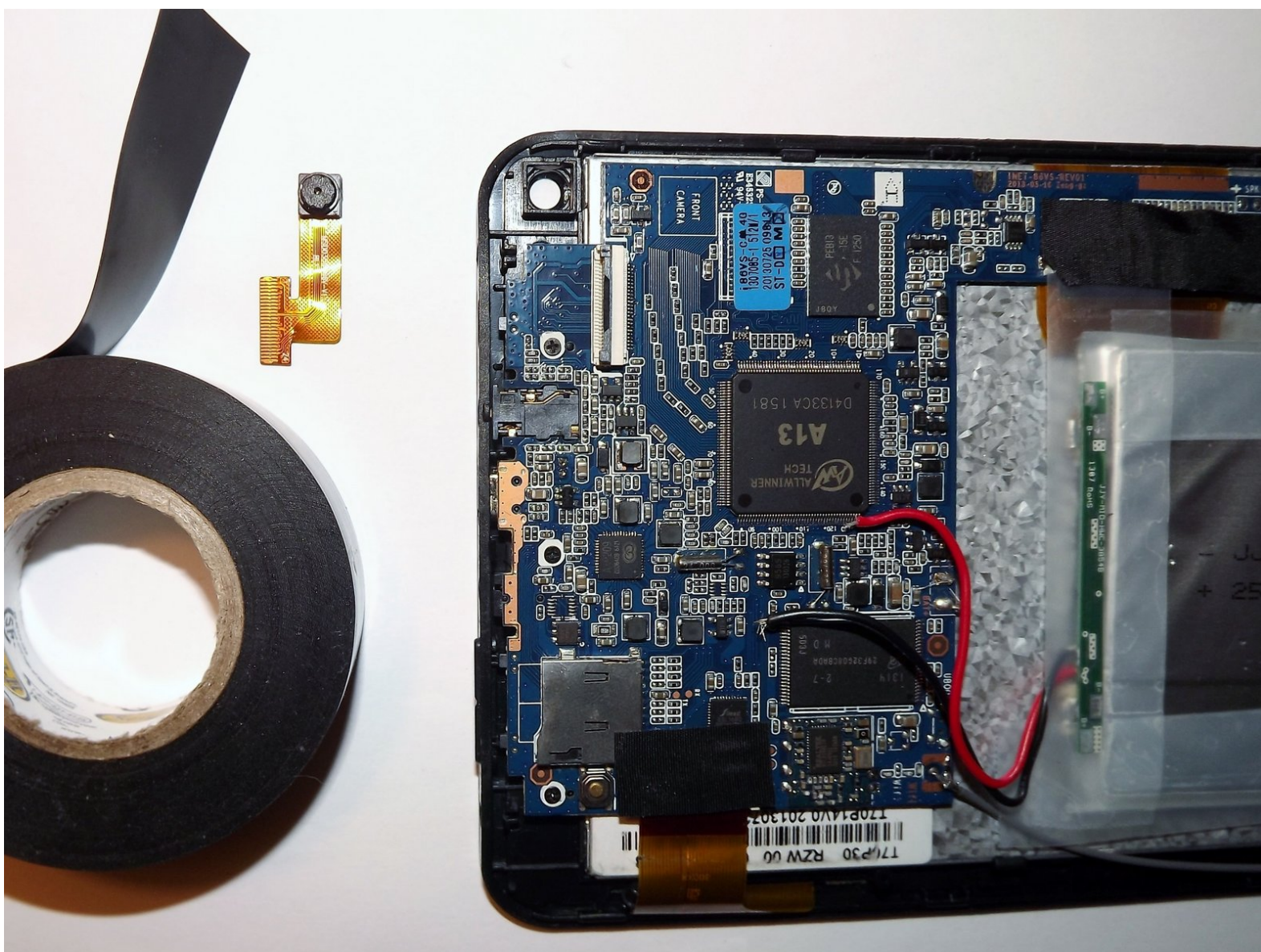




# Apex Tablet 7 Camera Replacement

This guide explains how to remove the camera for the Apex Tablet 7. Installing the new camera is done by doing the steps in reverse.

Written By: Steven Gutzwiller



# INTRODUCTION

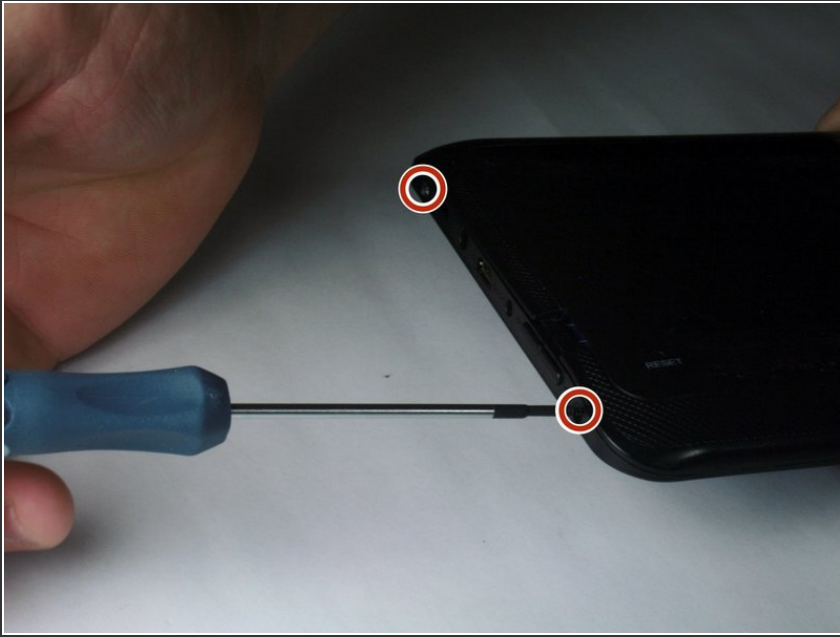
This guide explains how to replace the camera for the Apex Tablet 7. Use this guide if your tablet has a damaged or malfunctioning camera. You should have a replacement camera and be prepared to remove your old camera.

---

## TOOLS:

- [iFixit Opening Tools](#) (1)
  - [Phillips #00 Screwdriver](#) (1)
-

## Step 1 — Back Panel



- Unscrew the two 2.70 mm Phillips #00 screws on the side of the tablet that has the buttons and the headphone jack (bottom side when holding upright).

## Step 2



**⚠ CAUTION:** When removing the back panel of the tablet, take caution around the speaker. This is located in the lower right corner when looking at the back of the tablet. There are two wires inside connecting the tablet back panel to the device itself and this connection may be severed if the back is pulled off without care.

- This connection is shown in red on the pictures.



### Step 3



- Slide a plastic opening tool in between the edge of the back panel and the the top edge of the device.
- Run the plastic opening tool along the sides of the tablet while keeping it in the crack between the tablet and the back panel to create an opening.

### Step 4



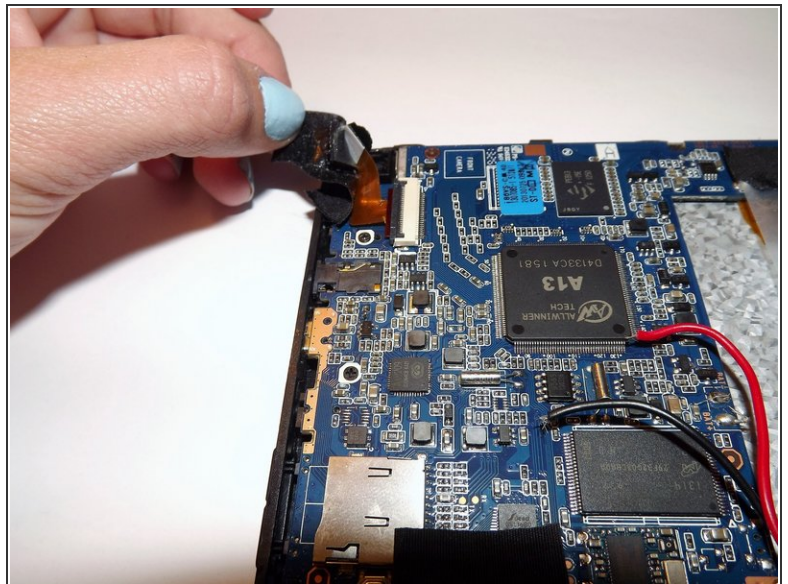
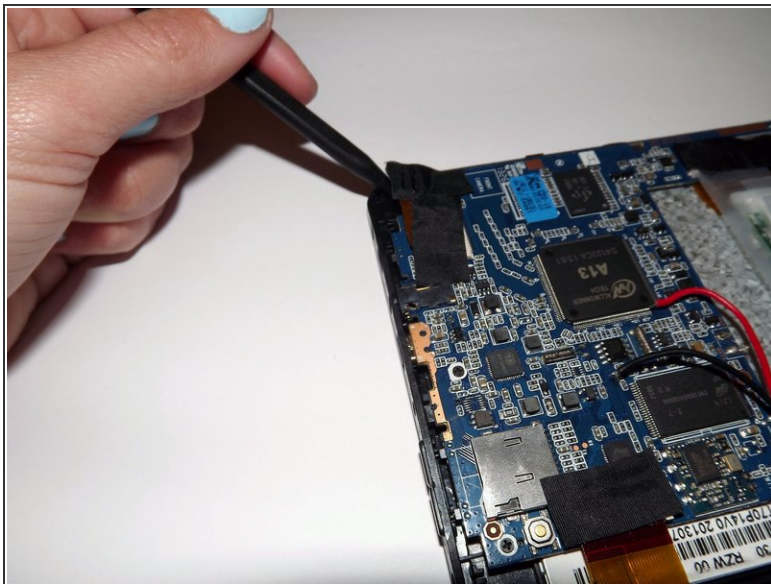
- Apply pressure using your hand to pop the back panel off slowly, taking extra care around the speaker connection.

## Step 5



- The back panel should now be disconnected from the device. This provides access to the components of the device for repairing and replacing parts of the tablet.

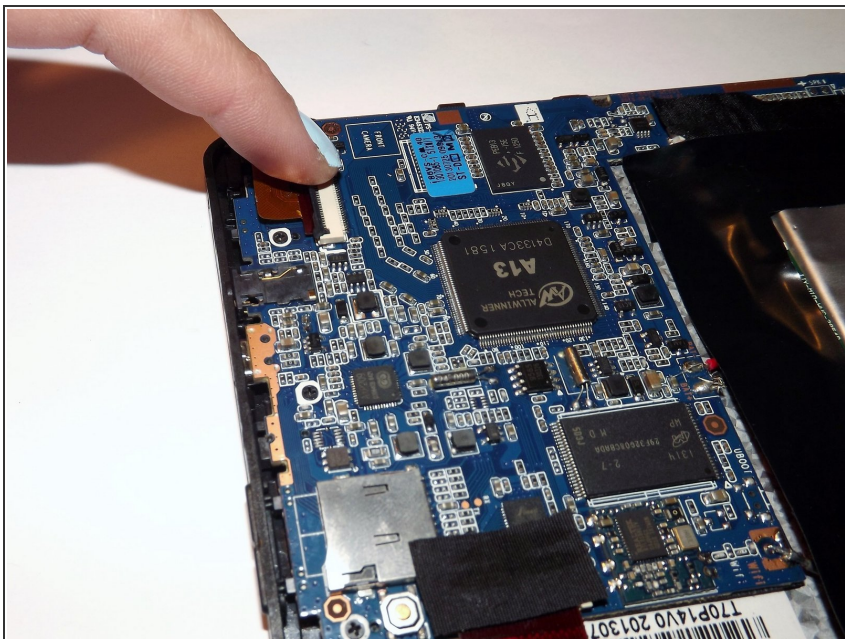
## Step 6 — Camera



- Gently remove the black tape covering the camera and circuit board. The tape will be connected to a foamy block on the back of the actual camera component.

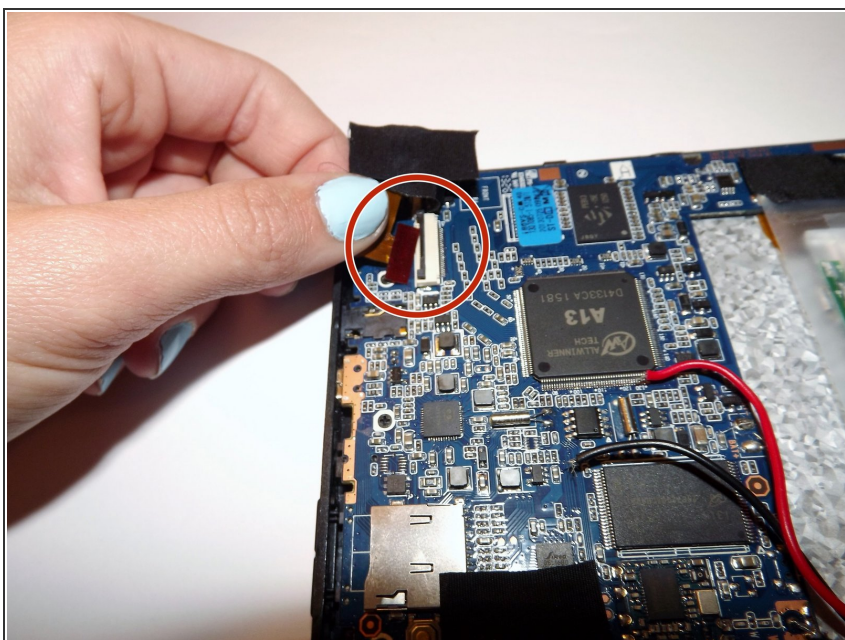


## Step 7



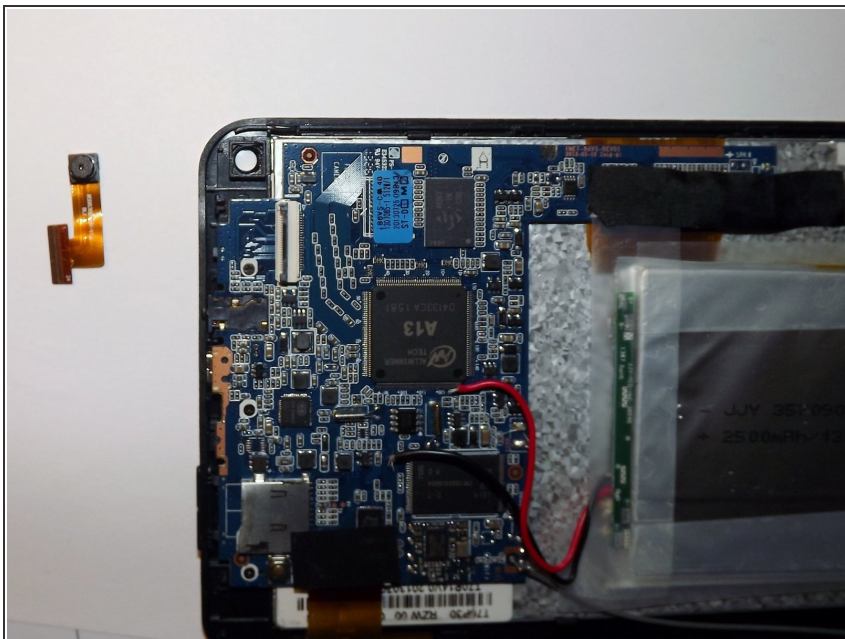
- Flip the black latch over the gold cable to the upright position in order to release the cable.

## Step 8



- Carefully remove the cable from the circuit by pulling it straight out.

## Step 9



- Pull out the camera. There should not be any more connections holding it in place.
- Reconnect the replacement camera.

To place the new part and reassemble your device, follow these instructions in reverse order.