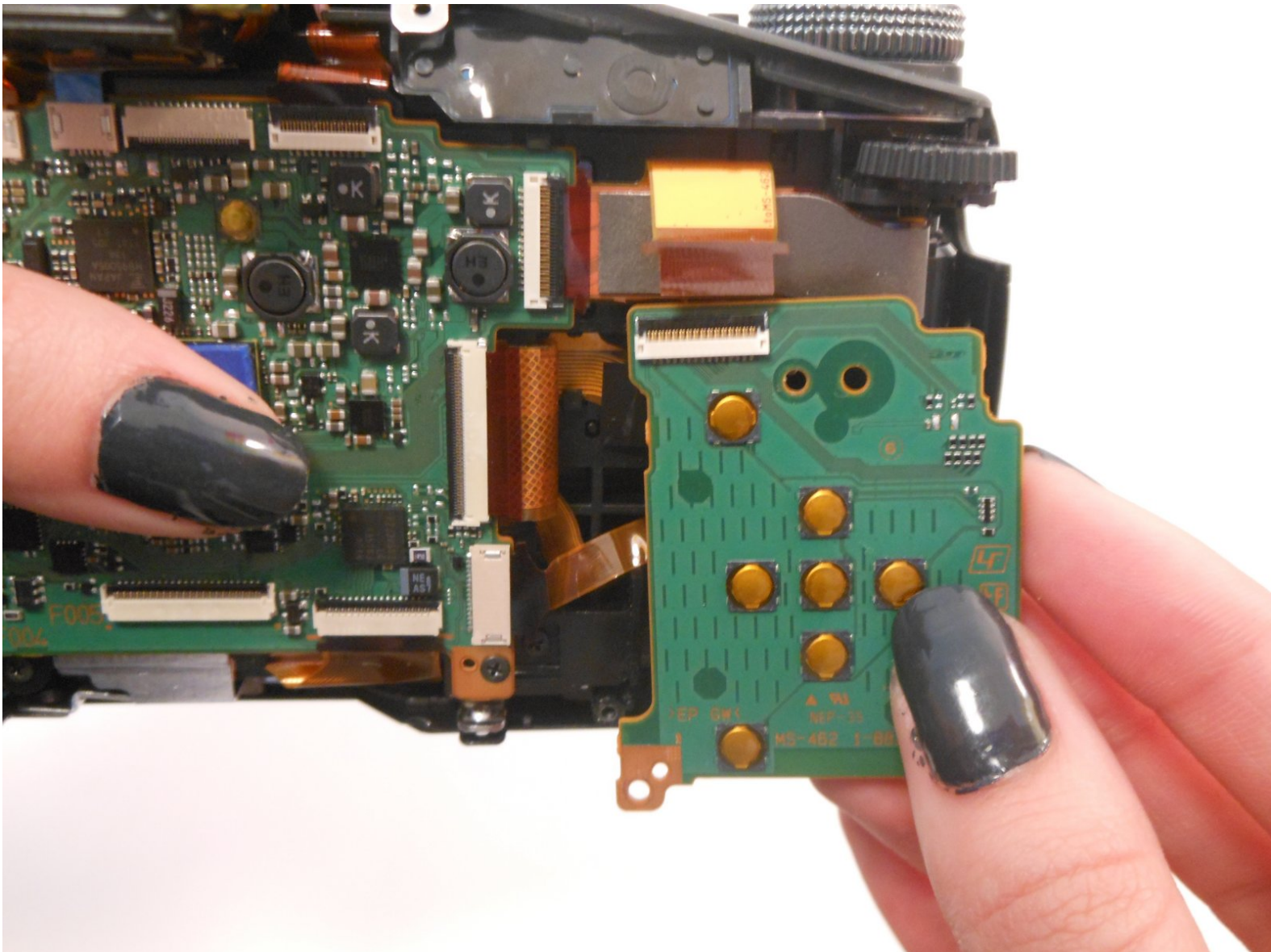




Sony Cybershot DSC-HX100V Control Button Sensory Panel Replacement

This guide will show you how to replace the sensory panel containing the control button, menu button, delete button, and memory card slot.

Written By: Sydney Counts



INTRODUCTION

If your camera won't respond when you press the menu button, delete button, or control wheel, use this guide to replace the internal sensory panel.

TOOLS:

- [Spudger](#) (1)
 - [Phillips #00 Screwdriver](#) (1)
-

Step 1 — Control Button Sensory Panel



- **Make sure the camera is turned off.**
 - Press the ON/OFF button to turn off the camera.
- ⚠ WARNING:** Data may be lost if the camera remains on.

Step 2



i Use the Phillips screwdriver size #00 to remove the 1.9mm #00 screws.

- Remove 2 screws on the side of the camera.
- Remove 4 screws on the bottom of the camera.
- Remove 1 screw next to the eyepiece.

Step 3



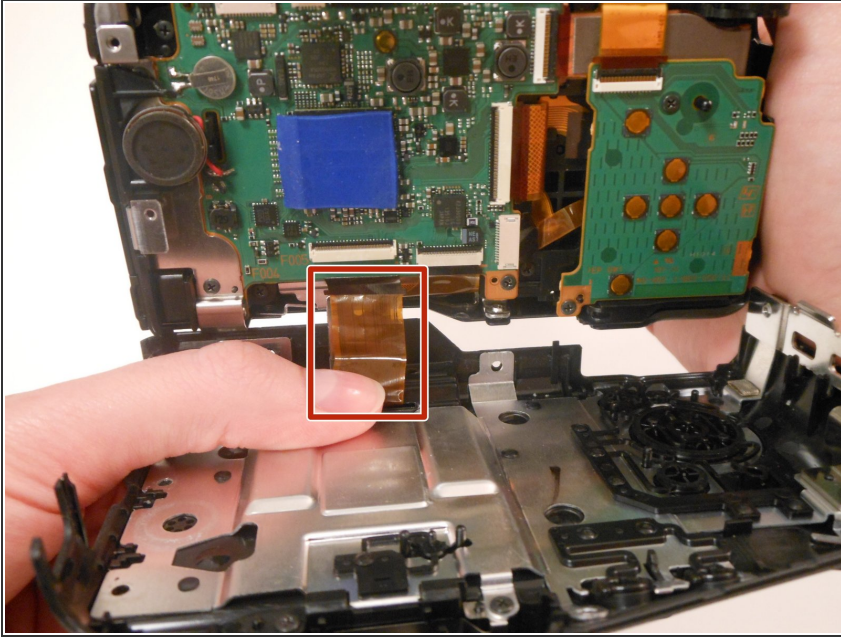
- Tilt the screen forward.
- Remove the two 1.9mm #00 screws on the left with the Phillips #00 screwdriver.

Step 4



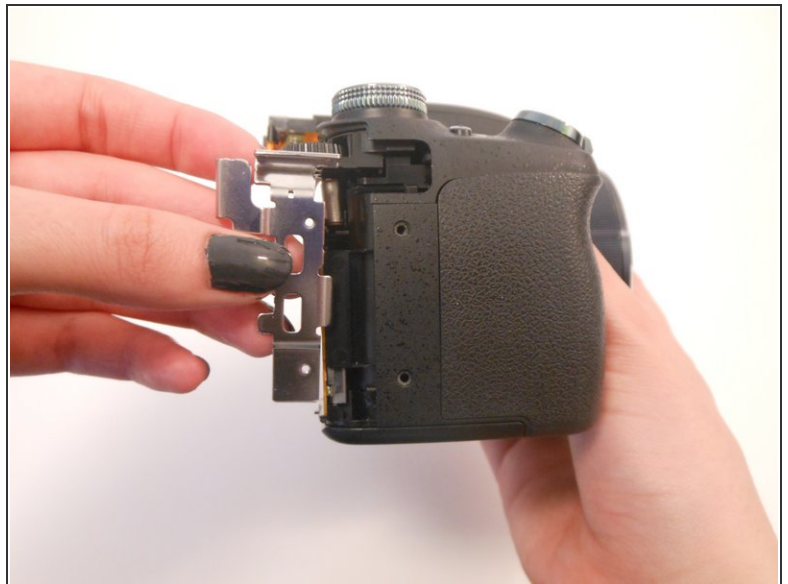
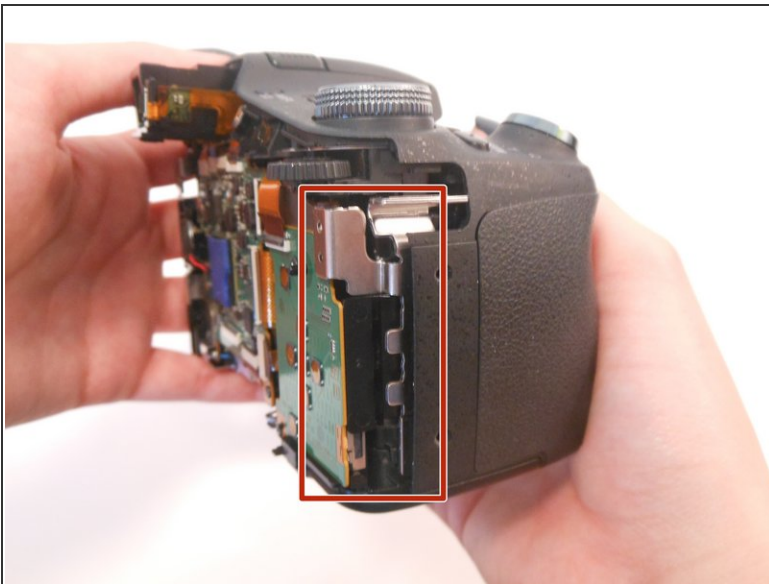
- Pull the back part of the camera upward.
- ⓘ Use the spudger to help pry open the back panel.

Step 5



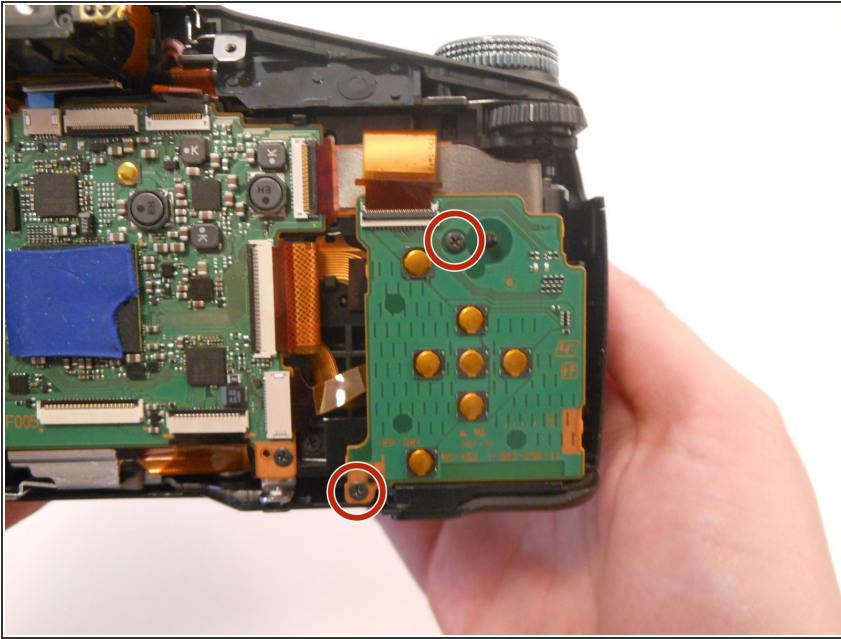
- Open the back panel to view the inside of the camera.
- Gently pull the orange ribbon cable to separate the two parts of the camera.
- ☑ Set the back part of the camera aside.

Step 6



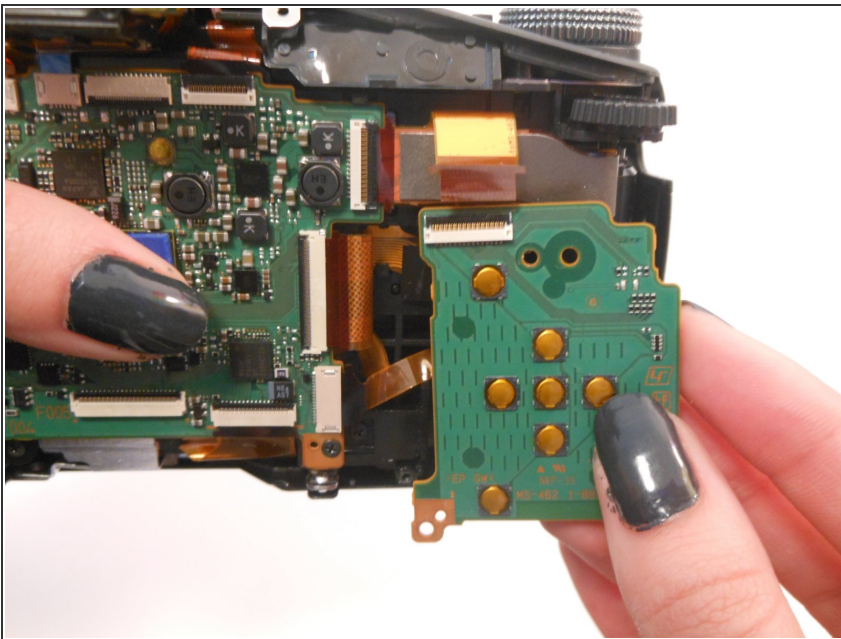
- Turn the front part of the camera clockwise, so the lens is facing the right.
- Gently remove the silver piece from the side of the camera. It should come out easily using your fingers.

Step 7



- Remove two 3.38mm #00 screws from the sensory panel with a Phillips screwdriver size #00.
- The first screw is located on the left side of the panel and the second screw is located near the top of the panel.

Step 8



- Gently lift the orange ribbon cable with your finger to disconnect it.
- Remove the sensory panel and replace it.

To reassemble your device, follow these instructions in reverse order.