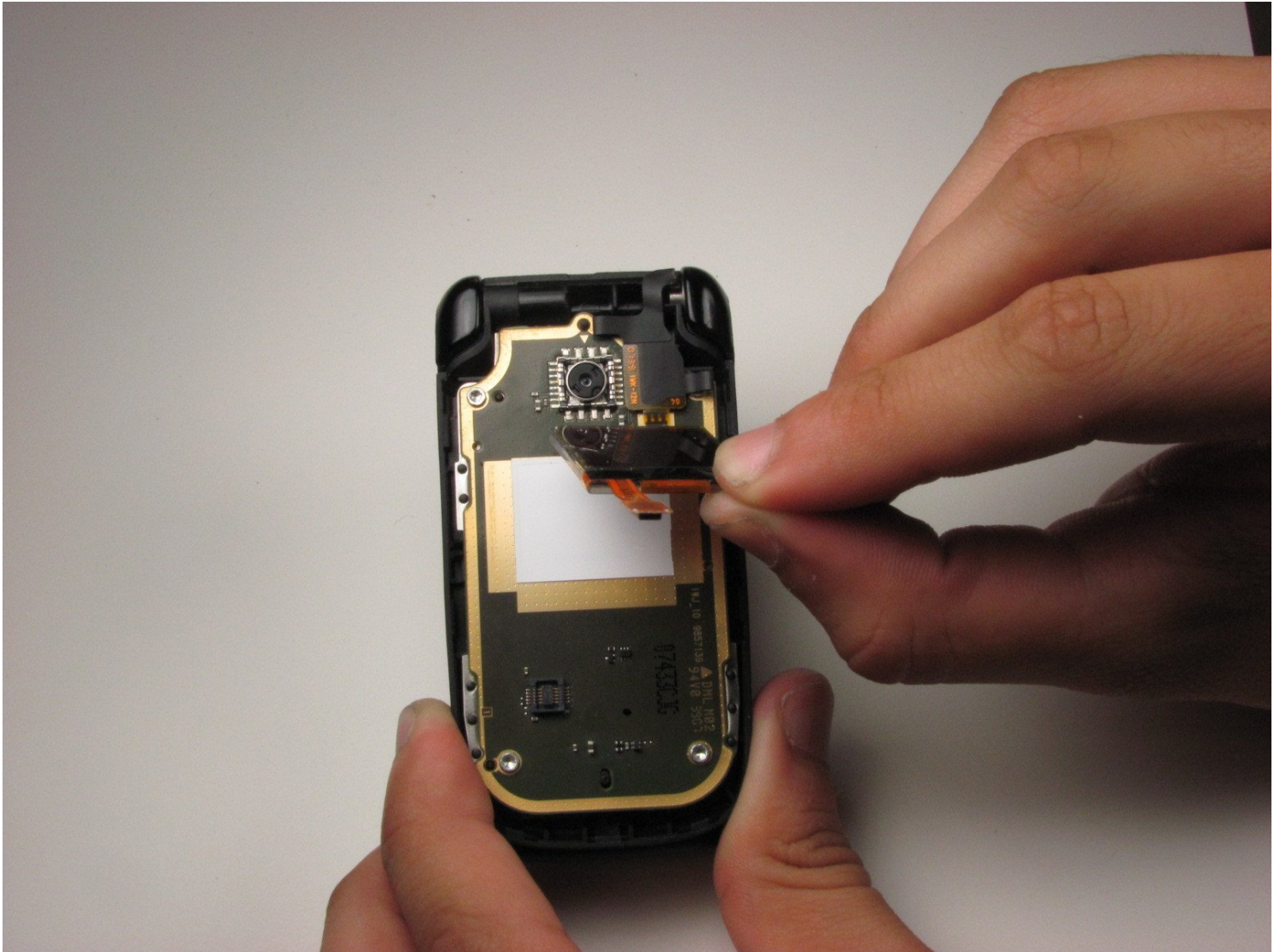




# Nokia 6085h Front LCD Display

Use this guide to replace a damaged front LCD...

Written By: Brett Balcer



# INTRODUCTION

Use this guide to replace a damaged front LCD display on your Nokia 6085H.

The front LCD display is the screen that displays the images of your phone. When an LCD display is damaged or broken, the screen may have a blank white or blue screen. If your screen has been cracked, it may display a white or blue screen with black lines running across. Before starting this guide, check out the Nokia 6085H [troubleshooting page](#).

If replacement of the front LCD display does not restore your screen, this may indicate an issue with the inner LCD display.

---

## TOOLS:

[iFixit Opening Tool](#) (1)

[T6 Torx Screwdriver](#) (1)

---

## Step 1 — Battery



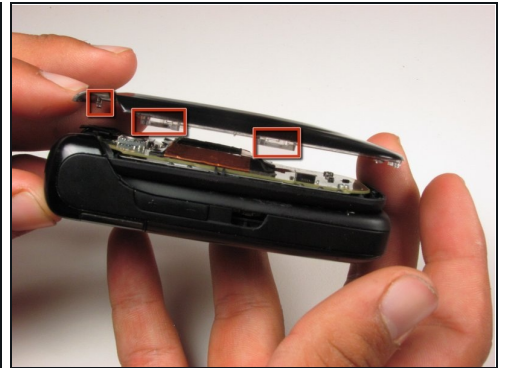
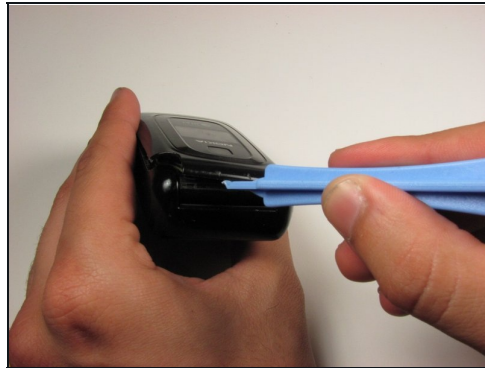
- Flip over the phone so that the back is facing up.
- Pressing your thumb against the back cover, slide the cover off of the phone.

## Step 2



- Remove the phone's battery.

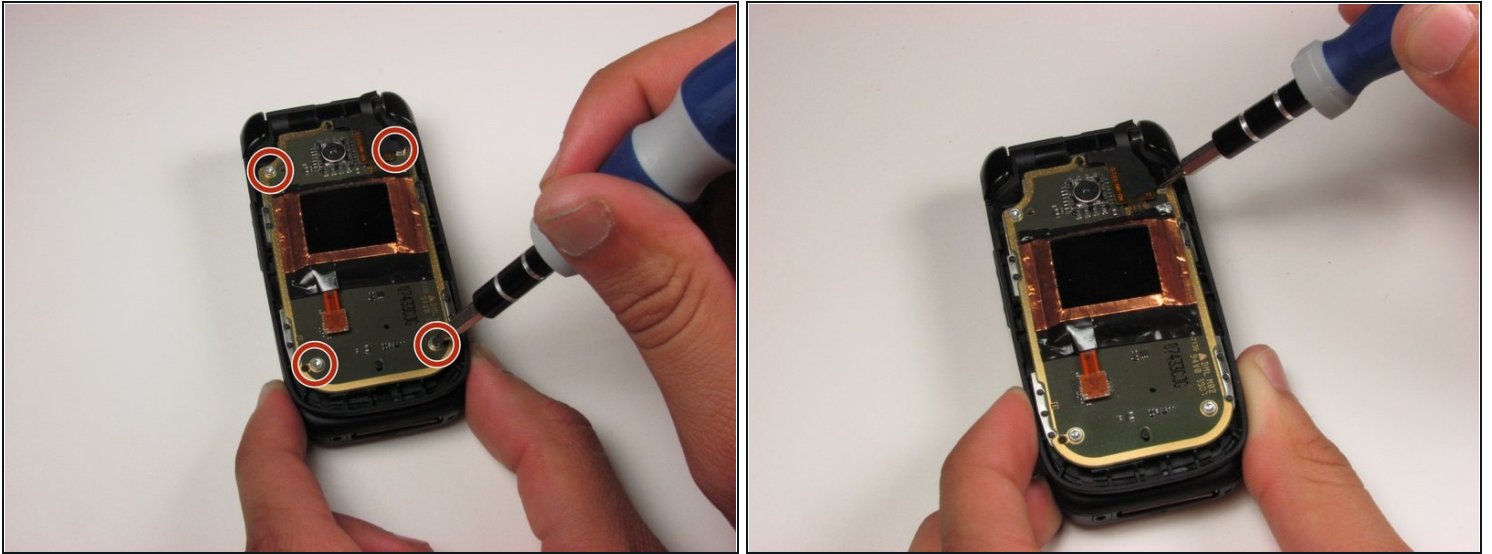
## Step 3 — Front LCD Display



- With the phone closed, run a plastic opening tool along the seam of the top half of the phone.
  - Make sure to disconnect each of the five clips before proceeding to the next step.
- ⓘ There are two clips on each side of the phone and one on the top.



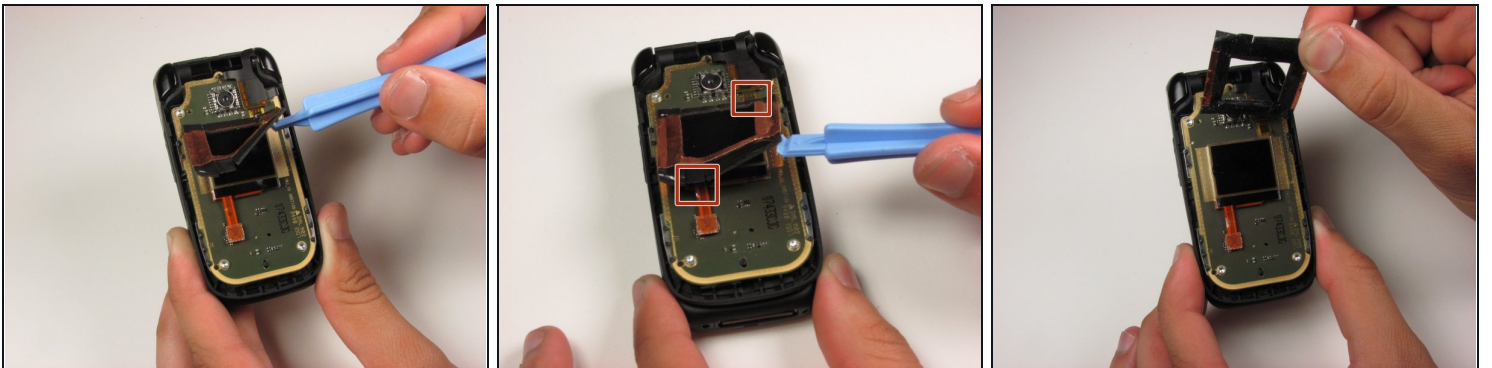
## Step 4



- Remove the four 3.2 mm screws from the front panel using a T6 Torx screwdriver.

ⓘ The fourth screw is located under a fold in the ribbon cable.

## Step 5

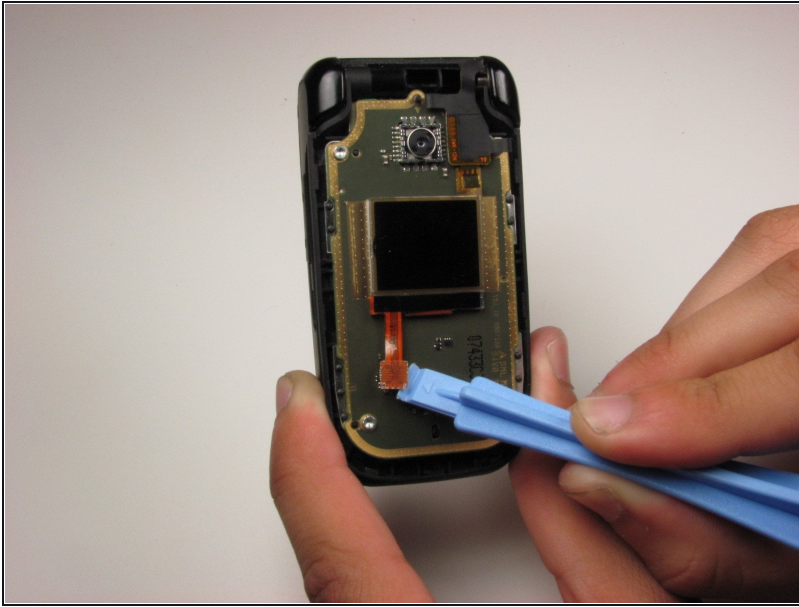


- Starting in the lower right corner, slowly begin to lift the tape that is holding down the front LCD and cables.

⚠ Be careful around the two ribbon cables attached to the tape. These cables are fragile.

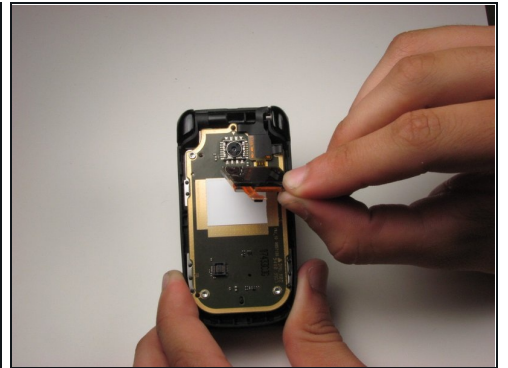
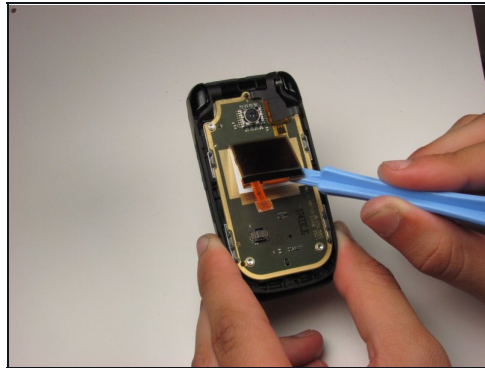
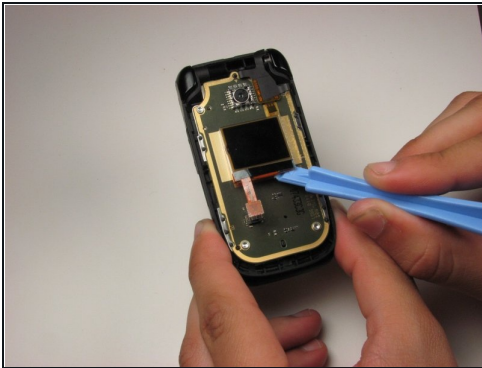
- Lift the tape from the board.

## Step 6



- Using a plastic opening tool, lift the ribbon cable connection below the front LCD.

## Step 7



- Using a plastic opening tool, slowly pry the LCD display from the bottom, releasing it from the glue that is holding it to the board.

---

To reassemble your device, follow these instructions in reverse order.