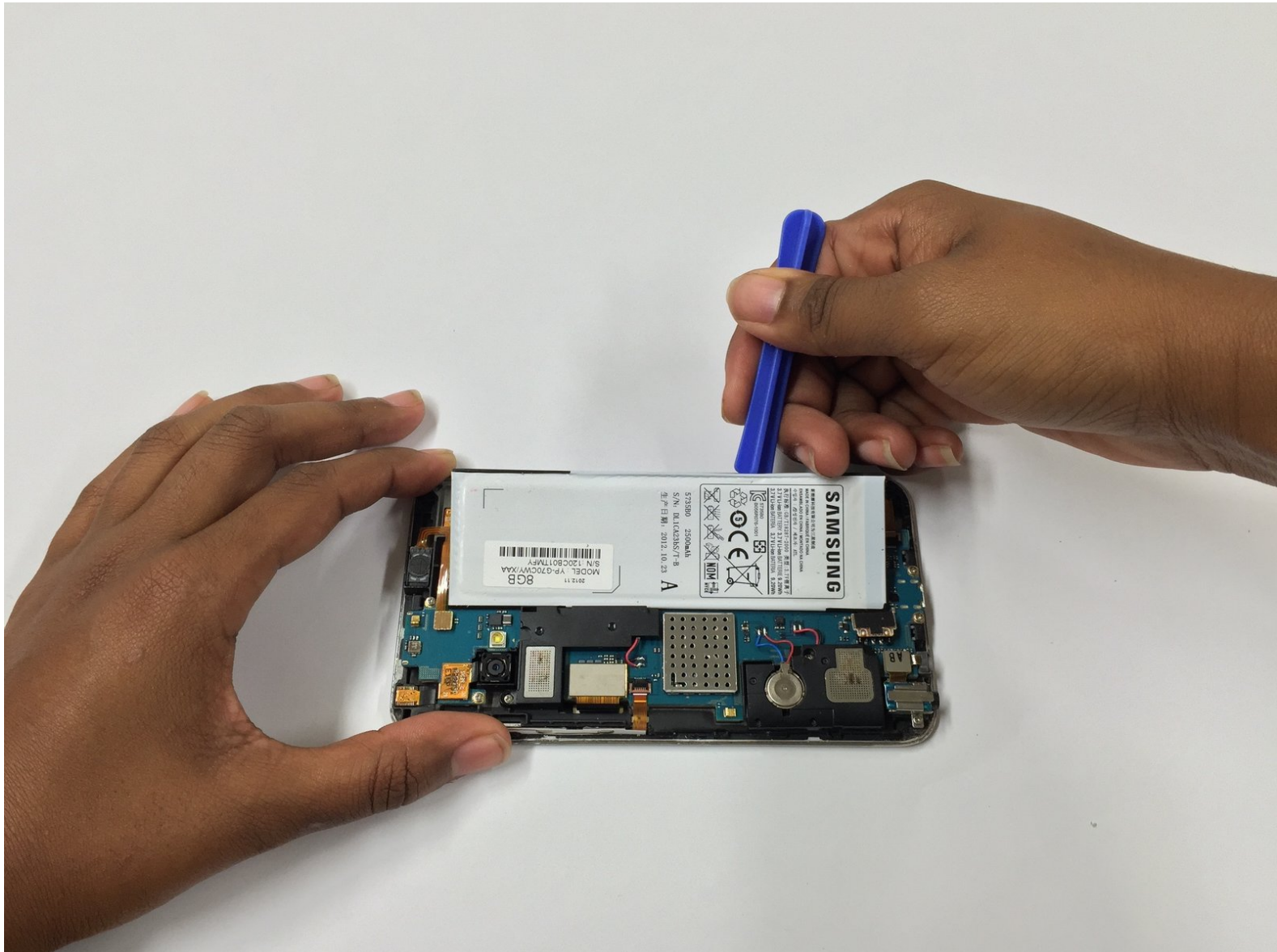




Samsung Galaxy Player 5.0 Battery Replacement

How to replace the battery on the Samsung Galaxy Media Player 5.

Written By: China Ayala





TOOLS:

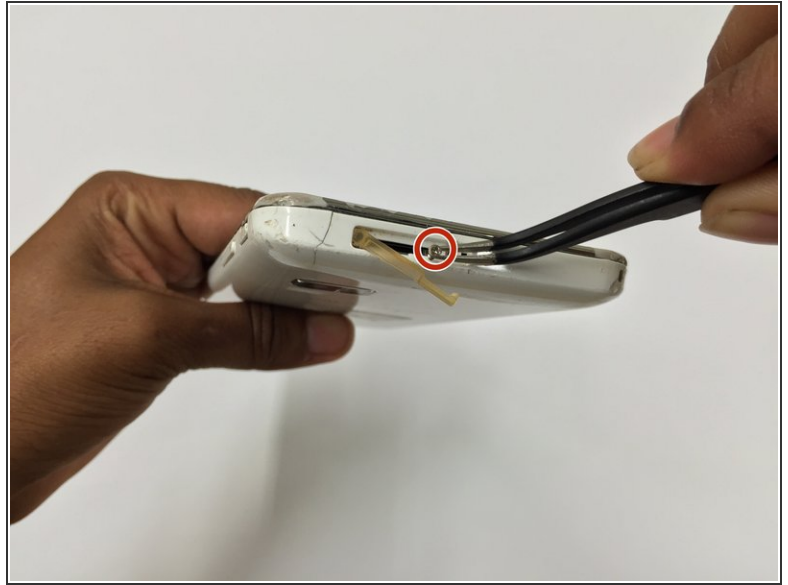
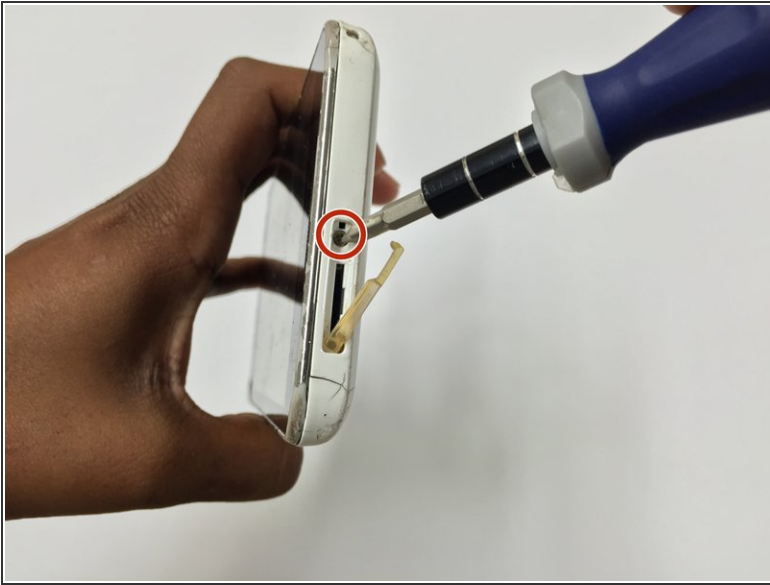
- [Tweezers](#) (1)
- [Phillips #0 Screwdriver](#) (1)
- [iFixit Opening Tools](#) (1)
- [iFixit Opening Picks set of 6](#) (1)



PARTS:

- [Samsung Galaxy Player 5.0 Battery](#) (1)
- [Galaxy Player 5.0 Rear Panel](#) (1)

Step 1 — Battery



- Remove the SD Memory Card before taking the device apart. Using the screwdriver, remove the 10mm Phillips screw that is near the SD Memory Card port.

Step 2



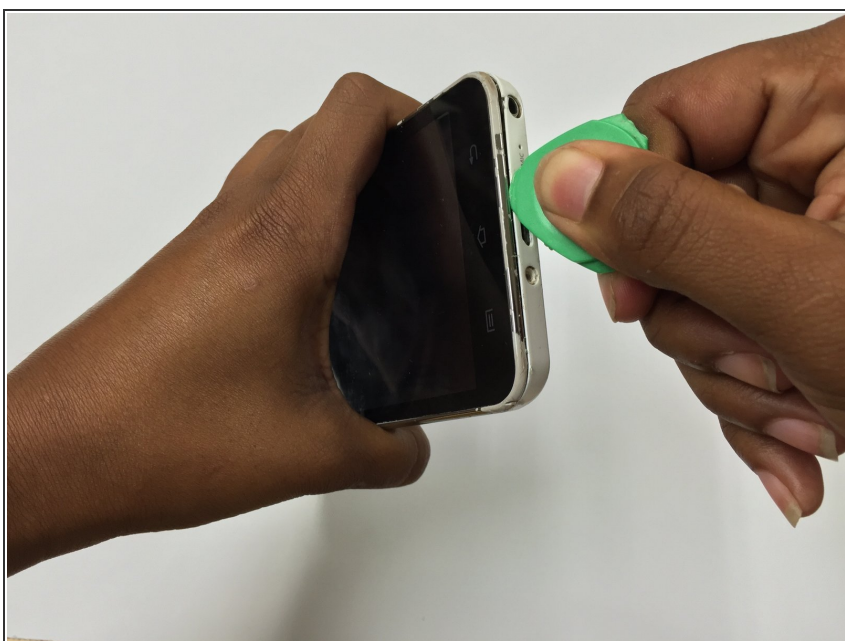
- Remove the white caps, which are covering the screws that are located on either side of the charging port.
- ⓘ You may have to use a low heat blow dryer for 5 to 10 seconds, or other equivalent heat source to loosen the adhesive.

Step 3



- Continue to unscrew the two 10mm Phillips Screws from the bottom of the device.

Step 4



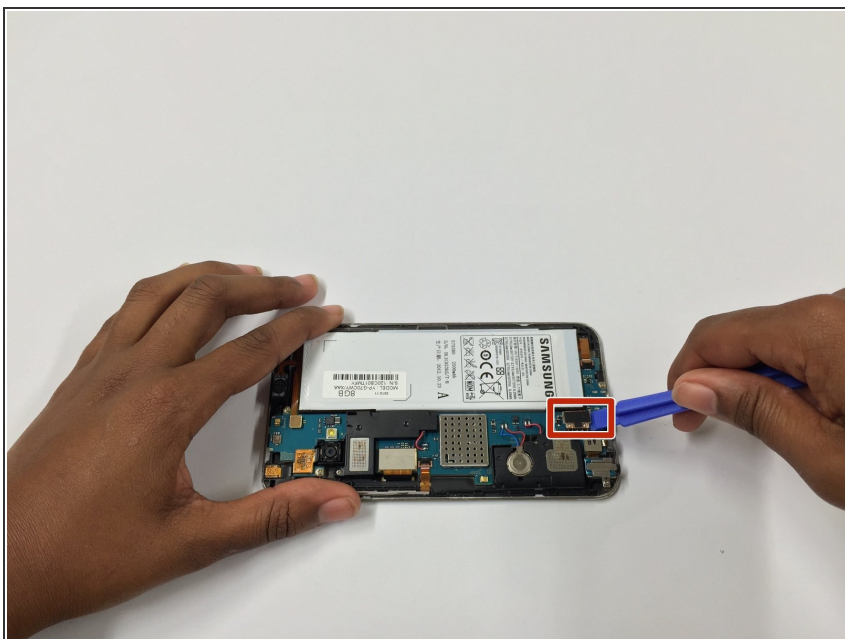
- Starting from the bottom and working around, use the prying tool to separate the front cover housing from the back cover housing.
- ⓘ You will hear a popping sound, indicating the separation.

Step 5



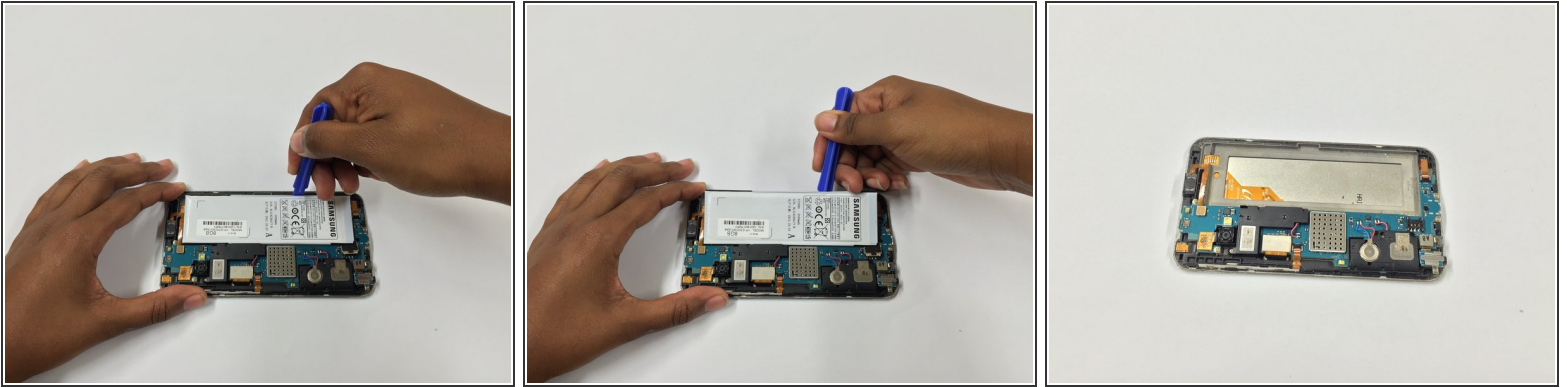
- Take the back housing cover off of the device.

Step 6



- Using the prying tool, remove the tab that attaches the battery to the motherboard.

Step 7



- Then remove the battery, using the prying tool in an upward motion.

ⓘ There is an adhesive behind the battery but it is not strong.

Step 8



- Insert the new battery into its position, and reconnect its tab onto the motherboard.

Step 9



- Now put the rear housing cover on the device, starting from its bottom side, and snap the edges all the way around to close the device.

Step 10



- Lastly, reinsert the screws at the bottom of the device, as well as the screw beside the SD Memory Card port.