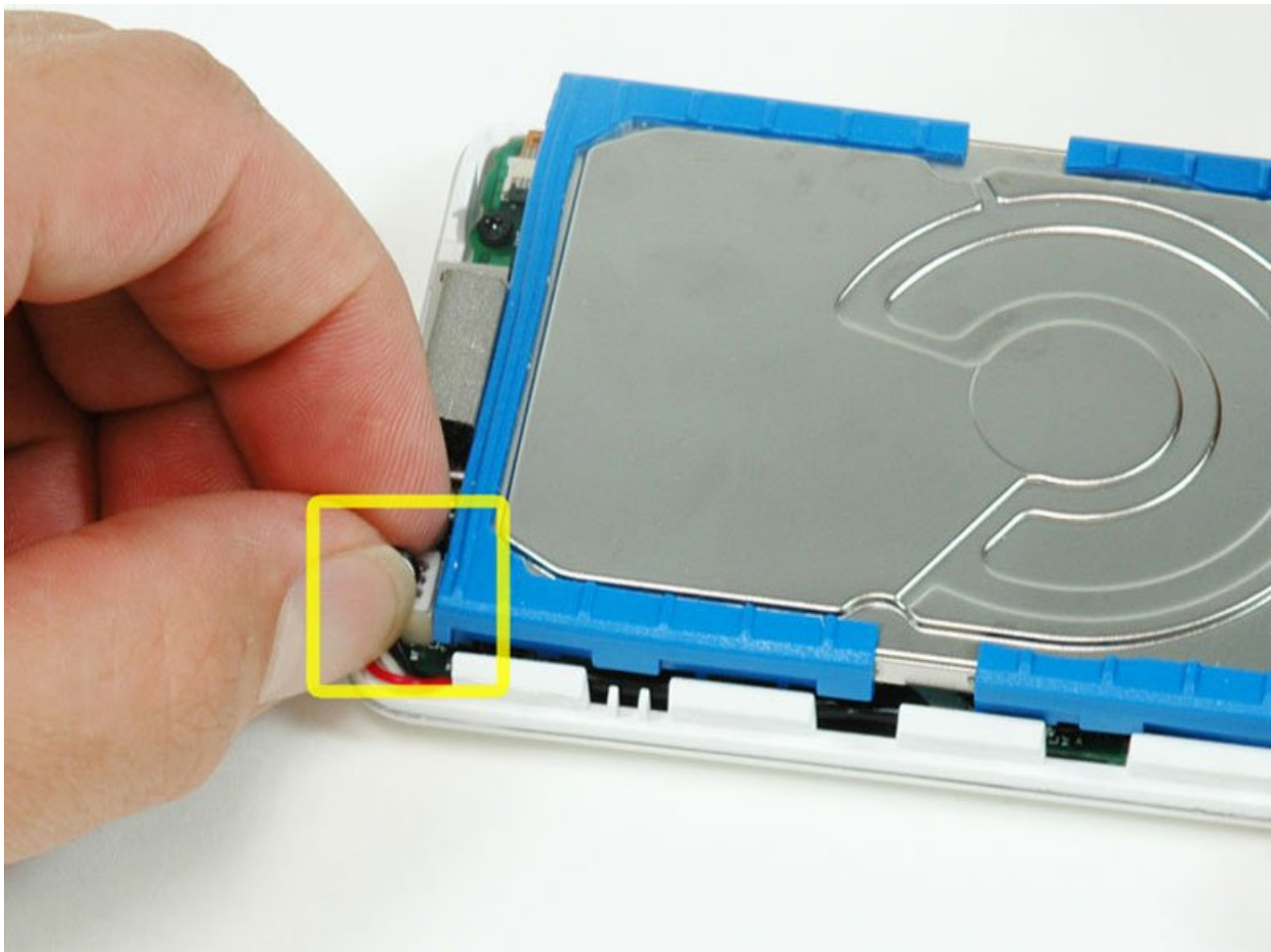




iPod 4th Generation or Photo Battery Replacement

Written By: iRobot



INTRODUCTION

Battery not lasting long? Swap it out.



TOOLS:

- [iFixit Opening Tools](#) (1)
- [Spudger](#) (1)
- [T6 Torx Screwdriver](#) (1)



PARTS:

- [iPod 4G/Photo Replacement Battery](#) (1)
Part Only
- [iPod 4G/Photo Replacement Battery](#) (1)
Fix Kit

This contains the part and tools needed.

Step 1 — Rear Panel



- i** Before opening your iPod, ensure that the hold switch is in the locked position. The orange bar should be visible, indicating hold is active.

Step 2



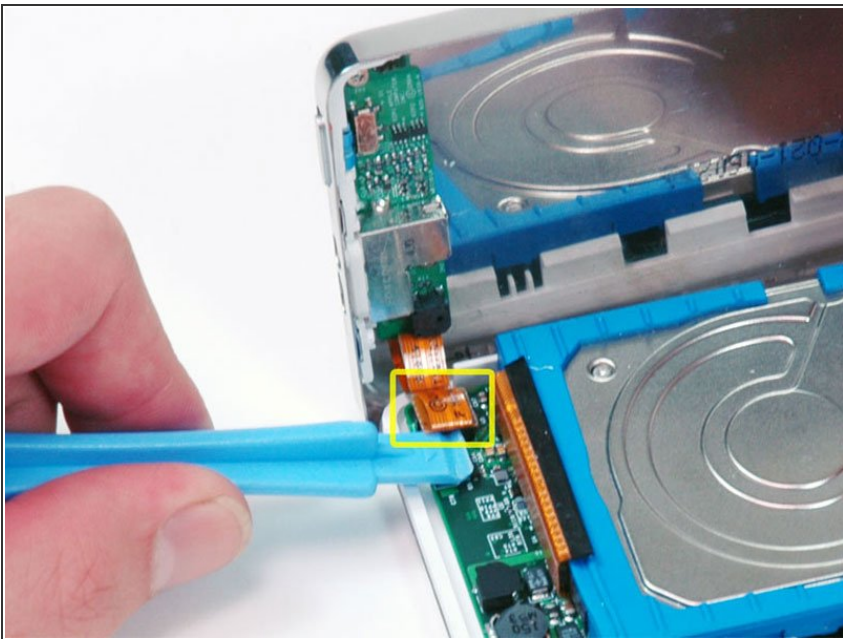
- Insert an opening pick as far as possible into the seam between the plastic front and the metal rear panel, on the right edge of the iPod.
 - ⓘ You may need to rock the pick back and forth to slide it in farther.
- Use the opening pick to pry up against the plastic front panel and release five retaining tabs (seen in the third photo).
- Slide the pick along the edge of the iPod and continue prying to release the rest of the retaining tabs.
- After all five tabs along the right side are free, the case should easily open.

Step 3



- ⓘ The iPod case is now open, but don't separate the two halves just yet. There is still an orange ribbon cable connecting the headphone jack to the logic board.
- Open the case like a book with the dock connector edge at the top, and lay the rear panel next to the front half of the iPod.

Step 4

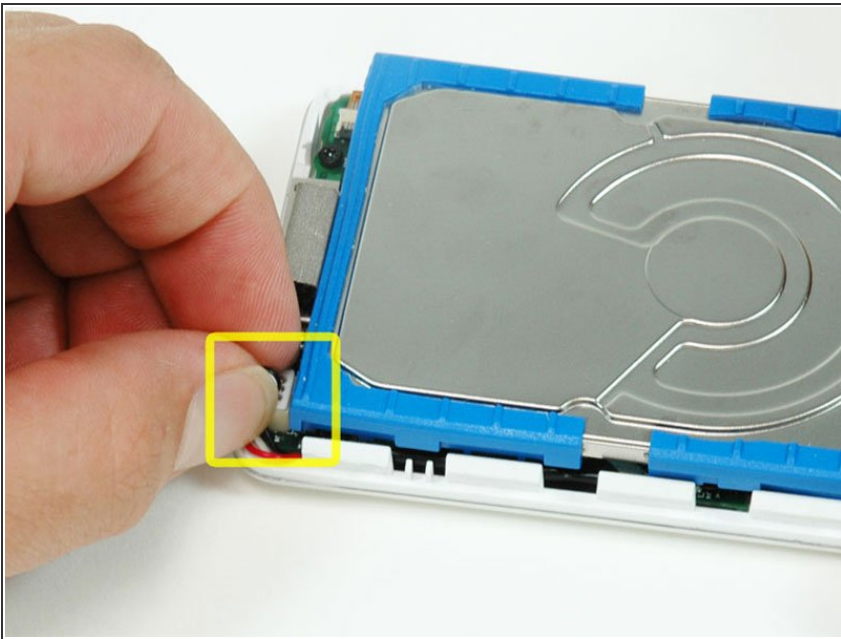


- Use a plastic tool or your fingernails to carefully disconnect the orange headphone jack cable. Be sure to

pull straight up on the connector, not the cable itself.

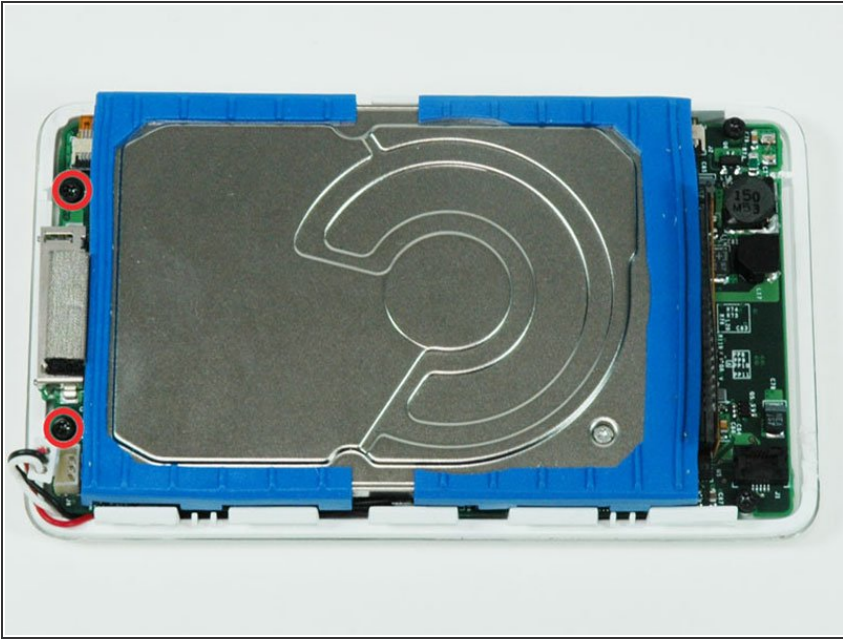
- ⓘ This ribbon cable is very fragile. If you are replacing the battery, you can choose to skip this step and keep the headphone jack connected to the motherboard. Prop and tape the rear case against a box to keep it in place. Be very careful not to strain the fragile headphone jack cable as you work.

Step 5 — Battery



- Carefully disconnect the white battery connector from the logic board. Be sure to pull only on the connector itself and not on the cables.

Step 6



- Remove the 2 black T6 Torx screws from the left side of the logic board.

Step 7



- Use one hand to lift the hard drive up in order to access the battery beneath.
- Carefully thread the battery cable around the end of the logic board. Be careful not to pull up on the logic board too much while freeing the battery cable.

Step 8



- Lift the battery out of the front case by pulling it up by the battery leads.
- If necessary, grab the battery to pull it off the adhesive securing it to the front case.
- ⓘ It may be helpful to use a spudger to pry the battery off its adhesive.
- Lift the battery up and out of the front case.

To reassemble your device, follow these instructions in reverse order.