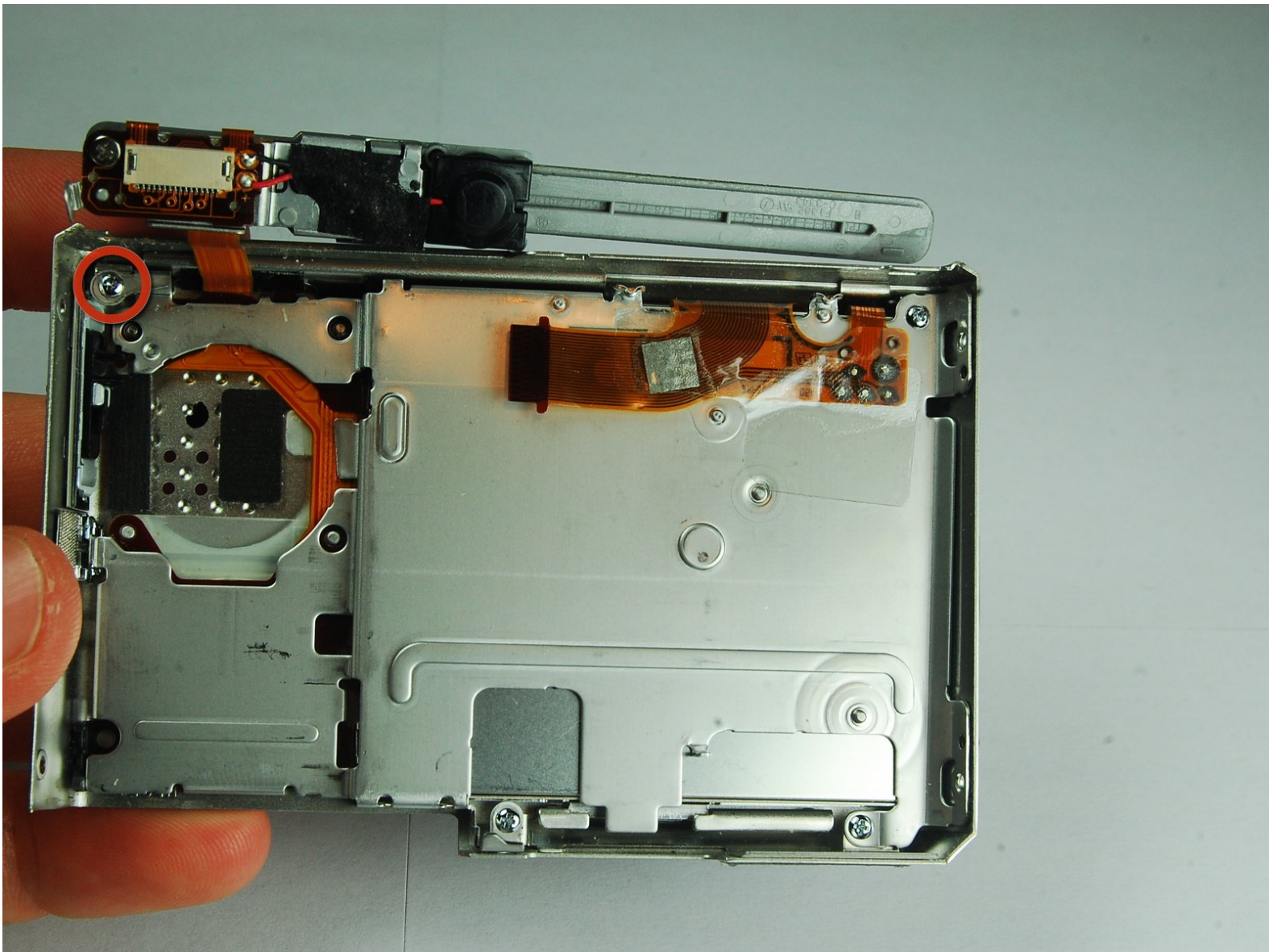




Sony Cyber-shot DSC-T1 LCD Replacement

In this guide you will learn how to remove the LCD from the camera. Follow this if you would like to replace a cracked or broken screen.

Written By: iDeleted



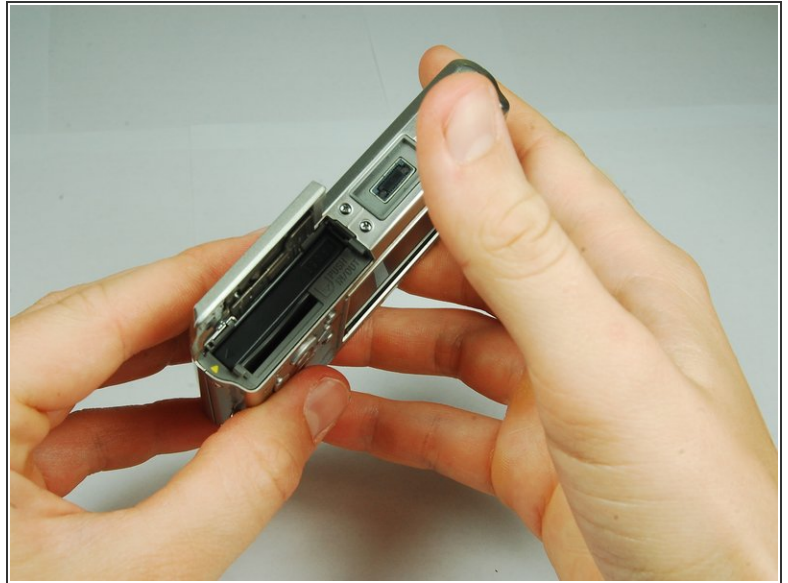
INTRODUCTION

Taking out the LCD is one of the more difficult things to do on your Cyber-shot. Because the LCD is located at the back of the camera you will have to take apart the entire camera just to reach it.

TOOLS:

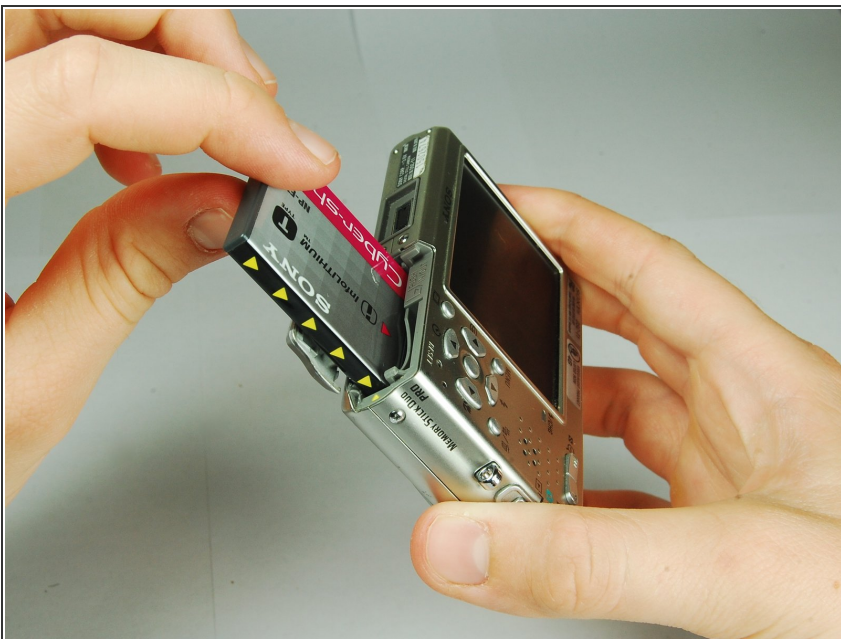
- [Phillips #00 Screwdriver](#) (1)
 - [Spudger](#) (1)
 - [Tweezers](#) (1)
-

Step 1 — Battery



- Locate the battery door at the bottom of the camera.
- Press down on the door and slide it back. The door will pop open.


Step 2



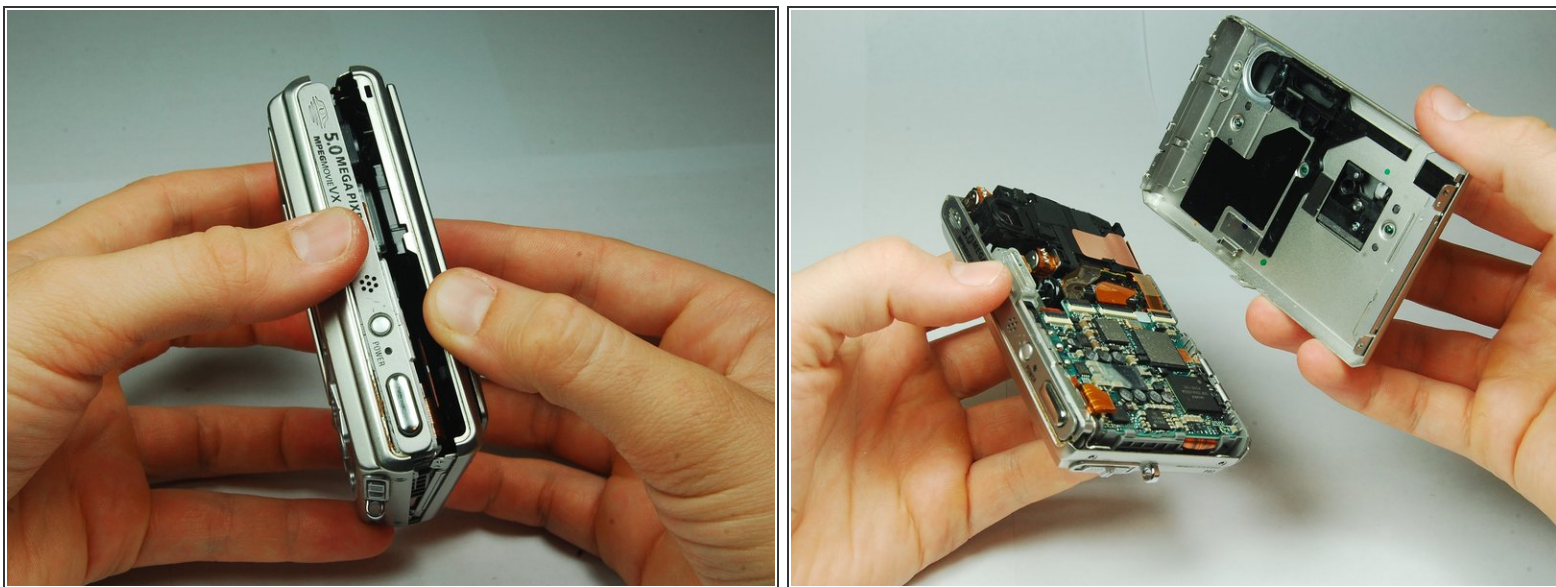
- Remove the battery from the door that you opened in the previous step.

Step 3 — Disassembling Sony Cyber-shot DSC-T1 Removing Front Cover



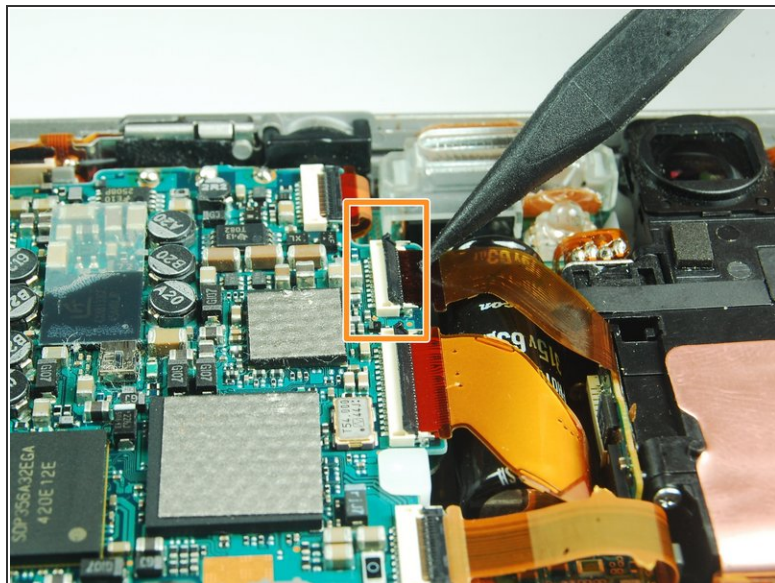
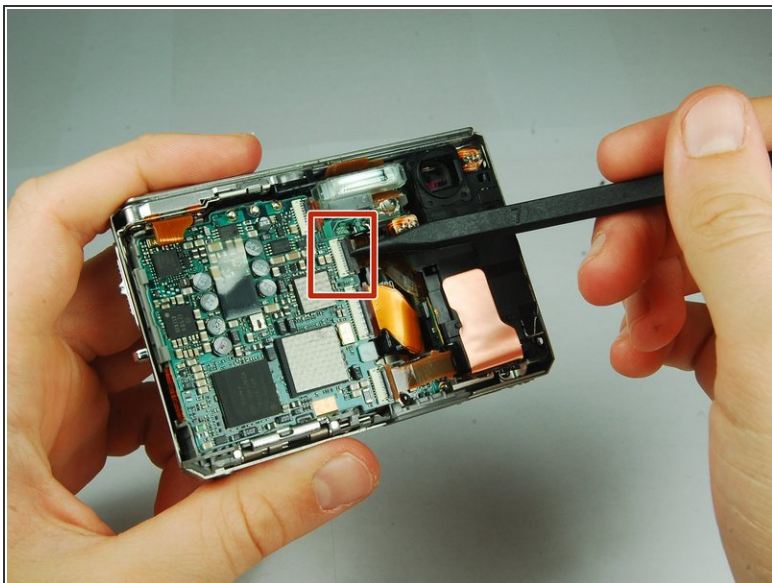
-  There are two screws on the left and right sides of the camera, and two screws on the bottom.
- Use a PH00 screwdriver and remove the six 2.9mm screws.

Step 4



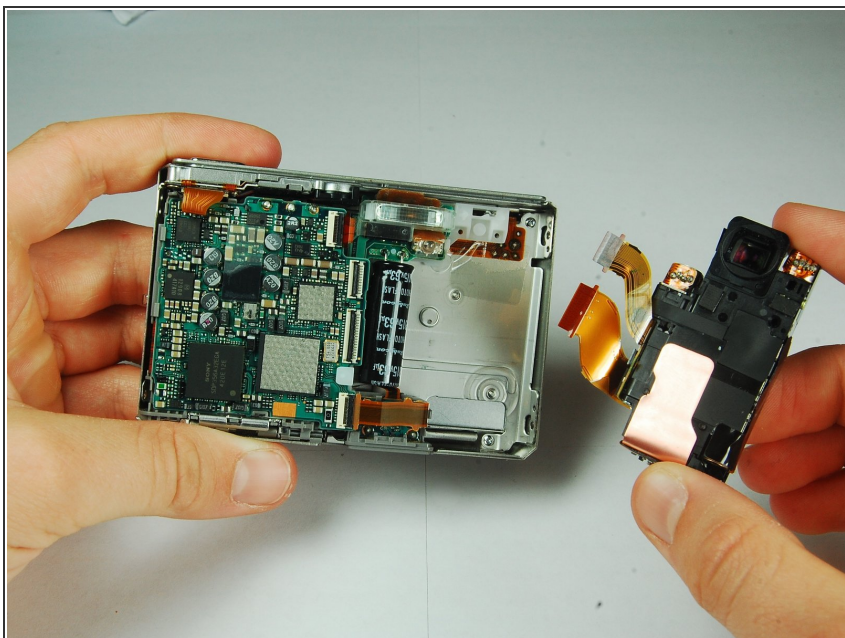
- Use hands to gently pry the front casing away from the camera.

Step 5 — CCD Sensor Module



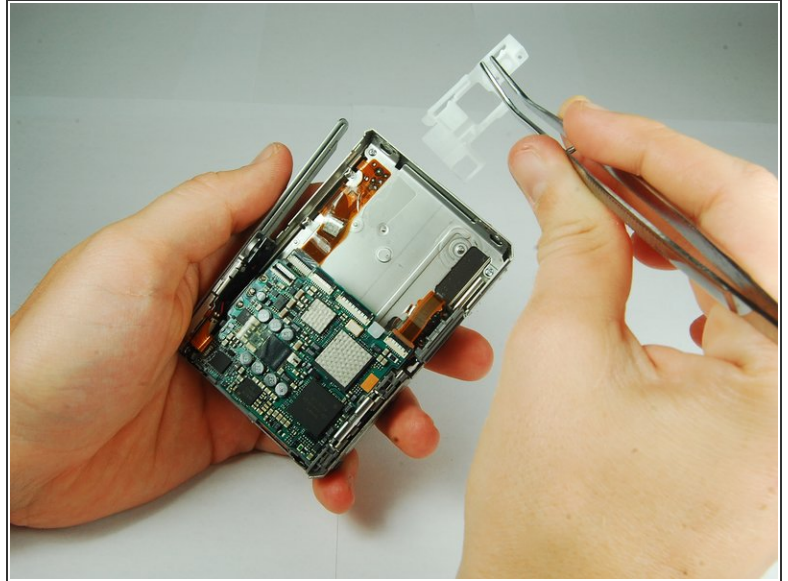
- Use the tip of a spudger to flip up the tab on the ZIF connector securing the motherboard ribbon cable.
- The second picture shows what these tabs look like in their open positions.

Step 6



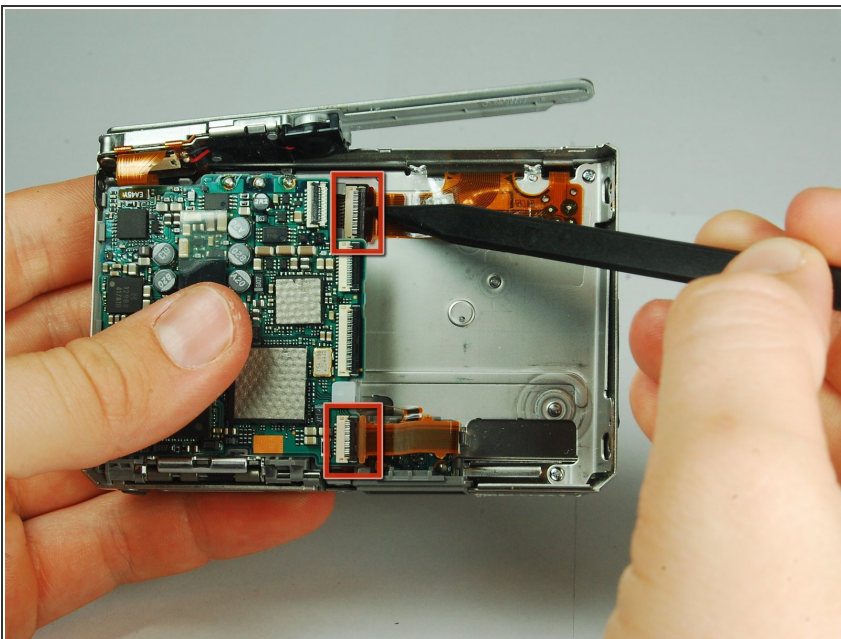
- Grasp the CCD Sensor Module and remove it.

Step 7 — Motherboard Assembly



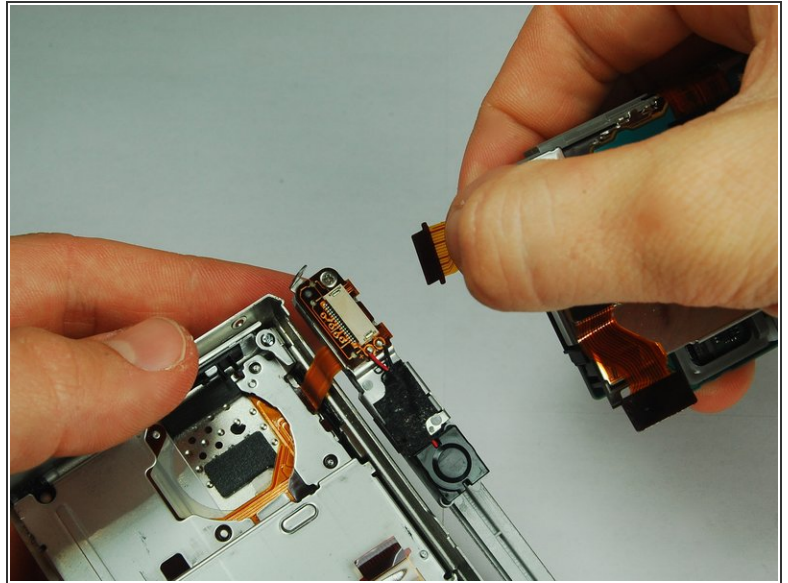
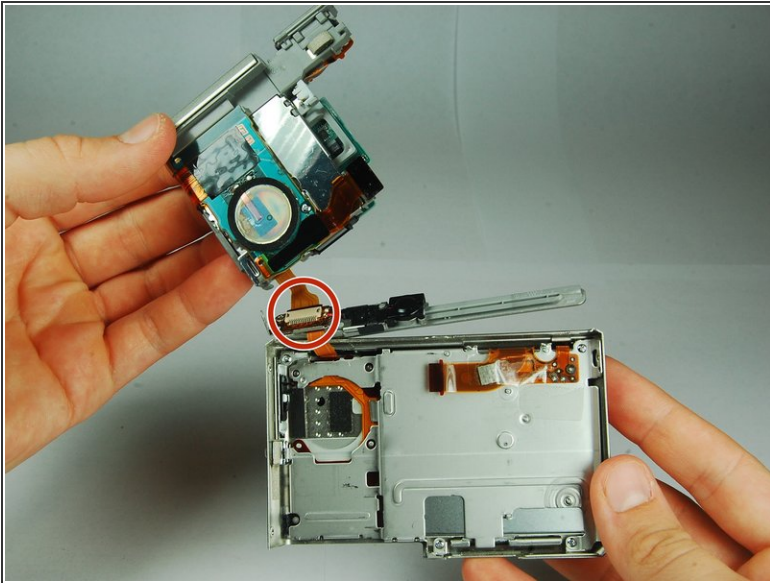
- Use tweezers to slide the white piece on the back of the back cover to the right.
- This will dislodge the white piece, allowing you to remove it from the back cover.

Step 8



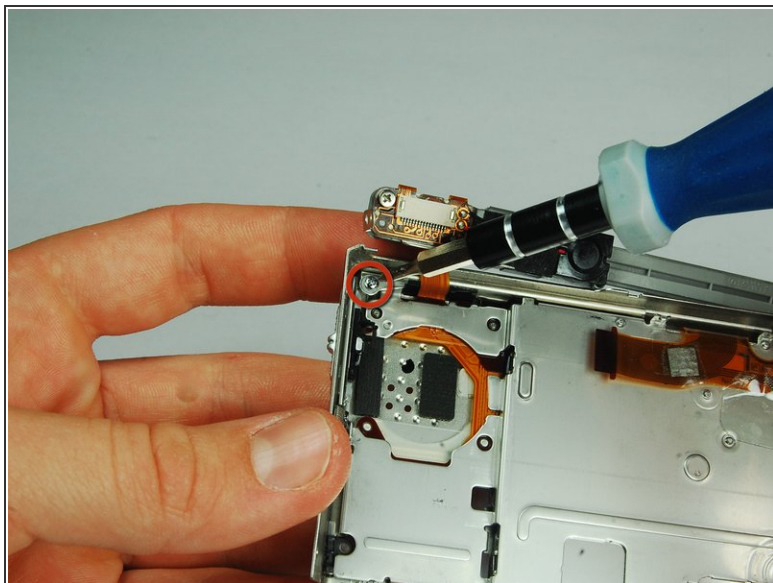
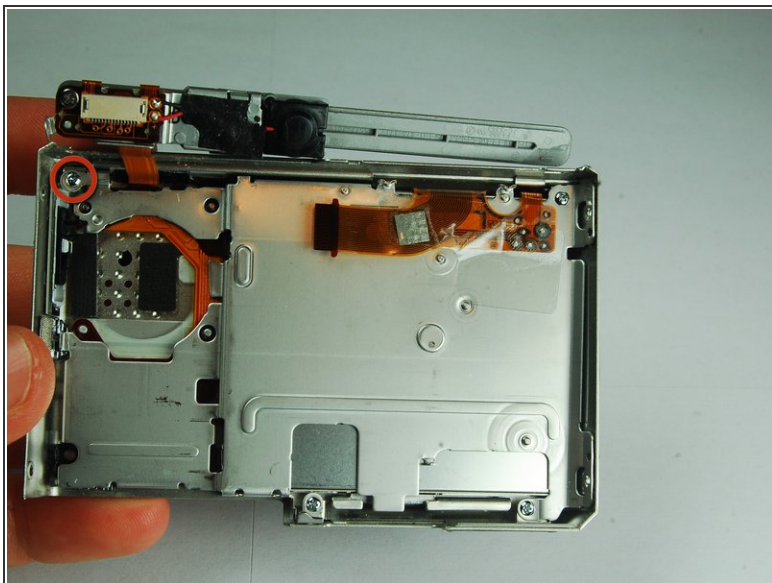
- Use the tip of a spudger to flip up the tab on the ZIF connector securing the motherboard ribbon cable.
- Remove the ribbon cables from these two ZIF connectors.

Step 9



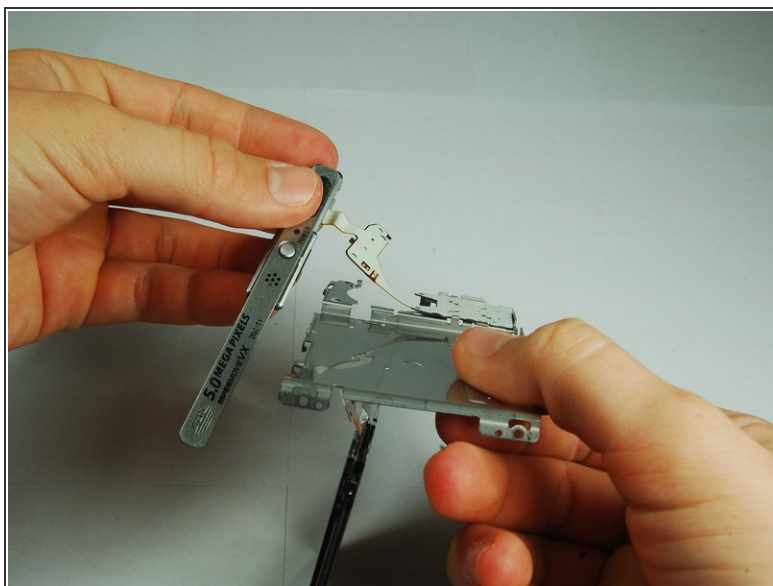
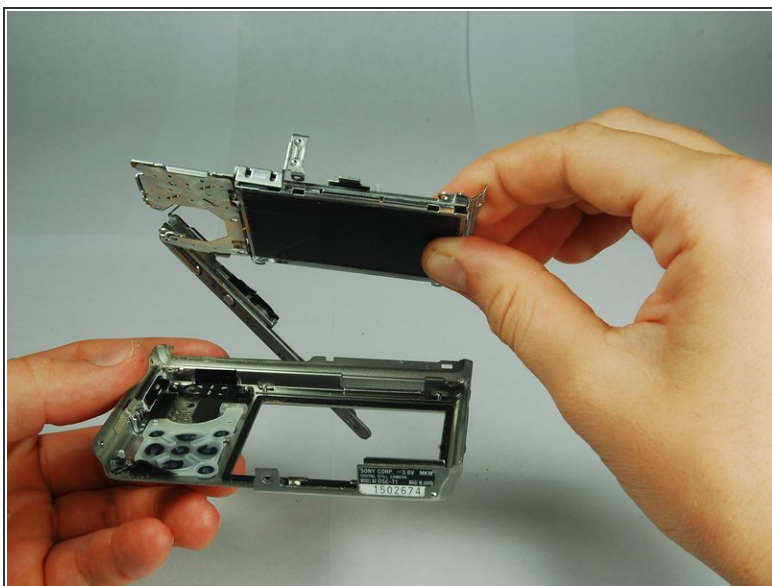
- Lift the motherboard assembly up and rotate it so you can easily see where the internals connect to the back cover.
- Remove the ZIF connectors from the clamp on the left end of the top piece.
- The motherboard assembly is now separated from the back cover.

Step 10 — LCD



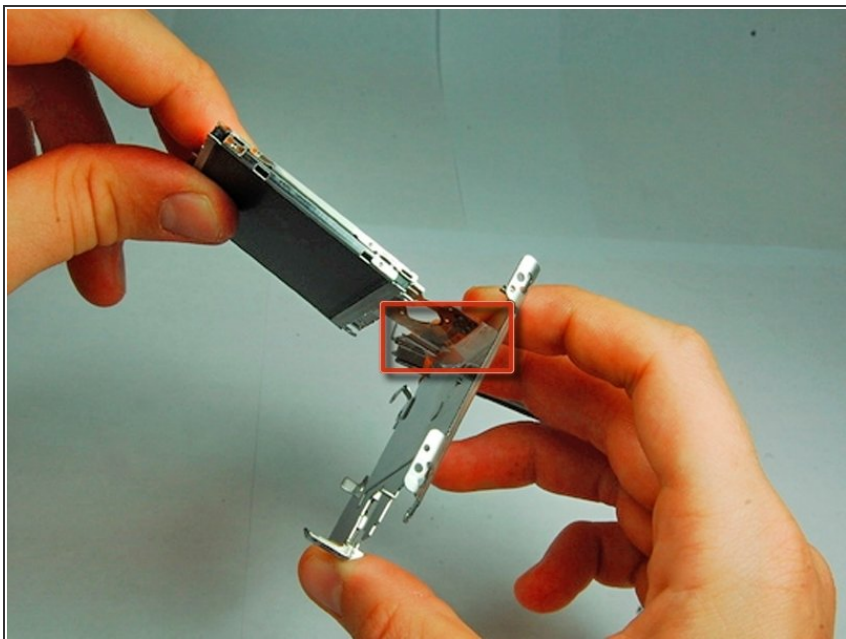
- Use a PH00 screwdriver to remove the 2.9 mm Phillips screw on the upper left side of the case.

Step 11



- Remove the back frame from the LCD assembly.
- Turn the LCD assembly over and gently pull the top bar off (which has the shutter and power buttons).

Step 12



- Pull the tape off that holds the LCD to the assembly.

To reassemble your device, follow these instructions in reverse order.