



# Nintendo DSi Upper LCD/Speakers Replacement

This guide will walk you through replacing the...

Written By: Walter Galan



# INTRODUCTION

This guide will walk you through replacing the upper LCD on your DSi.

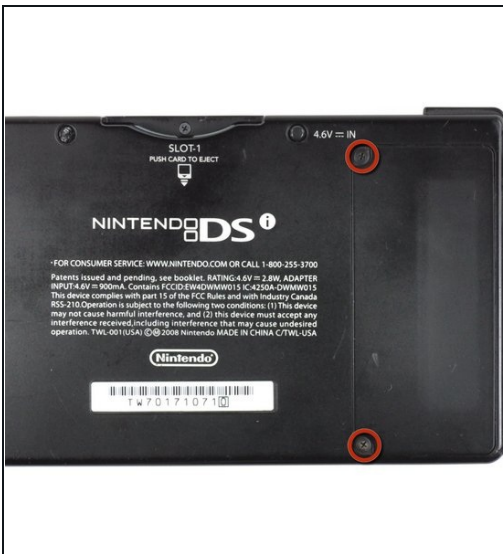
## TOOLS:

Phillips #00 Screwdriver (1)  
iFixit Opening Tool (1)  
Push Pin (1)  
Lead-Free Solder (1)  
Soldering Iron (1)  
Spudger (1)  
Tweezers (1)

## PARTS:

Nintendo DSi Upper LCD (1)  
Nintendo DSi Upper Screen (1)

## Step 1 — Battery Cover Removal



- Unscrew the two Phillips screws securing the battery cover to the lower case.
  - ① The screws remain captive to the battery cover.
- Grasp the battery cover and lift it out of the lower case.
  - ① If it's difficult to grasp, lightly tap the opposite side of the device.

## Step 2 — Taking out the Battery



- Using a spudger tool (or your fingernail), lift up the battery from the top.
  - ① There's a small tab on the top of the battery to make removal easier.
  - ① The liquid damage indicator sits underneath the battery. Pry gently, or you may damage the indicator.
- Grasp the battery and remove it from the DSi.

## Step 3 — Lower Case Assembly



- Two screws are hidden underneath two rubber feet highlighted in red.
- Use the tip of a spudger to pry the rubber feet out of the lower case.
- ① Depending on the age of your device, the rubber feet may crumble apart as you pry them out. If so, use a fine-tipped tool to scrape out any stuck pieces of rubber.

## Step 4



- Remove the following screws securing the lower case to the body of the DSi:
  - Six 5.2 mm Phillips #00 screws.
  - One 2.7 mm Phillips #00 screw.

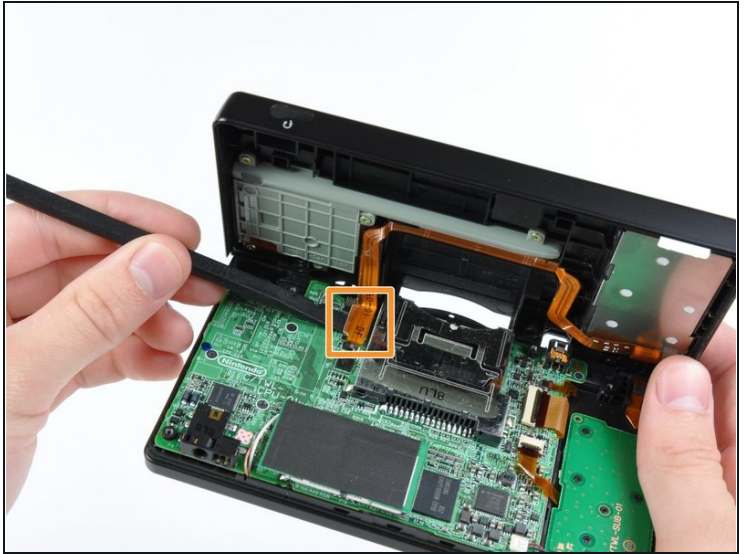
## Step 5



- Insert the spudger in between the lower casing and lower panel near the top right corner of the DSi.
- Carefully run the spudger along the edge of the outer casing, creating an opening between the body and the casing.
- Continue running the spudger around the body of the DSi until the majority of the lower case has been separated.



## Step 6



- Carefully lift the lower casing from its bottom edge.

⚠ The lower case is still attached to the motherboard by the volume and SD board cable highlighted in red. Do not try to completely remove the lower case of the DSi yet.

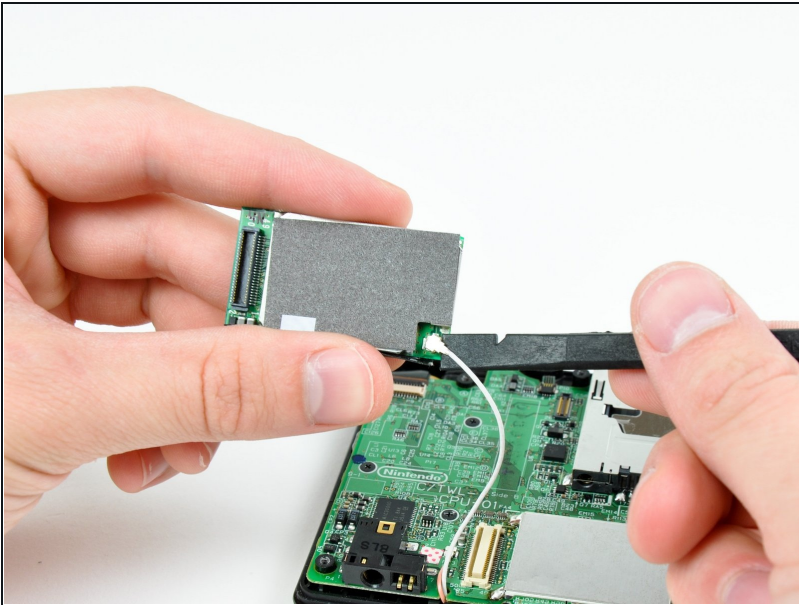
- Pry the volume and SD board cable up from its socket on the motherboard using a spudger.
- Once the cable is completely removed, then you may take off the entire outer casing.

## Step 7 — Wi-Fi Board



- Pull the Wi-Fi board away from the motherboard by its edge closest to the headphone jack.

## Step 8



- Pry the Wi-Fi antenna connector straight up from its socket on the Wi-Fi board.

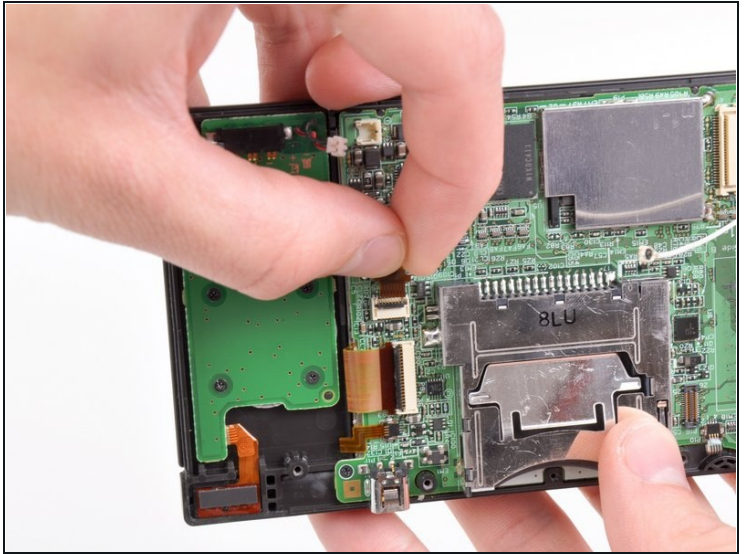
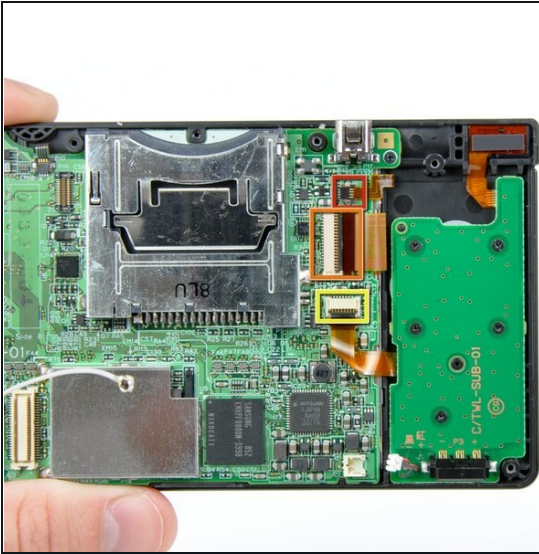
## Step 9 — Motherboard



- Use the tip of a spudger to pry the power board connector out of its socket on the motherboard.



## Step 10



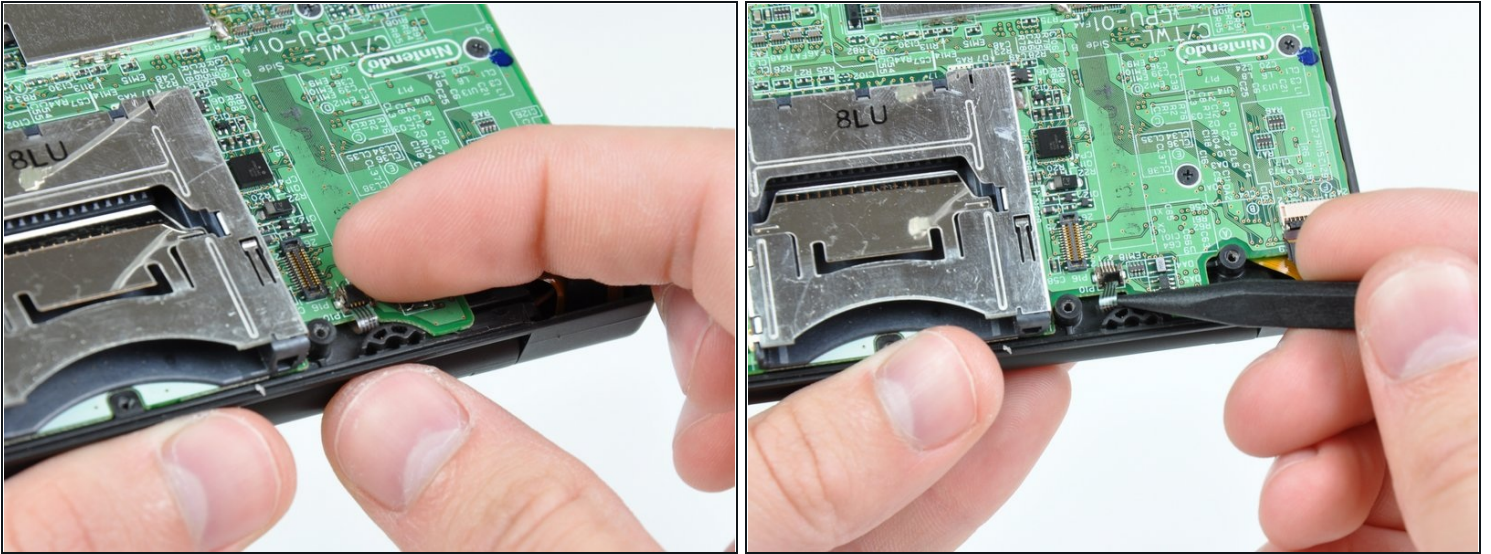
- Use your fingernail or the edge of a plastic opening tool to flip up the retaining flap on the following three ZIF sockets:

- Lower touchscreen cable
- Lower LCD cable
- Power board cable

⚠ Be sure you are prying up on the hinged retaining flaps, **not** the sockets themselves.

- After flipping up the locking tabs on all three sockets, use your fingers or a pair of tweezers to gently pull the cables straight out of their sockets.

## Step 11

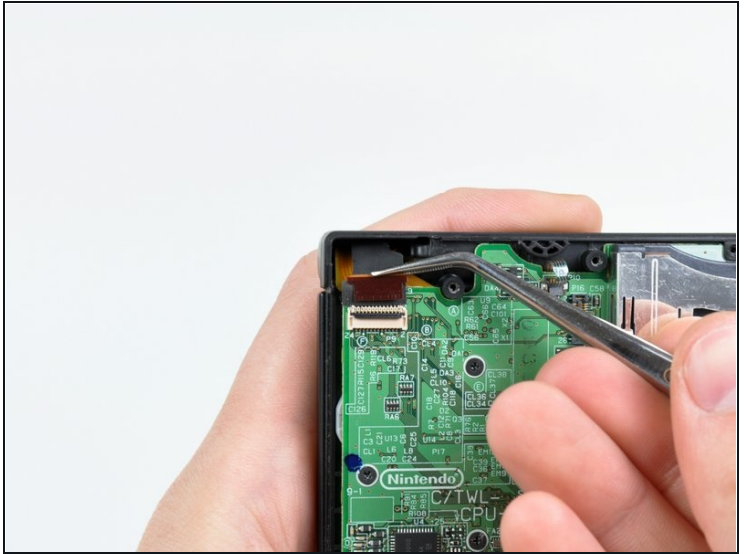
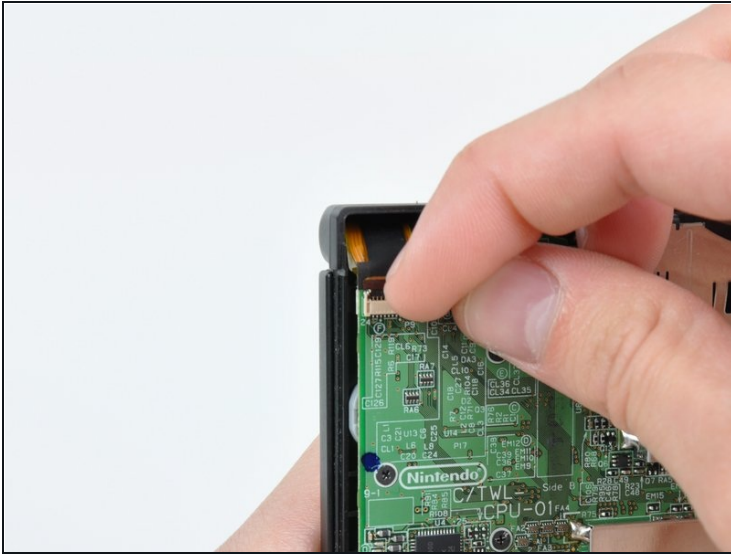


- Use your fingernail or the edge of a plastic opening tool to carefully flip up the touchscreen ribbon cable retaining flap.

⚠ Make sure you are flipping up the retaining flap, **not** the socket itself.

- Use the tip of a spudger to pull the touchscreen ribbon cable straight out of its socket.

## Step 12

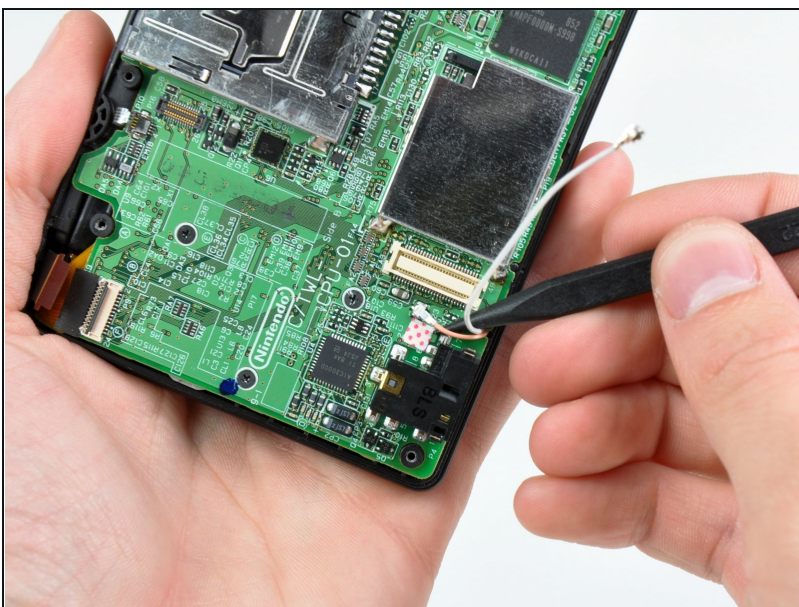


- Use your fingernail or the edge of a plastic opening tool to carefully flip up the dual camera ribbon cable retaining flap.

⚠ Make sure you are flipping up the retaining flap, **not** the socket itself.

- Use the tip of a spudger to pull the dual camera ribbon cable straight out of its socket.

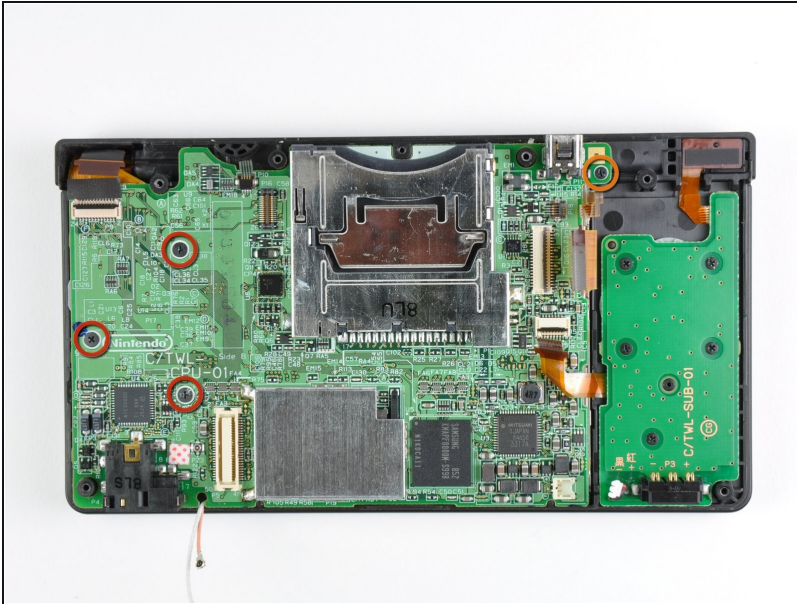
## Step 13



- With the tip of a spudger, Pry the microphone antenna up off its socket on the motherboard.

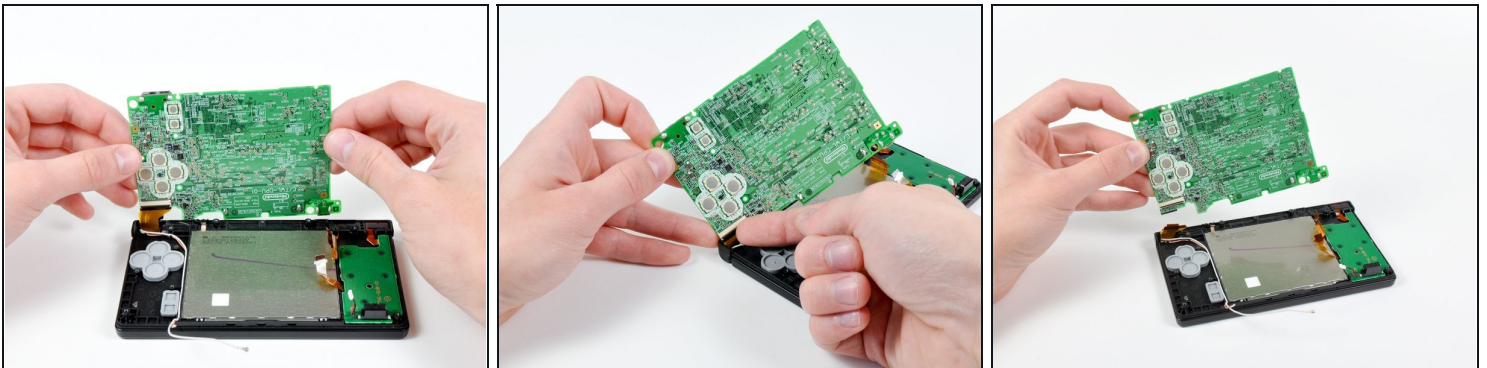


## Step 14



- Remove the following four Phillips screws securing the motherboard to the DSi framework.
  - Three longer screws.
  - One short screw.
- Pull the microphone and Wi-Fi antenna cables out of the notch cut into the motherboard near the headphone jack.

## Step 15



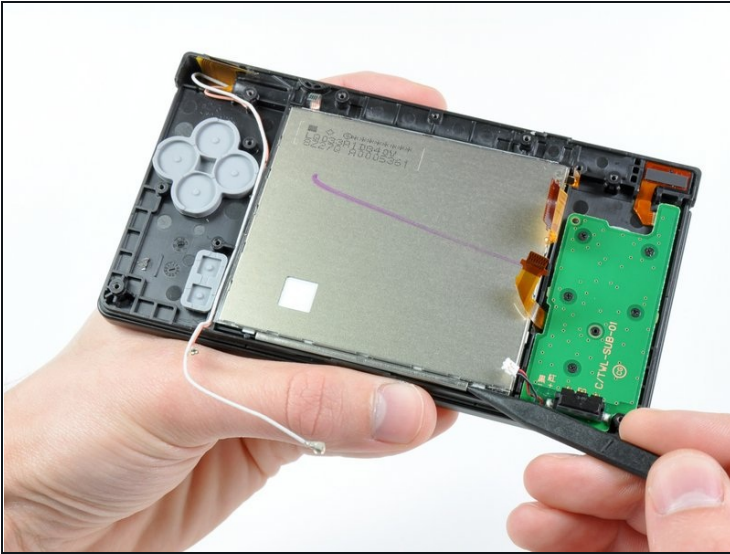
- Slightly lift the motherboard upwards to reveal the upper LCD ribbon cable above the ABXY buttons .
- Use your fingernail or the edge of a plastic opening tool to carefully flip up the upper LCD ribbon cable retaining flap.

⚠ Make sure you are flipping up the retaining flap, **not** the socket itself.

- Remove the motherboard from the DSi.



## Step 16 — Lower LCD Assembly



- Use the tip of a spudger to pry the metal backing of the lower LCD up from the DSi's framework.
- Lift the lower LCD assembly out of the DSi.

## Step 17 — Upper LCD/Speakers



- Use a pushpin to remove the four plastic screw covers on the front bezel.

## Step 18



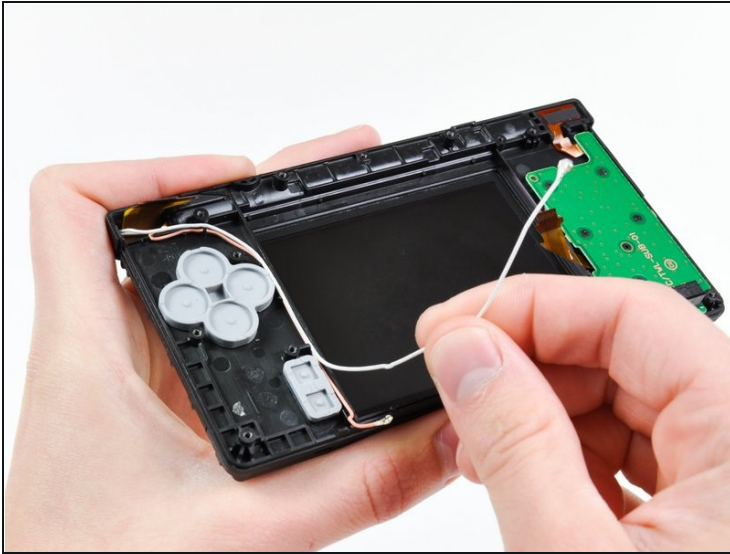
- Remove the four Phillips screws securing the rear bezel to the front bezel.

## Step 19



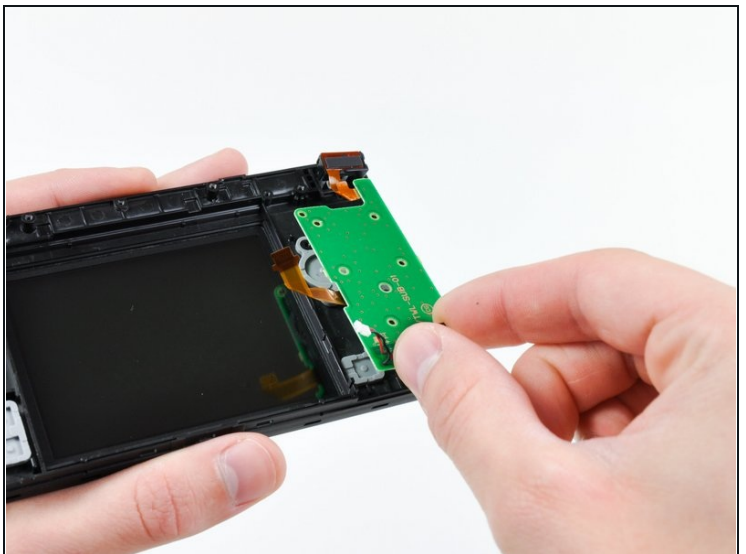
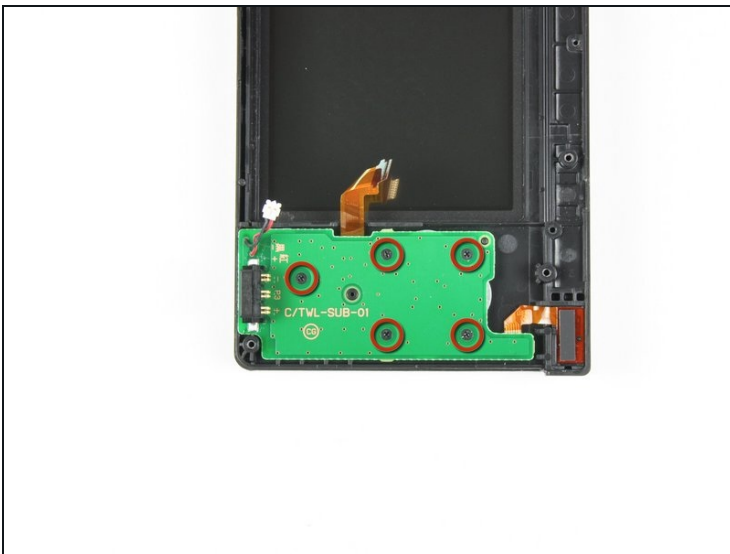
- Using two hands, gently slide the rear bezel upwards.
- ① The rear bezel will move only about 2 mm.
- Slightly close the case of the DSi and lift the rear bezel straight up out of the DSi.

## Step 20



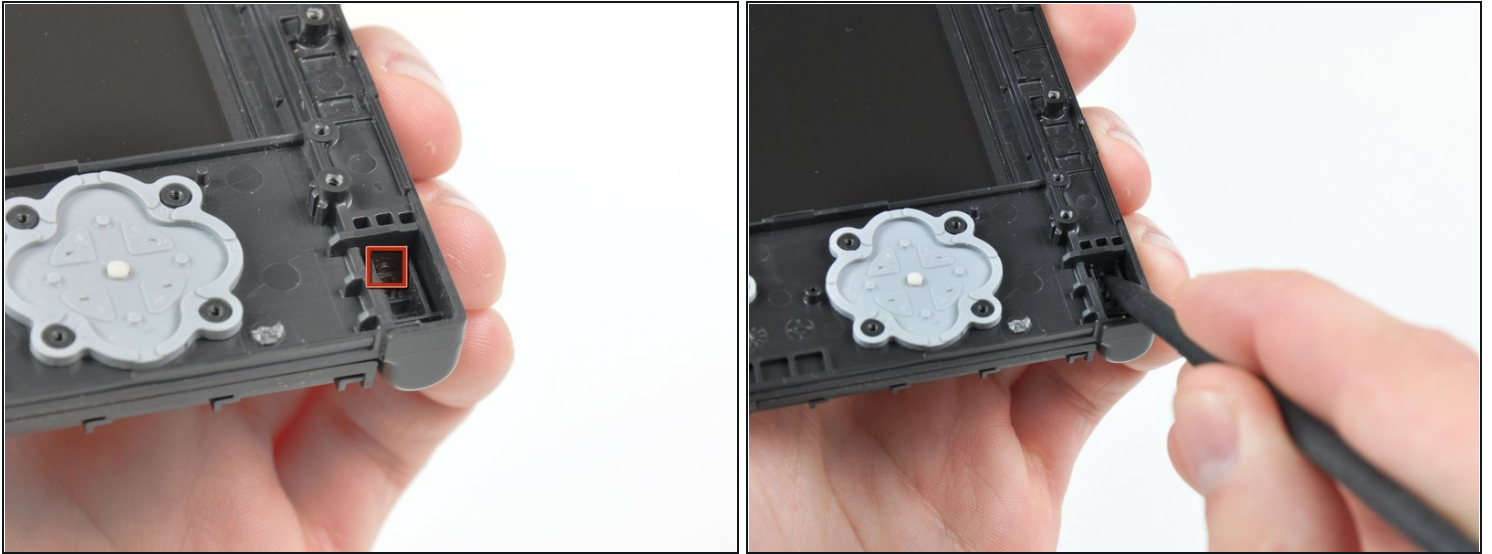
- Continue de-routing the microphone and Wi-Fi antenna cables through the opening located on the bottom DSi's framework.

## Step 21



- Remove the five Phillips screws securing the power board to the DSi's framework.
- Lift and remove the power board from the DSi.

## Step 22



- Push the metal hinge pin inward on the D-pad side of the front lower panel with the tip of a spudger.
- The pin should move about 3 mm and stop. It is not necessary to try to completely remove the pin.



## Step 23



- Slightly detach the lower and upper halves of the DSi.

**⚠ Do not completely separate both halves yet. There are several ribbon cables that remain threaded through both panels.**

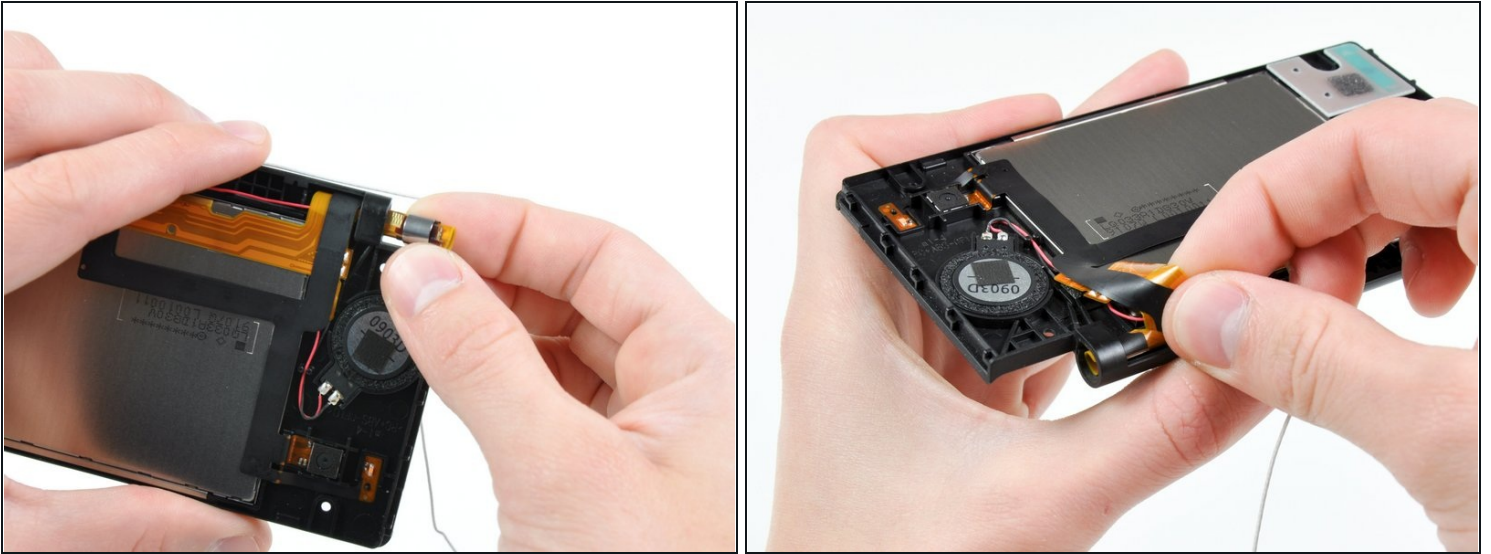
- De-route the upper LCD and dual camera ribbon cables through the slit near the ABXY side of the front lower panel.
- Separate the lower and upper halves from each other.

## Step 24



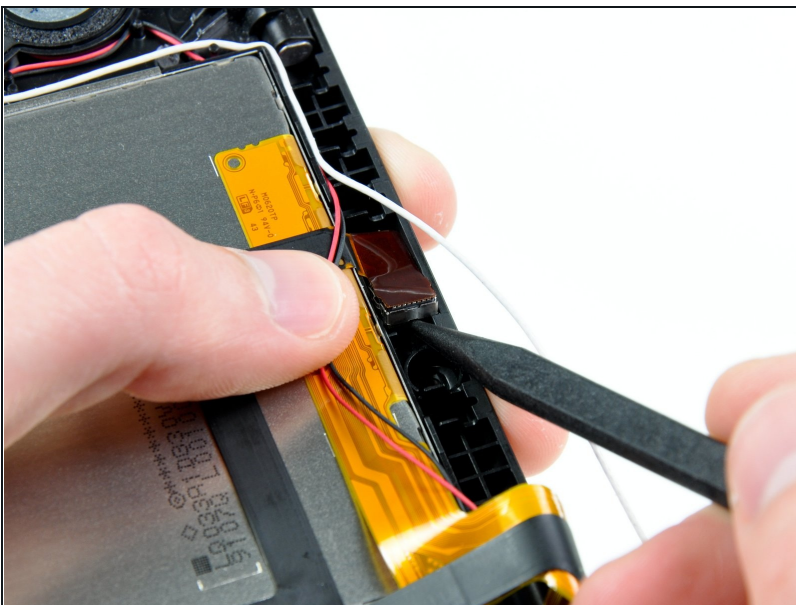
- Using your fingers, grasp the microphone cable and de-route it through the hinge.
- The microphone will likely pop out of its housing, so it is probably easier to completely remove it at this point.
- De-route the Wi-Fi cable through the hinge.

## Step 25



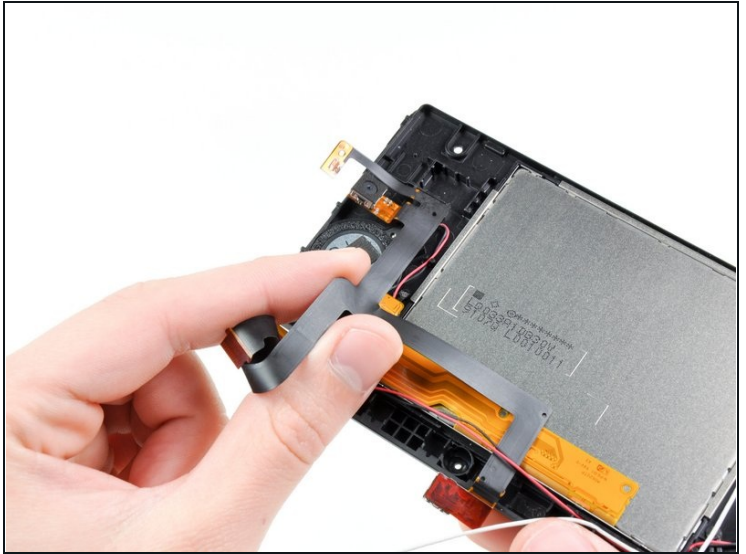
- Tightly coil the display and dual camera ribbon cables enough to push them through the steel hinge tube.
- Remove the steel hinge tube.
- Carefully push both coiled ribbon cables through the tube molded into the front upper panel.

## Step 26



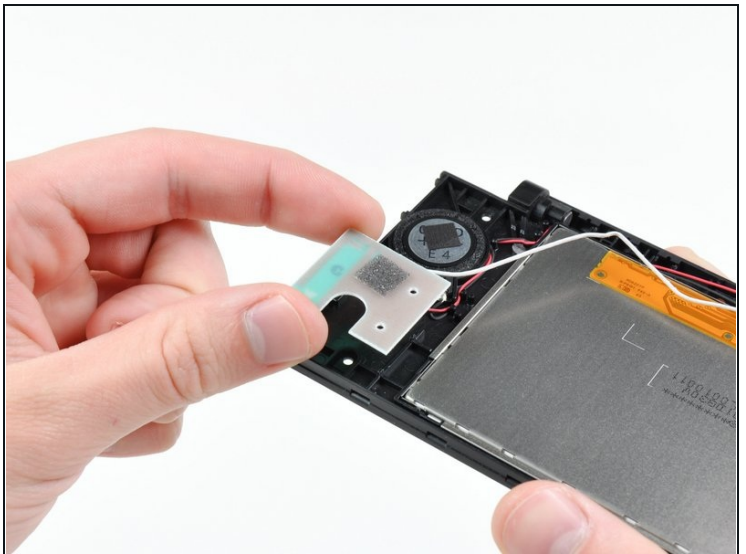
- Pry the front-facing camera straight up out of its housing in the front bezel.

## Step 27



- Lift the rear-facing camera out of its housing in the front bezel.
- Remove the dual camera cable assembly from the DSi.

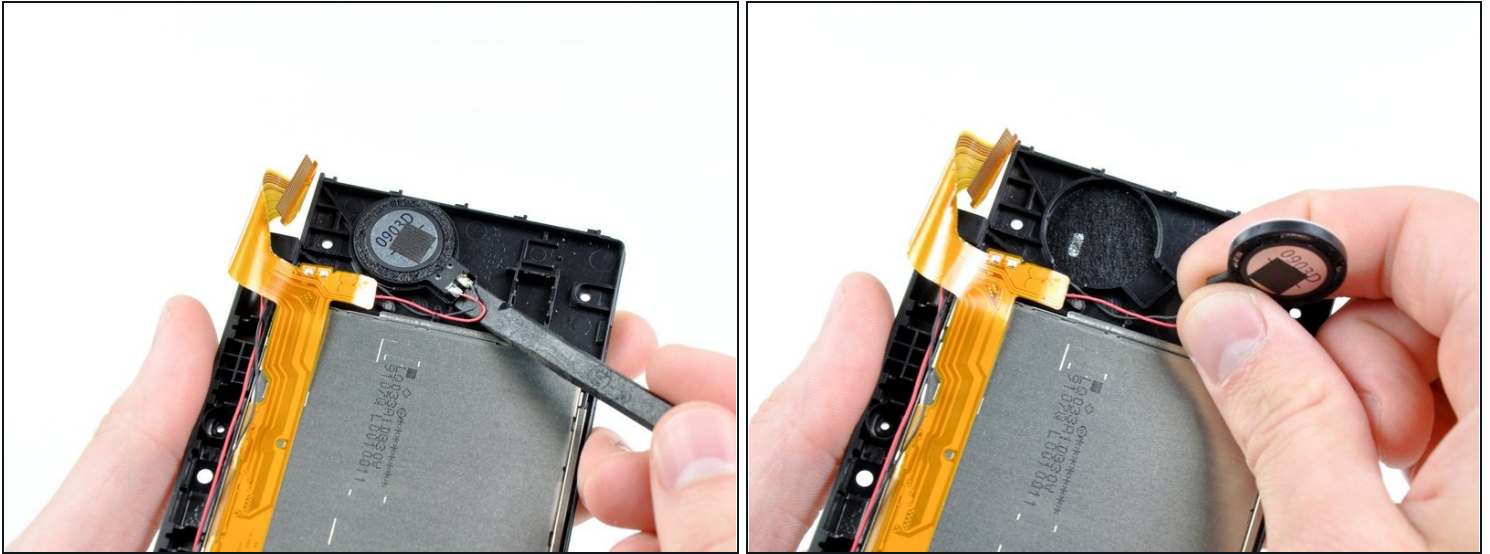
## Step 28



- De-route the Wi-Fi antenna cable from its channel in the front bezel.
- Lift the Wi-Fi antenna board straight up and remove it from the DSi.

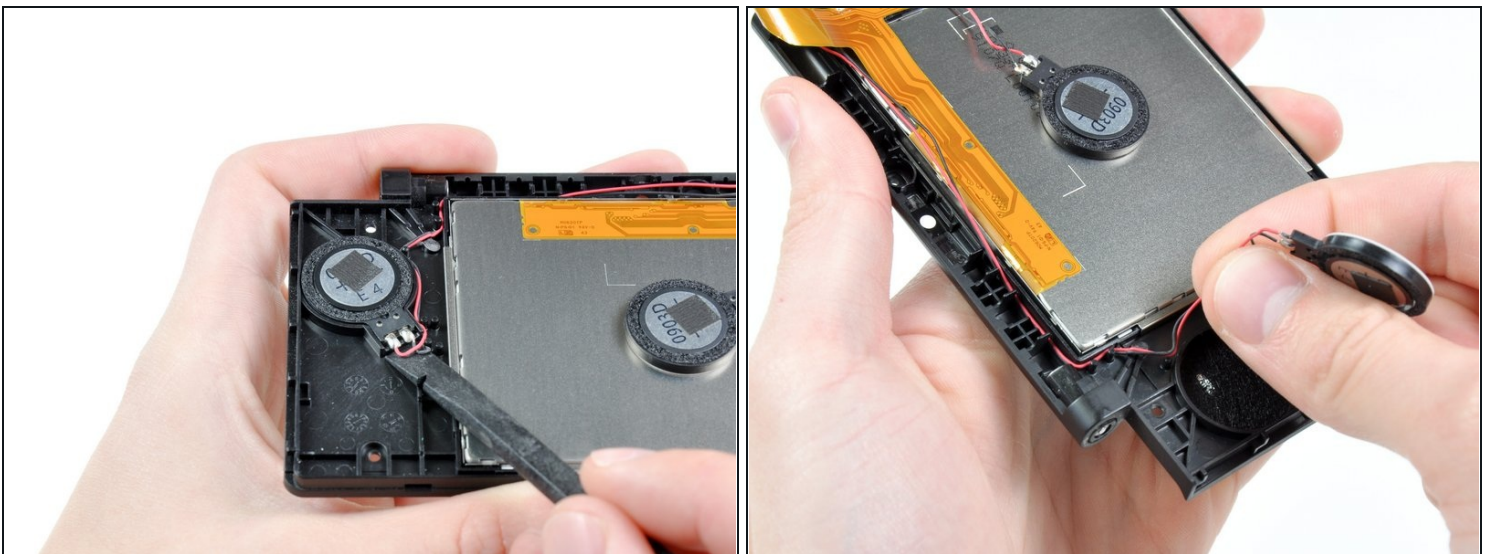


## Step 29



- Use the flat end of a spudger to pry the right speaker straight up and out of its housing in the front upper panel.
- Lift the right speaker and set it on top of the upper LCD.

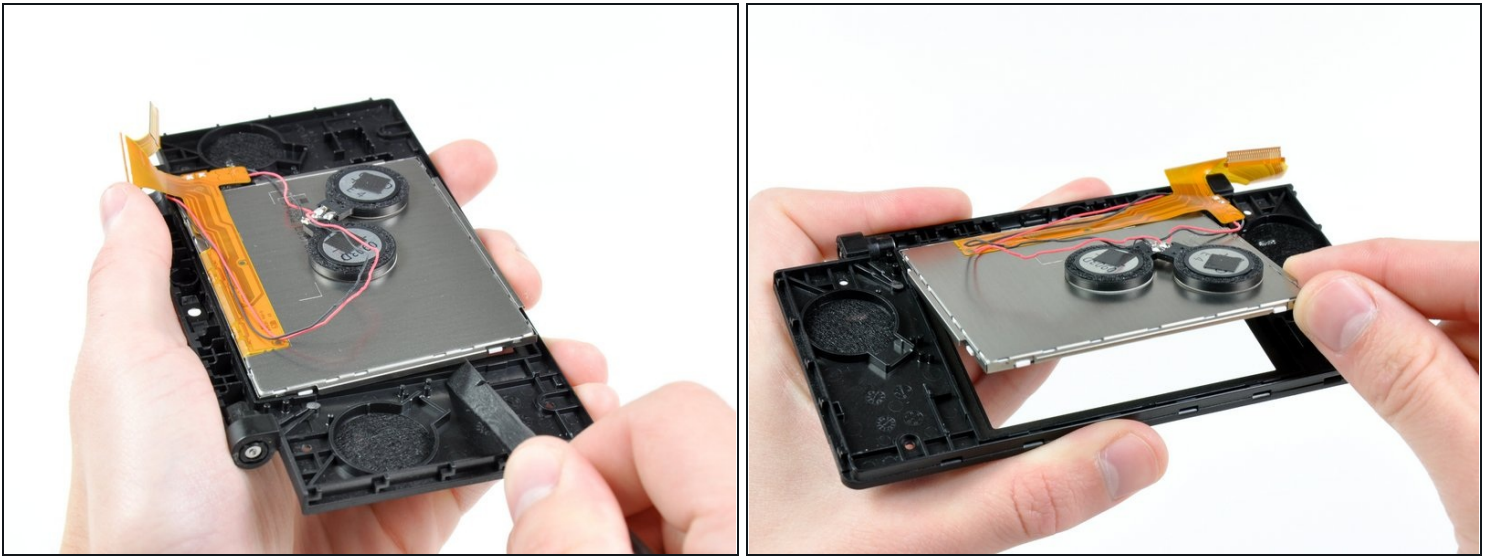
## Step 30



- In the same manner as previously described, remove the left speaker.
- De-route the left speaker cables from underneath the upper LCD.
- Lay the left speaker on top of the upper LCD.

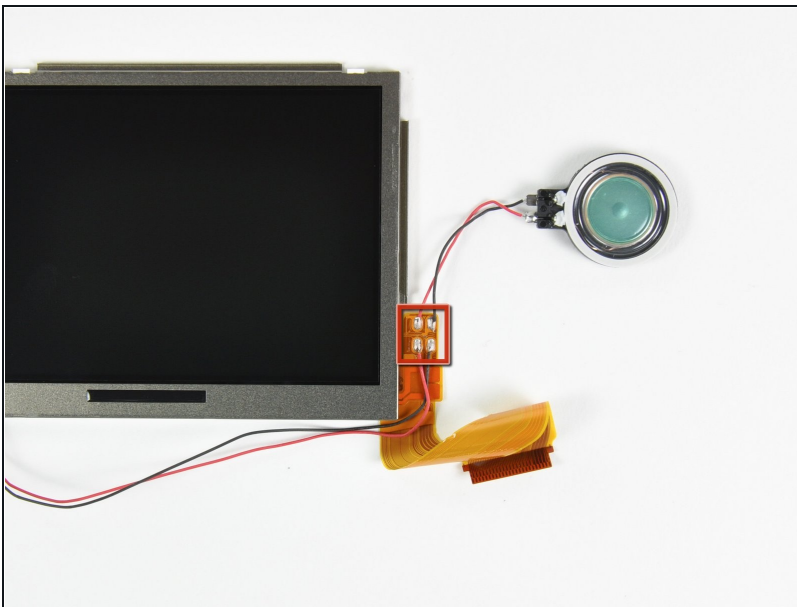


## Step 31



- Cautiously wedge the flat end of spudger underneath the upper LCD.
- Loosen the adhesive by running the spudger along the perimeter of the upper LCD.
- Lift the upper LCD by its upper right corner and remove it from the front upper panel.

## Step 32



- Desolder the speakers from the upper LCD by heating up the solder joints with a soldering iron and simultaneously using a pair of tweezers to pull the speaker wires away from the logic board.
- ⓘ If you have never soldered before, we have a [guide](#) that makes it easy.

To reassemble your device, follow these instructions in reverse order.

