



Panasonic Lumix DMC-FX01 Camera Lens Replacement

If your Panasonic Lumix DMC-FX01 is unable to...

Written By: Caleb Fink



INTRODUCTION

If your Panasonic Lumix DMC-FX01 is unable to take pictures with the lens or the lens refuses to open, this guide will show you how to replace it. A camera lens is an important component to a digital camera. Without it, the image you want to capture will not be possible.

Smaller digital cameras like this one come with very small pieces that you will need to remove. As you will see later in the guide, it is important to be as delicate as possible with the pieces to ensure you do not cause any more damage to the broken item.

Before you begin, check the battery connector to see if any debris is preventing the battery to make the lens work (this is a common reason the lens will not work).

Once you have confirmed that the lens is not working, begin this guide.

TOOLS:

- [Phillips #00 Screwdriver](#) (1)
-

Step 1 — Battery



- Locate the memory card and battery card latch on the bottom of the camera.
- Slide the latch to the open position.

Step 2



- Open the battery latch, and slide the battery release lever to the right.

Step 3



- Remove the battery from the camera.

Step 4 — Rear Casing



- Remove the three 4.6 mm screws on the bottom of the camera using a Phillips #00 screwdriver.

Step 5



- Remove the single 3.2 mm screw on the left side of the camera using a Phillips #00 screwdriver.

Step 6



- Remove the left side casing.

Step 7



- Remove the two 3.2 mm screws on the right side of the camera using a Phillips #00 screwdriver.

Step 8



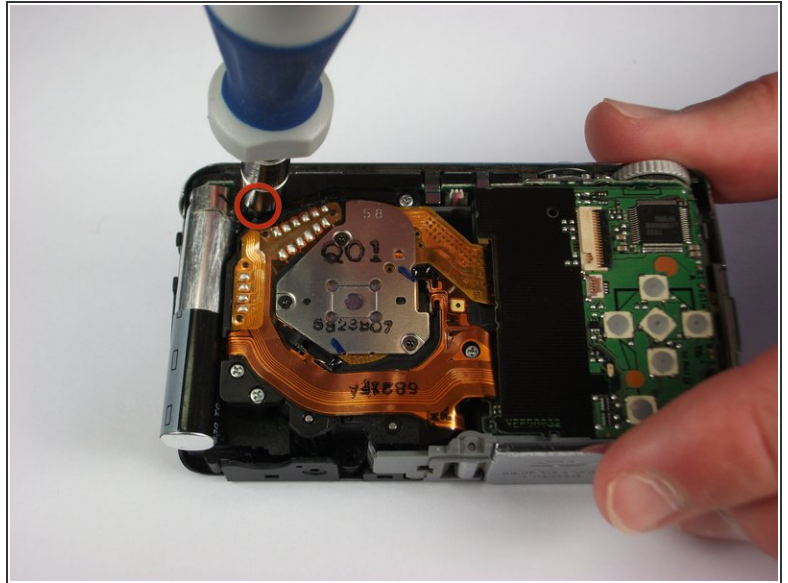
- Remove the bottom right panel.

Step 9



- Gently remove the back casing.
- Start at the bottom and carefully pry towards the top to get this piece free.

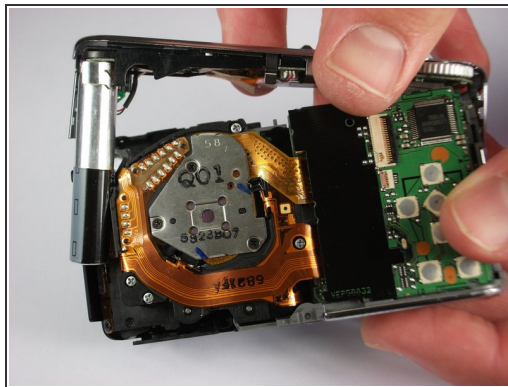
Step 10 — Front Casing



- Remove the two black 5.4 mm screws that hold in the front faceplate using a Phillips #00 screwdriver.

i There may be a third screw the the right of the lens assembly.

Step 11



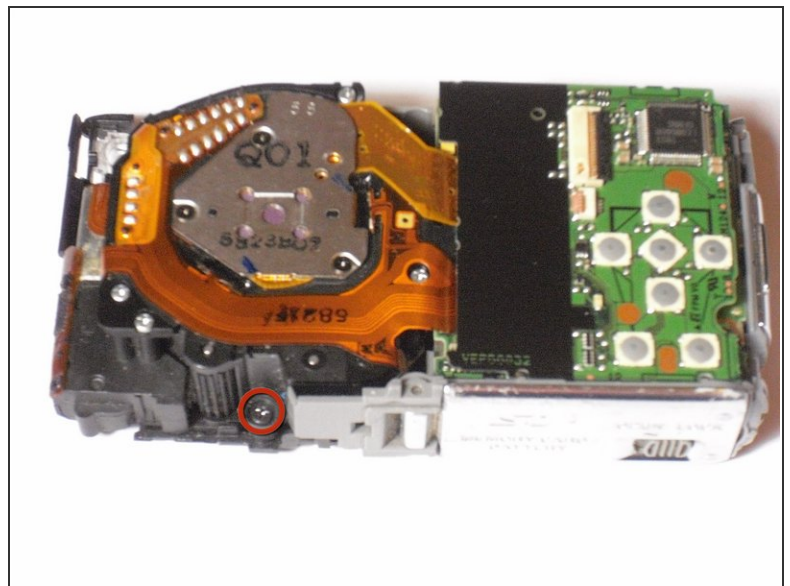
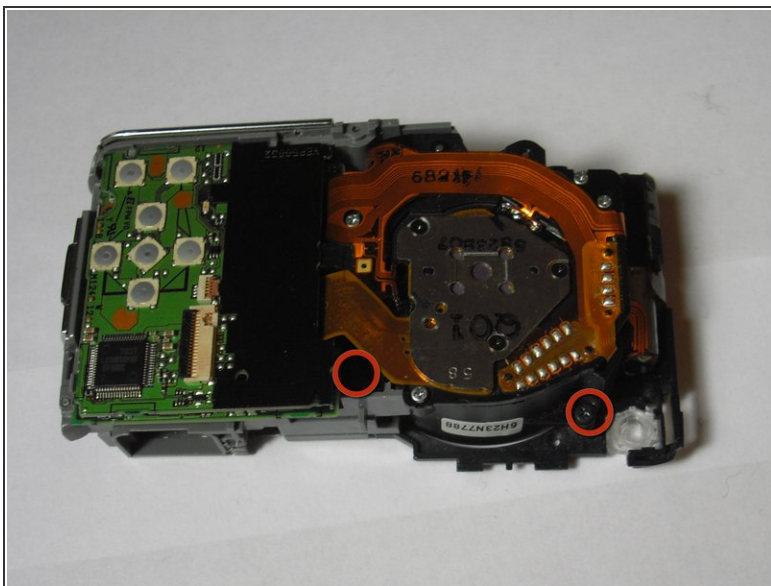
- Carefully remove the upper assembly, which houses the buttons and the flash battery.

Step 12



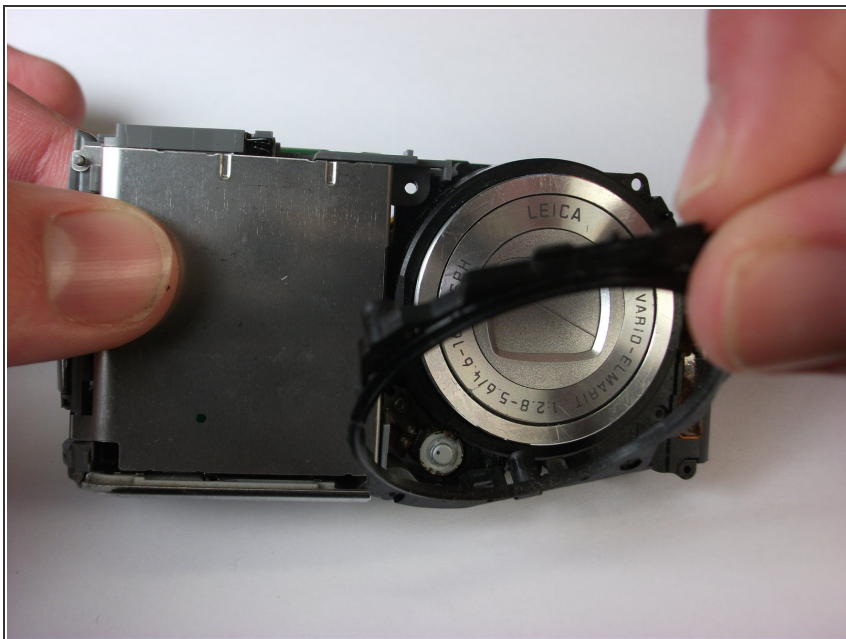
- Carefully remove the front casing after verifying that the thin plastic around the lens is not still attached.

Step 13 — Lens Assembly



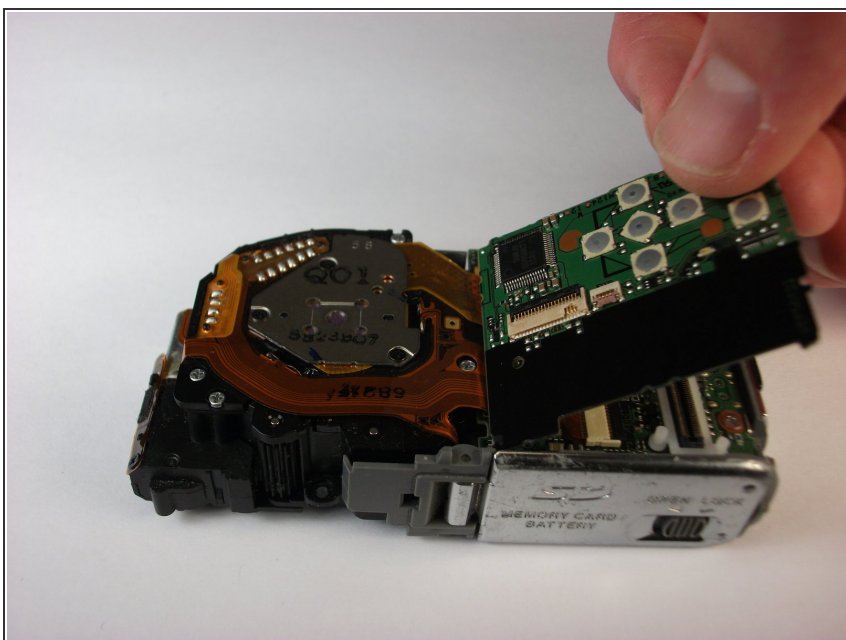
- Remove the three black 5mm screws attached to the lens frame.

Step 14



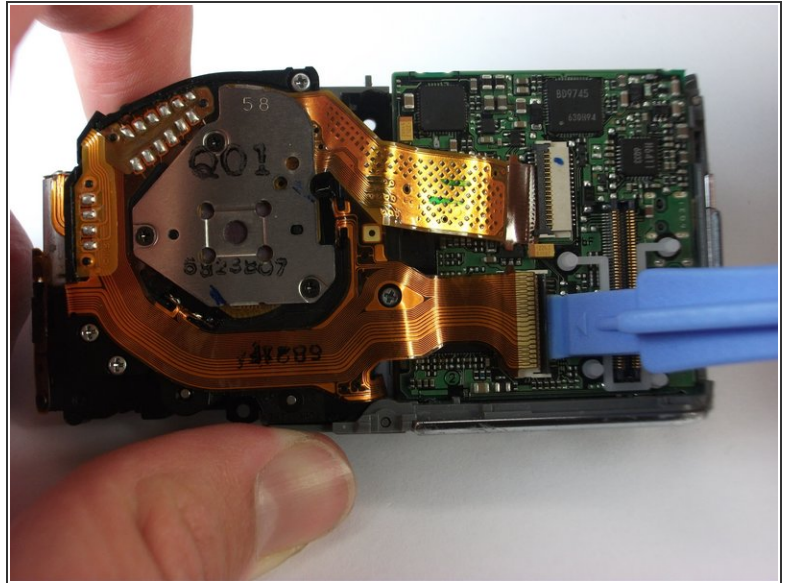
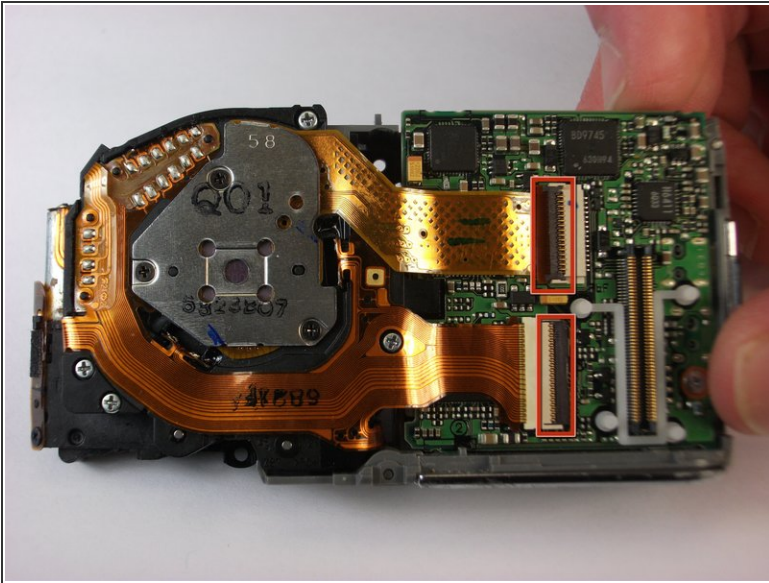
- Remove the lens frame.

Step 15



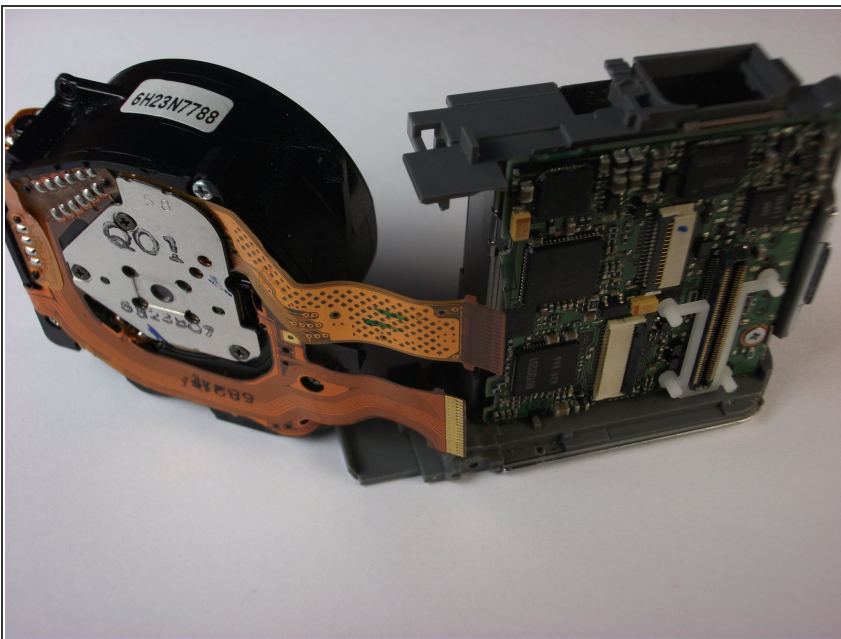
- Lift out the circuit board as shown.

Step 16



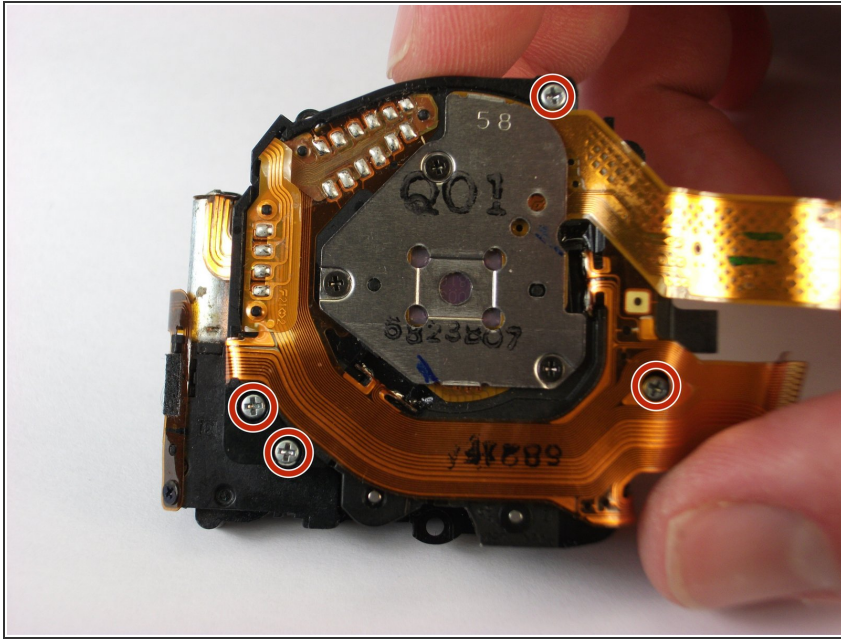
- Lift the two black latches that hold the connector ribbons in place.
- Disconnect the two ribbons.

Step 17



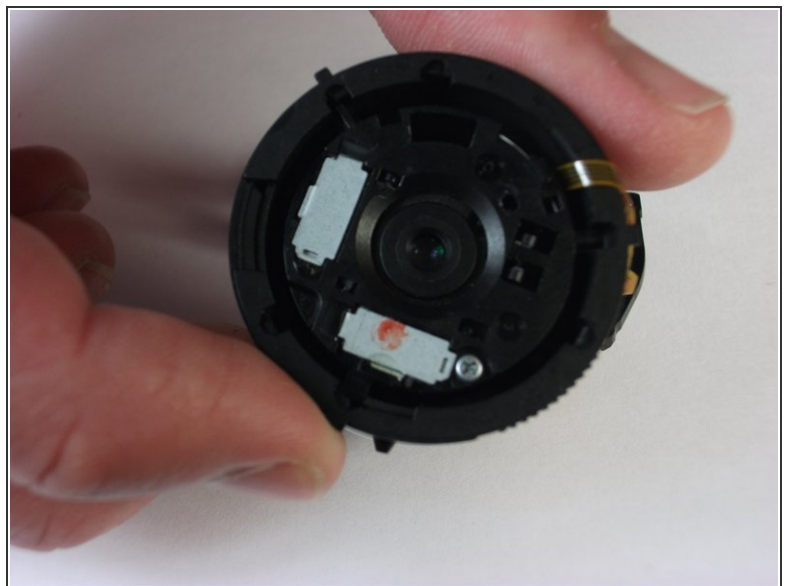
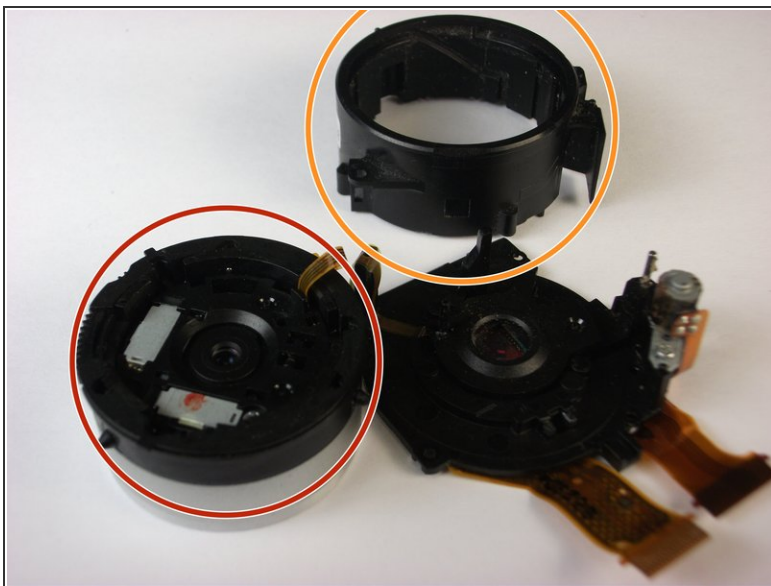
- Remove the lens assembly as shown.

Step 18 — Camera Lens



- Remove four 4 mm screws from the lens assembly using the Phillips #00 screwdriver.

Step 19



- Separate the fixed frame unit from the main lens assembly.
- Separate the direct frame unit from the main lens assembly.

Step 20



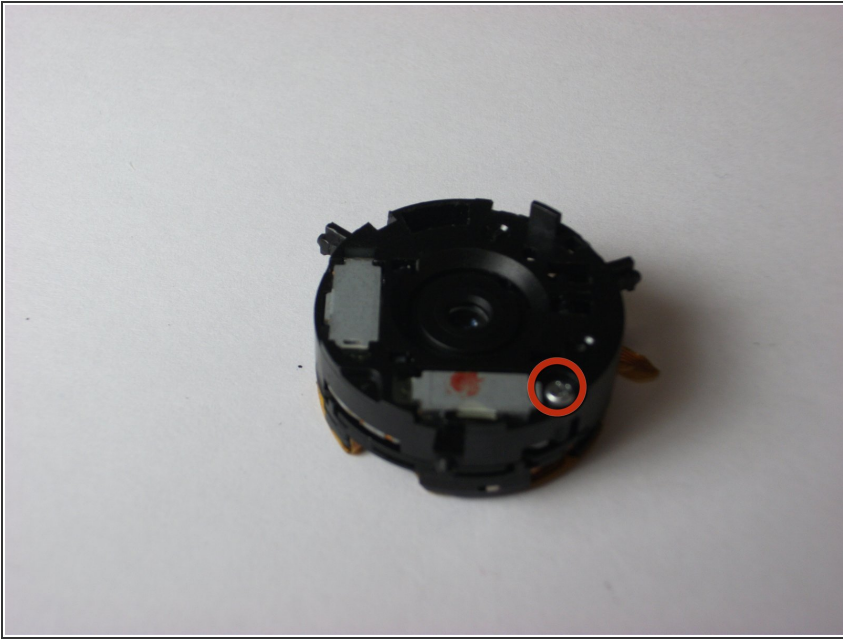
- Remove the first lens frame from the lens assembly.

Step 21



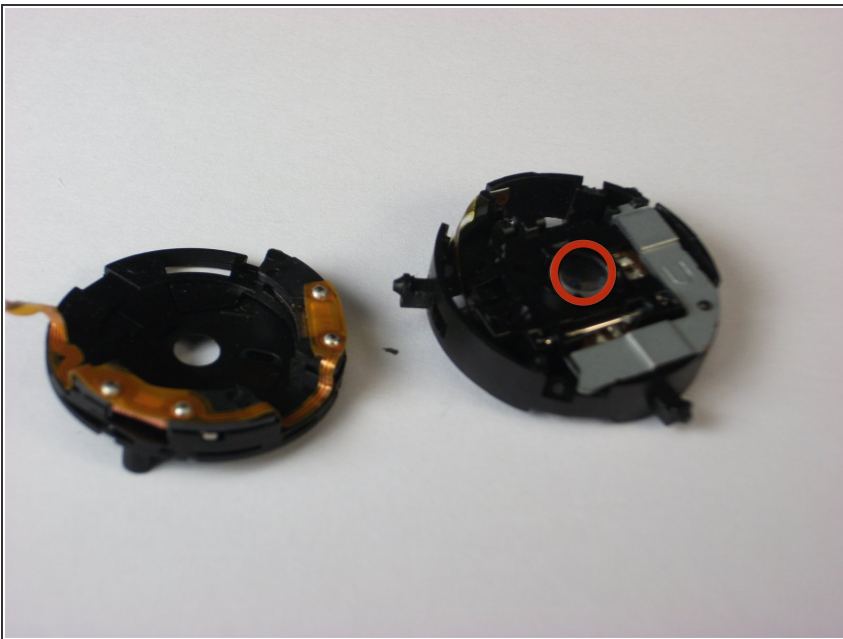
- Detach the second frame unit from the lens assembly.

Step 22



- Remove the 4mm screw from the lens housing using the Phillips #00 screwdriver.

Step 23



- Separate the lens housing.
- Replace the lens by gently prying away from the assembly.

To reassemble your device, follow these instructions in reverse order.