



MacBook Air 11" Early 2015 Left Speaker Replacement

Replace the left-hand speaker in your MacBook Air 11" Early 2015.

Written By: Sam Goldheart



INTRODUCTION

Use this guide to replace a blown out left speaker. This guide will replace the speaker on the left side of the laptop during normal use. In many of these photos the left-hand speaker will be on the right side, be sure you're replacing the right one, and that you have the correct part!



TOOLS:

- [P5 Pentalobe Screwdriver Retina MacBook Pro and Air](#) (1)
- [Spudger](#) (1)
- [T5 Torx Screwdriver](#) (1)



PARTS:

- [MacBook Air 11" \(Mid 2013 to Early 2015\) Left Speaker](#) (1)

Step 1 — Lower Case



- i Shut down and close your computer. Lay it on a soft surface top-side down.
- Remove the following ten screws:
 - Two 8 mm 5-point Pentalobe screws
 - Eight 2.5 mm 5-point Pentalobe screws
- i The special screwdriver needed to remove the 5-point Pentalobe screws can be found [here](#).

Step 2



- Wedge your fingers between the display and the lower case and pull upward to pop the lower case off the Air.

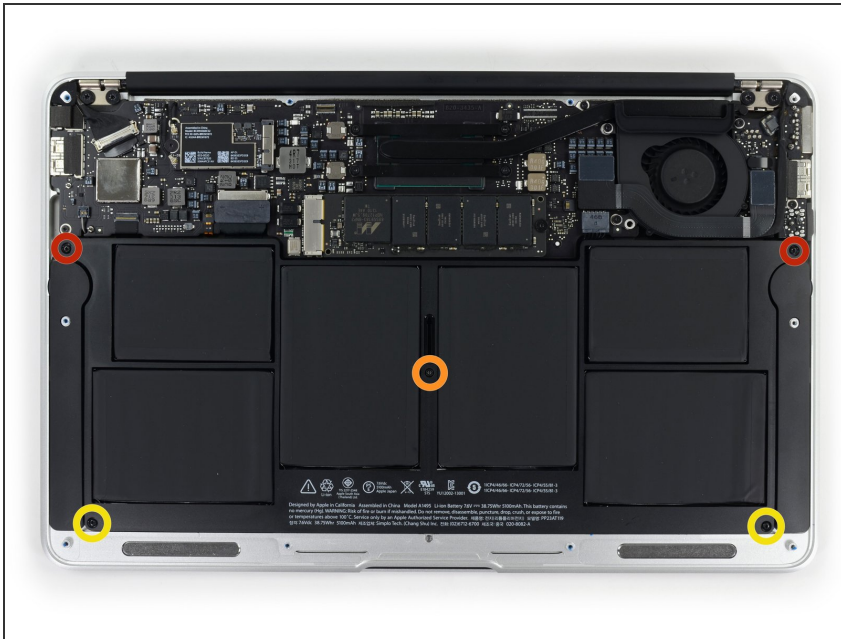
Step 3 — Battery Connector



⚠ In this step you will disconnect the battery to help avoid shorting out any components during service.

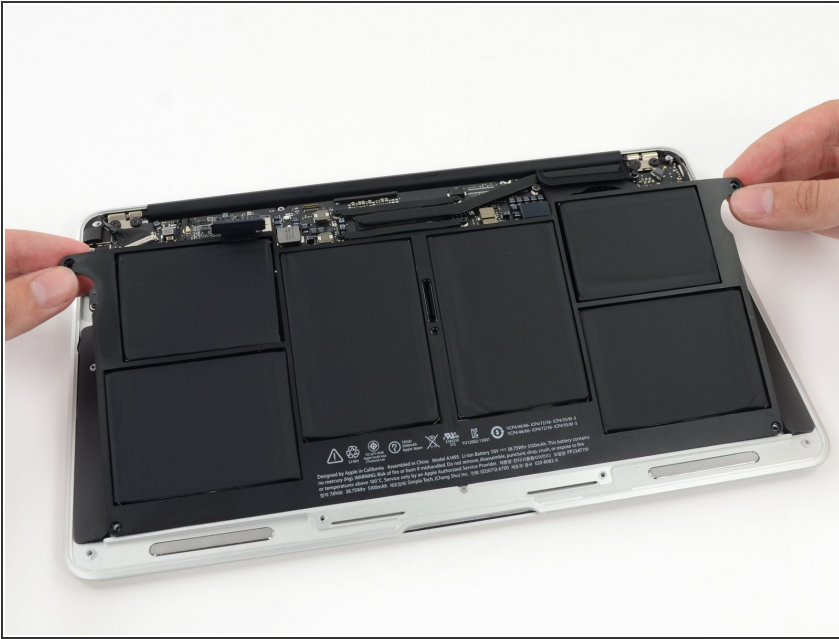
- Use the flat end of a spudger to pry both short sides of the battery connector upward to disconnect it from its socket on the logic board.
- Bend the battery cable slightly away from the logic board so the connector will not accidentally bend back and make contact with its socket.

Step 4 — Battery



- Remove the following five screws securing the battery to the upper case:
 - Two 5.2 mm T5 Torx screws
 - One 6 mm T5 Torx screw
 - Two 2.6 mm T5 Torx screws

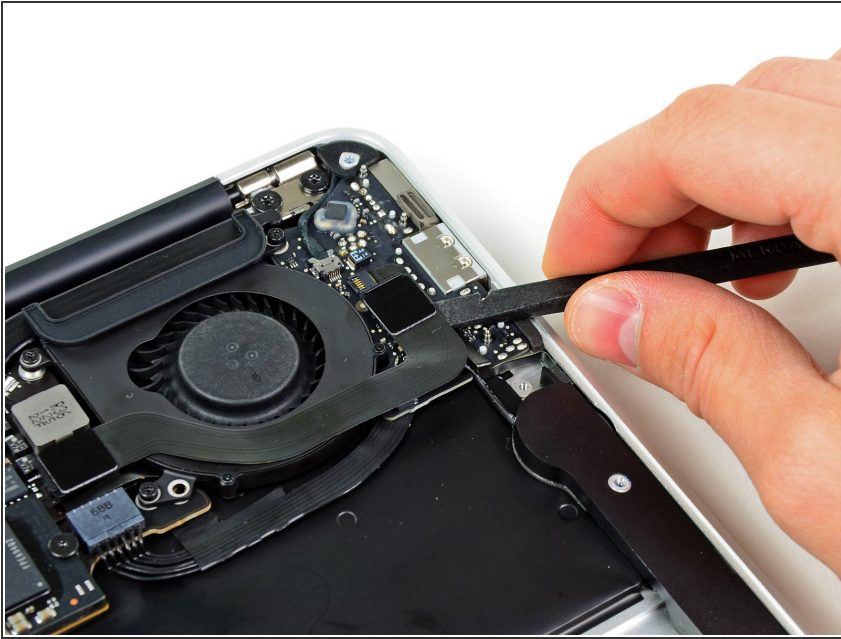
Step 5



⚠ When handling the battery, avoid squeezing or touching the six exposed lithium polymer cells.

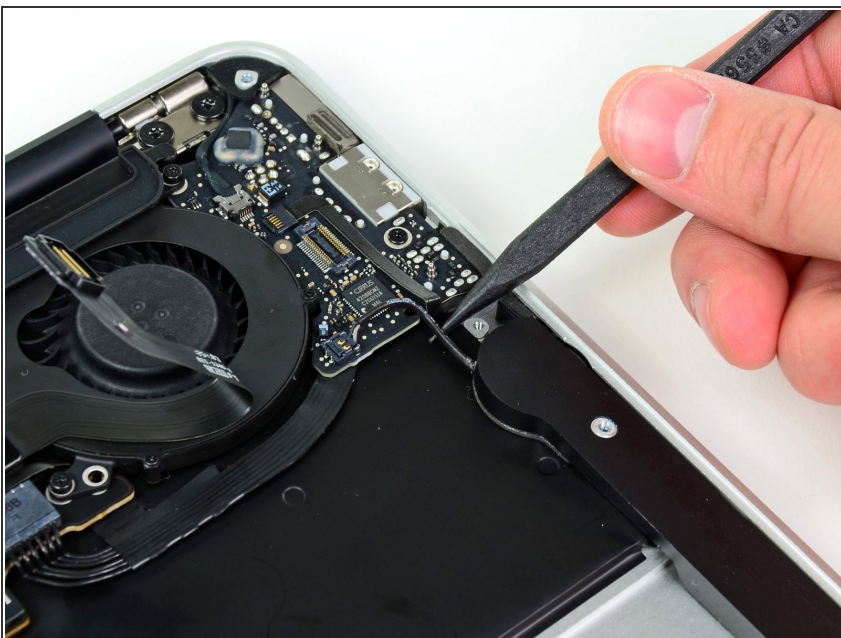
- Lift the battery from its edge nearest the logic board and remove it from the upper case.
- ☑ If you're installing a new battery, you should [calibrate](#) it after installation:
 - Charge it to 100%, and then keep charging it for at least 2 more hours. Next, unplug and use it normally to drain the battery. When you see the low battery warning, save your work, and keep your laptop on until it goes to sleep due to low battery. Wait at least 5 hours, then charge your laptop uninterrupted to 100%.
 - If you notice any unusual behavior or problems after installing your new battery, you may need to [reset your MacBook's SMC](#).

Step 6 — Left Speaker



- Use the flat end of a spudger to pry the I/O board cable connector up off its socket on the I/O board.
- Bend the cable away from the I/O board.

Step 7



- Use the tip of a spudger to de-route the left speaker cable from the notch cut into the edge of the I/O board.

Step 8



- Use the flat end of a spudger to pry the left speaker connector up and out of its socket on the I/O board.
- ⓘ Make sure to pry upward from beneath the wires.

Step 9



- Use the flat end of a spudger to pry the left speaker off the adhesive securing it to the upper case.

⚠ Only pry up on the speaker from the areas of bare aluminum on the upper case. Prying up from the keyboard area may damage the keyboard and the speaker itself.

Step 10



- Remove the left speaker from the upper case.

To reassemble your device, follow these instructions in reverse order.