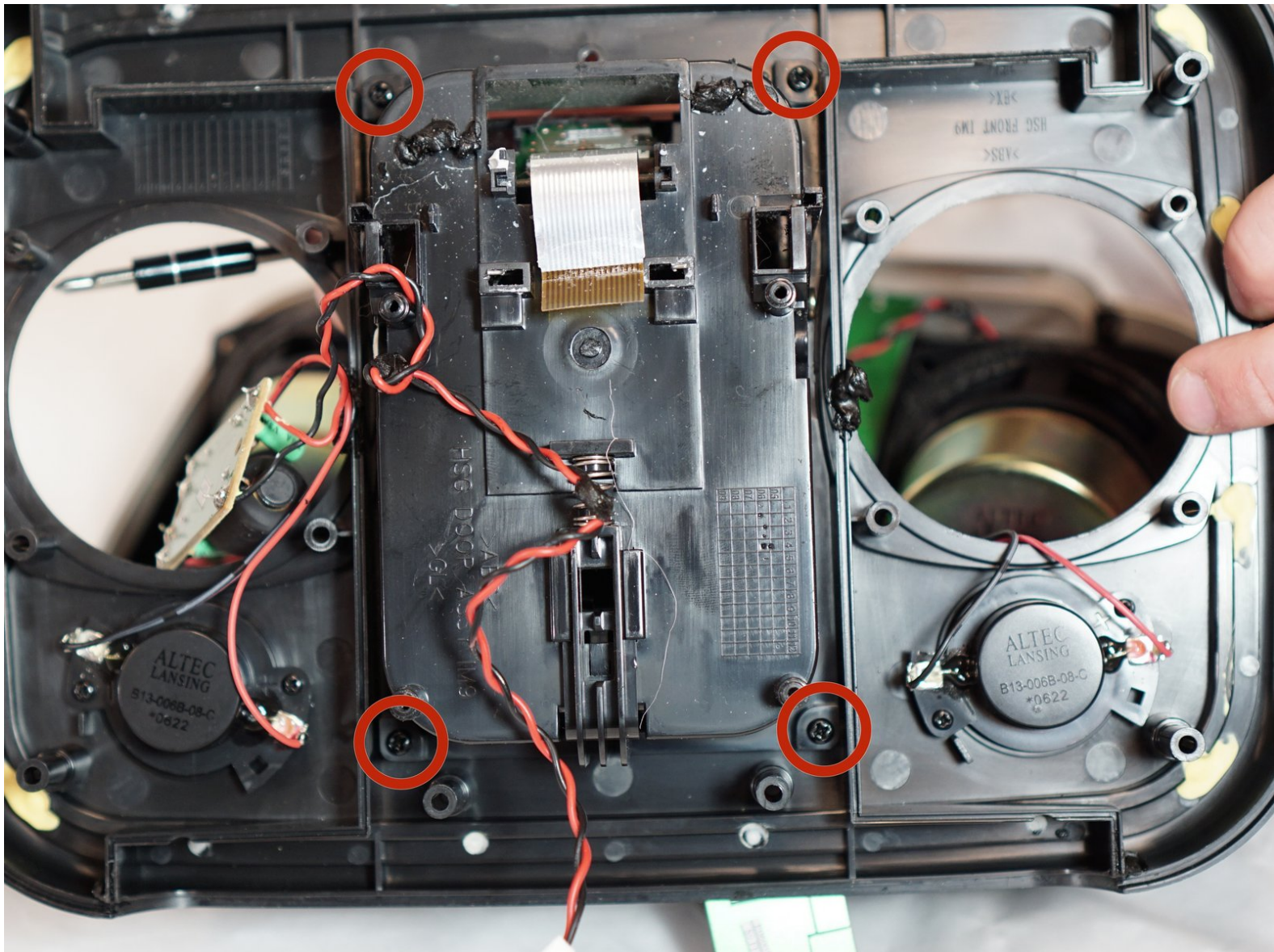




Altec Lansing inMotion iM9 iPod Dock Replacement

Altec Lansing inMotion iM9 iPod dock replacement guide for if your iPod won't connect.

Written By: Shaun Steele



INTRODUCTION

The iPod Dock is the part of the speaker that the iPod connects to. Replacement of the iPod Dock requires removal of the batteries, the volume and power buttons, and the motherboard. Soldering skills are required; take a look at this [soldering guide](#) for extra help.



TOOLS:

- [Phillips #1 Screwdriver](#) (1)
- [Soldering Iron](#) (1)
- [Spudger](#) (1)
- [Metal Spudger](#) (1)



PARTS:

- [Desoldering Braid](#) (1)

Step 1 — Battery



- Gently push down on the two tabs at the top of the battery door.
- While holding them down, slowly pull the door towards you.

Step 2



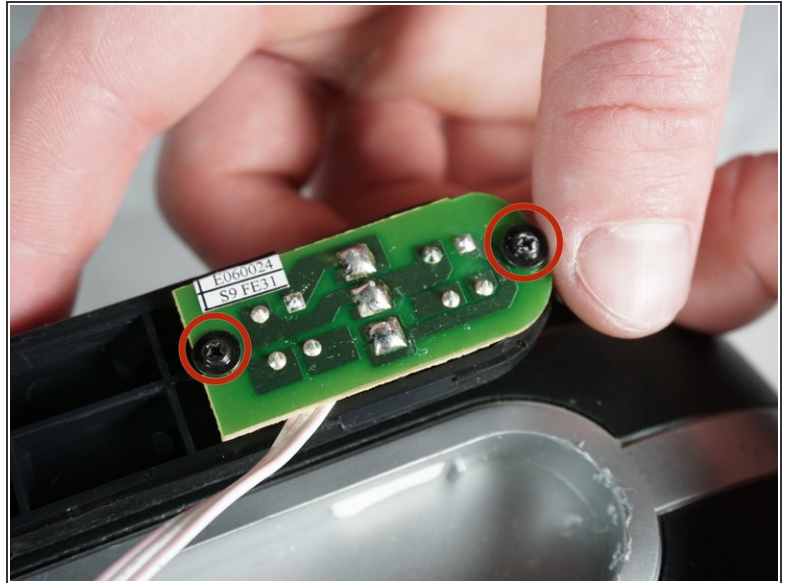
- Once the door is open, use your hand to pull out the four batteries.

Step 3 — Volume and Power Buttons



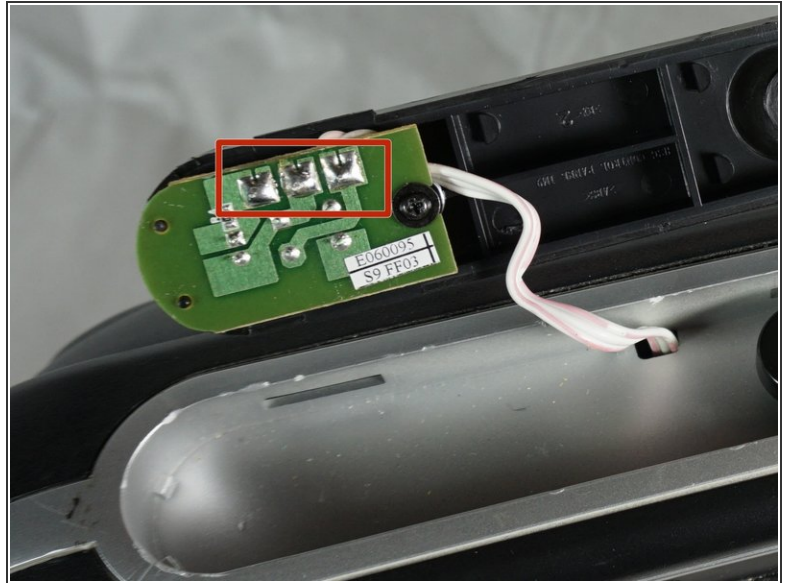
- Pry off the control panel on top of the speaker using the metal spudger. You may need to use a lot of force.
- ⓘ Start in the middle and work your way around the perimeter.


Step 4



- Using a Phillips #1 screwdriver, remove the two 7mm screws that hold the volume button circuit board to the control panel.
- Also remove the single 7mm screw from the power button circuit board on the opposite side.
- ⓘ There will be a little plastic piece under the eject button that you can just remove and set aside.

Step 5



- Desolder the three solder joints connecting the wires to the volume button circuit board.
 - Do the same to the power button circuit board on the other side (the board with only one screw).
 - Pull out the wires using a lot of force.
-  If you are not familiar or comfortable with soldering, use this [guide](#)

Step 6 — Case Opening



- Gently pry open the silver plastic lining of the iPod dock using the plastic spudger.
- It is best to start from the top or bottom, then work your way around if it has not popped out yet.
- Remove the silver lining.

Step 7



- Pry open the metal mesh by working the plastic spudger around the inside of the mesh.
- Once loose, lift up the metal mesh.

Step 8



- Remove the fourteen 30mm screws with Phillips #1 Screwdriver.
- Remove the 7mm screw with the Phillips #1 Screwdriver.

Step 9



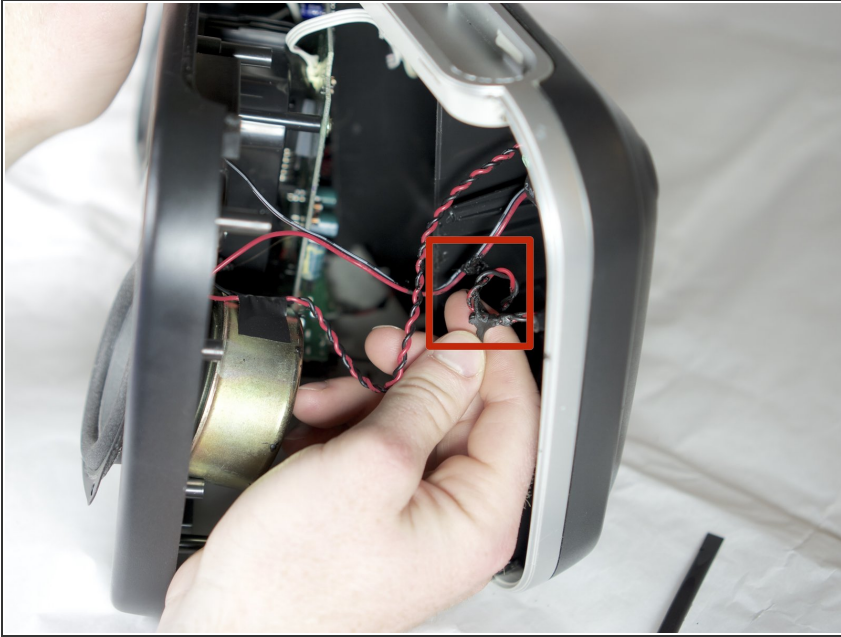
- Carefully separate the front and back case plates at a corner of the speaker.
- ⚠ Lots of cables are still connected, so be very gentle when separating case plates.

Step 10



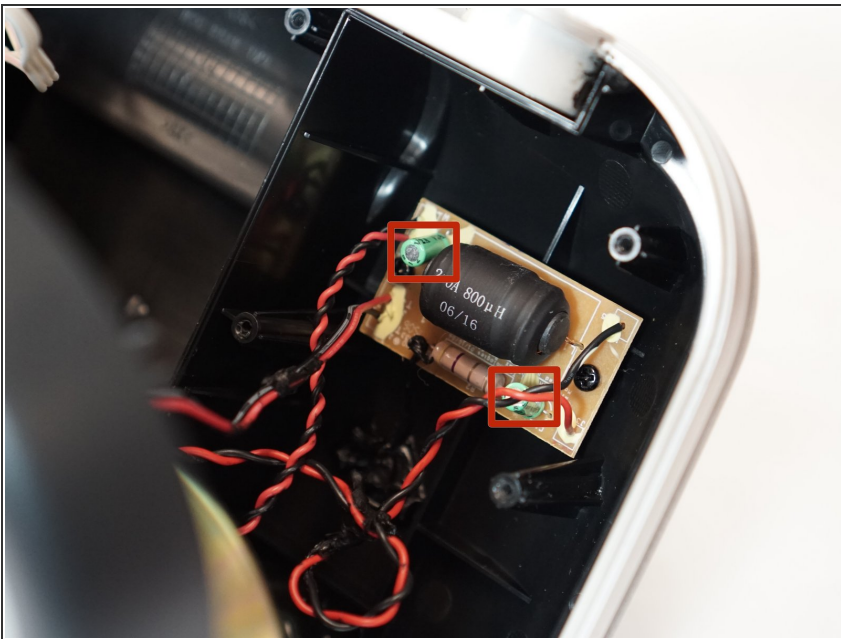
- Guide the white button cables through the hole on the top of speaker case.

Step 11



- Use your fingers to peel the glue off of the red and black cables.

Step 12



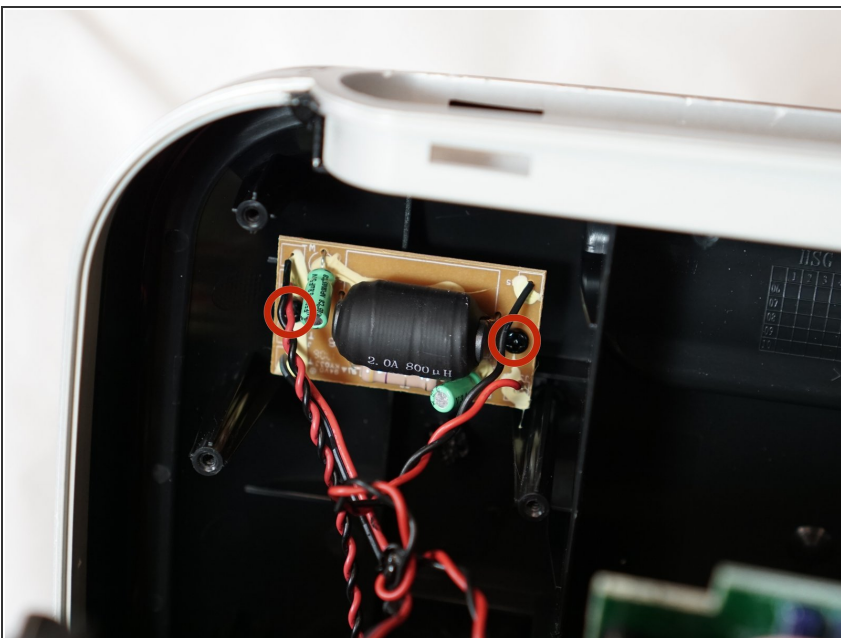
- ⚠ Careful not to touch the green capacitors or you might shock yourself.

Step 13 — Motherboard



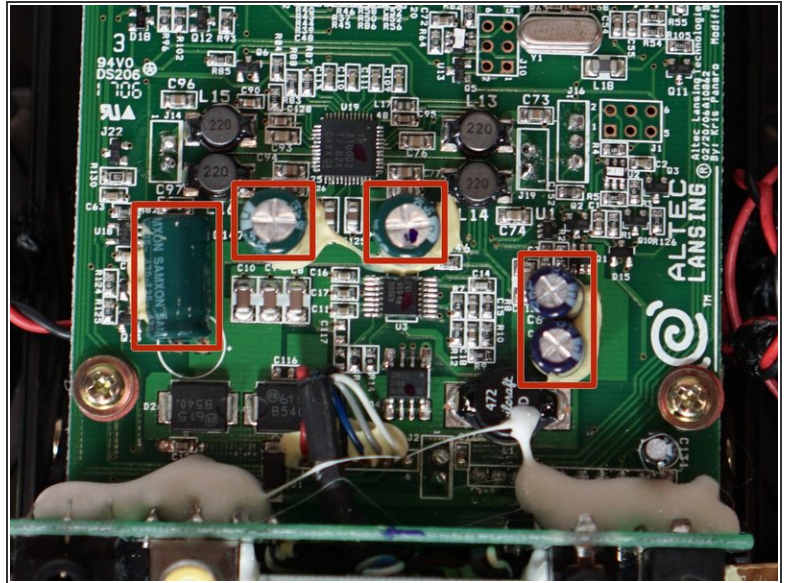
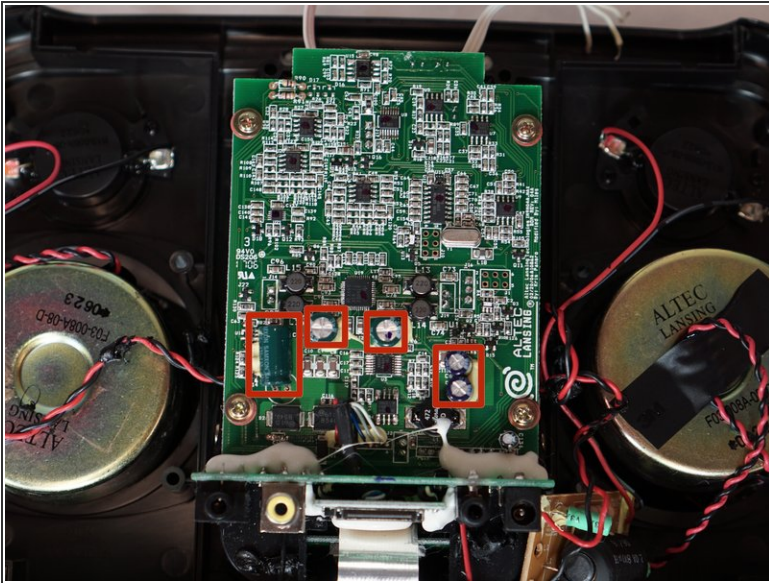
- Using a Phillips #1 screwdriver, remove the two 7mm screws from the filter.

Step 14



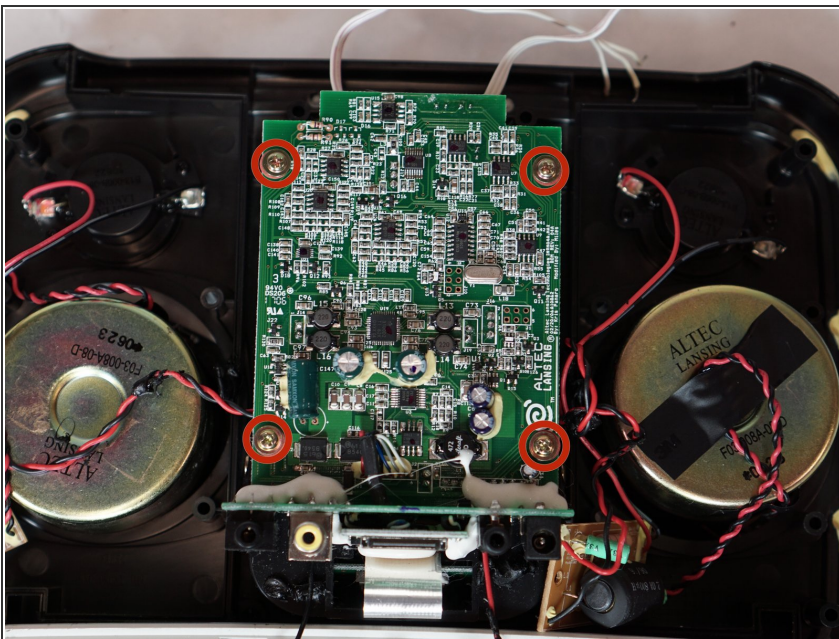
- Repeat the previous step on the other side of the speaker. There are two more 7mm screws on the filter mirroring the first.
- ⚠ Don't touch the green capacitors; you might get shocked.

Step 15



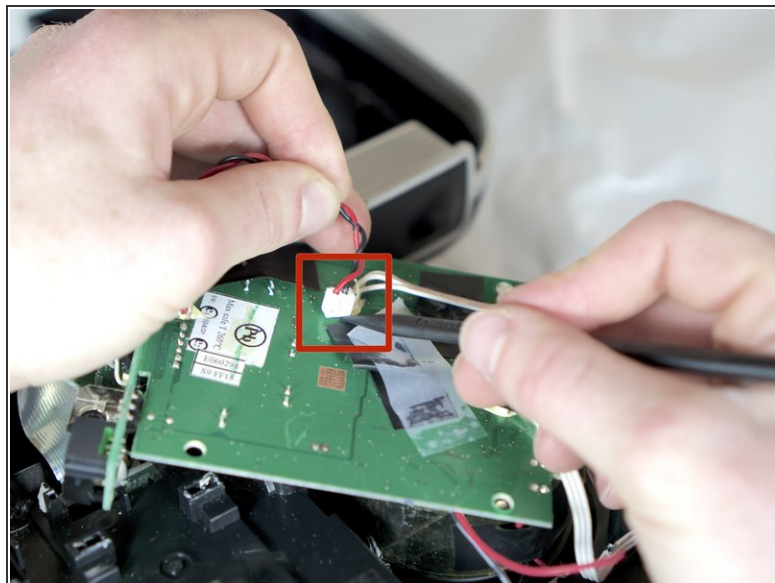
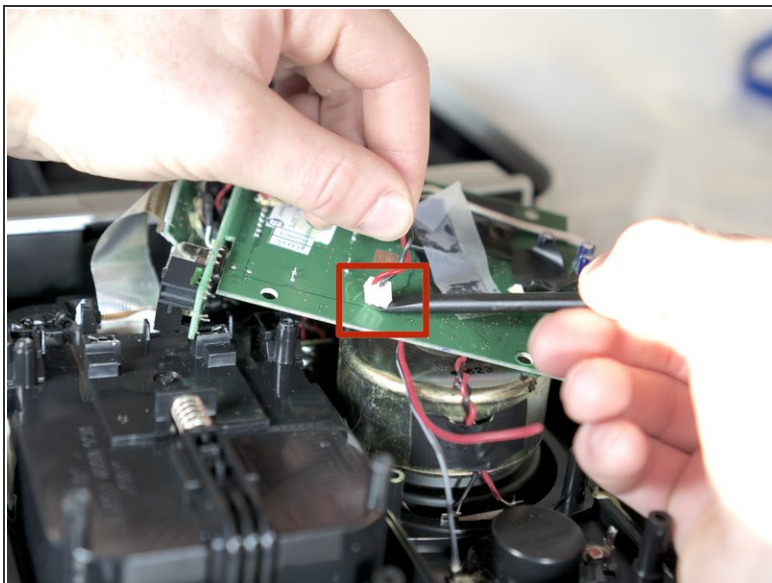
⚠ Don't touch the green capacitors. They might shock you.

Step 16



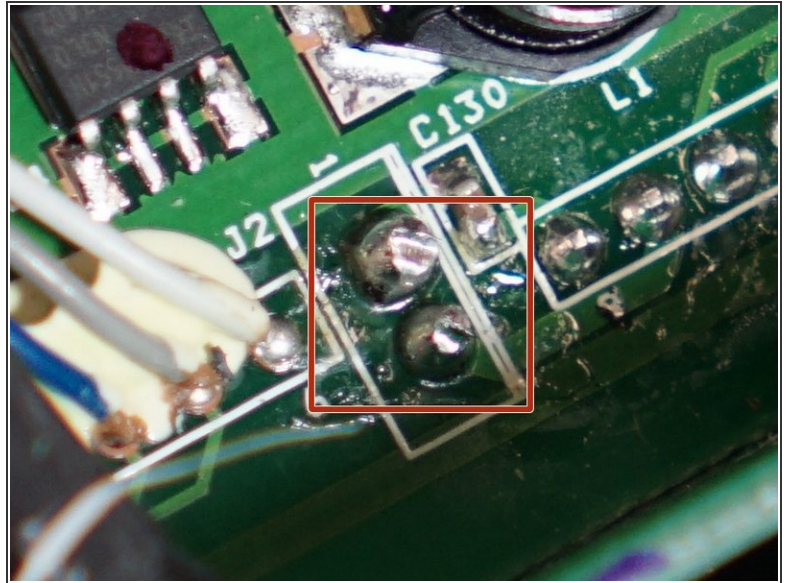
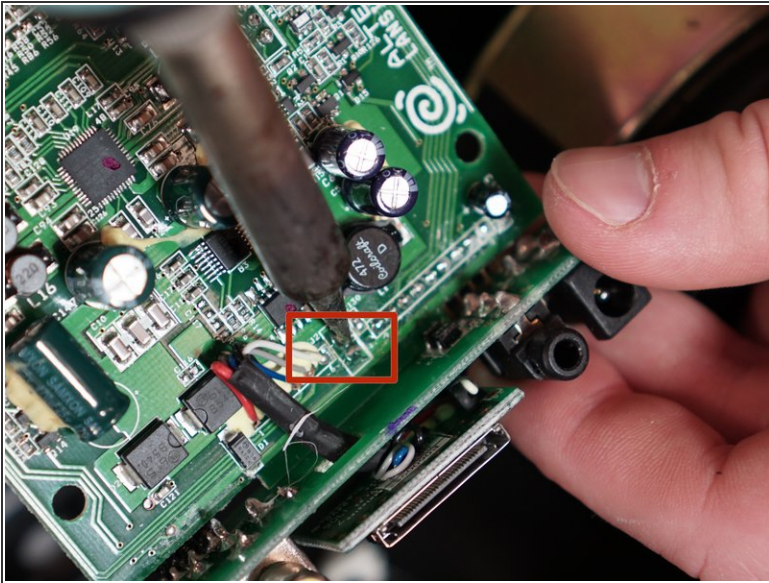
- Using the Phillips #1 screwdriver, remove the four 10mm screws from the corners of the motherboard.

Step 17



- On the back side of the motherboard, pry out the connector to the filter using the plastic spudger. You will have to use a lot of force.
- Pry out the second connect to the filter similarly.

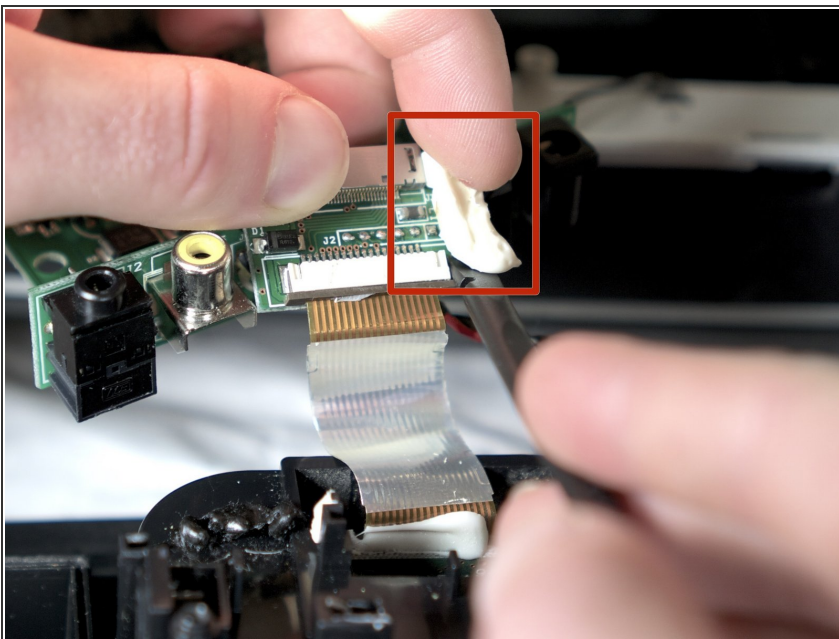
Step 18



- Desolder the two battery connections from the motherboard.

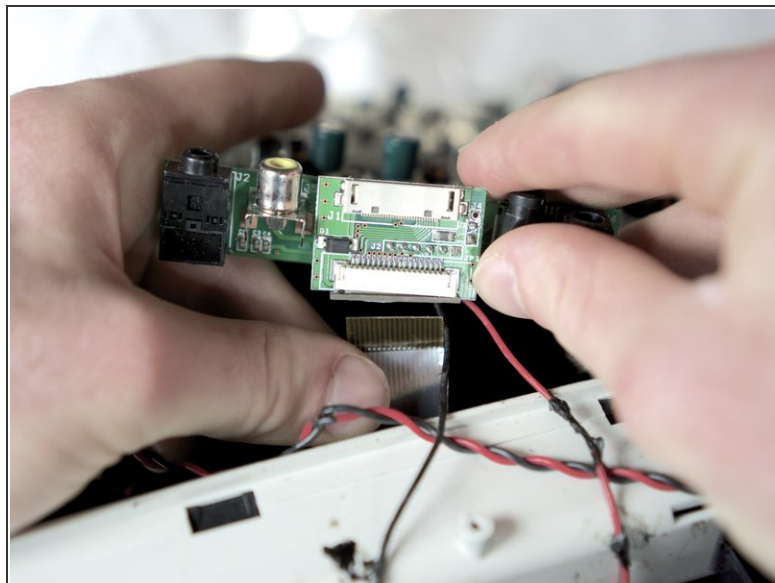
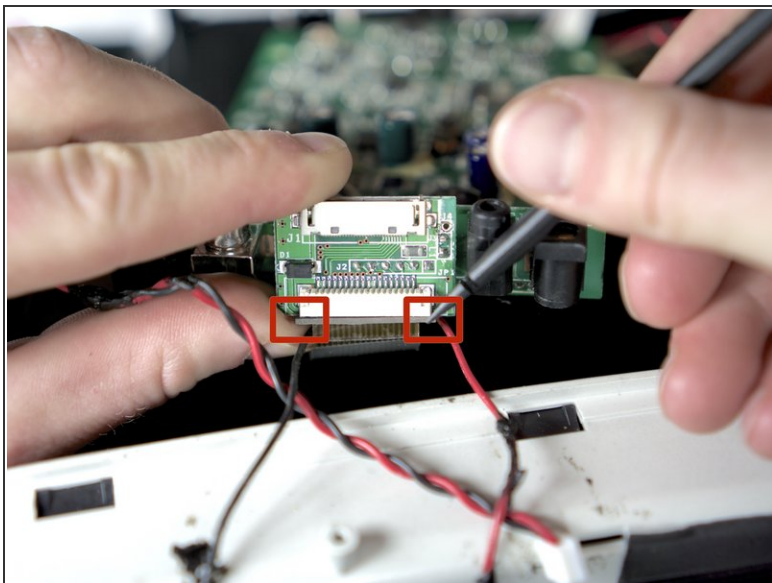
⚠ Do not touch capacitors to avoid being shocked.

Step 19



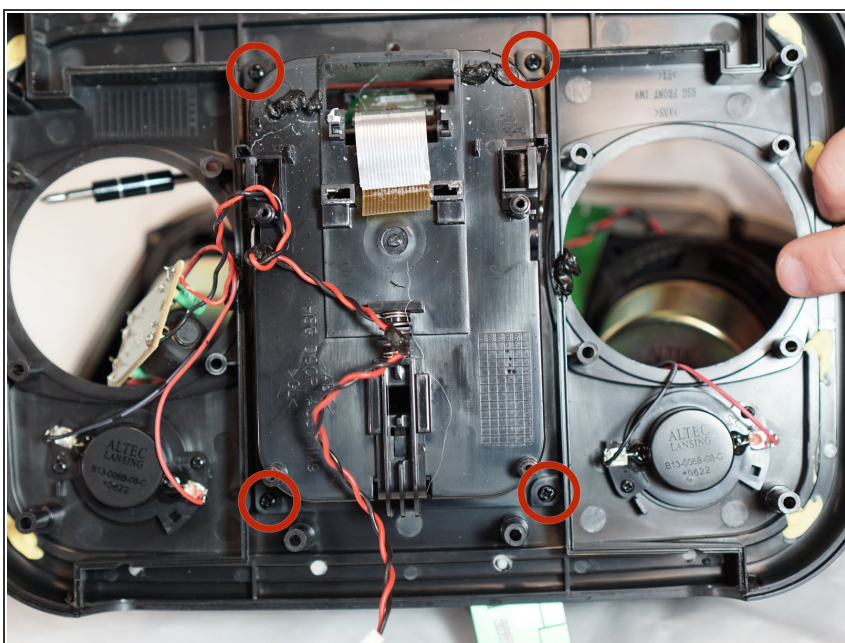
- Use the pointed end of the plastic spudger to pry the glue off of the iPod dock. You will probably have to use some force.

Step 20



- Unlock the ribbon cable dock by pressing down on the two tabs at the bottom of the dock.
- Detach the copper ribbon cable by gently pulling it down, freeing the motherboard completely.

Step 21 — iPod Dock



- To remove the iPod Dock, unscrew the four 8mm screws located on the corners of the dock casing using the Phillips #1 screwdriver.

Step 22



- Remove the iPod Dock from the speaker.

To reassemble your device, follow these instructions in reverse order.